



**RUST
BUSTER**
FRAMEWORKS

RB2017

**Jeep® YJ Wrangler
Front Body Mount Bracket**



REQUIRED TOOLS

Jack Stands or Lift
Mig Welder
Paint/Primer
Locking Pliers
Hand Grinder
Cutting Wheel or Torch
Welding Gloves
Welding Hood/Shield
Ear & Eye Protection
Sockets & Ratchet
Fire Extinguisher & Water

KIT CONTAINS

Front Body Mount Bracket

QTY

1



RB2017

Jeep® YJ Wrangler
Front Body Mount Bracket

1) **PREPARING YOUR VEHICLE**

Begin by disconnecting your battery prior to starting your installation.

Inspect your vehicle for leaking fuel lines, fuel tank and engine components. If you have fuel leaks repair all leaks prior to starting your installation. If your fuel tank is near your welding area **remove your tank prior to welding.**

Remove all combustible items above the work area such as seats, carpets, padding, etc.

Keep all flammable materials away from the vehicle work area.

2) **PREPARING YOUR WORKSTATION**

Keep a fire extinguisher and water close by in the case of fire and make sure you always have a designated "Fire Watch" to assist during the cutting or welding phases.

Abide by all apprenticed welding safety standards and practices.

Always use appropriate welding eye protection, ear protection, and work and fire safety gloves during the installation and within the work area.



WARNING!

If you are unsure on how to perform the installation or how to operate any of the required tools listed above, it is **HIGHLY** advised that you enlist the work of a certified welder/installer.

Failure to follow proper safety precautions and instructions may result in serious injury. **The user assumes all liability when installing the product.**



RB2017

Jeep® YJ Wrangler Front Body Mount Bracket

3) PREPARING FOR YOUR INSTALL

Lift your vehicle.

Remove the tires and wheels and set them out of the way.

Support your axles using jack stands for the driver and passenger sides.

Drop and remove the gas tank and all cords and tubes associated with it, and plug/cover the remaining tubes to prevent fume leakage. Place it safely outside of your workstation as it poses as a fire hazard during installation.

Remove the front bumper and frame cover.

Using a 16mm socket, remove the body mount bolt from the body mount bracket on the front cross member.

Once the body mount bolt is removed you can take out the rubber body mount bushings.

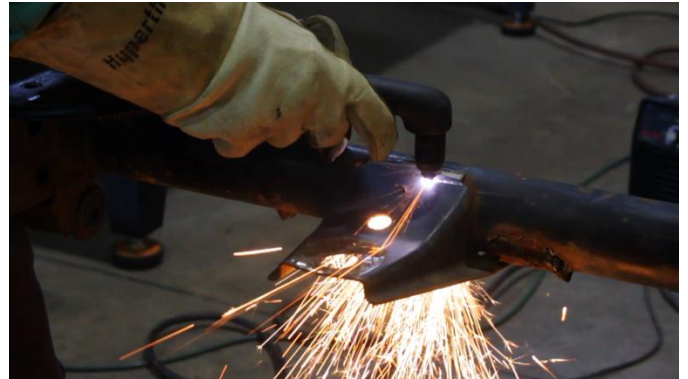
Depending on how you intend to cut, clean the cut zones free of rust and down to bare metal.

4) CUT

We recommend marking the orientation of the body mount bracket to help position the new mount bracket easier.



Begin cutting away the body mount bracket as close to the front cross member as possible.



5) TEST FIT PART

Hold the new bracket up to the front cross member in line with orientation lines previously marked.



NOTE: If other frame repair components have been installed previously, additional modifications to the frame may be required.



RB2017

Jeep® YJ Wrangler Front Body Mount Bracket

6) WELDING PREP

Once the part has been fitted, prepare your weld zones by clearing away any rust or debris, revealing bare metal.



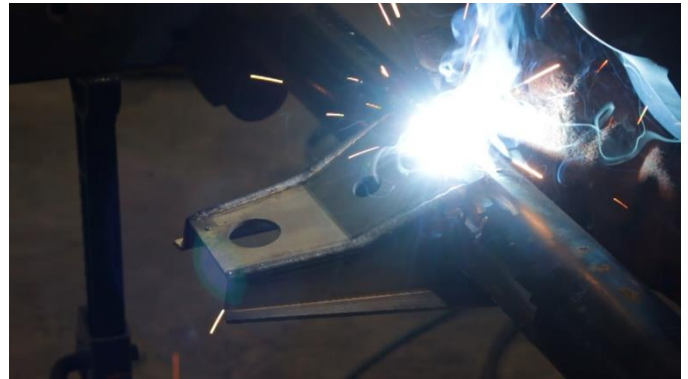
(OPTIONAL): Coat the part with a weld-able primer or other rust inhibitor to help prevent or reduce the risk of rust formation.



Tack weld bracket into place and test fit body bushing and bolt to check fitment.

7) WELD

Remove any remaining potential fire hazards on both the vehicle and surrounding area. Following proper welding procedures begin welding the part onto the frame rails.



100% weld around all edges.

8) PAINT AND PROTECT

If you chose not to protect your part in (Step 6), coat the part and work area with a primer or other rust inhibitor to help prevent or reduce the risk of rust formation.



9) REASSEMBLE VEHICLE

Begin reassembling your vehicle by starting with the body mount bushings and bolt with a 16mm socket.

Reinstall your front bumper and frame cover.

Reinstall your gas tank, cords, and tubes.

Reinstall your tires and wheels.

Reconnect your battery.