



Part # 18205.24

## Frame Drop Bracket, Front Control Arm, 07-15 JK

### KIT CONTENTS

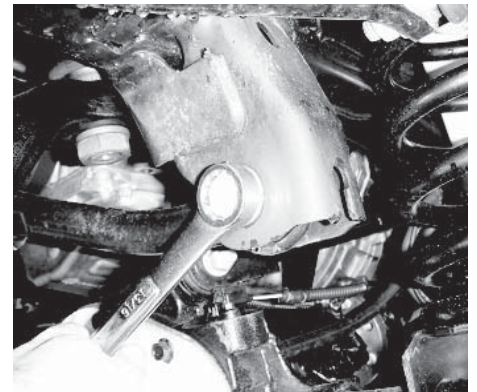
1. Frame Drop Bracket (1)
2. 9/16" x 3 1/2" Hex Bolt (1)
3. 9/16" Flat Washers (2)
4. 9/16" Nyloc Nut (1)
5. 1/2" x 1" Button Head (1)
6. 1/2" Lock Nut (1)



PLEASE READ AND UNDERSTAND ALL INSTRUCTIONS BEFORE YOU BEGIN.

Caution: Always park vehicle on level ground when working under vehicle. Always use jack stands when removing tires from vehicle. Eye protection is required when working under vehicle. Penetrating oil may be necessary to remove track bar.

Step 1. Raise the vehicle and support with jack stands. Remove both front wheels. Remove the track bar from the driver side of the vehicle. A penetrant spray may be needed to loosen the bolts. Use caution when removing the bolt from the track bar as it may have some tension on it. Remove the lower two bolts that hold the steering gear box to the frame. Do not discard hardware it will be reused.

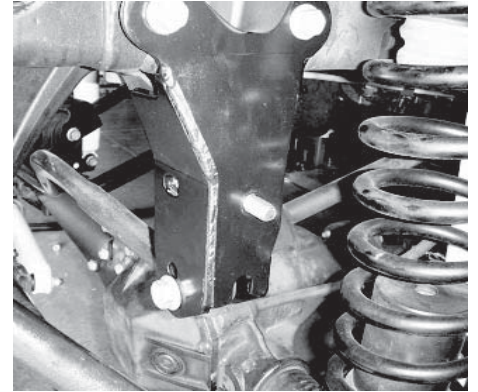




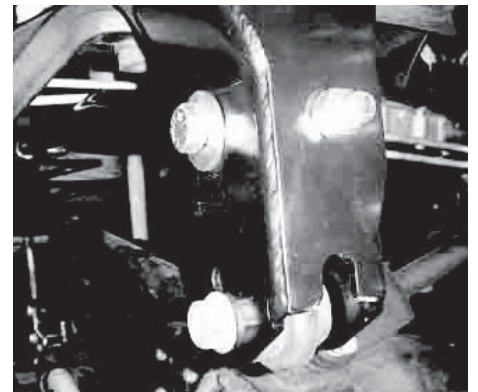
Part # 18205.24

## Frame Drop Bracket, Front Control Arm, 07-15 JK

Step 2. Attach the new frame brace bracket onto the drive side of the frame using the two bolts removed from the lower section of the steering gear box. Do not tighten at this time. Place the supplied button head bolt in the hole located in the center of the bracket. The button head should be on the inside of the brackets with the threads extending outward towards the coil spring. Use the supplied lock nut to mate the brackets together.



Step 3. Reinstall the track bar using the factory hardware in one of the two lower mounting holes which is suitable for the height of lift. Install the supplied 9/16 bolt with a washer on each side in the original track bar hole using the supplied spacer in the original trackbar mount location.



Step 4. Torque the bolts to the following specifications:

- Frame Brace Bar End Bolts- 85 ft lbs.
- Steering Bear Box Bolts- 65 ft lbs.
- Track Bar Bolt- 125 ft lbs.

Note: The extra threads sticking out on the button head bolt may have to be trimmed for clearance of the sway bar ends.

