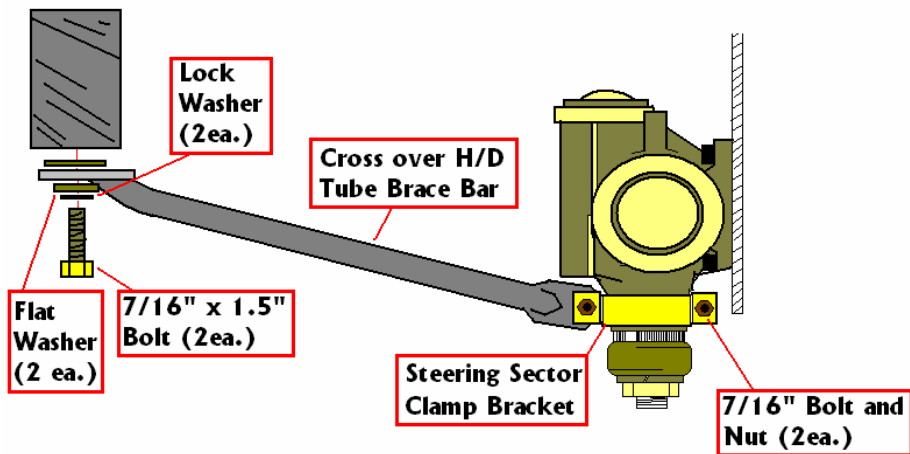




MS-9037 (18021.02) H/D CJ Steering Box Cross Brace
1976-1986 CJ5 , CJ7, and CJ8

<u>Parts List:</u>	(1) Steering Brace Tube	(2) Steering Sector Clamp Bracket
	(4) 7/16" x 1.5" Bolts	(2) 7/16" Nylock Nut
	(2) 7/16" Flat Washer	(2) 7/16" Lock Washer



Installation Instructions:

- (1) Remove rear bolt in the front spring hanger on passenger side frame rail.
- (2) Install cross tube flat mounting plate in location of bolt removed in step 1. Install bolt through rear shackle hanger location and into bolt located 2.5" behind it. Do Not Tighten At This Time.
- (3) Install Sector Clamp Brackets to steering box as shown above.
- (4) Locate Cross Over H/D Tube Brace Bar between the two Sector Clamps as seen above. Secure both sides using the 7/16" bolt and Nylock Nut.
- (5) Tighten frame bolts to 60ft./lbs
- (6) Tighten Sector Clamp bolts to 60ft./lbs

Warning : Before Driving make sure steering can travel in full arc left to right without rubbing or hitting components. For added strength this part can also be paired with Rugged Ridge part number 18003.10 (H/D Steering Box Mount).

