

## Jeep® JK Wrangler Plastic Rocker Armor Installation Instructions

### Contents:

- (1) Right Side Rocker Cover
- (1) Left Side Rocker Cover
- Allen Head Bolt: (8) 2-door, (16) 4-door
- Flat Washer: (8) 2-door, (16) 4-door
- Hex Head lock Nut: (8) 2-door, (16) 4-door
- Plastic Spacer: (4) 2-door and 4-door
- Rear Panel Clip: (2) 2-door and 4-door



**Note: The Wrangler body armor has been designed to fit tightly to the contours of the vehicle. Instructions must be followed to insure the correct placement and adhesion of this part. If surface is not cleaned and prepped as stated in the instructions proper fitment will not take place. Do Not install if outside temperature is below 65F. or over 100F. Allow part to sit overnight before driving.**

- Step1:** Both sides of the vehicles lower rocker panel should be cleaned to the door line with soap and water. Dry surface with a clean cloth. When dry, rub area down with alcohol wipes or a cloth moistened with denatured alcohol. This will remove any remaining dirt and soap residue that may contaminate the adhesive tape used to secure the plastic armor. Allow to dry (pic.1).
- Step2:** Remove the (2) 10mm bolts used to secure the front fender to the lower rocker panel. (pic.2).
- Step3:** Place rocker armor into position. DO NOT remove tape at this time. Visually inspect the fit of the part to confirm that the mounting holes are aligned. The front ,middle, and rear Allen head bolts can be installed to confirm fitment. DO NOT tighten at this time. Enlarge the holes of the armor if needed. (pic.3).
- Step4:** With the rocker armor removed from the vehicle peel back protective covers at 45 deg. angles (pic.4). Pull back only 2" of the protective cover from both ends of the plastic rocker armor. DO NOT remove all the tape.
- Step5:** Place Rocker armor back onto vehicle being careful not to make contact with the upper door seal until it has been positioned correctly. **A second person may be needed.** When the top of armor matches the panel break affix sections of exposed tape to vehicle making sure that it is flat. Before applying pressure to the exposed tape section. Double check all hole alignment.
- Step6:** Using the supplied Allen head bolts, washers and nuts attach the lower section of the plastic armor to the vehicle except for the two center mounting holes. The Allen head bolts can replace the factory bolts removed in step 2 for a clean installation. DO NOT TIGHTEN BOLTS. (pic.5)
- Step7:** 2 plastic spacers are to be used behind the two center mounting holes of each side of the Rocker Armor. The spacers help to maintain an even pressure along rocker panel for a smooth appearance of the Rocker Side Armor.
- Step8:** Insert spacer between Plastic Armor and vehicle body as shown (pic.6). Insert Allen head bolts with flat washer through front of Rocker Armor and secure with flat washer and hex nut. Secure but do not over tighten (pic.7)

pic.7



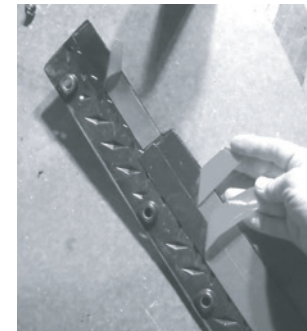
pic.8



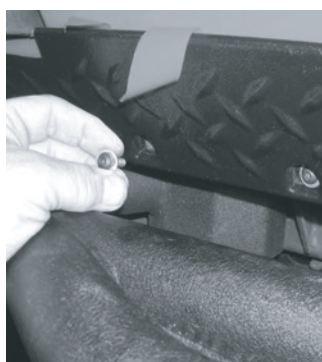
pic.3



pic.4



pic.5



pic.6



## Jeep® JK Wrangler Plastic Rocker Armor Installation Instructions

**Step9:** With Rocker armor in place, peel protective cover from back side of tape working from the outer edges inward (pic.8). Make sure that all tape covering is pulled back at the same time. This will insure that all the protective covering is removed during the installation. **The help of a second person is recommended for this step.**

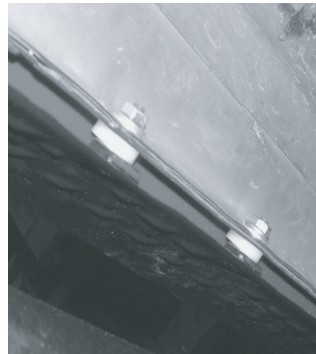
**NOTE: If there are any bulges in the rocker armor start over with step 6.**

**Step10:** Apply pressure to the rocker armor to insure a strong bond. Tighten Allen head bolts snug. DO NOT over tighten.

**Step11:** Attach rear clips to lower rocker panel as shown (pic.9). This clips maintains pressure on the rear of cover to insure a strong bond.

**NOTE: Allow part to sit overnight before driving,**

pic.7



pic.8



pic.9

