



# Installation Instructions

## Roll Bar Top

### 76-91 CJ7 & Wrangler

### P/N: 13554.XX

**If your Jeep did not come with a soft top or windshield channel is missing, you will need to purchase a windshield channel from your Rugged Ridge distributor P/N 13308.01**

#### IMPORTANT NOTICE:

This Roll Bar Top installation requires drilling. Carefully read the instructions before attempting to install this product. Rugged Ridge is in no way responsible for any damage to the vehicle or personal injury that may occur during the installation or use of this product.

#### INCLUDED COMPONENTS

- 1 – Roll Bar Top
- 2 – “J” Hooks
- 2 – Curved Bars
- 1 – Straight Bar
- 2 – Plastic Feet
- 2 – Plastic Brackets
- 4 – Large Sheet Metal Screws
- 2 – Sheet Metal Screws
- 2 – Large Bolts
- 2 – Small Headless Bolts

#### INSTALLATION INSTRUCTIONS

- 1) Unfold the Roll Bar Top and lay it in direct sunlight for at least 30 minutes. For best results the temperature should be over 70 degrees. If it is not you can still install the Roll Bar Top but you will need to tighten the straps after use until stretches smooth.
- 2) Position the Plastic Bracket on the center of the roll bar, mark and drill (Figure 1). Distance from the bottom center hole and bottom of the roll bar should be approximately 16” inches. **NOTE:** The larger hole on the Plastic Bracket should face the outside of the Jeep.

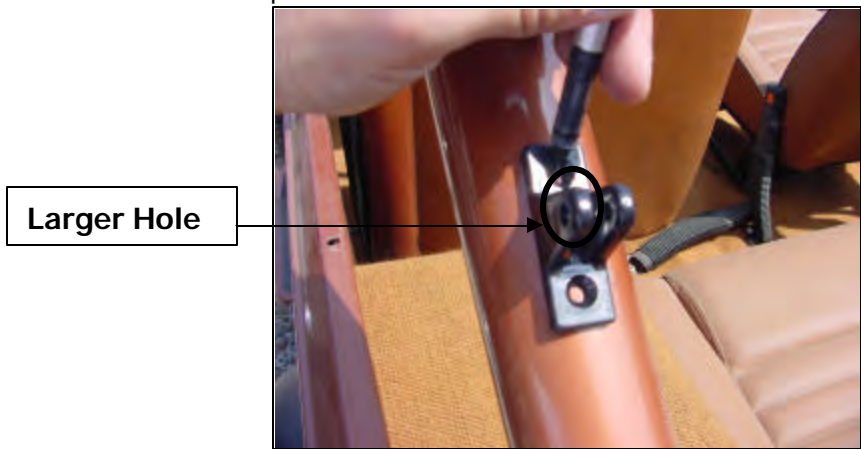


Figure 1

- 3) Repeat Step 2 for opposite side.
- 4) Attach the Straight Bar to the Curved Bars using the two Sheet Metal Screws provided (Figure 2).
- 5) Using the two Headless Screws provided attach the Plastic Feet to the Curved Bars (Figure 3).



**Figure 2**



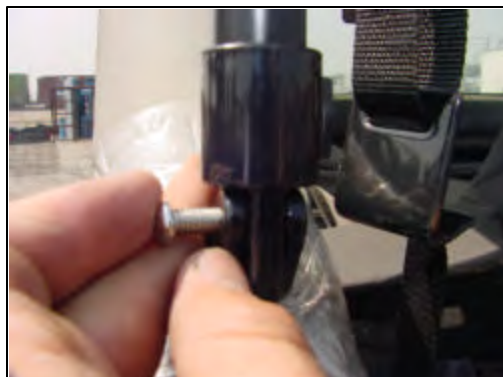
**Figure 3**

- 6) Once the Bow Assembly is complete, slide it through the Nylon Loops located on each rear corner of the Roll Bar Top (Figure 4).



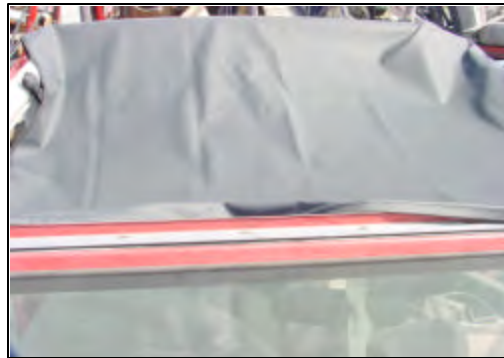
**Figure 4**

- 7) Attach the Bow Assembly to the Plastic Bracket (attached to the roll bar in Steps 2 and 3) using the two Large Bolts provided (Figure 5). **NOTE:** Make sure the Snap on the Straight Bar is facing the outside of the Jeep.



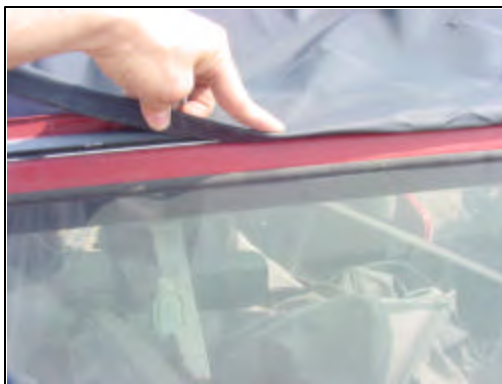
**Figure 5**

- 8) Pull the Roll Bar Top towards the front of the Jeep and lay over windshield channel (Figure 6).

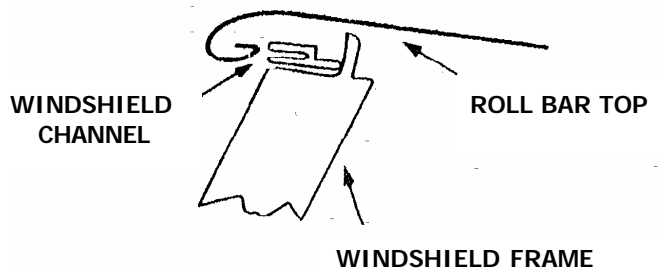


**Figure 6**

- 9) Fold the plastic strip under and insert into windshield channel (Figure 7 & 8). Center the Roll Bar Top in the channel by pulling from either side as necessary.



**Figure 7**



**Figure 8**

- 10) Loosely wrap the Velcro straps around the roll bar (Figure 9).  
11) Pull the Roll Bar Top towards the rear of the Jeep and over the Bow Assembly.  
12) Insert the two Long straps through the J-Hooks and thread through the Buckle pulling them tight (Figure 10).



**Figure 9**



**Figure 10**

13) Once the J-Hooks are attached to the rear harness, place the J-Hooks under the rear lip of the Jeep and tighten (Figure 11).



**Figure 11**

14) Once the Rear Harness is tightened, fasten the Snap located on the center of the Bow Assembly (Figure 12).



**Figure 12**

15) Now go back to the side straps and pull each of the side straps tight, working from the front of the vehicle towards the rear. May be necessary to re-tighten the straps after driving.