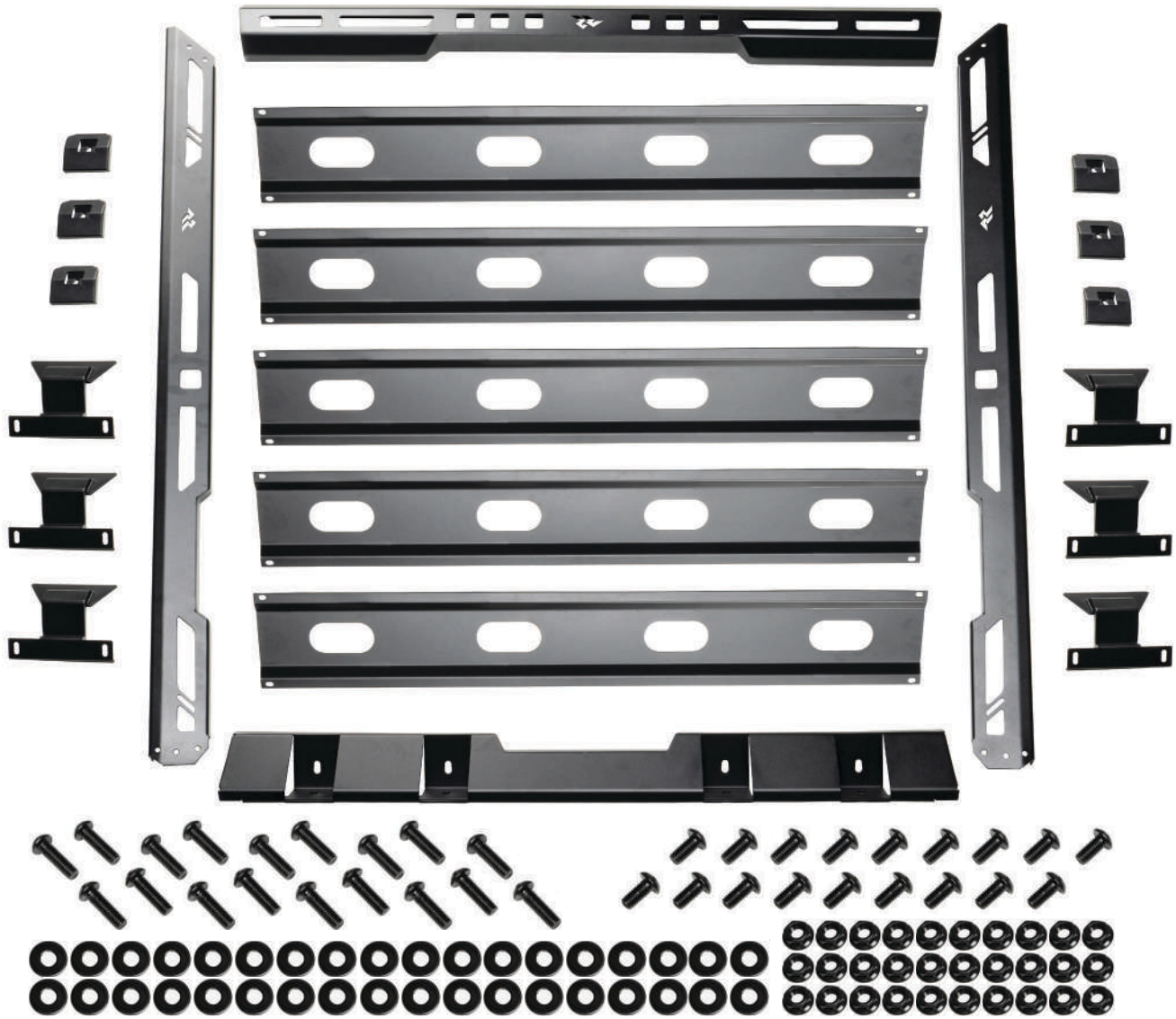


Rugged Ridge Roof Rack Basket, JL & JT



Components

1. Side Rail, Driver Side	1	7. Clamp for Roof Bracket	6
2. Side Rail, Passenger Side	1	8. M8 X 25mm Button Head Allen Bolt	18
3. Rear Panel	1	9. M8 X 16mm Button Head Allen Bolt	18
4. Front Panel	1	10. Flat Washer	36
5. Center Brace	5	11. Serrated Flange Nut	30
6. Roof Bracket	6	12. Allen Key	1

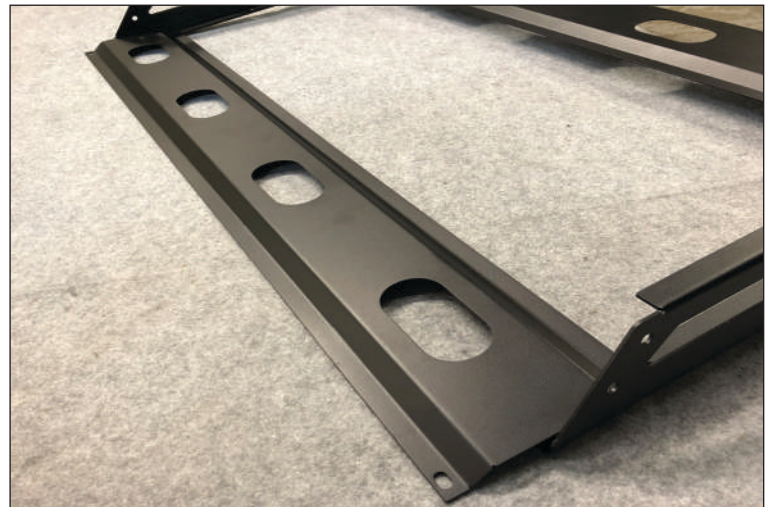
ATTN: STATE OF CALIFORNIA CONSUMERS
⚠ WARNING: Cancer and Reproductive Harm

Rugged Ridge Roof Rack Basket, JL & JT

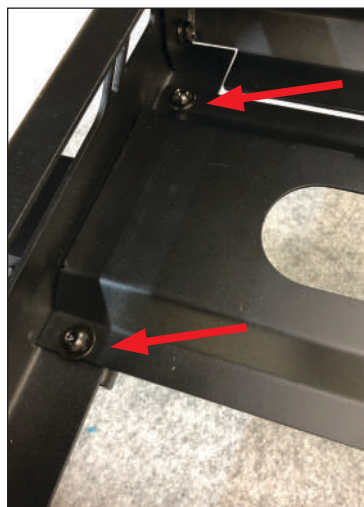
1. Start by attaching the rear section of the rack to the side rails. Use the smaller button head with washer and serrated flange nut. Snug but don't fully tighten at this time.



2. Now move to the front of the rack. Slide the center braces through the rack. There is a total of five pieces to install.



3. Slide the 5 center braces into place now attach with hardware. The first, middle and last center brace requires the longer button head bolt to pass through the center brace, rack and roof bracket. The second and fourth center brace will use the shorter button head bolt to attach. Snug all the hardware but not fully tighten at this time. With it only snug it allows you to adjust the roof bracket when placing it on the Jeep later.



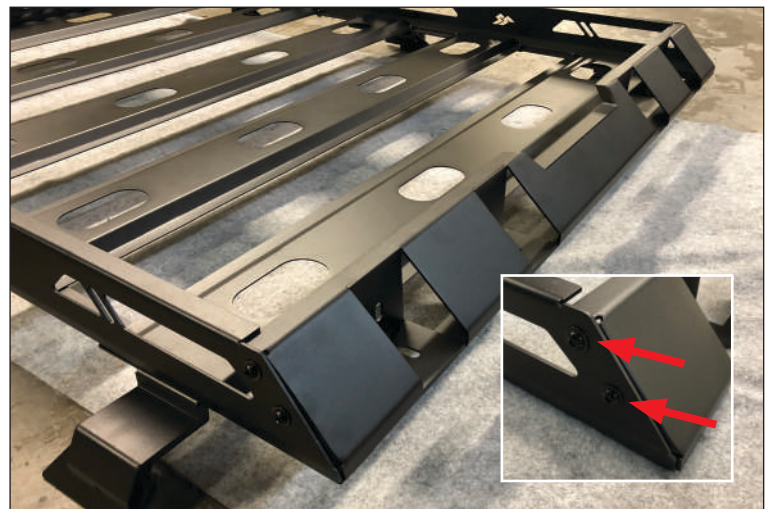
Rugged Ridge Roof Rack Basket, JL & JT

4. Here's a look at the roof rack assembled at this point. All hardware is snug but not tighten at this time.

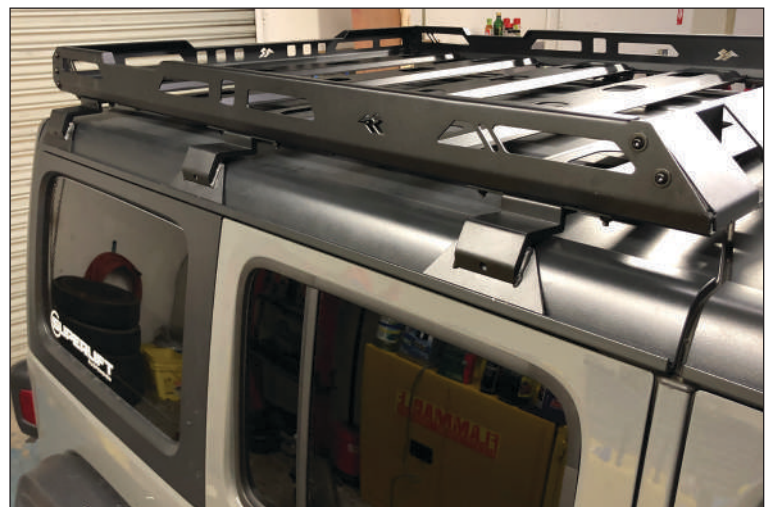


5. Now fit the front panel to the rack. It attaches with the short button head with washer and serrated flange nut. Now the rack is assembled fully tighten all the hardware except the hardware holding the roof brackets. These feet need to stay flexible to adjust to fit to the roof.

NOTE: At this time attach LED cubes to the front panel if you choose.

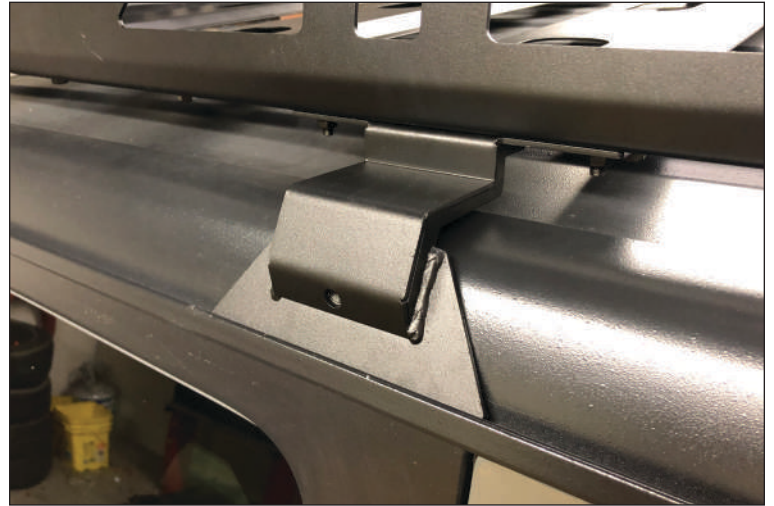


6. Now place rack on the Jeep roof. This must be done with two or more people. The rack weighs more than 100lbs so please use precaution before lifting. We also suggest place a blanket on the roof to avoid scratching the roof while placing the rack.



Rugged Ridge Roof Rack Basket, JL & JT

7. With the rack placed on the roof slide the roof brackets to fit in the roof channel. Adjust as needed and measure to assure the rack is centered and square to the Jeep.



8. Now place the roof bracket outer clamp to the roof bracket. Attach with button head bolt and washer.



9. To complete the install fully tighten the roof bracket hardware.

We strongly encourage you to keep the provided Allen key in the glove compartment. That way the roof bracket can be checked to assure them tight to the roof from time to time.

