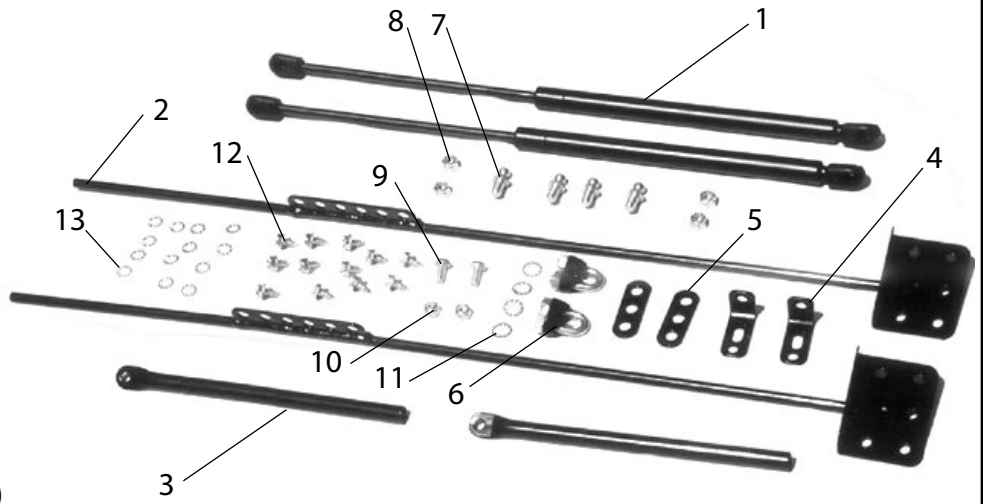


72-06 CJ, YJ, TJ, LJ HOOD LIFT

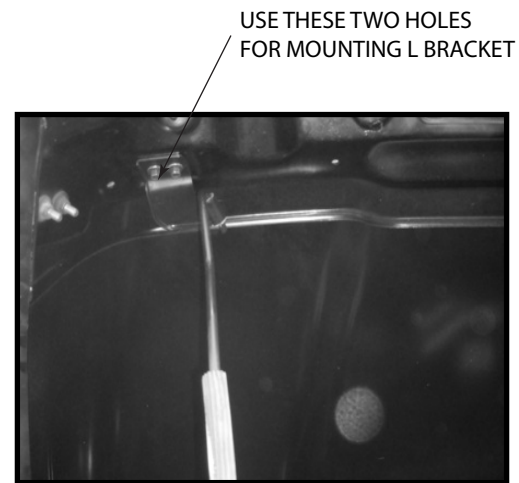
Contents:	QTY.
1. Hood Lift Strut	(2)
2. Lower Rod	(2)
3. Upper Sleeve	(2)
4. L Bracket	(2)
5. Lower Ball Stud Mount	(2)
6. U-Bolt Clamp	(2)
7. 5/16" Ball Stud	(4)
8. 5/16" Nylock Nut	(4)
9. 1/4"-20 Hex Bolt	(2)
10. 1/4"-20 Nylock Nut	(2)
11. 1/4" Flat Washer	(4)
12. #14 Sheet Metal Screw	(12)
13. #14 Lock Washer	(12)



1. Install L brackets to underside of hood. See directions below for your specific vehicle.
NOTICE: WHENEVER DRILLING IS REQUIRED, ONLY DRILL INTO SHEET METAL BRACING ON UNDERSIDE OF HOOD. BEFORE DRILLING, WRAP MASKING TAPE AROUND DRILL BIT 1.8" FROM THE TIP. DO NOT DRILL DEEPER THAN THE TAPE TO AVOID DIMPLING OR DAMAGING YOUR HOOD.

TJ/LJ

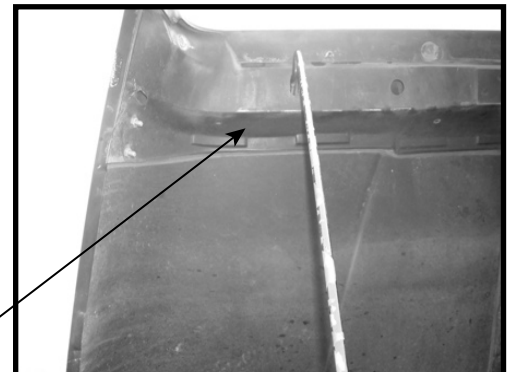
Remove factory prop rod bracket on passenger side under hood and install an L bracket in its place reusing the factory hardware as shown. Measure the location of the installed L bracket and use the dimensions to mark and drill for the driver side L bracket. Use a 5/64" bit. Do not overtighten sheet metal screws.



YJ

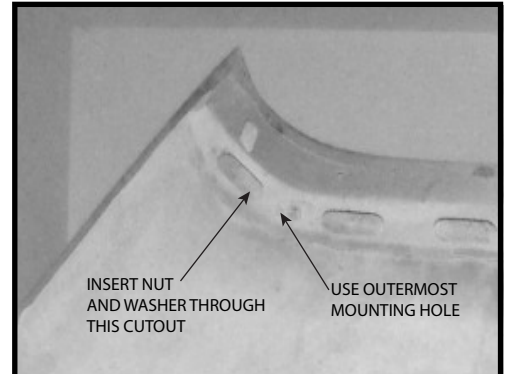
Drill both holes on the passenger side under the hood. Measure approx 6" from the edge of the hood and mark holes on front hood cross bracing using the L bracket as a guide. Drill holes to 5/64". Measure the location of the installed L bracket and use the dimensions to mark and drill for the driver side L bracket. Do not overtighten sheet metal screws.

MOUNT L BRACKET APPROX 6" FROM EDGE OF HOOD ON FRONT HOOD BRACE



72-06 CJ, YJ, TJ, LJ HOOD LIFT

CJ
Remove factory prop rod on passenger side under hood. Use the outermost hole to mount the L bracket. Mark and drill the second mounting hole to 5/64" using the L bracket as a guide. This hole should be to the left of the first hole. Insert a nut and washer in the obround cutout to retain the bolt. Measure the location of the installed L bracket and use the dimensions to mark and drill for the driver side L bracket. Do not overtighten sheet metal screws.



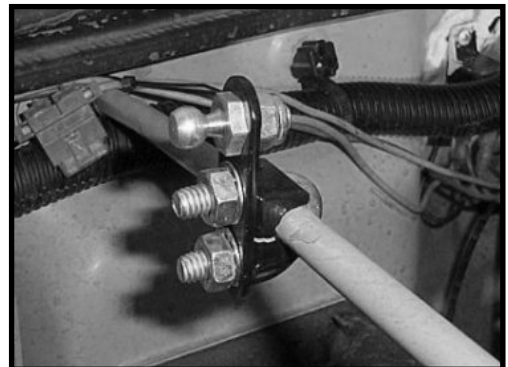
2. Locate the cross brace on the rear underside of the hood. Place lower rod on rear hood cross brace no less than 1 inch outbound of the radiator brace rod as shown. Mark holes in the bracket for mounting. It is not necessary to use all of the holes provided. Some holes may fall on cutouts and be unusable. You should be able to use at least 6 holes for each bracket including the holes on the top flange. Drill holes using a 5/64" bit being sure not to drill too deep. Secure with supplied sheet metal screws. NOTICE: SHEET METAL SCREWS ARE EASILY STRIPPED. BE NOT TO OVERTIGHTEN.



3. Slide lower rod installed in step 2 into upper sleeve. Bolt upper sleeve to L bracket mounted to hood in step 1. Use 1/4"-20 bolt with flat washers and Nylock nut as shown.

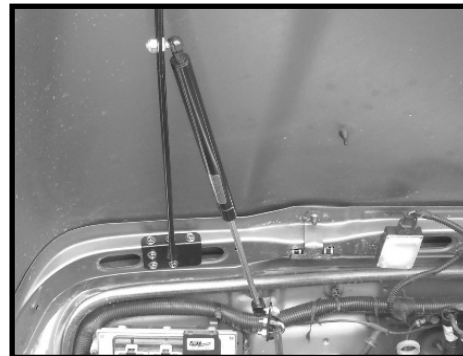


4. Bolt the lower ball stud mounting plate to the radiator brace rod about 6" from the fire wall using the supplied U-bolt. Orient the plate such that the unused hole is located above the rod. Insert a ball stud into the unused hole and tighten using a Nylock nut and washer. The ball should face outward as shown. Do this for both radiator brace rods.



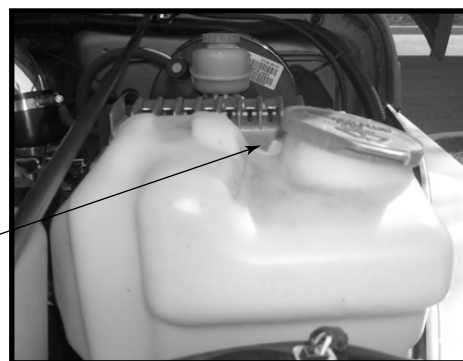
72-06 CJ, YJ, TJ, LJ HOOD LIFT

5. Insert ball stud in one of the six holes on the plate welded to the lower rod installed in step 2. Using the bottom hole will provide maximum lift while using the top hole will provide minimum lift. Be sure to use the same hole for each ball stud. Clip gas strut onto the mounted ball studs. Clip the body of the gas strut to the upper ball stud as shown.



6. Make sure all hardware is tightened. Slowly lower hood while looking underneath to make sure no interference occurs. There may be a clearance issue in TJ/LJ models with the washer fluid reservoir. This can usually be fixed by grinding down the web between the cap and the hump in the reservoir.

GRINDING THIS WEB MAY
BE NECESSARY TO AVOID
INTERFERENCE



7. Installation is now complete. No more annoying prop rod in the way when working under the hood!

