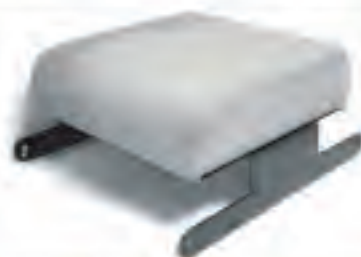


## Jeep® JK Center Console Arm Rest Installation Instructions 2007-08

- Contents:**
- (1) Arm Rest Frame (Metal)
  - (1) Arm Rest Pad
  - (4) Mounting Screws - Pad
  - (4) Black Plastic Spacer
  - (4) Frame Mounting Screws



1. Please read instructions fully prior to installing the JK Center Console Arm Rest (13107.XX). The arm rest has been designed to be a no drill application for ease of installation. Take your time when installing to avoid scratching the plastic OE vehicle console cover. The arm rest when properly installed will just touch the top of the console.

2. Open console lid and remove the rear 4 torx head screws. (use a T20 torx bit). Retain these 4 screws as they will be reused later. Remove console lid.
3. With console lid removed unscrew the 4 side torx head screws using the same T20 torx bit.
4. Place Arm Rest over console lid being careful not to scratch plastic cover.
5. Place black plastic spacers between arm rest and console as shown. Secure with longer phillips head screws supplied.
6. Repeat step 5 for other three mounting points.
7. Place console lid and arm rest back onto lower console and secure using the 4 torx head screws saved from step 2.



Step 2



Step 2-3

