



Spare Tire Spacer Installation Instructions

Part #: RT26076

Kit Components:

- Spare Tire Spacer (Qty: 1)
- Spare Tire Mount (Qty: 1)
- 1/2" - 20 Nuts (Qty: 3)
- M12 - 1.50 Nuts (Qty: 3)
- M12 - 1.25 Chrome Lug Nuts (Qty: 3)
- M12 - 1.25 x 35 Bolts (Qty: 3)
- Lock Washers (Qty: 3)
- Flat Washers (Qty: 5)
- M12 - 1 x 30 Bolts (Qty: 2)
- M12 Nylon Nuts (Qty: 2)



Installation

1. Remove spare tire and wheel.
2. Install Spare Tire Spacer using the Flat Washers, Lock Washers, and depending on the vehicle either the 1/2" - 20 Nuts or the M12 - 1.50 Nuts. (See Figure 1) Torque to 95 ft. lbs.

NOTE: Be sure to use correct size nuts. Use of incorrect nuts may result in damage of new or existing parts.

3. Thread the M12 - 1.25 x 35 Bolts with Lock Washers into the back side of the Spare Tire Mount. (See Figure 2) Torque to 95 ft. lbs.

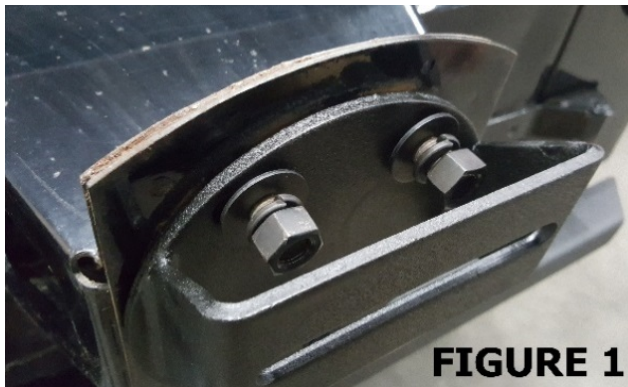


FIGURE 1



FIGURE 2

4. Attach the Spare Tire Mount to the Spare Tire Spacer using the two M12 - 1 x 30 Bolts, the remaining Flat Washers, and the two M12 Nylon Locking Nuts. (See Figure 3) Leave the bolts loose and test fit spare wheel and tire to determine if the Spare Tire Mount requires mounting offset from the Spare Tire Spacer. Once the position of the Spare Tire Mount has been determined remove the spare tire and wheel and torque the M12 bolts to 65 ft. lbs.
5. Place spare tire and wheel on Spare Tire Mount using the provided Lug Nuts. Torque to 95 ft. lbs. (Finalized product without wheel shown in Figure 4)



FIGURE 3

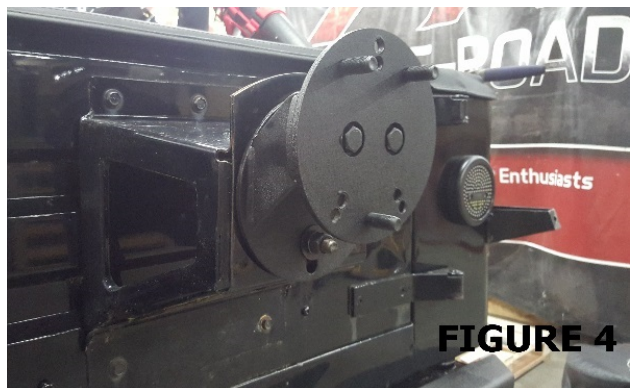


FIGURE 4

**This product is not intended for use of tires in excess of 33" in total height.*

While every attempt is made to ensure that the information contained in these instructions is correct, no liability can be accepted by the authors for loss, damage, or injury caused by any errors in, or omissions from the information given. All service should be performed by qualified mechanics. Crown Automotive Sales Co., Inc. cannot be held responsible for any mechanical work performed. Standard and accepted safety precautions should be used in every procedure.