



99-09 GM1500 2 / 4WD 1 1/2" LOWERING SHACKLES

Thank you for choosing Rough Country for all of your suspension needs.

Rough Country recommends a certified technician installs this system. In addition to these instructions, professional knowledge of disassemble/reassembly procedures as well as post installation checks must be known. Attempts to install this system without this knowledge and expertise may jeopardize the integrity and/or operating safety of the vehicle.

Please read all the instructions before beginning the installation. Check the kit hardware against the parts list. Be sure you have all the needed parts and understand where they go. If anything is missing, do not proceed with the installation, call Rough Country to obtain needed items.

Product Use Information

Do not add, alter, or fabricate any factory or after-market parts . We will not be responsible for any product that is altered.

Notice to Dealer and Vehicle Owner

Any vehicle equipped with any Rough Country product must have the ~~W~~arning to Driver+decal installed on the sun visor or dash. The decal is to act as a constant reminder for whoever is operating the vehicle of its unique handling characteristics. **INSTALLING DEALER**· It is your responsibility to install the warning decal and to forward these installation instructions on to the vehicle owner for review and to be kept in the vehicle for its service life.

It may be necessary to remove the frame mounted trailer hitch; if so equipped, to remove the shackle bolts.

Kit Contents:

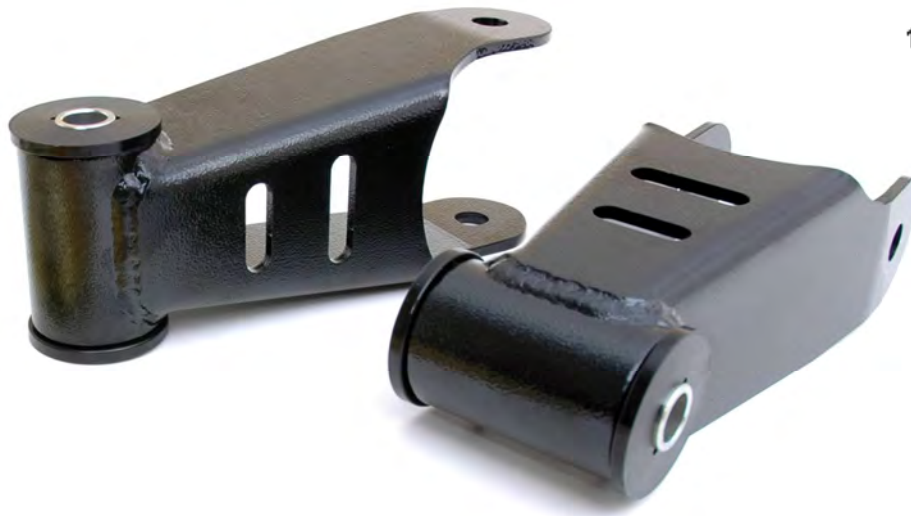
2-Rear Shackles

Tools Needed:

Floor Jack
 Jack Stands
 21mm Socket/wrench

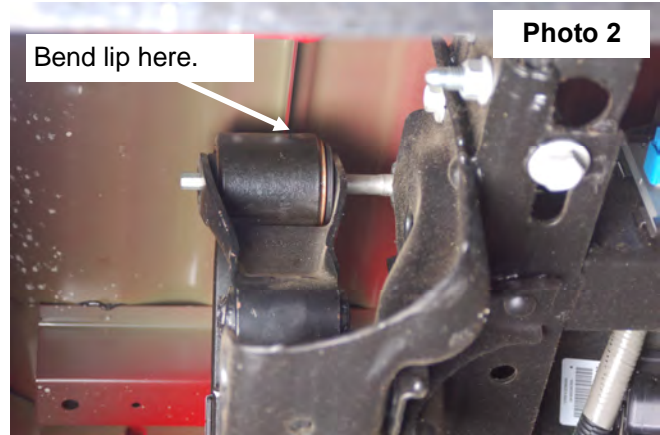
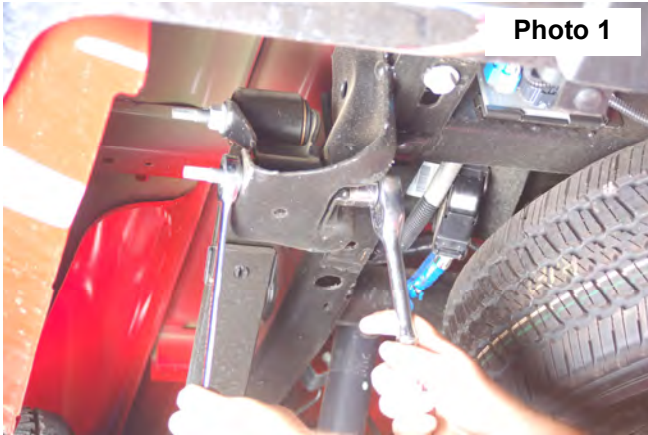
Torque Specs

Size	Grade 5	Grade 8
9/16"	95 ft/lbs	130 ft/lbs
14MM	Class 8.8 85ft/lbs	Class 10.9 120ft/lbs

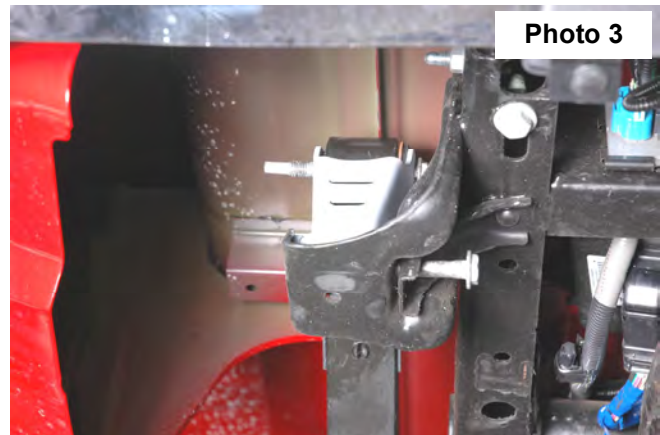


Installation Instructions

1. Jack up the rear of the vehicle using a floor jack. Both sides will be installed simultaneously to avoid binding the spring bolts.
2. Place jack stands under the frame rails to support the vehicle. With floor jack lower the vehicle onto jack stands and let the suspension hang. Leave floor jack under axle for support.
3. Lightly support the rear axle with the floor jack under the differential.
4. Remove the lower shackle bolts as shown in **Photo 1** using a 21mm socket / wrench.
5. Jack up the rear end enough to remove the upper shackle bolt. **See Photo 2. On the 07-08 models It may be necessary to slightly bend the lip of the bed to allow the shackle bolt to be removed. Or the bed bolts can be loosened to allow the bed to be pushed upward to remove the shackle bolt above the frame.**



6. Install the new shackle with the stock hardware using 21mm socket / wrench. **See Photo 3.**
7. Lower the jack and install the new shackle in the stock shackle mount with stock hardware using a 21mm wrench.
8. Install the wheels /tires.
9. Jack up the vehicle and remove the jack stands.
10. Lower the vehicle to the ground.



Some vehicles are equipped with a rear block from the factory. If so desired the factory rear block can be removed to lower the vehicle more. If the stock blocks are taken out, new u-bolts will be required. Rough Country part #7604 is recommended for the rear of the vehicle. Check with your local dealer for availability.

Post Installation

1. Check all fasteners for proper torque. Check to ensure there is adequate clearance between all rotating, mobile, and heated members. Test brake system.
2. Re torque all fasteners after 500 miles. Visually inspect components and retorqued fasteners during routine vehicle service.
3. Readjust headlights to proper settings.

Thank you for choosing Rough Country for all of your suspension needs.

**ROUGH
COUNTRY**
SUSPENSION SYSTEMS

Learn more about suspension systems on our website.