

ROUGH COUNTRY

SUSPENSION SYSTEMS®

FORD F150 09-18 EXO Bumper

Thank you for choosing Rough Country for all your vehicle needs.

Please read instructions before beginning installation. Check the kit hardware against the kit contents shown below. Be sure you have all needed parts and know where they go.

▲ NOTICE Rough Country LED lights are for off-road use only.

If factory equipped, winch bumper may interfere with parking, proximity and external cruise control sensors.

KIT CONTENTS:

1-EXO Front Bumper w/ Light Mount
 2- 2" Flush Mount LED Cubes
 1- Single Row 20" LED
 1- Dr Side Frame Bracket
 1- Pass Side Frame Bracket
 2-D-rings

HARDWARE INCLUDED:

2-12mm x 120mm Bolts
 6-1/2" Flat Washers
 8-Lock Washers
 2-1/2" Lock Nuts
 8-12mm x 35mm Bolts
 4-12mm Flat Washers
 4-12mm Lock Nuts

TOOLS NEEDED:

Pry Tool/Flat Head Screwdriver
 15mm Socket/Wrench
 19mm Socket/Wrench
 3/4" Socket



INSTALLATION INSTRUCTIONS

1. Remove the front tow hook bolt and loosen the rear bolt using a 15mm socket. Slide the tow hook free and remove from the vehicle. **Do not remove the rear bolt!! See Photo 1.**
2. Install the passenger side bracket as shown in **Photo 2** with the supplied 12mm x 35mm bolts, lock washers and flat washers in the front hole.
3. After installing the front bolt, remove the rear bolt and replace with the 12mm x 35mm bolt, lock washers and flat washers. Slightly tighten with a 19mm wrench but do not fully tighten at this time to allow for adjustment. Repeat for Driver side.



Photo 1



Photo 2

4. (Pics show assembly off the truck to better show hardware placement). Place the bumper on the frame brackets and secure bumper to the frame brackets with the supplied 12mm x 120mm bolts, 1/2" washers and 1/2" lock washers. Tighten using a 19mm socket. **See Photo 3.**
5. Install the supplied 1/2" x 1.25" bolts, flat washers and lock washers as shown in **Photo 4**. Tighten using a 3/4" socket.

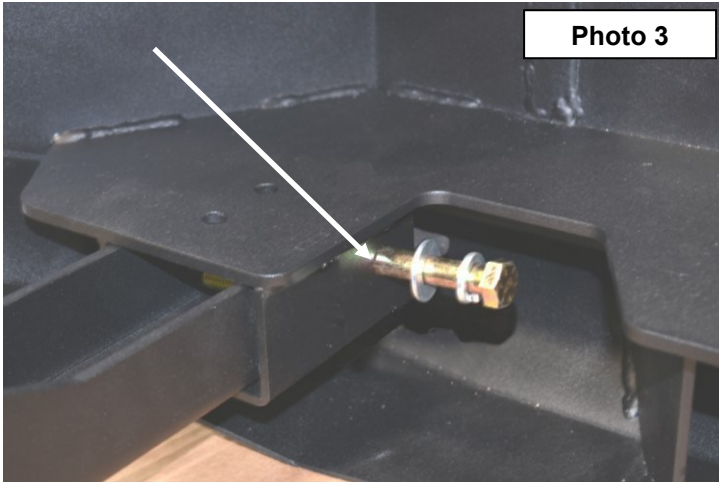


Photo 3

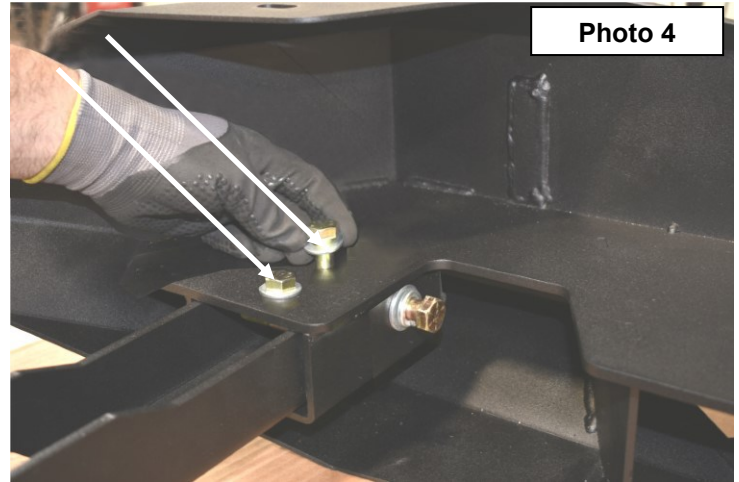


Photo 4

5. Install the LED light bar in the mount with instructions /hardware included in that kit. **See Photo 5.**
6. Install the light bar mount on the bumper with the supplied 12mm x 35mm bolts, flat washers and lock nuts. **See Photo 6.**
7. Recheck all hardware and tighten the 1/2" hardware with a 3/4" wrench and the 12mm hardware with a 19mm wrench.



Photo 5

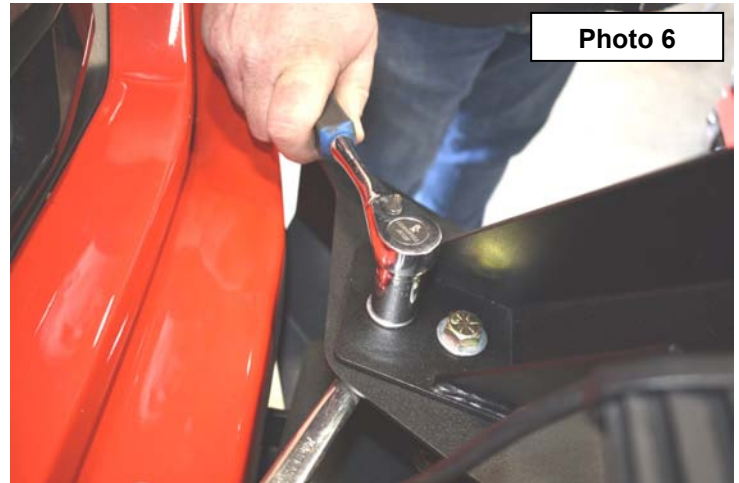


Photo 6

8. Install the supplied d-rings.
9. Install the flush mount lights and winch per instructions included in corresponding kits.

By purchasing any item sold by Rough Country, LLC, the buyer expressly warrants that he/she is in compliance with all applicable Federal, State, and Local laws and regulations regarding the purchase, ownership, and use of the item. It shall be the buyers responsibility to comply with all Federal, State and Local laws governing the sales of any items listed, illustrated or sold. The buyer expressly agrees to indemnify and hold harmless Rough Country, LLC for all claims resulting directly or indirectly from the purchase, ownership, or use of the items.



Check out the collection of winches and accessories we offer.