

# ROUGH COUNTRY

## SUSPENSION SYSTEMS®

### JEEP JK WINCH BUMPER

Thank you for choosing Rough Country for all your suspension needs.

Please read instructions before beginning installation. Check the kit hardware against the parts list. Be sure you have all needed parts and know where they go. Also please review tools needed list and make sure you have needed tools.

#### PRODUCT USE INFORMATION

Please read instructions before beginning installation. Check the kit hardware against the parts list and product layout. Be sure you have all needed parts and know where they go. Also please review tools needed list and make sure you have needed tools.

If questions exist we will be happy to answer any questions concerning the function and correct use of this product.

The installer must verify that the mounting kit does not interfere with the factory air bag sensors, which must not be relocated or modified in any way. The vehicles air bag system may not operate properly if the winch mounting kit is not mounted in compliance with the vehicle manufacturers recommendations.



#### Kit Contents:

10596-Fr Winch Bumper

D-rings x 2

20" Single Row Black LED x 1

10596bag:

12mm x 30mm Bolts x 4

12mm Nuts x 4

12mm Lock washers x 8

12mm Flat Washers x 8

4mm x 15mm Button Head Bolts x 12

4mm Nuts x 8

4mm Flat Washers x 20

4mm Lock Washers x 12

8mm x 20mm Bolts x 2

8mm Lock Washers x 2

8mm Flat Washers x 2

12mm Flag Nuts x 4

Plastic Flag Nut Retainers x 4

#### Tools Needed:

Phillips Head Screwdriver

18mm Socket/ Wrench

19mm Socket/ Wrench

Drill Motor

1/4" Drill Bit

Zip Ties

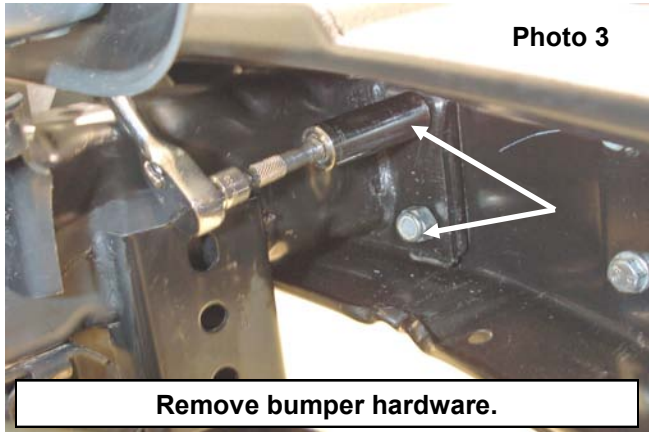


## INSTALLATION INSTRUCTIONS

1. Place vehicle on a flat surface and set emergency brake.
2. Using a small Phillips screwdriver, remove the 2 plastic screws on top of the front bumper cover. Retain Stock hardware. **See Photo 1.**
3. Remove the 4 plastic screws holding the skid plate to the front bumper, using a small Phillips screw driver Retain stock hardware. **See Photo 2.**



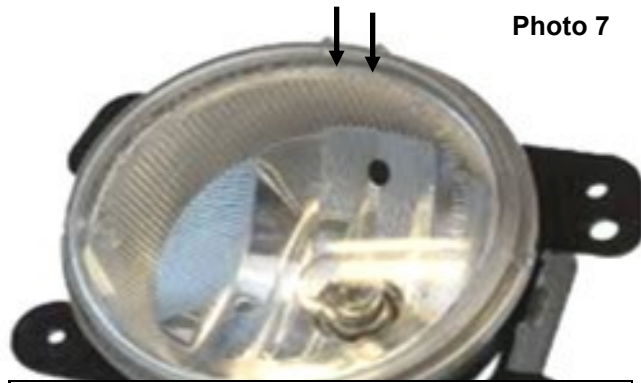
4. Using a 18mm socket, remove the 4 bolts holding the bumper to the frame horn on the driver and passenger side. **See Photo 3.**
5. Find the plug for the fog lights and unplug. Remove bumper. **See Photo 4.**



6. Remove the stock tow hook brackets if equipped.
7. After the bumper is removed. Remove the factory fog lights using a Phillips screwdriver. **See Photo 5.**
8. If reusing factory lights, drill the mounting holes in the factory fog lights using a 1/4" bit. **See Photo 6.**

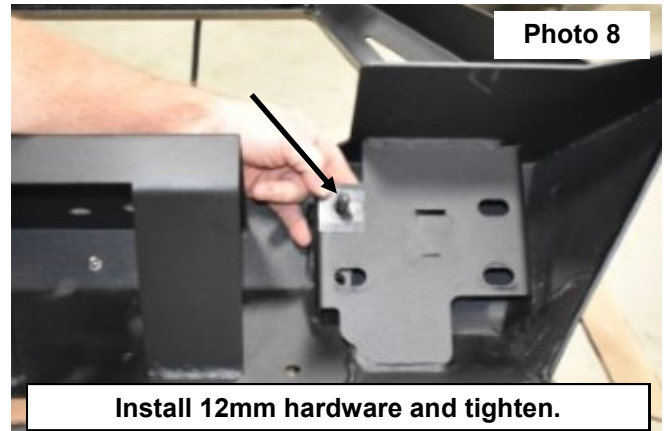


9. If using factory fog lights, sand or grind tabs off the factory fog light as shown in **Photo 7** and install the factory fog lights in the new bumper with the supplied 4mm x 15mm hardware.
10. Install the supplied 12mm flag nuts in the bumper as shown and secure with the supplied plastic retainers. **See Photo 8.**



**Photo 7**

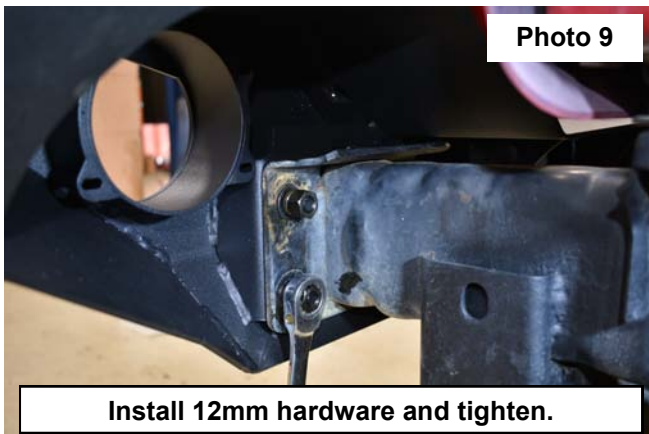
**Grind off tabs on light.**



**Photo 8**

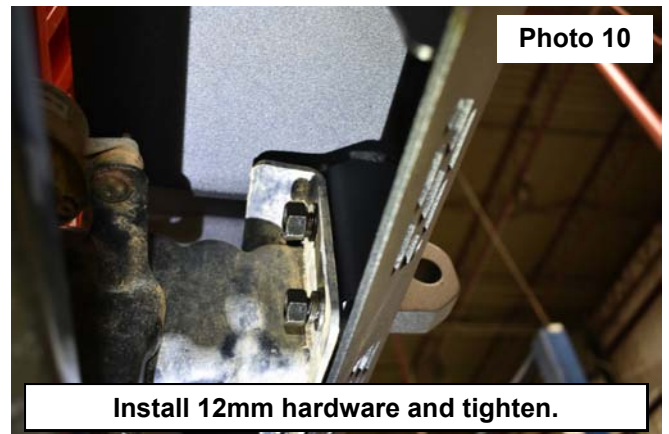
**Install 12mm hardware and tighten.**

11. Position the new front bumper on the frame mounts.
12. Secure with the supplied qty 4 flag nuts and 12mm x 30mm bolts, washers and lock nuts. **See Photo 9 & 10.** Tighten with a 19mm wrench.
13. Install LED light bar with hardware included in the light kit.
14. Install the winch per instructions included with the winch kit.



**Photo 9**

**Install 12mm hardware and tighten.**



**Photo 10**

**Install 12mm hardware and tighten.**



## MAINTENANCE INFORMATION

1. Failure to securely tighten all bolts on the winch bumper, winch, and fairlead can result in product failure, which may result in vehicle damage or operator injury. Check that all bolts are securely tightened prior to use.
2. Inspect all nuts and bolts on the winch, bumper, and related hardware prior to each use. Tighten all nuts that appear to be loose. Stripped, fractured, or bent bolts or nuts should be replaced.
3. Periodically check bolt for tightness.

## OPTIONAL ACCESSORIES FOR JK WINCH BUMPER CALL YOUR ROUGH COUNTRY DEALER TO ORDER



**ROUGH COUNTRY ELECTRIC WINCH  
AVAILABLE IN 9500LB & 12000LB**

## SYNTHETIC WINCH ROPES



## WINCH COVER



## PART # RS120 WINCH STRAP



**THANK YOU FOR CHOOSING ROUGH COUNTRY FOR YOUR OFF ROAD NEEDS.**

By purchasing any item sold by Rough Country, LLC, the buyer expressly warrants that he/she is in compliance with all applicable, State, and Local laws and regulations regarding the purchase, ownership, and use of the item. It shall be the buyers responsibility to comply with all Federal, State and Local laws governing the sales of any items listed, illustrated or sold. The buyer expressly agrees to indemnify and hold harmless Rough Country, LLC for all claims resulting directly or indirectly from the purchase, ownership, or use of the items.



Learn more about off-road bumpers we have.