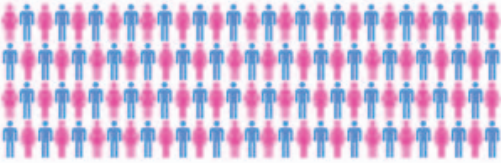




Rostra TRANSMISSION
Automatic Transmission

Rostra Precision Controls, an ISO 9001/TS 16949 certified company, in addition to supplying OEM components to some of the world’s largest auto and truck manufacturers, is also North America’s single largest supplier of transmission repair products and aftermarket 12-volt electronics. We are continuously pioneering the development and marketing of innovative automotive accessories. Backed by nearly 150 years of experience in precision manufacturing, we have earned our reputation as an ideal partner throughout the automotive industry.

Fast Facts



At our Laurinburg, NC headquarters, Ros- tra currently maintains a staff of over 100 employees between our manufacturing and business development teams.



Our product validation facilities allow us to simulate extreme real-world conditions in- cluding tests for hot and cold temperatures, along with ingress protection (IP).



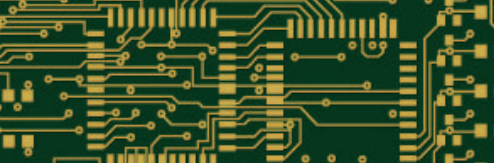
Our ability to scale production lines and add new products is largely due to our facil- ity size. Our manufacturing plant measures over 80,000 square-feet.



Our shipping and receiving department is available for shipments Monday-Friday from 9:00 AM until 4:00 PM. Six loading docks allow for easy loading and unloading.



Maintaining on-site technical support means you get answers to complicated questions quickly and from technicians that helped develop the products you install.



Rapid prototyping allows us to create new products per customer specifications at an incredibly fast pace with very little delay between product design and shipping.

Our Specialities

- Transmission solenoids, automotive sensors and controls, vacuum modulators, and transmission wire harnesses.
- Universal and vehicle-specific electronic cruise control systems.
- Vehicle rear obstacle sensing and parking assist systems.
- Comfort products including lumbar supports and seat heaters.
- Universal backup camera systems with CCD or CMOS cameras.

Design, Engineering, and Prototyping

Our innovative *Design and Engineering Department* works with virtually all phases of the manufacturing pro- cess, right up through customer technical support. This hands-on approach allows us to respond to the chang- ing demands of the marketplace.

Our sophisticated *Prototype Department* has an expert staff, working with today’s most advanced equipment. They can bring a product from concept into full reality in astonishingly little time.

We make sure that every single product undergoes the most rigorous durability testing. When a product pass- es our test, you can be sure it’s the best. Our testing facilities include:

- Thermo-Shock Chamber
- Environmental Chamber
- Hydraulic and Air Tests
- Force Displacement
- Dust Chamber
- Salt Spray Chamber
- Vibration Analysis
- Life Cycle Testing

In addition to supplying U.S. customers from our North Carolina plant, we currently export to: Australia, Bel- gium, Brazil, Canada, China, Denmark, Finland, France, Germany, Holland, Israel, Japan, Korea, Malaysia, Mexico, New Zealand, Norway, South Africa, Sweden, Switzerland, Turkey and the United Kingdom.

Installer Notes

The information in this manual has been carefully compiled through actual vehicle testing and manufacturers service manual research, and to the best of our ability is accurate. However, we do not warrant the accuracy of this information against changes in vehicle design,the use or misuse of this information, or typographical errors. It is the responsibility of the installer to verify the signal and color on the wire attachments prior to and after the installation of the accessory to assure proper op- eration of the accessory and the vehicle through a road test. We do not accept any responsibility for damage to the vehicle or injury to its occupants caused by the use of this information. Connection of incorrect wires could cause accessory or vehicle malfunctions and component damage. These conditions can cause a major risk while driving for you, your passengers and other motorists, exposing all of you to the risk of accident and injury.

At Rostra Transmission, precision manufacturing is at the heart of all that we do. As a company with an intense focus on quality control, we openly submit our manufacturing processes to annual inspections and are proud to carry both ISO 9001:2008 and TS 16949:2009 certifications. As well, Rostra Transmission employees receive training in Six Sigma process improvement strategies. Our customers know that when they buy a Rostra Transmission products, they are getting quality components every time.



ISO 9001:2008 Certification



TS 16949:2009 Certification

Product Benefits



Rostra Transmission products are manufactured in the United States



Rostra Transmission products are never remanufactured - only new



Rostra Transmission products are 100% tested and calibrated



Rostra Transmission products guaranteed for 12 months/12,000 miles

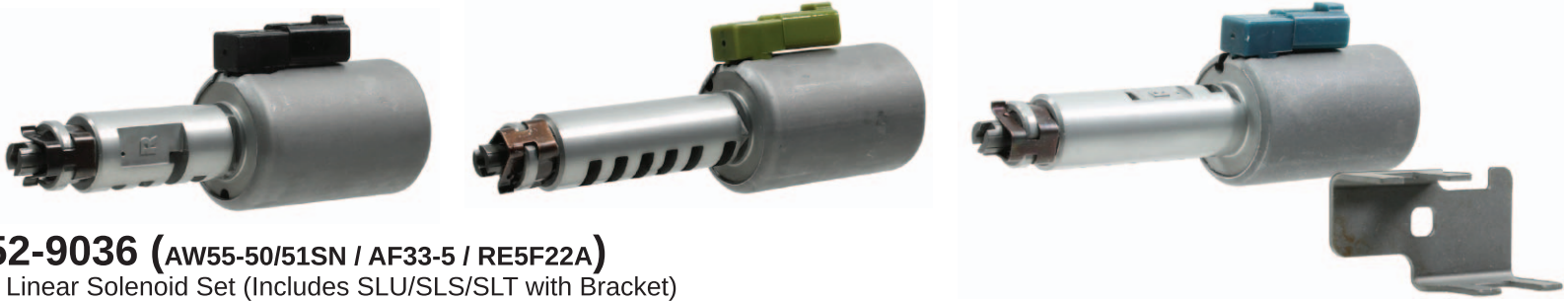


Rostra Transmission products meet or exceed OE specifications

360



Aisin Warner



52-9036 (AW55-50/51SN / AF33-5 / RE5F22A)
3 Linear Solenoid Set (Includes SLU/SLS/SLT with Bracket)



52-9042 (09G/TF60/61SN, 09D/TR60SN)
09G/D Early Linear Solenoid Set (6 Solenoids Included. Large Can Style.)



52-0533 (09G)
Shift Solenoid A or #1 (N88)
and Shift B or #2 (N89) On/Off
(2 in Unit)

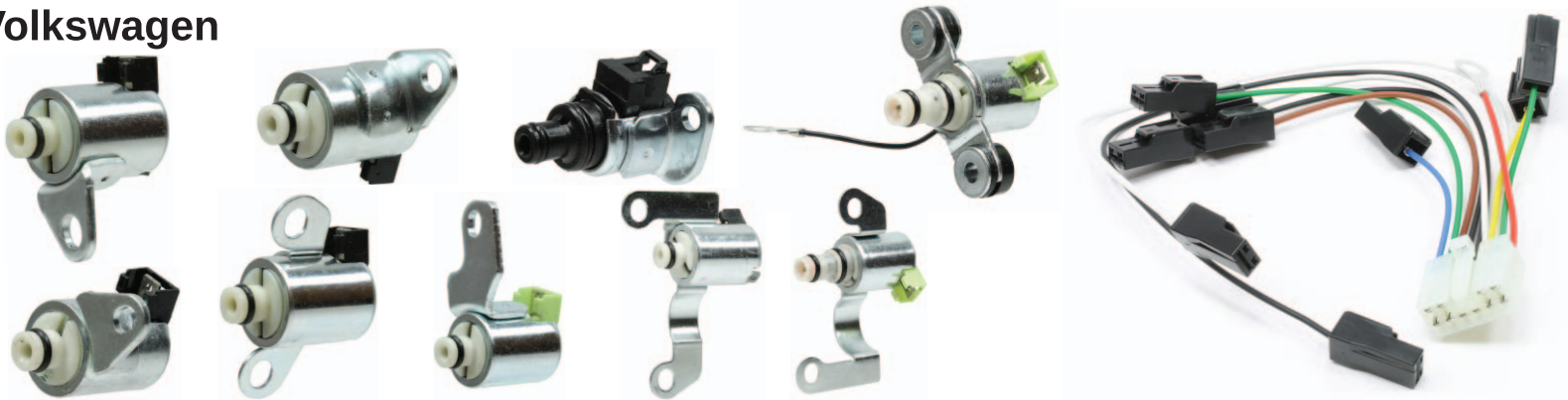


52-0566 (09G/D)
Linear Solenoid (Late 2010-on. Small Can Style.)

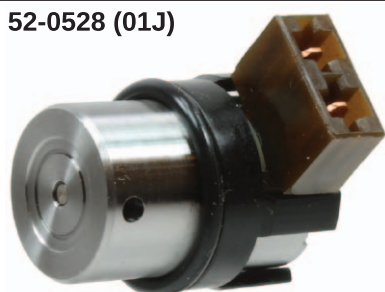


350-0151 (09G/TF60/61SN)
6-speed FWD internal wire harness with 14-Pin
Connector (2003-2014)

Volkswagen



52-9043 (JF506E/09A)
Solenoid Set with Internal Wire Harness. 10-Prong Connector with 9 One-Blade Connectors and Ground.



52-0528 (01J)
CVT Pressure Control/Safety Solenoid
(2000-13) (3 in Unit)



52-0546 (01T / 0AN)
Multitronic Pressure Control/Safety
Solenoids (3 in Unit)



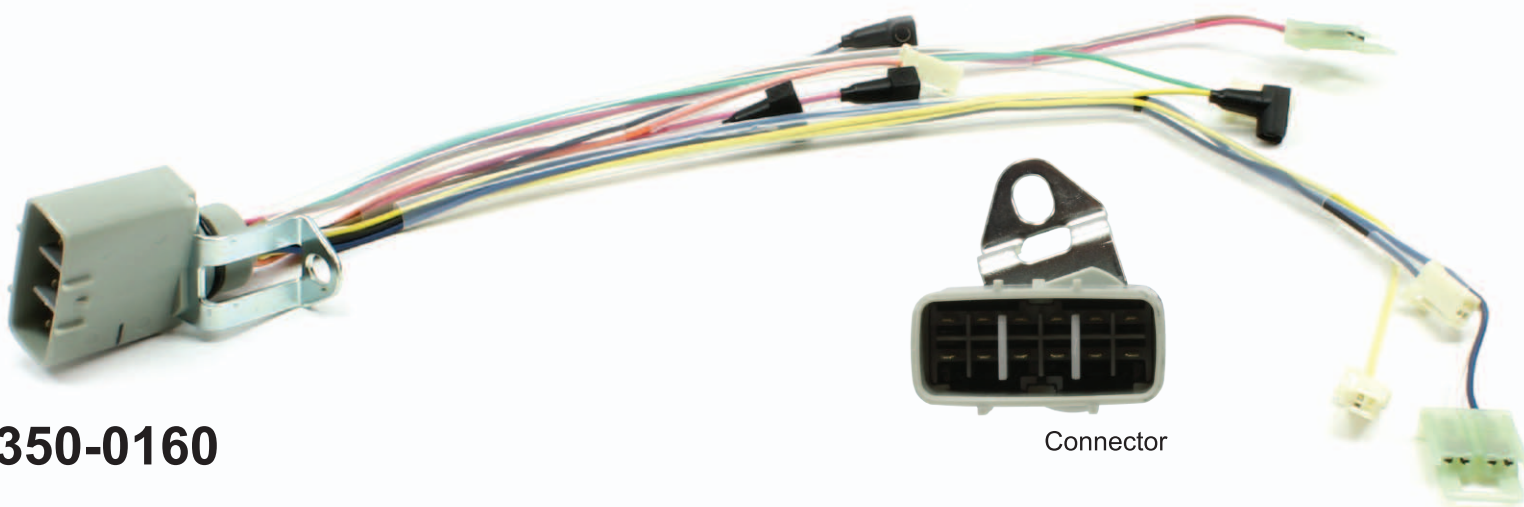
350-0070
(095/ 096/01M
097/01N / 098/01P)

Universal Wire Harness

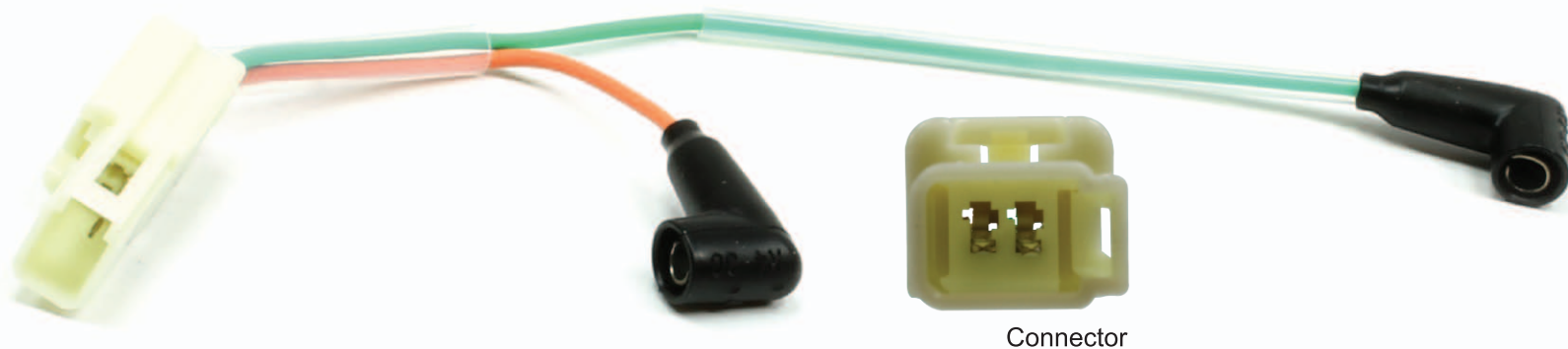
Chrysler



350-0159



350-0160

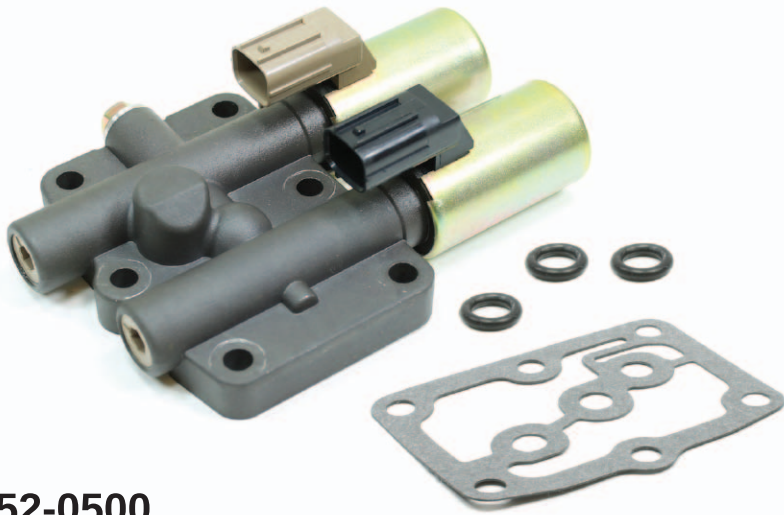


350-0161

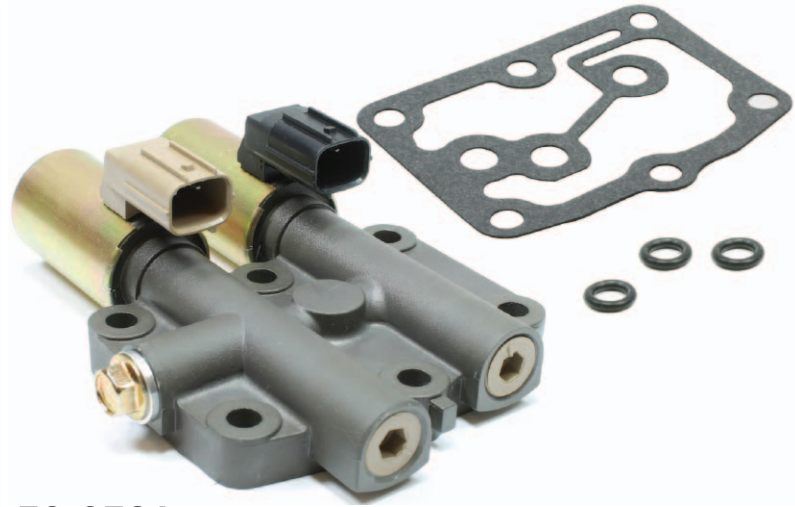
Manufacturer: Chrysler

Part Number	OE Number	Description	Years
350-1059	68020010AB / 8-98179-069-0	Solenoid A Wire Harness – Linear Solenoids A & C. Pressure Switches 4, 5, 7, 8. TFT Sensor (10-Pin Connector)	2007-2016
350-0160	68020011AB / 8-98179-070-0	Solenoid B Wire Harness – Linear Solenoids B & D. Shift Solenoids Pressure Switches 1, 2, 3, 6. (12-Pin Connector)	2007-2016
350-0161	68019703AB	Wire Harness (Internal) Pressure Switches #4 and #5	2007-2016

Honda/Acura



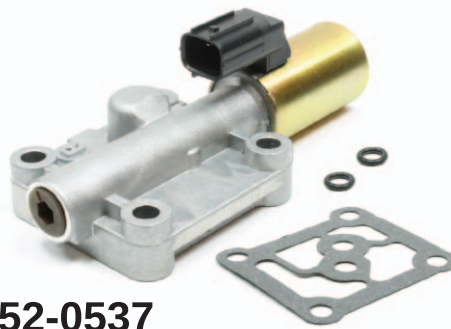
52-0500
Dual Linear Control Solenoid (see website for applications)



52-0521
Dual Linear Control Solenoid (see website for applications)



52-0536
Single Linear Control Solenoid
(see website for applications)



52-0537
Single Linear Control Solenoid
(see website for applications)



350-0146
2-Pin Solenoid Harness Repair Kit. Fits All
External On/Off and Linear Solenoids

Chrysler



52-0507 (TF8/TF6)
Lock-Up Solenoid with 2 Wires (52118595) and
Pass-Through Connector (56038235)



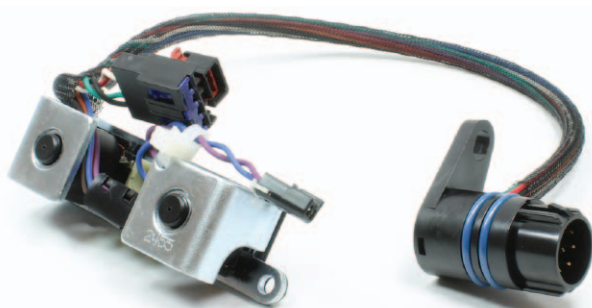
50-1168 (AS68RC)
Pressure Switch.
1/8" Style. (5 In Unit)



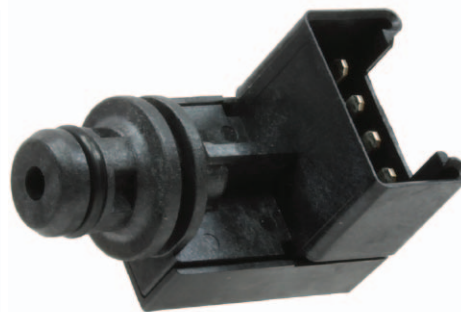
50-1169 (AS68RC)
Pressure Switch.
1/4" Style. (3 In Unit)



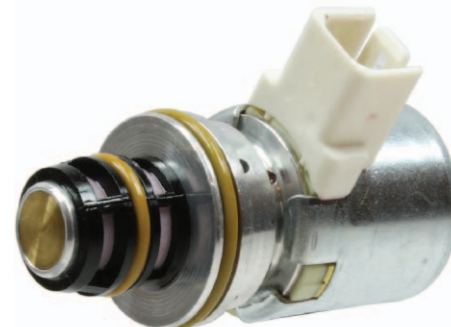
52-0593 (AS68RC)
On/Off Shift Solenoid (4 In
Unit and 12.5 Ohms)



52-0347 (46/47/48RE)
TCC and Overdrive Dual Solenoid 8-Pin
and 4-Pin Rectangular Connector

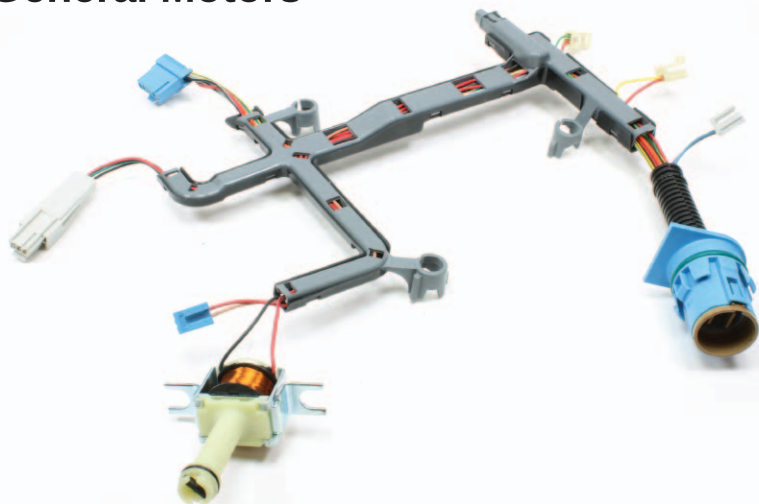


50-1017 (46/47/48RE)
Governor Pressure Transducer 4-Pin
Rectangular Connector



52-0275 (46/47/48RE)
Governor Pressure Solenoid

General Motors



350-0152 (4L60E/65E/70E)

Wire harness with 17-Pin Connector and Connector for Internal Mode Switch (2009-2012)



52-0367 (4T40/45E/65E)

EPC PWM Solenoid



350-0083

GM/Allison Universal External Repair and Test Harness (20-pin)



350-0096

GM/Allison Wire Harness Repair Kit. Plugs in to MLPS.

Jatco/Nissan



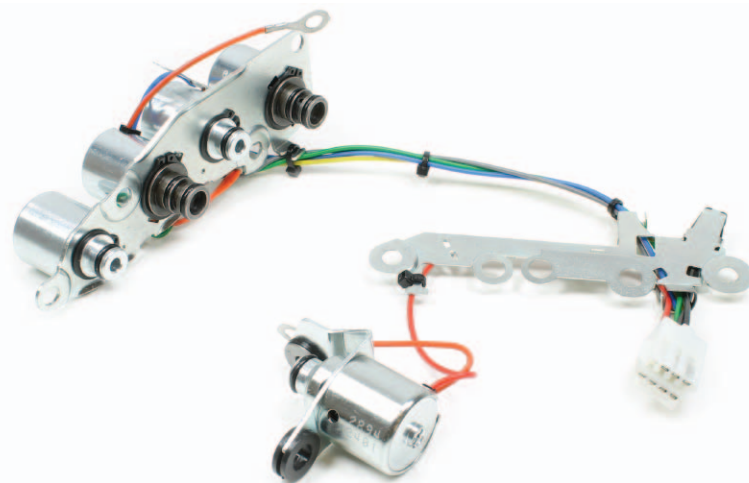
52-0538 (RE5)

Line Pressure (EPC/TCC/Front Brake Clutch. 3 in unit.) PWM Normally Vented



52-0539 (RE5)

Direct Clutch / High /Low Clutch Reverse Clutch (3 in unit) PWM Normally Applied



52-9041 (RE4F04B)

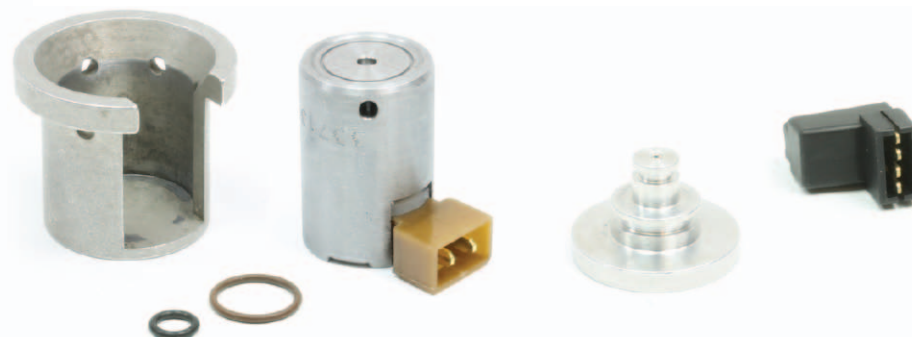
4-Speed FWD Solenoid Group (Includes 5 Solenoids)

Subaru



52-0527 (4EAT Transfer Clutch Solenoid)

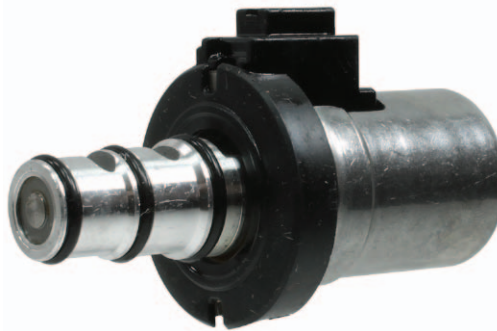
While installers must normally purchase a complete valvebody from a dealership to fix issues associated with this transmission, Rostra is pleased to be the only manufacturer offering individual solenoids that can be used to repair an existing valvebody saving both time and money for our customers.



Ford



350-0060 (AOD/E / 4R70W /4R75W)
Internal Hard Wire Track



52-0551 (4F27E)
SSPCA, SSPCB, SSPCC and PCB
PWM Solenoid (3 in Unit)



52-0396 (4F27E)
Shift Control A and B On/Off
Solenoid (2 in Unit)



350-0085 (AOD/E, 4R70W/4R75W)
Case Connector With Wire Pigtail Hard Wire Track

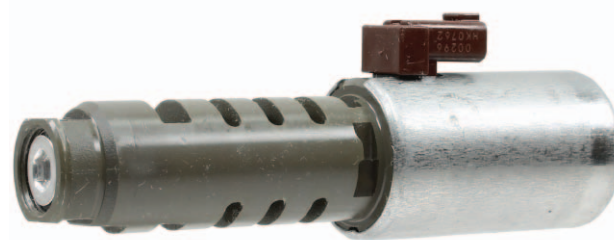
Toyota



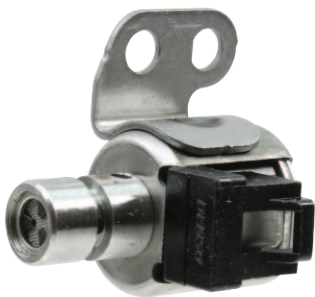
52-0569 (U660E)
SLU Linear Solenoid (Small Can)



52-0578 (U660E)
SL Shift Solenoid (Blue Connector.
On/Off. Normally Closed)



52-0579 (U660E)
SL1 and SL3 Linear Solenoid (Large Can. Brown
Connector. 2 in Unit)



52-0574 (A750E/F)
SR Shift Solenoid- Black
Connector (Normally Closed)



52-0575 (A750E/F)
S2 Shift Solenoid- Black
Connector (Normally Closed)



52-0576 (AB60E/F)
SL1 and SL2 Linear Solenoid (2 in Unit)



52-0577 (AB60E/F)
S2 Shift Solenoid-Green
Connector (Normally Open)

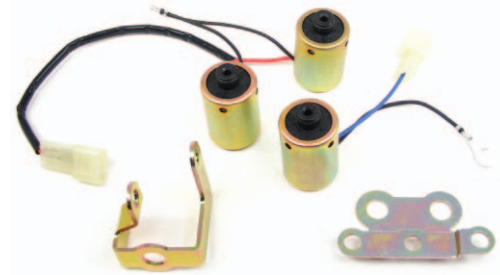
Toyota



52-9001
 OE: 85420-22080
 Solenoid Kit A240E and A241E
 (3 solenoids. 2 Shift, 1 Lock-up)



52-9002
 OE: N/A
 Solenoid Kit A340E
 (3 solenoids. 2 Shift, 1 Lock-up)



52-9003
 OE: 85420-32102
 Solenoid Kit A340E
 (3 solenoids. 2 Shift, 1 Lock-up)



52-9004
 OE: 85420-00000
 Solenoid Kit A245E and A246E
 (3 solenoids. 2 Shift, 1 Lock-up)



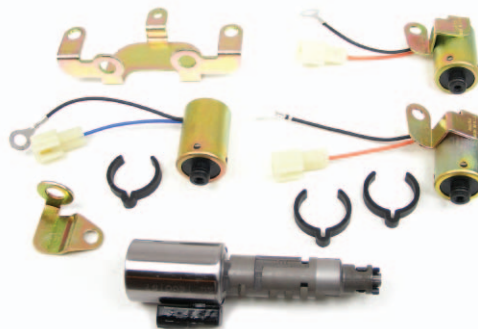
52-9021
 OE: N/A
 Solenoid Kit A341E/A343E
 (30-40LE) (2 Shift Solenoids)



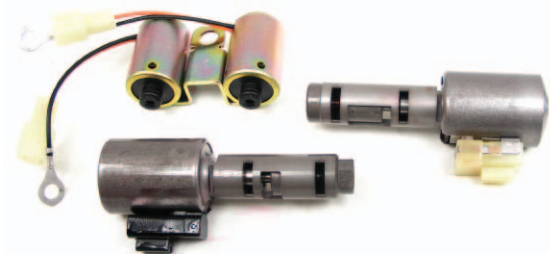
52-9022
 Solenoid Kit A541E
 (3 Solenoids. 2 Shift, 1 Lock-up)



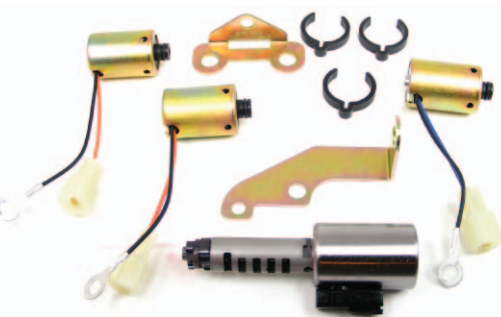
52-9026
 U140E/F, U240E/F
 (5 solenoids)



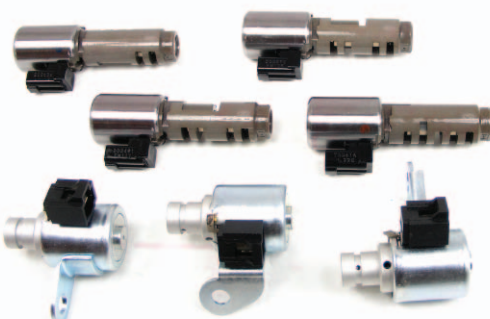
52-9029
 A340E (AW-4), A340F, A340H Kit
 (4 solenoids)



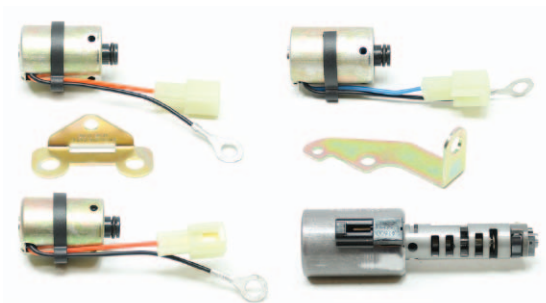
52-9030
 A341E, A341F, A343E, A343F Kit
 (4 Solenoids) SL, SLN, 2 Shift



52-9031
 A245E, A246E, A247E STL EP
 (4 solenoids 2002-2004)



52-9034
 U150E, 151E
 (7 solenoids 2004-2007)



52-9036
 A245E, A246E, A247E SLT EPC
 (4 solenoids 2004-on)

Aisin Warner

AW55-50/51SN / AF33-5 / RE5F22A

Manufacturer: General Motors/Nissan/Volvo/Saab

Part Number	OE Number	Description	Years	Ohms
52-0458	N/A	SLU Linear Solenoid (Black Connector) TCC Pressure Control, Normally Closed.*	2000-2014	5.3
52-0464	N/A	SLS Linear Solenoid (Green Connector) Shift Pressure Control, Normally Open.*	2000-2014	5.3
52-0466	N/A	SLT Linear Solenoid (Blue Connector) Line Pressure Control, Normally Open.*	2000-2014	5.3
52-0468	N/A	SS1 Shift Solenoid. No Letter ID and Early A Valve Body. Reverse and 1st Shift. Bolt On Left Side and Connector On Right-Side.	2000-2014	13.5
52-0469	N/A	SS1 Shift Solenoid. Late B and C Valvebody. Reverse and 1st Shift. Bolt On Right Side and Connector On Left Side.	2004-2014	13.5
52-0470	N/A	SS2 Shift Solenoid. Normally Closed 2-3 and 3-4 Shift. Flat Top Can.	2000-2014	13.5
52-0471	N/A	SS2 Shift Solenoid GM/Saturn/SAAB. 2-3 and 3-4 Shift. Dome Top Can.	2000-2014	13.5
52-0472	N/A	SS3 Shift Solenoid 1-2, 2-3 and Reverse Shift	2000-2014	13.5
52-0473	N/A	SS4 Shift Solenoid 3-4 and 4-5 Shift	2000-2014	13.5
52-0474	N/A	SS5 Shift Solenoid Reverse Shift	2000-2014	13
52-9036	N/A	3 Linear Solenoid Set Includes SLU/SLS/SLT with Bracket	2000-2014	5.3
52-9037	N/A	2 Linear Solenoid Set Includes SLS/SLT with Bracket	2000-2014	5.3

TF80SC / AF40-6

Manufacturer: Volvo/Peugeot/Renault/Saab/GM/Opel

Part Number	OE Number	Description	Years	Ohms
52-0483	N/A	TCC Linear Solenoid (Black Connector)	2004-2013	5.6
52-0484	N/A	C1 Clutch Linear Shift Control (Green Connector)	2004-2013	5.6
52-0484	N/A	C2 Clutch Linear Shift Control (Green Connector)	2004-2013	5.6
52-0485	N/A	C3 Clutch Linear Shift Control Solenoid (Blue Connector)	2004-2013	5.6
52-0486	N/A	B1 Band Linear Shift Control Solenoid (Brown Connector)	2004-2013	5.6
52-0486	N/A	EPC Linear Solenoid (Brown Connector)	2004-2013	5.6
52-0534	N/A	TF80/TF81 Shift Solenoid SSA and SSB On/Off (2 in Unit)	2004-2013	13.6

TF81SC / AW6A-EL / AF21

Manufacturer: Ford/Mercury/Lincoln/Mazda

Part Number	OE Number	Description	Years	Ohms
52-0483	N/A	TCC Linear Solenoid (Black Connector)	2001-2013	5.6
52-0484	N/A	EPC Linear Solenoid (Green Connector)	2001-2013	5.6
52-0484	N/A	C1 Clutch Linear Shift Control (Green Connector)	2001-2013	5.6
52-0484	N/A	C2 Clutch Linear Shift Control (Green Connector)	2001-2013	5.6
52-0485	N/A	C3 Clutch Linear Shift Control Solenoid (Blue Connector)	2001-2013	5.6
52-0485	N/A	B1 Band Linear Shift Control Solenoid (Blue Connector)	2001-2013	5.6
52-0534	N/A	TF80/TF81 Shift Solenoid SSA and SSB On/Off (2 in Unit)	2001-2013	13.6

09G / TF60/61SN

Manufacturer: VW/Audi/Porsche

Part Number	OE Number	Description	Years	Ohms
350-0149	09G927363A	09G/TF60/61SN Late Production Wire Harness With 6-Pin Connector For Input/Output Sensors. Includes Temperature Sensor (June 2004-2014)	2005-2014	N/A
350-0150	09G927363B	09G/TF60SN Early Production Wire Harness With 8-Pin Connector For Input/Output Sensors. 2 Pressure Switches. Includes Temp Sensor (2003 - May 2004)	2002-2004	N/A
350-0151	09G927363	Wire Harness with 14-Pin Connector	2003-2014	N/A
50-1167	N/A	09G/09D Pressure Switch. Normally Open (Verifies Actification of K-1 and B-2 Clutches. 2003 - May 2004)	2003-2004	N/A

* Fits both Early and Late Style Valve Bodies.

09G / TF60/61SN continued
Manufacturer: VW/Audi/Porsche

Part Number	OE Number	Description	Years	Ohms
52-0488	N/A	TCC Linear Solenoid (Black Connector)	2002-2009	5.3
52-0489	N/A	EPC Linear Solenoid (Green Connector)	2002-2009	5.3
52-0489	N/A	C1 Clutch Linear Shift Control (Green Connector)	2002-2009	5.3
52-0489	N/A	C2 Clutch Linear Shift Control (Green Connector)	2002-2009	5.3
52-0489	N/A	C3 Clutch Linear Shift Control Solenoid (Green Connector)	2002-2009	5.3
52-0489	N/A	B1 Band Linear Shift Control Solenoid (Green Connector)	2002-2009	5.3
52-0533	N/A	09G Shift Solenoid A or #1 (N88) and Shift B or #2 (N89) On/Off (2 in Unit)	2009-2013	13.6
52-0566	N/A	09G/D Linear Solenoid (Late 2010-on. Small Can Style.)	2009-2013	5.3
52-9042	N/A	09G/D Linear Solenoid Set (6 Solenoids included) (5.3 Ohms each)	2002-2009	5.3

09D/TR60SN
Manufacturer: VW/Audi/Porsche

Part Number	OE Number	Description	Years	Ohms
50-1167	N/A	09G/09D Pressure Switch. Normally Open (Verifies Actification of K-1 & B-2 Clutches)	2002-2004	N/A
52-0488	N/A	TCC Linear Solenoid (Black Connector)	2002-2012	5.3
52-0489	N/A	EPC Linear Solenoid (Green Connector)	2002-2012	5.3
52-0489	N/A	C1 Clutch Linear Shift Control (Green Connector)	2002-2012	5.3
52-0489	N/A	C2 Clutch Linear Shift Control (Green Connector)	2002-2012	5.3
52-0489	N/A	C3 Clutch Linear Shift Control Solenoid (Green Connector)	2002-2012	5.3
52-0489	N/A	B1 Band Linear Shift Control Solenoid (Green Connector)	2002-2012	5.3
52-0533	N/A	09G Shift Solenoid A or #1 (N88) and Shift B or #2 (N89) On/Off (2 in Unit)	2002-2012	13.6
52-0566	N/A	09G/D Linear Solenoid (Late 2010-on. Small Can Style.)	2010-2014	5.3
52-9042	N/A	09G/D Linear Solenoid Set (6 Solenoids included) (5.3 Ohms each)	2002-2012	5.3

AW450-43LE
Manufacturer: Isuzu / Mitsubishi

Part Number	OE Number	Description	Years	Ohms
52-9033	N/A	Solenoid Set Includes 4 Solenoids	1998-2004	N/A

Chrysler**A604 / 40TE/41TE/41TES**
Manufacturer: Chrysler

Part Number	OE Number	Description	Years	Ohms
350-0059	4419479	Repair Kit Speed Sensor Harness	1989-2012	N/A
350-0068	4419476	Repair Kit External Harness Solenoid Pack	1989-2012	N/A
50-1013	4800878	ISS (Input Speed Sensor)	1989-2012	N/A
50-1014	4800879	OSS (Output Speed Sensor)	1989-2012	N/A
50-1163	5078336AA	Oil Pressure Switch (3 Pin Black Oval Connector)	2006-2012	N/A
52-0509	05015646-AB	Solenoid Pack	1989-2012	N/A

A606 / 42LE
Manufacturer: Chrysler

Part Number	OE Number	Description	Years	Ohms
350-0059	4419479	Repair Kit Speed Sensor Harness	1993-2004	N/A
350-0069	N/A	Repair Kit External Harness, Solenoid Pack	1993-2004	N/A
50-1013	4800878	ISS (Input Speed Sensor)	1993-2004	N/A
50-1014	4800879	OSS (Output Speed Sensor)	1993-2004	N/A

42RLE
Manufacturer: Chrysler

Part Number	OE Number	Description	Years	Ohms
50-1143	04799061AB	TSS (Turbine Speed Sensor) / VSS (Vehicle Speed Sensor) (2 in Unit)	2003-2012	N/A
50-1144	52854001AA	VSS (Vehicle Speed Sensor)	2003-2012	N/A
50-1163	5078336AA	Oil Pressure Switch (3 Pin Black Oval Connector)	2006-2012	N/A

Chrysler continued

A727 / TF8, A904 / TF6

Manufacturer: Chrysler

Part Number	OE Number	Description	Years	Ohms
52-0507	Multiple	Lock-Up Solenoid with 2 Wires (52118595) and Pass-Through Connector (56038235)	1997-2004	12
52-0508	4348945	Lock-Up Solenoid with 1 Wire	1987-1996	12

A500 / 42RE/44RE

Manufacturer: Chrysler

Part Number	OE Number	Description	Years	Ohms
350-0062	N/A	Repair Kit External Harness	1993-2003	N/A
50-1012	56041403AA	Governor Pressure Transducer 4-Pin Round Connector (Also replaces OE 56027720)	1996-1999	N/A
50-1014	4800879	OSS (Output Speed Sensor)	1997-2003	N/A
50-1017	56028196AD	Governor Pressure Transducer 4-Pin Rectangular Connector	2000-2003	N/A
50-1020	56027562	Governor Pressure Transducer 3-Pin Round Connector	1993-1995	N/A
52-0264	44311954	TCC & Overdrive Dual Solenoid 3-Pin Case Connector	1990-1995	31
52-0265	45311253	Overdrive Solenoid Single 2-Pin Connector	1990-1995	31
52-0266	52118652	TCC & Overdrive Dual Solenoid 8-Pin and 4-Pin Oval Connector	1996-1999	31
52-0275	4617210	Governor Pressure Solenoid	1996-2003	3
52-0347	52118500AB	TCC and Overdrive Dual Solenoid 8-Pin and 4-Pin Rectangular Connector	2000-2003	31
52-9020	N/A	Solenoid Kit Includes 52-0266 and 50-1012	1996-1999	N/A

45RFE/545RFE/68RFE

Manufacturer: Chrysler

Part Number	OE Number	Description	Years	Ohms
50-1040	4799758	Line Pressure Transducer	1999-2010	N/A
50-1143	04799061AB	TSS (Turbine Speed Sensor) / VSS (Vehicle Speed Sensor) (2 in Unit)	1999-2010	N/A

A518/46RE / A618/47RE

Manufacturer: Chrysler

Part Number	OE Number	Description	Years	Ohms
350-0062	N/A	Repair Kit External Harness	1993-2003	N/A
50-1012	56041403AA	Governor Pressure Transducer 4-Pin Round Connector (Also replaces OE 56027720)	1996-1999	N/A
50-1014	4800879	OSS (Output Speed Sensor)	1997-2003	N/A
50-1017	56028196AD	Governor Pressure Transducer 4-Pin Rectangular Connector	2000-2003	N/A
52-0264	44311954	TCC & Overdrive Dual Solenoid 3-Pin Case Connector	1990-1995	31
52-0265	45311253	Overdrive Solenoid Single 2-Pin Connector	1990-1995	31
52-0266	52118652	TCC & Overdrive Dual Solenoid 8-Pin and 4-Pin Oval Connector	1996-1999	31
52-0275	4617210	Governor Pressure Solenoid	1996-2003	3
52-0347	52118500AB	TCC & Overdrive Dual Solenoid 8-Pin and 4-Pin Rectangular Connector	2000-2003	31
52-9020	N/A	Solenoid Kit Includes 52-0266 & 50-1012	1996-1999	N/A

48RE

Manufacturer: Chrysler

Part Number	OE Number	Description	Years	Ohms
50-1014	4800879	OSS (Output Speed Sensor)	2003-2007	N/A
50-1017	56028196AD	Governor Pressure Transducer 4-Pin Rectangular Connector	2003-2007	N/A
52-0275	4617210	Governor Pressure Solenoid	2003-2007	3
52-0347	52118500AB	TCC & Overdrive Dual Solenoid 8-Pin and 4-Pin Rectangular Connector	2003-2007	31

A670

Manufacturer: Chrysler

Part Number	OE Number	Description	Years	Ohms
52-0263	4799954AA	TCC Torque Converter Clutch Solenoid	1987-2000	31

W5A580 / 722.6

Manufacturer: Chrysler/ Mercedes/Jaguar

Part Number	OE Number	Description	Years	Ohms
52-0408	140-277-0435	TCC PWM Solenoid With One O-Ring	1996-2012	2.9

AS68RC
 Manufacturer: Chrysler

Part Number	OE Number	Description	Years	Ohms
50-1168	68019699AA	AS68RC Pressure Switch. 1/8" Style. (5 In Unit) (Also replaces Isuzu 8-98179-072-0)	2007-2014	N/A
50-1169	68019700AA	AS68RC Pressure Switch. 1/4" Style. (3 In Unit) (Also replaces Isuzu 8-98179-073-0)	2007-2014	N/A
52-0593	68019702AA	AS68RC On/Off Shift Solenoid (4 In Unit) (Also replaces Isuzu 8-98179-071-0)	2007-2014	12.5

Ford/Mazda

E40D/4R100
 Manufacturer: Ford

Part Number	OE Number	Description	Years	Ohms
350-0066	3U2Z-14S411-VNA	External Repair Harness	1989-1994	N/A
350-0067	3U2Z-14S411-VCA	External Repair Harness	1995-2007	N/A
50-1062	F5TZ-7A247-AA	MLPS Switch (Manual Lever Position Switch)	1989-1996	N/A
50-1137	F85Z-2L373-AB	Differential Mounted VSS (Vehicle Speed Sensor)	1993-2007	N/A

5R110W
 Manufacturer: Ford

Part Number	OE Number	Description	Years	Ohms
50-1142	3C3Z-7H141-AA	TFT Sensor (Transmission Fluid Temp)	2003-2012	N/A

A4LD
 Manufacturer: Ford

Part Number	OE Number	Description	Years	Ohms
350-0055	E7SZ-7E499-A	Case Connector (3 Prongs and Pigtail)	1989-1994	N/A
350-0091	F2PZ-14A464-A	External Speed Sensor Harness Repair Kit	1992-1994	N/A
52-9005	N/A	Solenoid Kit With TCC/Shift Solenoids and Case Connector	1989-1994	N/A

4R44E/55E
 Manufacturer: Ford

Part Number	OE Number	Description	Years	Ohms
350-0091	F2PZ-14A464-A	External Speed Sensor Harness Repair Kit	1997-2008	N/A
50-1137	F85Z-2L373-AB	Differential Mounted VSS (Vehicle Speed Sensor)	1997-2008	N/A
50-1138	F7RZ-7H103-BA	OSS (Output Speed Sensor)	1997-2008	N/A
52-0436	F77Z-7G484-AB	Shift and Coast Solenoid (4 in Unit)	1995-1996	27

5R55E
 Manufacturer: Ford

Part Number	OE Number	Description	Years	Ohms
350-0091	F2PZ-14A464-A	External Speed Sensor Harness Repair Kit	1997-2008	N/A
50-1137	F85Z-2L373-AB	Differential Mounted VSS (Vehicle Speed Sensor)	1997-2008	N/A
50-1138	F7RZ-7H103-BA	OSS (Output Speed Sensor)	1997-2008	N/A
50-1139	F5TZ-7M101-A	Input Center/Turbine Speed Sensor	1997-2008	N/A
50-1141	XW4Z-7M183-AA	Input Speed Sensor on Case	1997-2008	N/A
52-0436	F77Z-7G484-AB	Shift and Coast Solenoid (4 in Unit)	1997-2008	27.3
52-0437	F77Z-7G136-AA	TCC PWM Solenoid With Inductive Signal	1997-2008	10
52-0438	XL2Z-7G383-AA	EPC Solenoid With Inductive Signal, Two Red Screens	1997-2008	4.5

5R55W/N/S
 Manufacturer: Ford

Part Number	OE Number	Description	Years	Ohms
50-1019	F2PZ-14A464-G	Fluid Pressure Sensor (Ford/Jaguar)	1999-2002	N/A
50-1140	F2PZ-14A464-A	Input/Turbine Speed Sensor	2000-2010	N/A
50-1141	F1DZ-7G484-AA	TSS/Intermediate Shaft Speed Sensor	2000-2010	N/A

AOD/E / 4R70W /4R75W
 Manufacturer: General Motors

Part Number	OE Number	Description	Years	Ohms
350-0060	F8AZ-7G276-BA	Internal Hard Wire Track	1998-2008	N/A

Ford continued

AOD/E / 4R70W /4R75W continued

Manufacturer: General Motors

Part Number	OE Number	Description	Years	Ohms
350-0064	F2PZ-14A464-G	Universal External Repair Harness	1992-2012	N/A
350-0085	F8AZ-7G276-AA	Case Connector With Wire Pigtail Hard Wire Track	1998-2008	N/A
350-0091	F2PZ-14A464-A	External Speed Sensor Harness Repair Kit	1992-2003	N/A
350-0095	F2VY-7G276-A	AODE/4R70W Connector & Wire Harness (Soft Wire Type)	1992-1997	N/A
50-1039	3L3Z-7M101-AA	Turbine Speed Sensor On Center of Case	2004-2012	N/A
50-1137	F85Z-2L373-AB	Differential Mounted VSS (Vehicle Speed Sensor)	1990-2012	N/A
52-0212	F7AZ-7G484-AA	On/Off Shift Solenoid	1992-1997	20
52-0229	F5AZ-7G136-A	Modulated TCC Solenoid - White Connector	1995-1997	13
52-0402	6L3Z-7G484-A	Dual Shift Solenoid Hard Wire Type	1998-2008	25
52-0481	9L3Z-7G484-A	Dual Shift Solenoid Soft Wire Type	2009-2012	24
52-0511	F6AZ-7G383-AA	AODE/4R70W EPC Soft Wire Type Solenoid	1992-1997	4.2
52-0512	F8AZ-7G136-AA	4R70/75E/W TCC (PWM) Hard Wire Type Solenoid	1998-2008	13.3
52-0513	F8AZ-7G383-AA	4R70/75E/W EPC Hard Wire Type Solenoid (Can Replace 52-0514)	1998-2000	4.3
52-0514	XL3Z-7G383-AB	4R70/75E/W EPC Hard Wire Type Solenoid	1998-2004	4.3
52-0515	5C2Z-7G383-AB	4R70/75E/W EPC Hard Wire Type Solenoid	2005-2008	4.3

AXOD/E / AX4S / AX4N / AF50N

Manufacturer: Ford

Part Number	OE Number	Description	Years	Ohms
350-0064	F2PZ-14A464-G	Universal External Repair Harness	1992-2007	N/A
350-0091	F2PZ-14A464-A	External Speed Sensor Harness Repair Kit	1992-2003	N/A
52-0213	F1DZ-7G484-AA	On/Off Shift Solenoid (3 in Unit)	1992-2007	20
52-0404	F3DZ-7G484-AA	On/Off Shift Solenoid (3 in Unit) - (AX4N Use 52-0213)	1995-2007	20
52-0215	F1DZ-7G136-A	On/Off TCC Solenoid	1986-1991	20
52-0218	F3DZ-7G136-A	Modulated TCC Solenoid (Except 1991 Taurus/Sable)	1991-1997	1.3
52-0254	F70Z-7G136-AA	Modulated TCC Solenoid (Blue Connector)	1997-2007	14
52-0368	F3DZ-7G136-A	Modulated TCC Solenoid (White Connector. Except 1991 Taurus/Sable)	1991-1997	1.3

FNA-EL/4F27E

Manufacturer: Ford/Mazda

Part Number	OE Number	Description	Years	Ohms
52-0396	XS4Z-7H148-AA	Shift Control A and B On/Off Solenoid (2 in Unit)	1999-2014	15
52-0551	XS4Z-7G448-AA	Shift Control C, D and E PWM Solenoid (4 in Unit)	1999-2014	3.5

FNR5/FS5A-EL

Manufacturer: Ford/Mazda

Part Number	OE Number	Description	Years	Ohms
52-0396	XS4Z-7H148-AA	SSD and SSE On/Off Solenoid (2 in Unit)	2006-2014	15
52-0551	XS4Z-7G448-AA	SSPCA, SSPCB, SSPCC and PCB PWM Solenoid (3 in Unit)	2006-2014	3.5

CD4E

Manufacturer: Ford/Mazda

Part Number	OE Number	Description	Years	Ohms
52-0516	F6RZ-7G391-A	Solenoid Pack	1994-2007	N/A

6F35E

Manufacturer: Ford

Part Number	OE Number	Description	Years	Ohms
50-1166	9L8Z-7H103AA	VSS (Vehicle Speed Sensor) 3 Wire Harness with 4-Prong Connector	2009-2014	N/A

BTR

Manufacturer: BTR

Part Number	OE Number	Description	Years	Ohms
52-0480	0593-640076	BTR 93/97LE On/Off Shift Solenoid (6 in Unit)	1989-2006	28

General Motors

TH180C/3L30

Manufacturer: General Motors

Part Number	OE Number	Description	Years	Ohms
52-0233	96040316	TCC/Lock-up Solenoid	1988-1999	24

TH200C /TH200-4R

Manufacturer: General Motors

Part Number	OE Number	Description	Years	Ohms
52-0203	10478100	TCC/Lock-up Solenoid (TH200C, 1979-1987. TH200-4R, 1981-1990)	1979-1990	20

TH325-4L

Manufacturer: General Motors

Part Number	OE Number	Description	Years	Ohms
52-0210	8646419	TCC/Lock-up Solenoid	1982-1985	20

MX17/A210

Manufacturer: General Motors

Part Number	OE Number	Description	Years	Ohms
52-0227	91171049	Shift On/Off Solenoid With Bracket	1985-2001	12

TH350C

Manufacturer: General Motors

Part Number	OE Number	Description	Years	Ohms
52-0430	N/A	Universal Lock-Up Solenoid High Performance	1978-1987	24

4L30E

Manufacturer: GM/BMW/ISUZU/HONDA/OPEL

Part Number	OE Number	Description	Years	Ohms
52-0241	24210864	TCC/PWM Solenoid (Also Replaces OE 8-96042-666-0)	2000-2004	11
52-0340	24220158	EPC PWM Force Motor (Holley, 2 Prongs on Bottom) (Also replaces OE 24209276)	1990-1999	4.5
52-0438	XL2Z-7G383-AA	EPC PWM Force Motor (Bosch, 2 Prongs on Side)	2000-2004	4.5
52-0445	96014182	EPC PWM Force Motor	1990-1999	4
52-0522	96014593	1-2 and 3-4 Shift Solenoid	1990-2004	19
52-0524	96014183	TCC Lock-Up Solenoid	1990-1999	19

4L40E/5L40E/5L50E

Manufacturer: General Motors/BMW

Part Number	OE Number	Description	Years	Ohms
52-0240	96042599	TCC Solenoid	1982-1992	11
52-0407	96022804	Shift 1-2, Shift 2-3, Shift 4-5 Solenoid Green Connector (3 in Unit)	1982-1992	16

TH700R4/4L60

Manufacturer: General Motors

Part Number	OE Number	Description	Years	Ohms
350-0039	10478100	Internal Wire Harness with Lock-up Solenoid	1982-1992	20
50-1006	8673299	VSS (Vehicle Speed Sensor) 2" OD	1982-1992	N/A
52-0203	10478100	TCC/Lock-up Solenoid	1982-1992	20

4L60E/65E/70E

Manufacturer: General Motors

Part Number	OE Number	Description	Years	Ohms
350-0014	N/A	External Repair Harness Connector with 13 Wires	1993-1998	N/A
350-0020	N/A	Internal Wire Harness with Lock-up Solenoid	1993-2002	20
350-0025	12143296	Internal Wire Harness with Anti-bleed Lock-up Solenoid	1993-2002	20
350-0056	12101899	2-Pin VSS External Repair Harness	1995-2003	N/A
350-0061	15320476	Internal Wire Harness with Anti-bleed Lock-up Solenoid	2003-2006	20

4L60E/65E/70E continued

Manufacturer: General Motors

Part Number	OE Number	Description	Years	Ohms
350-0063	N/A	ECM Diagnostic Repair Kit With 3 Wires and Terminals	1993-2015	N/A
350-0077	15305920	PRNDL Harness Repair Kit. Two Connector Type (4 and 7-Prong Connectors)	1993-2003	N/A
350-0078	24234121	Internal Wire Harness With Lock-up Solenoid and Internal Sensor	2006-2008	20
350-0083	N/A	GM Universal External Repair and Test Harness (20 Pins and White Wires)	1993-2015	N/A
350-0096	N/A	Wire Harness Repair Kit. Plugs in to MLPS (Switch Part # 50-1054). 11-Prong.	2004-2008	N/A
350-0152	24237980	4L65/70E Harness. 17-Pin Connector with Connector for Internal Mode Switch	2009-2015	20
50-1002	24219581	Pressure Switch Manifold	1993-2008	N/A
50-1006	8673299	VSS (Vehicle Speed Sensor) 2" OD	1993-1996	N/A
50-1043	24226520	Output Speed Sensor 1" OD Hole (Also replaces OE 10456520)	1996-2015	N/A
50-1044	12376520	Output Speed Sensor (AWD Units Only). Located On Transfer Case.	1999-2015	N/A
50-1054	24221125	GM 4L65-E MLPS	2004-2008	N/A
52-0240	24227792	On/Off 3-2 Downshift Solenoid '93-'95 and TCC '96-'12 (Also 24212327/24227747)	1993-2015	11
52-0251	24212327	3-2 Downshift On/Off Solenoid	1996-2008	22
52-0322	N/A	TCC Anti-Bleed Solenoid With Quick Link Connectors	1993-2015	20
52-0340	24209276	EPC PWM Solenoid. Black Can. 2-Prong Bottom Connector. (Also replaces 24209276)	1993-2002	4.5
52-0348	10478131	Shift A and Shift B Solenoid On/Off	1993-2015	22
52-0518	24224905	Variable Force Motor (EPC Solenoid) (Also replaces OE 24230632)	2003-2015	N/A

4L80E/85E

Manufacturer: General Motors

Part Number	OE Number	Description	Years	Ohms
350-0032	24230344	Internal Wire Harness (Also replaces OE 24241218)	1991-2003	N/A
350-0033	12154288	External Wire Harness	1991-2009	N/A
350-0056	12101899	2-Pin VSS External Repair Harness	1991-2009	N/A
350-0071	24224908	Internal Wire Harness	2004-2009	N/A
350-0077	15305920	PRNDL Harness Repair Kit. Two Connector Type (4 and 7-Prong Connectors)	1991-2000	N/A
350-0083	N/A	GM Universal External Repair and Test Harness (20 Pins and White Wires)	1994-2009	N/A
350-0096	N/A	Wire Harness Repair Kit. Plugs in to MLPS (Switch Part # 50-1054). 11-Prong.	2001-2009	N/A
350-9000	24200161	Internal and External Harness Kit	1991-2003	N/A
50-1000	24200695	Pressure Switch Manifold	1991-2009	N/A
50-1007	24203876	ISS (Input Speed Sensor) and OSS (Output Speed Sensor)	1991-2009	N/A
50-1044	12376520	Output Speed Sensor AWD Units Only Located on Transfer Case	1999-2009	N/A
50-1054	24221125	GM 4L80/85-E MLPS (11 Pin Connector)	2001-2009	N/A
52-0241	24210864	TCC/PWM Solenoid	1991-2009	11
52-0445	96014182	EPC PWM Force Motor. Silver Can. 2-Prong Connector On Bottom.	1991-1993	4
52-0340	2422015	EPC PWM Solenoid. Black Can. 2-Prong Bottom Connector. (Also replaces 24209276)	1994-2003	4.5
52-0478	24225320	EPC PWM Force Motor. Silver. 2-Prong Side Connector. (Also 24230986/24219308)	2004-2009	22
52-0356	10478147	Shift A and Shift B Solenoid On/Off Fits Both Locations	1991-2009	4.5

6L80E

Manufacturer: General Motors

Part Number	OE Number	Description	Years	Ohms
50-1044	12376520	Output Speed Sensor AWD Units Only Located On Transfer Case	1999-2012	N/A

Saturn TAAT

Manufacturer: General Motors/Saturn

Part Number	OE Number	Description	Years	Ohms
350-0079	21024415	External Repair Harness	1995-2002	N/A
52-0517	21003344-3289	Shift Solenoid with White Top	1993-2002	N/A

TH125C/3T40

Manufacturer: General Motors

Part Number	OE Number	Description	Years	Ohms
350-0053	8689901	Internal Wire Harness with Lock-up Solenoid (2-Spade Connector)	1981-2001	N/A
52-0210	8646419	TCC/Lock-up Solenoid	1981-2001	20

4T40/45E

Manufacturer: General Motors

Part Number	OE Number	Description	Years	Ohms
350-0083	N/A	GM Universal External Repair and Test Harness (20 Pins and White Wires)	1995-2011	N/A
50-1003	24200495	Pressure Switch Manifold	1995-2003	N/A
50-1010	24207507	VSS (Vehicle Speed Sensor)	1995-2011	N/A
50-1035	24217544	Pressure Switch Manifold 3 Switch Type	2004-2011	N/A
50-1165	24219476	MLPS and NSS Switch (11-Pin Connector)	2004-2011	N/A
52-0240	24227792	TCC Solenoid (Also replace OE 24212690)	1995-2011	11
52-0357	24207236	Shift A and Shift B Solenoid On/Off	1995-2011	22
52-0367	10478146	EPC PWM Solenoid	1995-2002	4.5

TH440-T4/4T60

Manufacturer: General Motors

Part Number	OE Number	Description	Years	Ohms
52-0210	8646419	TCC/Lock-up Solenoid	1984-1993	20

4T60E

Manufacturer: General Motors

Part Number	OE Number	Description	Years	Ohms
350-0036	12143000	Internal Wire Harness	1994-1999	N/A
350-0038	N/A	Universal External Repair Harness	1991-1999	N/A
350-0040	12082980	Internal Wire Harness TCC PWM	1991-1993	N/A
350-0041	12082981	Internal Wire Harness Non-PWM	1991-1993	N/A
350-0056	12101899	2-Pin VSS External Repair Harness	1991-1999	N/A
52-0239	8683535	TCC/PWM Solenoid	1991-1999	11
52-0358	24202614	Shift A and Shift B Solenoid. On/Off and TSS On/Off Solenoid. (3 in Unit)	1991-1999	22

4T65E

Manufacturer: General Motors/Volvo

Part Number	OE Number	Description	Years	Ohms
350-0075	24229643	Universal Internal Wire Harness	1997-2011	N/A
350-0083	N/A	GM Universal External Repair and Test Harness (20 Pins and White Wires)	1997-2011	N/A
50-1004	24203699	Pressure Switch Manifold	1997-2002	N/A
50-1018	24216426	Pressure Switch Manifold (1-Prong Type)	1993-2011	N/A
50-1036	24238955	ISS Input Sensor (Exposed Metal Pickup Type) (Also Replaces OE 10456509)	1997-2011	N/A
50-1136	24232088	VSS Vehicle Speed Sensor (Long Connector Type) (Also Replaces OE 10456568)	1999-2011	N/A
50-1145	24210702	OSS/Output VSS Sensor	1999-2006	N/A
50-1146	24211397	ISS/Input TSS Sensor	1999-2006	N/A
52-0240	24227747	TCC PWM Solenoid (Also Replaces OE 24214974)	1997-2010	11
52-0357	24207236	Shift A and Shift B Solenoid On/Off	1997-2010	22
52-0367	10478146	EPC PWM Solenoid	1997-2002	4.5

4T80E continued

Manufacturer: General Motors

Part Number	OE Number	Description	Years	Ohms
350-0083	N/A	GM Universal External Repair and Test Harness (20 Pins and White Wires)	1994-2011	N/A

General Motors continued

4T80E continued

Manufacturer: General Motors

Part Number	OE Number	Description	Years	Ohms
50-1001	24200770	Pressure Switch Manifold	1994-2011	N/A
50-1008	24204319	OSS/Output Sensor No Harness	1994-2011	N/A
50-1009	24207491	ISS Input Sensor 9.5" Harness	1996-2011	N/A
50-1016	24232616	ISS Input Sensor 14" Harness	1994-1995	N/A
52-0240	24227792	TCC PWM Solenoid (Also 8683187)	1994-2011	11
52-0340	24209276	EPC PWM Black Can Solenoid (2-Prong, Bottom Connector) (Also 24220158)	1994-2003	4.5
52-0478	24225320	EPC PWM Silver Can Solenoid (2-Prong, Side Connector) (Also 24230986/24219308)	2004-2011	4.5

Allison

LCT1000/2000/2400

Manufacturer: General Motors/Allison

Part Number	OE Number	Description	Years	Ohms
350-0072	29541371	Internal Wire Harness - 6 Solenoid Type 20-Pin Main Connector	1999-2003	N/A
350-0077	15305920	PRNDL Harness Repair Kit. Two Connector Type (4 and 7-Prong Connectors)	1999-2003	N/A
350-0083	N/A	GM Universal External Repair and Test Harness (20 Pins and White Wires)	1999-2012	N/A
350-0086	29539792	Internal Wire Harness 7 Solenoid Type 20-Pin Main Connector	2003-2006	N/A
350-0087	29543336	Internal Wire Harness 7 Solenoid Type 20-Pin Main Connector (GM Truck)	2006-2009	N/A
350-0088	29543334	Internal Wire Harness 7 Solenoid Type 21-Pin Main Connector (Non GM)	2006-2009	N/A
350-0096	N/A	Wire Harness Repair Kit. Plugs in to MLPS Switch (Part # 50-1055)	2003-2006	N/A
50-1034	29542585	Pressure Switch Manifold 4 Button Type (Blue). Replaces 6 Button Type	2000-2012	N/A
50-1055	29541852	Allison LCT1000 MLPS (1 Connector Type)	2003-2006	N/A
50-1147	29536408	ISS/Input Sensor/OSS/ Output VSS Sensor / TSS/ Turbine Speed Sensor	2000-2012	N/A
52-0240	24227747	Lock-Up F Trim PWM Solenoid	2000-2005	N/A
52-0251	24212327	Shift C, D and E Solenoid	2000-2005	22
52-0251	24212327	Modulated Pressure Control Solenoid "G"	2004-2012	22

Honda/Acura

Part Number	OE Number	Description	Years	Ohms
350-0146	N/A	2-Pin Solenoid Harness Repair Kit. Fits All External On/Off and Linear Solenoids	1997-2014	N/A
350-0147	N/A	1-pin Pressure Switch Repair Harness	1997-2014	N/A
50-1028	28600-P6H-003	2nd and 3rd Clutch Pressure Switch. 38 PSI. Green Connector. Stepped. *	1997-2014	N/A
50-1029	28600-P7Z-003	2nd and 3rd Clutch Pressure Switch. 33 PSI. Black Connector. Stepped. *	1997-2011	N/A
50-1030	28600-P7W-003	2nd and 3rd Clutch Pressure Switch. 27 PSI. Beige Connector. Stepped. *	2000-2011	N/A
50-1050	28810-RWE-003	5AT Speed Sensor	2007-2011	N/A
50-1051	28820-RWE-003	Output Speed Sensor	2007-2011	N/A
50-1052	28810-RZH-004	ISS and VSS	2007-2012	N/A
50-1057	28820-PCJ-014	Input/Output Speed Sensor	2001-2012	N/A
50-1058	28810-P7W-004	Input/Output Speed Sensor	2001-2005	N/A
50-1059	28600-RPC-003	2nd and 3rd Clutch Pressure Switch. 29 PSI. Yellow Connector.	2006-2011	N/A
50-1060	28600-RKE-004	2nd and 3rd Clutch Pressure Switch. 26 PSI. Beige Connector.	2005-2008	N/A
50-1061	28600-RCL-004	2nd and 3rd Clutch Pressure Switch. 40 PSI. Green Connector.	2003-2008	N/A
52-0475	28400-P6H-003	Shift B Solenoid External (Black Connector) (Also replaces OE 28400-P6H-013)	1997-2007	15.3
52-0476	28500-P6H-003	Shift C Solenoid External (Brown Connector) (Also replaces OE 28500-P6H-013)	1997-2007	15.3
52-0500	28250-P6H-024	Dual Linear Control Solenoid (View Applications Online)	1997-2007	5.6
52-0501	28400-PRP-004	Shift A Solenoid Brown Connector (3 in Unit)	2002-2012	16
52-0502	28500-PRP-004	Shift B Solenoid Black Connector (2 in Unit)	2002-2012	16

* Will replace non-stepped version with equal PSI.

Honda/Acura continued

Part Number	OE Number	Description	Years	Ohms
52-0521	28250-RDK-014	Dual Linear Control Solenoid (View Applications Online)	2003-2009	5.6
52-0536	28250-P7W-003	Single Linear Control Solenoid (View Applications Online)	2000-2007	5.6
52-0537	28260-RDK-023	Single Linear Control Solenoid (View Applications Online)	2003-2009	5.6

Mitsubishi / Hyundai

F4A41/42/F5A51

Manufacturer: Hyundai/Mitsubishi/Kia/Chrysler

Part Number	OE Number	Description	Years	Ohms
50-1049	42620-39051	Input Speed Sensor (TSS)	1996-2010	N/A
50-1056	42621-39200	Output Sensor (F4A41,42,51/F5A51) (Also replaces OE 42621-39052)	1996-2010	N/A
52-0532	46313-39050/51	4 and 5-Speed. 5-6 in unit. (Also replaces OE MD758981)	1996-2010	3.9

KM Series

Manufacturer: Hyundai/Mitsubishi

Part Number	OE Number	Description	Years	Ohms
52-0258	N/A	Shift A Solenoid On/Off	1985-1999	22
52-0259	N/A	Shift B Solenoid On/Off	1985-1999	22
52-0260	N/A	Lock-Up Solenoid PWM	1985-1993	3
52-0261	N/A	Lock-Up Solenoid PWM	1993-1999	12
52-0262	N/A	EPC PWM Solenoid	1987-1999	12
52-9009	N/A	Solenoid Kit Includes 2 Shift (1 EPC and 1 Lock-Up)	1985-1993	3
52-9010	N/A	Solenoid Kit Includes 2 Shift (1 EPC and 1 Lock-Up)	1993-1999	12

A4BF3/AFAF3

Manufacturer: Hyundai

Part Number	OE Number	Description	Years	Ohms
52-9023	46313-22700	Solenoid Set Includes 6 Solenoids With Case Connector	2000-2011	N/A

Mazda/Ford

N4A-EL

Manufacturer: Mazda/Ford

Part Number	OE Number	Description	Years	Ohms
52-0226	BV01-21-280A	Solenoid Assembly with Harness (Includes 4 Solenoids)	1988-1993	15

G4A-EL/4EAT-G/GF4A-EL

Manufacturer: Mazda/Ford

Part Number	OE Number	Description	Years	Ohms
52-0204	FU84-21-280	Solenoid Assembly with Harness (Includes 4 Solenoids)	1987-1993	15
52-0235	FU50-21-280B	Solenoid with Harness. 1 Solenoid Valve Body	1986-1992	15
52-0242	FU9A-21-1G1A	TCC/Lock-up Solenoid & EPC Solenoid (2 in Unit)	1993-2002	12
52-0296	FU9A-21-1F2C	Lock-up Control Solenoid	1993-2002	15
52-0297	FU9A-21-1F1D	1-2 Shift Solenoid	1993-2002	15
52-0298	FU9A-21-1F5D	3-2 Downshift Solenoid	1993-2002	15
52-0299	FU9A-21-1F3D	3-4 Shift Solenoid	1993-2002	15
52-0300	FU9A-21-1F4D	2-3 Shift Solenoid	1993-2002	15
52-9007	N/A	Solenoid Set with 7 Solenoids	1993-2002	N/A

F4A-EL/4EAT-F

Manufacturer: Mazda/Ford

Part Number	OE Number	Description	Years	Ohms
52-0231	FU62-21-280	Solenoid Assembly with Harness (Includes 4 Solenoids)	1990-2003	15
52-0341	FB02-21-1G1C	EPC Solenoid	1997-2003	3
52-0542	FU61-21-280D	Mazda F4A-EL/4EAT-F 2-3 and 3-4 Shift Solenoid	1990-2003	15
52-0543	FB02-21-285A	Mazda F4A-EL/4EAT-F 1-2 Shift Solenoid	1990-2003	15
52-0544	FU61-21-286B	Mazda F4A-EL/4EAT-F TCC Lock-Up Solenoid	1990-2003	15

JF506E/JA5A-EL

Manufacturer: Mazda/Ford

Part Number	OE Number	Description	Years	Ohms
50-1037	FP01-21550	Speed Sensor Input, Output & Turbine	2002-2007	N/A
52-0422	31941-PM002	Reduction Timing Solenoid	2002-2007	17
52-0423	31941-PM005	Neutral Shift Control Solenoid	2002-2007	17
52-0431	31941-PM003	Shift C Solenoid	2002-2007	16
52-0432	31941-PR000	Shift B Solenoid	2002-2007	16
52-0433	31941-PM004	Shift A Solenoid	2002-2007	16
52-0529	31941-PR015	VW / Mazda JF506E/09A EPC Pressure Control Solenoid	2002-2007	3.0

Jatco/Nissan**RE4R01A and RE4R03A**

Manufacturer: Nissan

Part Number	OE Number	Description	Years	Ohms
52-0272	31940-41X10	RE4R01A/3A TCC Solenoid	1988-2011	14.5
52-9038	31940-41X09/13	Solenoid Group (4 Solenoids)	1988-2011	N/A

RE4F04A

Manufacturer: Nissan

Part Number	OE Number	Description	Years	Ohms
52-9040	31940-80X25	4-Speed FWD Solenoid Group (5 Solenoids)	1992-2007	N/A

RE4F04B

Manufacturer: Nissan

Part Number	OE Number	Description	Years	Ohms
52-9041	31940-85X01	4-Speed FWD Solenoid Group (5 Solenoids)	2000-2007	N/A

RE5R05A

Manufacturer: Nissan

Part Number	OE Number	Description	Years	Ohms
52-0538	31941-90X01	Line Pressure (EPC/TCC/Front Brake Clutch. 3 in unit.) PWM Normally Vented	2002-2014	3.3
52-0539	31941-90X00	Direct Clutch / High /Low Clutch Reverse Clutch (3 in unit) PWM Normally Applied	2002-2014	3.3
52-0540	31941-1XF02	Low Coast Clutch (EPC) (1 in unit) On/Off Normally Closed	2002-2014	23
52-0541	31941-1XA02	Low Coast Clutch (EPC) Brown Top (Infinity 2002-8/1/05)	2002-2005	6.4

Renault/Citroen/Peugeot**DPO/AL4 & DP2/AT8**

Manufacturer: Renault/Citroen/Peugeot

Part Number	OE Number	Description	Years	Ohms
52-0519	7701208174	EPC & TCC Solenoid (2 in Unit. Also matches OE number 0000257416.)	2003-2014	N/A
52-0520	7700102977	Shift Solenoid (6 in Unit. Also matches OE number 0000257419.)	2003-2014	N/A

Subaru**4EAT**

Manufacturer: Subaru

Part Number	OE Number	Description	Years	Ohms
52-0527	N/A	Subaru 4EAT Phase II Version II, Transfer Clutch Duty Solenoid	2004-2009	4.5

Toyota/Lexus**A750E/F**

Manufacturer: Toyota/Lexus

Part Number	OE Number	Description	Years	Ohms
50-1041	84540-04010	Neutral Safety Switch NSS 7 Pin/2 Blade Connector	2003-2014	N/A
50-1042	89413-32010	Input/Output Sensor	2003-2014	N/A
52-0574	35230-60010	Toyota/Lexus A750E/F SR Shift Solenoid- Black Connector (Normally Closed)	2003-2014	12
52-0575	35250-60010	Toyota/Lexus A750E/F S2 Shift Solenoid- Black Connector (Normally Closed)	2003-2014	13.3

A760E/761E

Manufacturer: Toyota/Lexus

Part Number	OE Number	Description	Years	Ohms
50-1042	89413-32010	Input/Output Sensor (2 in unit)	2004-2014	N/A
52-0505	35240-50060	AB60E/F SR Solenoid Green Connector	2004-2014	13
52-0506	35240-50030	AB60E/F S1 and S3 Solenoid Black Connector (2 in Unit)	2004-2014	13
52-0576	35210-50010	AB60E/F SL1 and SL2 Linear Solenoid (2 in Unit)	2004-2014	5.5
52-0577	35240-50040	AB60E/F S2 Shift Solenoid-Green Connector (Normally Open)	2004-2014	13.5

AB60E/F

Manufacturer: Toyota/Lexus

Part Number	OE Number	Description	Years	Ohms
50-1045	89413-0C020	Input/Output Sensor (2 in Unit)	2007-2014	N/A
52-0505	35240-50060	AB60E/F SR Solenoid Green Connector	2007-2014	13
52-0506	35240-50030	AB60E/F S1 and S3 Solenoid Black Connector (2 in Unit)	2007-2014	13
52-0576	35210-50010	AB60E/F SL1 and SL2 Linear Solenoid (2 in Unit)	2007-2014	5.5
52-0577	35240-50040	AB60E/F S2 Shift Solenoid-Green Connector (Normally Open)	2007-2014	13.5

A140E/L

Manufacturer: Toyota/Lexus

Part Number	OE Number	Description	Years	Ohms
52-0201	85420-32021	1-2 Shift Solenoid On/Off Triangle-Shaped Slip-On Bracket	1983-2004	12
52-0451	85420-32021	1-2 Shift Solenoid On/Off w/ OE Design Bracket	1983-2004	12
52-0202	85420-32041	2-3 Shift Solenoid On/Off L-Shaped Slip-On Bracket	1983-2004	12
52-0230	N/A	Shift Solenoid Kit With 2 Solenoids & Brackets (Universal for A140E/A240/A340)	1983-2004	12
52-0450	85420-32041	2-3 Shift Solenoid On/Off W/ OE Design Bracket	1983-2004	12

A240 Series

Manufacturer: Toyota/Lexus

Part Number	OE Number	Description	Years	Ohms
52-0204	85240-22080	Shift Solenoid 2 Per Unit with Slip-On Bracket	1985-2008	12
52-0448	85240-22080	Shift Solenoid 2 Per Unit with OE Design Bracket	1985-2001	12
52-0223	85420-10011	Overdrive Cancel Solenoid (A240/A241/A242/A243/A244)	1985-1992	12
52-0230	N/A	Shift Solenoid Kit With 2 Solenoids and Brackets (Universal for A140E/A240/A340)	1985-2008	12
52-0236	85420-12061	TCC Lock-Up Solenoid	1985-1999	12
52-0256	85420-21040	Shift Solenoid Kit With 2 Shift Solenoids and Slip-On Bracket (A245/A246)	1993-2008	12
52-0449	85420-21040	Shift 1 Solenoid OE Design with Bracket (A245/A246)	1993-2008	12
52-0257	85420-21060	TCC Lock-Up Solenoid With Two Slip-On Brackets (fit up to 2008 A245/A246 Units)	1993-2008	12
52-0453	85420-21060	TCC Lock-Up Solenoid with OE Design Bracket (A245/A246/A247 Units)	1993-2001	12
52-0403	35290-12020	SLT, EPC Solenoid (A245/A246/A247)	2002-2003	5.3
52-0419	35290-12030	EPC Linear Solenoid	2004-2008	5.1
52-0454	85240-21010	Shift 2 Solenoid OE Design with Bracket (A245/A246/A247)	1993-2008	12
52-9001	85420-22080	Solenoid Kit with 2 Shift and 1 Lock-up Solenoids	1985-1999	N/A
52-9004	85420-00000	Solenoid Kit with 2 Shift and 1 Lock-up Solenoids	1993-2008	N/A
52-9031	N/A	Solenoid Kit with 4 Solenoids (A245/A246/A247)	2002-2003	N/A
52-9035	N/A	Solenoid Kit with 4 Solenoids (A245/A246/A247)	2004-2008	N/A

A340 Series

Manufacturer: Toyota/Lexus

Part Number	OE Number	Description	Years	Ohms
52-0204	85240-22080	Shift Solenoid with Slip-On Bracket (2 in Unit)	1987-2004	12
52-0448	85240-22080	Shift Solenoid with OE Design Bracket (2 in Unit)	1987-2004	12

Toyota continued

A340 Series continued...
 Manufacturer: Toyota/Lexus

Part Number	OE Number	Description	Years	Ohms
52-0205	85420-30110	Lock-up On/Off Solenoid with Slip-On Bracket (Normally Open)	1985-2004	12
52-0452	85420-30110	Lock-up On/Off Solenoid with OE Design Bracket	1985-2004	12
52-0230	N/A	Shift Solenoid Kit with 2 Solenoids and Brackets (Universal for A140E/A240/A340)	1987-2009	12
52-0399	35270-50010	SLN Accumulator Control Solenoid	1990-2002	5.3
52-0400	35280-50010	SL, Lock-Up Solenoid	1990-2002	5.3
52-0401	35290-60020	SLT, EPC Solenoid	2000-2005	5.3
52-9002	N/A	Solenoid Kit With 2 Shift and 1 Lock-up Solenoids	1987-2004	N/A
52-9021	N/A	Solenoid Kit With 2 Shift Solenoids	1993-2005	12
52-9029	N/A	Solenoid Kit With 4 Solenoids	1987-2004	N/A
52-9030	N/A	Solenoid Kit With 4 Solenoids, SL, SLN and 2 Shift	1993-2002	N/A

A540E/H/A541E
 Manufacturer: Toyota/Lexus

Part Number	OE Number	Description	Years	Ohms
52-0222	85420-32091	Shift Solenoid 1 and Shift Solenoid 2 (2 Solenoids in Kit) With Bracket	1988-1993	12
52-0224	85420-32110	TCC On/Off Solenoid	1988-1993	12
52-0234	85240-33010	Shift Solenoid Kit With 2 Shift Solenoids and Bracket	1994-2005	12
52-0355	35240-33010	TCC Lock-Up Solenoid	1994-2005	12
52-9003	85420-32102	Solenoid Kit With 2 Shift and 1 Lock-up Solenoids	1988-1993	N/A
52-9022	N/A	Solenoid Kit With 2 Shift and 1 Lock-up Solenoids	1994-2005	N/A

U140E/F, U240E/F, 241E
 Manufacturer: Toyota/Lexus

Part Number	OE Number	Description	Years	Ohms
52-0377	35240-21010	Lock-Up DSL 3-Way Solenoid	2000-2014	12
52-0388	35230-21010	SS3,S4 Shift 3 Solenoid	2000-2014	12
52-0389	35210-21010	SL1 Shift 1 Solenoid	2000-2014	5.1
52-0390	35220-21010	SL2 Shift 2 Solenoid	2000-2014	5.1
52-0393	35290-32010	SLT EPC Solenoid	2000-2014	5.1
52-9026	N/A	Solenoid Kit With 5 Solenoids	2000-2014	N/A

U340E, 341E/F
 Manufacturer: Toyota/Lexus

Part Number	OE Number	Description	Years	Ohms
52-0378	35230-52011	S2 Shift 2 Solenoid	2002-2014	12
52-0385	35270-52011	SL Lock-Up Solenoid	2002-2014	12
52-0386	35240-52011	S1 Shift 1 Solenoid	2002-2014	12
52-0387	35290-52030	SLT EPC Solenoid (U340E)	2002-2014	5.1
52-0395	35290-52020	SLT, EPC Solenoid (U341E)	2002-2009	5.1

U150E/U151E
 Manufacturer: Toyota/Lexus

Part Number	OE Number	Description	Years	Ohms
52-0379	Various	SS3, SR Shift Solenoid Position 2	2002-2014	12
52-0380	35230-33020	Lock-Up DSL Solenoid	2002-2014	12
52-0381	35240-33030	SS3, S4 Shift 3 Solenoid Position 3	2002-2014	12
52-0414	35230-33010	EPC Solenoid	2002-2014	5.1
52-0415	35290-45010	SL2, SL3 Shift 2 Linear Solenoid (2 in Unit)	2002-2014	5.1
52-0416	35220-45010	SL1 Shift 1 Linear Solenoid	2002-2014	5.1
52-9034	N/A	Solenoid Kit With 7 Solenoids	2004-2008	N/A

U150E/U151E/U250E
 Manufacturer: Toyota/Lexus

Part Number	OE Number	Description	Years	Ohms
52-0379	Various	SS3, SR Shift Solenoid Position 2	2002-2014	12
52-0380	35230-33020	Lock-Up DSL Solenoid	2002-2014	12
52-0381	35240-33030	SS3, S4 Shift 3 Solenoid Position 3	2002-2014	12
52-0414	35230-33010	EPC Solenoid	2002-2014	5.1
52-0415	35290-45010	SL2, SL3 Shift 2 Linear Solenoid (2 in Unit)	2002-2014	5.1
52-0416	35220-45010	SL1 Shift 1 Linear Solenoid	2002-2014	5.1
52-9034	N/A	Solenoid Kit With 7 Solenoids	2004-2008	N/A

U660E
 Manufacturer: Toyota/Lexus

Part Number	OE Number	Description	Years	Ohms
52-0569	35280-52040	SLU Linear Solenoid (Small Can)	2007-2014	5.5
52-0578	35240-73010	SL Shift Solenoid (Blue Connector. On/Off. Normally Closed)	2007-2014	12.4
52-0579	35210-73010	SL1 and SL3 Linear Solenoid (Large Can. Brown Connector. 2 in Unit)	2007-2014	5.5

Volkswagen

095/ 096/01M / 097/01N / 098/01P
 Manufacturer: Volkswagen/Audi

Part Number	OE Number	Description	Years	Ohms
350-0070	Various	Universal Wire Harness	1990-2011	N/A
50-1031	01M-927-321B	VSS Sensor With 12" harness and 3-Pin Connector	1995-2006	N/A
50-1032	095-927-321B	VSS Sensor With 2-Pin Half Round Connector	1995-2006	N/A
50-1033	095-927-321A/C	Input/Output Sensor With 2-Pin Rectangular Connector	1990-2003	N/A
52-0442	095-927-331	Shift Solenoid (5 or 6 in Unit)	1990-2011	58
52-0443	095-927-333	EPC Solenoid (1 or 2 in unit)	1990-2011	4.5

JF506E / 09A
 Manufacturer: Volkswagen/Jaguar/Land Rover/Audi

Part Number	OE Number	Description	Years	Ohms
350-0148	Various	10-Prong Internal Wire Harness. 9-Blade Connectors and Ground.	2000-2010	N/A
50-1037	31935-PW000	Speed sensor (Input, Output, Turbine) [3 per unit]	2000-2010	N/A
52-0418	31941-PR006	Shift Solenoid A	2000-2010	17
52-0424	31941-PR008	2-4 Brake Timing Solenoid	2000-2010	17
52-0425	31941-PR005	Shift C Solenoid	2000-2010	17
52-0426	31941-PR014	Reduction Timing Solenoid	2000-2010	17
52-0427	31941-PR007	Low Timing/Low Clutch Solenoid	2000-2010	17
52-0432	31941-PR000	Shift B Solenoid	2000-2010	16
52-0529	31941-PR015	EPC Pressure Control Solenoid	2000-2010	3.0
52-0530	31941-PR011	2-4 Brake Duty (Oil Pressure) Solenoid	2000-2010	2.9
52-0531	31941-PR010	TCC Solenoid	2000-2010	13
52-9043	N/A	Solenoid Set with Internal Wire Harness (10-Prong Connector)	2000-2010	N/A

01J CVT Multitronic 6 Step
 Manufacturer: Audi

Part Number	OE Number	Description	Years	Ohms
52-0528	N/A	CVT Pressure control solenoids, safety solenoid (3 in Unit)	2000-2013	5.1

01T / 0AN CVT Multitronic 7 Step and 0AW 8 Step Multitronic
 Manufacturer: Audi

Part Number	OE Number	Description	Years	Ohms
52-0546	N/A	Multitronic Pressure Control Solenoids, Safety Solenoid (3 in Unit)	2007-2014	4.7

50-1028



Green, 38 PSI

Stepped With Ledge	
Vehicle	Trans Code(s)
Accord 4 Cyl. (98-02)	BAXA / MAXA
Prelude (97-01)	M6HA
2.3CL (98-99)	B6VA

Stepped Without Ledge	
Vehicle	Trans Code(s)
Odyssey (1998)	MDWA
CR-V (02-04)	MCVA / MRVA
RSX (02-03)	MRMA

Replaces OE: 28600-P6H-003, 28600-PRP-004

50-1029



Black/Grey, 33 PSI

Stepped With Ledge	
Vehicle	Trans Code(s)
Accord All (98-02)	BAXA/MAXA/B7XA
Odyssey (99-04)	B7YA/B7TA/B7BA
Pilot (03-04)	BVGA/BYLA
3.0/3.2CL (97-03)	M7ZA/M7WA/B7WA
MDX (01-02)	BGHA/MGHA
3.2TL (99-03)	B7VA/M7WA/B7WA

Stepped Without Ledge			
Vehicle	Trans Code(s)	Vehicle	Trans Code(s)
Accord V-6 (03-07)	BAYA / MAYA	RDX (07-11)	BWEA
Accord Hyb. (05-07)	MURA	RL (05-11)	MJBA
Ridgeline (06-08)	BJFA / MJFA	3.2TL (04-08)	BDGA
Element (03-06)	BZKA / MZKA		
Pilot (05-08)	PVGA / PVLA		
MDX (03-11)	MDKA/BDKA/BYFA		

Replaces OE: 28600-P7Z-003, 28610-RAY-003, 28610-RAY-013

50-1030



Beige, 27 PSI

Stepped With Ledge	
Vehicle	Trans Code(s)
Odyssey (02-04)	BYBA
Pilot (03-04)	BVGA / BYLA
3.2CL (01-03)	BGFA / MGFA
MDX (01-02)	BGHA / MGHA
3.2TL (00-03)	M7WA / B7WA

Stepped Without Ledge			
Vehicle	Trans Code(s)	Vehicle	Trans Code(s)
Accord V-6 (03-07)	BAYA / MAYA	MDX (03-11)	MDKA / BDKA / BYFA
Accord Hyb. (05-07)	MURA	RDX (07-11)	BWEA
Pilot (05-08)	PVGA / PVLA	RL (05-11)	MJBA
Ridgeline (06-08)	BJFA / MJFA	3.2TL (04-08)	BDGA

Replaces OE: 28600-P7W-003, 28600-RAY-003

50-1059



Yellow/Orange, 29 PSI

All	
Vehicle	Trans Code(s)
Civic (06-11)	SPCA / MPCA
Fit (07-08)	SMMA

Replaces OE: 28600-RPC-003, 28600-RPC-013

50-1060



White/Beige, 26 PSI

All	
Vehicle	Trans Code(s)
Odyssey V6 (05-10)	BGRA/PGRA/P36A/B36A
Acura TL V6 (04-08)	BDGA

Replaces OE: 28600-RKE-004

50-1061












Green, 40 PSI

All			
Vehicle	Trans Code(s)	Vehicle	Trans Code(s)
Accord 2D (03-07)	MCLA / BCLA / BAYA / MAYA	TSX (04-07)	MCTA
Accord 4D (03-07)	MCLA / BCLA / BAYA / MAYA		
Element (03-06)	BZKA		
CR-V (02-06)	MKYA / GPLA		
RSX (02-06)	MRMA		

Replaces OE: 28600-RCL-004

Rostra Performance Class

SOLENOIDS

Honda / Acura		Quick Reference Guide									
PRESSURE SWITCH				Trans Codes	Rostra #	GFX #	Transtar #	WIT #	NATPRO #	Industry #	OE #
BEIGE, 27 PSI	*W/ LEDGE / STEP				50-1030	28655R	90411E	20411E	95878	98992C	28600-P7W-003
2ND & 3RD Bell Housing	Odyssey V-6 5AT	02-04	BYBA								Can be replaced by 28600-RKE-004 50-1060
	Pilot V-6 5AT	03-04	BVGA / BYLA								
	3.2CL V-6 5AT	01-03	BGFA / MGFA								
	MDX V-6 5AT	01-02	BGHA / MGHA								
	3.2TL V-6 5AT	00-03	M7WA / B7WA								
BEIGE, 27 PSI	*NO LEDGE / STEP				50-1030	28655R	30411F	20411E	95878A	98992D	28600-RAY-003
2ND & 3RD Bell Housing	Accord V-6 5AT	03-07	BAYA / MAYA								Can be replaced by 28600-RKE-004 50-1060
	Accord Hybrid 5AT	05-07	MURA								
	Pilot V-6 5AT	05-08	PVGA / PVLA								
	Ridgeline V-6 5AT	06-08	BJFA / MJFA								
	MDX V-6 5AT	03-09	MDKA / BDKA / BYFA								
	RDX V-6 5AT	07-11	BWEA								
	RL V-6 5AT	05-11	MJBA								
	3.2TL V-6 5AT	04-08	BDGA								
BLACK, 33 PSI	*W/ LEDGE / STEP				50-1029	28655AR	90411C	30411CA	95878AF	98992A	28610-RKE-004
2ND & 3RD Rear Cover	Accord All 4AT	98-02	BAXA / MAXA / B7XA					Can be	Replaced by	98992T	28600-P7Z-003
	Odyssey V-6 4AT	99-04	B7YA / B7TA / B7BA		28610-RAY-003						
	Pilot V-6 5AT	03-04	BVGA / BYLA		28610-RAY-013						
	3.0CL / 3.2CL V6 4AT	97-03	M7ZA / M7WA / B7WA		28600-PRH-013						
	MDX V-6 4AT	01-02	BGHA / MGHA		28610-PRH-003						
	3.2TL V-6 4/5AT	99-03	B7VA / M7WA / B7WA								
GRAY, 33 PSI	*NO LEDGE / STEP				50-1029	28655AR	30411D	20411D	91878HA	98992E	28600-P7Z-003
2ND & 3RD Bell Housing BAYA/MAYA Front of rear Cover BZKA/MZXA Bottom of Case Other Units	Accord V-6 5AT	03-07	BAYA / MAYA					Can be	Replaced by	98992T	28610-RAY-003
	Accord Hybrid 5AT	05-07	MURA		28610-RAY-013						
	Ridgeline V-6 5AT	06-08	BJFA / MJFA		28600-P7Z-013						
	Element L4 4AT	03-06	BZKA / MZKA								
	Pilot V-6 5AT	05-08	PVGA / PVLA								
	MDX V-6 5AT	03-11	MDKA / BDKA / BYFA								
	RDX L4 5AT	07-11	BWEA								
	RL V-6 5AT	05-11	MJBA								
	3.2TL V-6 5AT	04-08	BDGA								
GREEN, 38 PSI	*W/ LEDGE / STEP				50-1028	28655BR	80411A	30411C	91878J	98992	28600-P6H-003
2ND & 3RD Bell Housing	Accord L4 4AT	98-02	BAXA / MAXA								Can be replaced by 28600-RCL-004 50-1061
	Prelude L4 4AT	97-01	M6HA								
	2.3CL L4 4AT	98-99	B6VA								
GREEN, 38 PSI	*NO LEDGE / STEP				50-1028	28655BR	30411B	30411E	91878JA	98992B	28600-PRP-004
2ND & 3RD Bell Housing	Odyssey L4 4AT	1998	MDWA								Can be replaced by 28600-RCL-004 50-1061
	CR-V L4 4AT	02-04	MCVA / MRVA								
	RSX L4 5AT	02-03	MRMA								
YELLOW, 29 PSI					50-1059	28655CR	90411G	180412A	95878G-A	98992F	28600-RPC-013
2ND & 3RD front Top of Rear Cover	CIVIC L4 5AT	06-11	SPCA, MPCA						Replaces	Orange Conn. 98992G	28600-RPC-003
	FIT L4 5AT	07-08	SMMA		28600-RPC-004						
WHITE/BEIGE, 26 PSI					50-1060	28655ER	30411E	40411B	95878AE-A	98992S	28600-RKE-004
2ND & 3RD Bottom of Case	Odyssey V-6 5AT	05-10	BGRA, PGRA, P36A, B36A								28600-P7W-003
	Acura TL V-6 5AT	04-08	BDGA		28600-RAY-003						
				50-1060 can replace 50-1030							
GREEN, 40 PSI					50-1061	28655FR	30411B	160411A	95878B-A	98992K	28600-RCL-004
2ND & 3RD Bottom of Case	Accord 2D 5AT	03-07	MCLA / BCLA / BAYA/MAYA						Replaces	Blue Conn.	28600-RCL-013
	Accord 4D 5AT	03-07	MCLA / BCLA / BAYA/MAYA		28600-P6H-003						
	Element L4 4AT	03-06	BZKA		28600-PRP-004						
	CR-V L4 4AT	03-04	MDLA / MCVA								
	CR-V L4 4AT	05-06	MKZA / GPPA								
	CR-V L4 4AT	05-06	MKYA / GPLA								
	RSX L4 5AT	02-06	MRMA								
	TSX L4 5AT	04-08	MCTA								

Honda / Acura Quick Reference Guide											
Trans Codes	Rostra #	GFX #	Transtar #	WIT #	NATPRO #	Industry #	OE #				
WHITE 24-30 PSI											
SMALL CONNECTOR 2ND & 4TH 2 per UNIT TOP of CASE 5AT	Acura RDX L4 5AT 10-13 Acura TL L4 5AT 07-11 Acura TSX V-6 5AT 10-14 Accord L4 CVT 12-16 Accord V-6 5AT 08-14 Crosstour V-6 5AT 10-12 Odyssey V-6 5AT 08-13 Pilot V-6 5AT 09-15 Ridgeline V-6 5AT 09-14	BT3A BK3A,BK4A MM2A BC5A B97A B8TA,B8SA,P9ZA,P9YA P36A,PV1A PN4A,PN3A PSFA	50-1173	28655GR	80411D	40439BB	95878HB	98992P	Replaces Brown		28600-R36-004 28600-R97-003
BLACK 30-36 PSI											
SMALL CONNECTOR 2ND & 3RD & 4TH 3 per UNIT 6AT ON CASE 3RD 5AT 1 per UNIT SIDE of CASE	Acura RDX L4 5AT 10-13 Acura TL V-6 5AT 07-11 Acura TSX V-6 5AT 10-14 Accord V-6 5AT 08-14 Crosstour V-6 5AT 10-12 Odyssey V-6 5AT 08-13 Pilot V-6 5AT 09-15 Ridgeline V-6 5AT 09-14 Acura MDX V-6 6AT 10-16 Acura RDX V-6 6AT 12-16 Acura RL V-6 6AT 11-12 Acura RLX V-6 6AT 14-16 Acura TL V-6 6AT 12-16 Acura ZDX V-6 6AT 10-13 Accord V-6 6AT 13-16 Crosstour V-6 6AT 13-15 Odyssey V-6 6AT 11-16	BT3A BK3A,BK4A MM2A B97A B8TA,B8SA,P9ZA,P9YA P36A,PV1A PN4A,PN3A PSFA MT4A,PJ8A,PJ7A B8CA,B8BA MR9A M9RA MMGA,MMHA M7PA BB7A B70A,BY9A MV2A,BYKA,PYRA	50-1174	28655HR	50411B	290411B	95878HC	98992Q			28610-R36-004 28610-R97-013
GREEN 36-42 PSI											
SMALL CONNECTOR 3 per UNIT 6AT ON SOLENOID BODY 1 per UNIT 5AT LOWER BACK of CASE	Acura RDX L4 5AT 10-13 Acura TL V-6 5AT 07-11 Acura TSX V-6 5AT 10-14 Accord V-6 5AT 08-14 Crosstour V-6 5AT 10-12 Odyssey V-6 5AT 08-13 Pilot V-6 5AT 09-15 Ridgeline V-6 5AT 09-14 Acura MDX V-6 6AT 10-16 Acura RDX V-6 6AT 12-16 Acura RL V-6 6AT 11-12 Acura RLX V-6 6AT 14-16 Acura TL V-6 6AT 12-16 Acura ZDX V-6 6AT 10-13 Accord V-6 6AT 13-16 Crosstour V-6 6AT 13-15 Odyssey V-6 6AT 11-16	BT3A BK3A,BK4A MM2A B97A B8TA,B8SA,P9ZA,P9YA P36A,PV1A PN4A,PN3A PSFA MT4A,PJ8A,PJ7A B8CA,B8BA MR9A M9RA MMGA,MMHA M7PA BB7A B70A,BY9A MV2A,BYKA,PYRA	50-1175	28655IR	50411A	160411E	95878J	Replaces Blue Conn.		28600-R94-004 28600-R90-013 28600-R90-003	
GRAY 33-39 PSI											
SMALL CONNECTOR 1 per UNIT 5AT TOP of CASE 5AT	Acura ILX L4 5AT 12-14 Acura TSX L4 5AT 09-14 Accord L4 5AT 08-12 Crosstour L4 5AT 12-13 CR-V L4 5AT 12-14 Element L4 5AT 09-11	M9DA MM7A,M8SA M91A BJ1A B5RA,B5SA MZKA,MNZA	50-1176	28655JR	80411C	160412E	95878JA	98992M			28600-R90-004
BROWN 26-32 PSI											
SMALL CONNECTOR 2 per UNIT 5AT Front Top of Rear Cover	FIT L4 5AT 09-13	SP5A,MP5A,M5PA	50-1177	28655LR	30411G	180411C	95878GG	98992J			28600-RG5-004 28600-RG5-013 28600-RG5-003

Sample Shape of Connectors



Connector shape for
50-1030, 50-1029, 50-1028,
50-1059, 50-1060, and 50-1061



Connector shape for
50-1173, 50-1174, 50-1175,
50-1176, and 50-1177

Rostra TRANSMISSION Domestic Product

CHRYSLER	CHRYSLER	CHRYSLER	CHRYSLER	CHRYSLER	CHRYSLER	CHRYSLER	CHRYSLER	CHRYSLER	CHRYSLER	CHRYSLER	CHRYSLER	NEW CHRYSLER WIRE HARNESSES											
350-0059 OE: 4419478 A604/A606 Speed Sensor Repair Harness	350-0062 OE: 4419478 A500/A518 External Repair Harness (1993-on)	350-0068 OE: 4419476 A504 External Harness Repair Kit (Solenoid Pack)	350-0069 OE: 4419476 A606 External Harness Repair Kit (Solenoid Pack)	50-1012 OE: 58041403 A500/A518 Governor Pressure Sensor (1993-1999)	50-1013 OE: 4800878 A604/A606 Input Sensor	50-1014 OE: 4800879 A604/A606 Output Sensor	50-1017 OE: 56028196AD A500/A518 Governor Pressure Sensor (2000-on)	50-1020 OE: 56027562 4244RE Gov. Sensor 3-pin Round Connector (1993-1996)	50-1040 OE: 4799758 45RFE/45SRFE Line Pressure Transducer (1998-on)	350-0159 OE: 68020010AB / 8-98179-069-0 (2007-2016) Solenoid A Wire Harness - Linear Solenoids A & C Pressure Switches 4, 5, 7, 8, TTT Sensor (10-Pin Connector)	350-0160 OE: 68020011AB / 8-98179-070-0 (2007-2016) Solenoid B Wire Harness - Linear Solenoids B & D Shift Solenoids Pressure Switches 1, 2, 3, 6, (12-Pin Connector)	350-0161 OE: 68019703AB (2007-2016) Wire Harness Internal Pressure Switches #4 and #5											
50-1143 OE: 52854001AA 42RL6 OSS (2003-on)	50-1144 OE: 52854001AA 42RL6 OSS (2003-on)	50-1163 OE: 419476 Chrysler 42RL6 /41TE/3 Oil Pressure Switch (3 Pin Black Oval Connector) (2006-on)	50-1168 OE: 6801970AA / 8-98179-073-0 AS68RC/A465 N.O. Pressure Switch, 1/4" NPT, Closes at 45-50 PSI, 5 Per (2007-2014)	50-1169 OE: 6801970AA / 8-98179-073-0 AS68RC/A465 N.O. Pressure Switch, 1/4" NPT, Closes at 65-70 PSI, 3 Per (2007-2014)	4659492AC A606, 42LE NSS, 8-pin (1993-1998)	52-0263 OE: 4377005 / 4799554AA A404 TCC	52-0264 OE: 44331954 A500 Overdrive/TCC Dual	52-0265 OE: 45311253 A518 Overdrive	52-0266 OE: 52118652 A500, A518, 42RE, 44RE, 48RE Dual Solenoid (1993-1999)	350-0162 OE: 68020011AB / 8-98179-070-0 (2007-2016) Solenoid B Wire Harness - Linear Solenoids B & D Shift Solenoids Pressure Switches 1, 2, 3, 6, (12-Pin Connector)	350-0161 OE: 68019703AB (2007-2016) Wire Harness Internal Pressure Switches #4 and #5	350-0161 OE: 68019703AB (2007-2016) Wire Harness Internal Pressure Switches #4 and #5											
52-0275 OE: 4617210 A500/518 Governor Pressure Solenoid (2000-on)	52-0347 OE: 52118500AB A500, A518, 44RE, 46RE, 48RE Dual Solenoid (2000-on)	52-0408 OE: 140-277-0435 WSA590330 (722.6 PWM Lock-up Solenoid (2004-2009)	52-0507 OE: 52118595 T6/F78 TCC Lock-Up Solenoid One Wire Type with Ground (1997-1998)	52-0508 OE: 4348945 TF6/F78 TCC Lock-Up Solenoid One Wire Type with Ground (1997-1998)	52-0593 OE: 68179702AA/8-98179-071-0 AS68RC/A465 Shift Solenoid-On/Off Shift 1, 2, 3, 4 (4 Pin) 12.5 ohm (2007-2014)	350-0055 OE: E7S2-7E499-A A4LD Case Connector (3 prong)	350-0060 OE: F8Z-7G276-BA 4R70W Internal Hard Wire Track (1999-on)	350-0064 OE: F2PZ-14A464G Univ. External Repair Harness - All Versions of 4R70W and AXOD	350-0066 OE: 3U2Z-14S411-VNA E40D External Repair Harness (1989-1994)	350-0067 OE: 3U2Z-14S411-VCA E40D/4R100 External Repair Harness (1995-on)	350-0091 OE: F2PZ-14A464A ALL/4R/AS/AODE/AXODE/AXAS External Repair Speed Sensor (1991-2003)	350-0095 OE: F2VY-7G276-A AODE/4R70W Internal Wire Harness Soft Wire Type (1992-1997)	50-1019 OE: XW4Z-7E440-AA 4R555N Fluid Pressure Switch (1999-2002)	50-1039 OE: 3L3Z-7M101-AA 4R70/4R75-E Center Case Sensor, Turbine Speed (2004-on)	50-1062 OE: F5T7-7A247-AA E40D MLPS (1998-1998)	50-1137 OE: F85Z-2L373-AB RWD Differential - Mounted Speed Sensor (1998-on)	50-1138 OE: F7RZ-7H103-BA 5R55E Output Speed Sensor (1997-on)	50-1139 OE: F5T2-7M101-A 5R55E Input Center/Turbine Sensor (1995-on)	50-1140 OE: XW4Z-7H103-AA 5R555W Input/Turbine Sensor (1999-on)	50-1141 OE: XW4Z-7M183-AA 5R55E Input Case Sensor (1997-on)	50-1142 OE: 3C3Z-7H141-AA 5R110W TFT Sensor	50-1166 OE: 24298526L8Z-7H103AA Ford F635E (2007-On) (VSS)	52-0212 OE: F5AZ-7G484AA AODE On/Off Shift
52-0213 OE: F1DZ-7G484-AA AXODE On/Off Shift	52-0215 OE: F1DZ-7G136A AXOD/AXODE On/Off Lock-up	52-0218 OE: F3DZ-7G136A AXODE Lock-Up / MCCC - 1.3 Ohm	52-0229 OE: F5AZ-7G136A AODE MCCC 15 Ohm (1998-1998)	52-0254 OE: F7OZ-7G136-AA AXODE MCCC 14.5 Ohm White Connector (1997-on)	52-0368 OE: F3DZ-7G136-AA AODE MCCC 1.6 Ohm White Connector (1997-on)	52-0396 OE: XS4Z-7H148-AA Ford/Mazda 4F27E On/Off Shift Solenoid (2000-on)	52-0436 OE: 6L3Z-7G484-A 4R70W/AODE, 4R75W/E Dual Shift (1999-on)	52-0436 OE: F77Z-7G484-AB Ford 4R/5R Shift Solenoid (1995-on)	52-0437 OE: F77Z-7G136-AA 4R/5R PWM TCC w/ Inductive Signal (1997-on)	52-0438 OE: XL2Z-7G383-AA 5R55E EPC with Inductive Signal (1997-on)	52-0480 OE: 0593-640076 BTR 93/97LE on/off shift Solenoid, 6 per (1989-2000)												
52-0484 OE: 9L3Z-7G484-A 4R75W/E Dual Shift (2009-on)	52-0510 OE: F2VY-7G136-A AODE TCC (PWM) Solenoid (1992-1994)	52-0511 OE: F6AZ-7G383-AA AODE/4R70W EPC Soft Wire Type (1992-1997)	52-0512 OE: F8AZ-7G136-AA AODE/4R70W EPC (PWM) Solenoid (1998-2008)	52-0513 OE: F8AZ-7G383-AA 4R70W EPC Hard Wire Type (Can Replace with 50106) (1998-2004)	52-0514 OE: XL3Z-7G383-AB 4R70W EPC Hard Wire Type (2005-2008)	52-0515 OE: 5C2Z-7G383-AB 4R75W EPC Hard Wire Type (2005-2008)	52-0516 OE: F6RZ-7G391-A CD4E Solenoid Pack (1994-2007)	52-0551 OE: XS4Z-7G484-AA 4R75E Shift O/D/E PWM (2002-2014), FMS 5-Speed SBC/4-Speed SBC/2-Speed SBC (2000-2014)	52-9005 A4LD Solenoid Master Kit Shift and Lock-up with Case Connector	350-0014 4L60E External Repair Harness (1993-on)	350-0020 4L60E Internal Wire Harness with Lock-up Solenoid (1993-2002)												
350-0025 OE: 12143296 4L60E Internal Wire Har. w/anti-bleed Lock-Up Solenoid (1993-2002)	350-0032 OE: 24200161 4L60E Internal Wire Harness (1991-2003)	350-0033 OE: 12154288 4L60E External Repair Harness (1991-1991)	350-0036 OE: 12143000 4T60E Internal Wire Harness (1974-on)	350-0038 4T60E Universal External Repair Harness (1991-on)	350-0039 OE: 10478100 TH700/4 Internal Wire Harness with Lock-up Solenoid	350-0040 OE: 12082980 4T60E Internal Wire Harness (1991-93) TCC PWM	350-0041 OE: 12082981 4T60E Internal Wire Harness (1991-1993) non-PWM	350-0053 OE: 8689901 TH125 Internal Wire Harness with Lock-up Solenoid	350-0056 OE: 12101899 2-pin VSS External Repair Harness	350-0061 OE: 15320476 4L60E Internal Wire Harness with Anti-bleed Lock-Up Solenoid (2003-2004)	350-0063 Diagnostic and Repair Harness with Terminals												
350-0071 OE: 24239 4L60E Internal Harness (2004-on)	350-0072 OE: 29541371 Allison LCT 1000 (1999-2003) 6 Sol. Internal Harness, Generation 2	350-0075 OE: 24229643 4T65E Universal Internal Wire Harness (1997-on)	350-0077 OE: 15305920 PRNLD (NSS) Repair Harness Kit	350-0078 OE: 24234121 4L65/70/75E Internal Har. (w/ Lock-Up Solenoid)	350-0079 OE: 21024415 GM/Saturn TAAT External Repair Harness (1995-on)	350-0083 Universal External Repair/Test Harness (20 Pins - White Wires)	350-0086 OE: 29539792 Allison LCT 1000 6 sol. Generation 3, (2006-2009)	350-0087 OE: 86893336 Allison LCT 1000 7 sol. Generation 4, GM Truck (2006-2009)	350-0088 OE: 29543334 Allison LCT 1000 7 sol. Generation 4, Off-Road (2006-2009)	350-0096 4L60/65/70E (2004-2008) & 4L80/85E (2001-2009) Repair Harness MLPS Switch, 11-pin	350-0152 4L65/70E 17 Pin Connector Internal Mode Switch Connector (2009-2012)												
350-9000 OE: 24200161 4L60E Internal and External Harness Kit	50-1000 OE: 24200695 4L80E Pressure Switch Manifold	50-1001 OE: 24200770 4T80E Pressure Switch Manifold	50-1002 OE: 24219581 4L60E Pressure Switch Manifold	50-1003 OE: 24200495 4T40E Pressure Switch Manifold	50-1004 OE: 24203699 4T65E Pressure Switch Manifold	50-1006 OE: 8673299 4L60 VSS (1983-1992)	50-1007 OE: 24203876 4L60E Input Sensor (1991-on)	50-1008 OE: 24204319 4T80E Output Speed Sensor (1993-on) (No Harness)	50-1009 OE: 24207491 4T80E Input Speed Sensor (1996-on) (9.5" Harness)	50-1010 OE: 24207507 4T40E VSS (1986-on)	50-1016 OE: 24232616 4T80E VSS (1993-1998) (14-inch Harness)												
50-1018 OE: 24216426 4T65-E Pressure Switch Manifold 1 prong (2003-on)	50-1034 OE: 29642886 / 29646992 Allison LCT 1000/2000 4T40/E Pressure Series Pressure Switch Manifold, 3 Switch Type (2004-On)	50-1035 OE: 24217544 4T40/E Pressure Series Pressure Switch Manifold, 3 Switch Type (2004-up)	50-1036 OE: 24228955 / 10456509 4T65E Input (TSS) Sensor, Exposed Metal Pickup (1997-On)	50-1054 OE: 24221125 4L60/85/70E (2004-2008) & 4L80/85E (2001-2009) MLPS Switch, 11-pin (2003-2006)	50-1055 OE: 29541852 Allison LCT 1000/2000 MLPS Switch (2003-2006)	50-1136 OE: 24232088/10456568 4T65E VSS OE (Long Connector) (1999-on)	50-1145 OE: 24210702 Volvo with GM 4T65E Output VSS (1998-on)	50-1146 OE: 24211397 Volvo with GM 4T85E Input VSS (1999-on)	50-1147 OE: 29536408 Allison 1000/2000 Series Input, Turbine & Output Sensor	50-1165 OE: 24219476 4T40/45E MLPS and NSS 11 Pin Connector (2004-2010)	52-0203 OE: 10478100 Various RWD On/Off Lock-up with Quick Link Connectors												
52-0210 OE: 8646419 Various FWD On/Off Lock-up with Quick Link Connectors	52-0227 OE: 91171049 MX17 Geo Metro On/Off Shift (1 solenoid with 1 bracket)	52-0233 OE: 96040316 TH180-C Lock-up	52-0239 OE: 8683535 4T60E PWM TCC (1991-1999)	52-0240 OE: 24227747, 24212690, 24214974, 86838187 4T65E LU (TCC) 1997-on, 4L60E/45E 3-2 Down Shift (PWM) 1993-1995	52-0241 OE: 24210864 4L60E PWM TCC (1991-on)	52-0248 OE: 96042006 4L60E PWM Band Control Solenoid (1990-1999)	52-0251 OE: 24212327 4L60E On/Off 3-2 Down Shift (1996-on)	52-0322 4L60E Anti-bleed Lock-up with Quick Link Connectors (1993-on)	52-0340 OE: 24220158 4L60E/4L80E Force Motor (1993-2002)	52-0348 OE: 10478131 4L60E On/Off Shift A and B (fits both locations)	52-0356 OE: 10478100 4L60E On/Off Shift A and B (fits both locations)												
52-0357 OE: 24207236 4T40E and 4T65E Shift A and B	52-0358 OE: 24202614 4T60E On/Off Shift A, Shift B and Lock-Up (3 per)	52-0367 OE: 10478146 4T40E/4T45E/4T65E, EPC (1997-2002)	52-0407 OE: 96022804 5L40E Shift 1, 2, 2, 3 & 4-5 (3 pin) Green Connector (1999-on)	52-0430 TH350 Universal Lock-Up Solenoid, High Performance (all years)	52-0445 OE: 96014182 4L30E Force Motor (1999-on)	52-0478 OE: 24230988, 24219308 4L80E Force Motor EPC (2004-on)	52-0517 OE: 21003344-3289 Saturn TAAT Shift Solenoids (White Top) 5 per Unit (1993-2002)	52-0518 OE: 24224905/24230632 4L60E/65/70E Variable Force Motor (EPC) Solenoid (2003-2012)	52-0522 OE: 96014593 4L30E -1, 2 and 3-4 Shift Solenoid (1999-2004)	52-0523 OE: 96014224 4L30E 2-3 Shift Solenoid (1990-2004)	52-0524 OE: 96014183 4L30E TCC Lock-Up Solenoid (1990-1999)												

