



3411 - PORSCHE CAYENNE 2011 - PRESENT

Installation Instructions

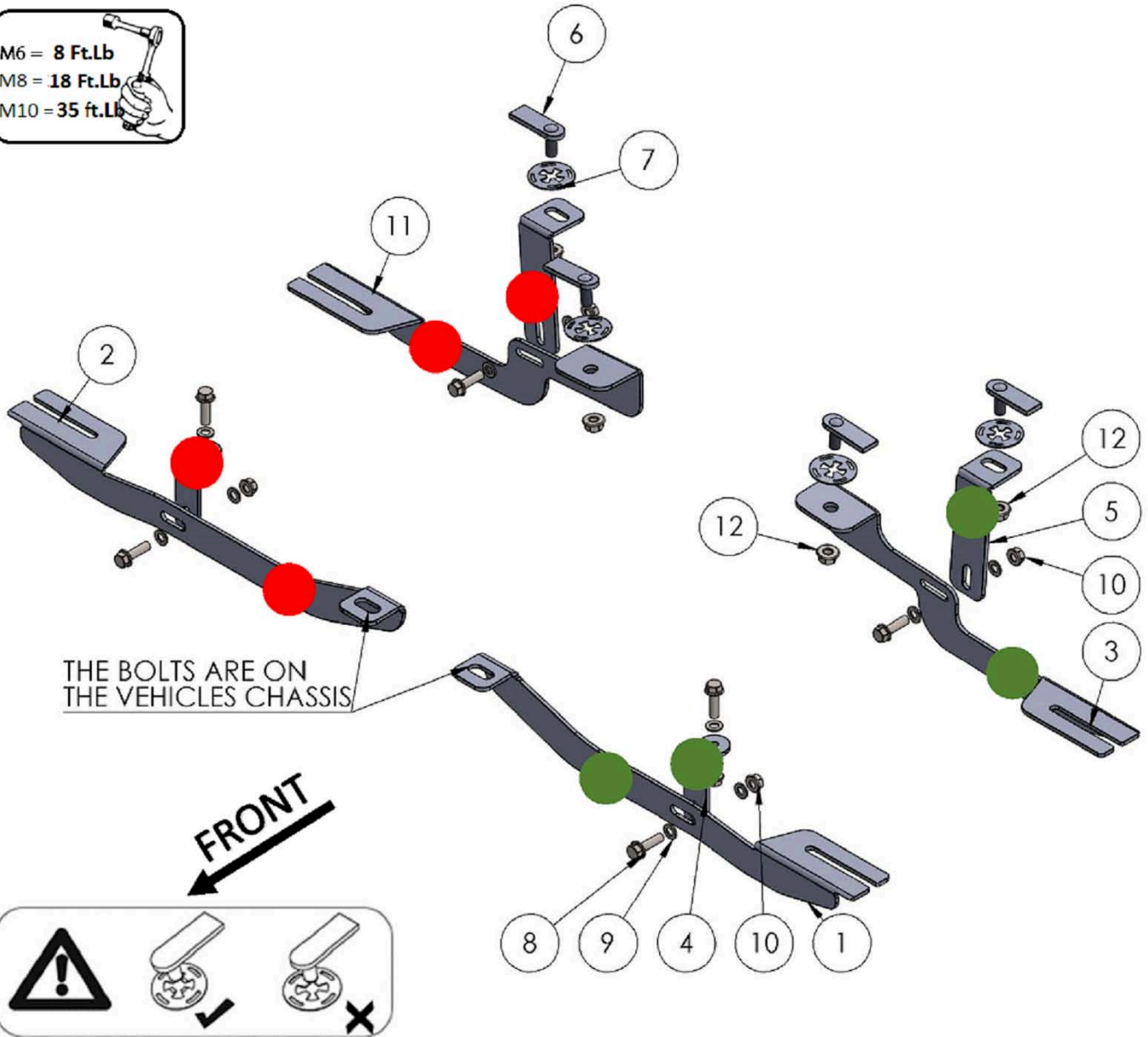
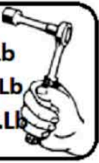


60 Minutes

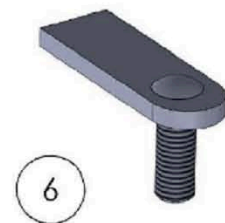
M6 = 8 Ft.Lb

M8 = 18 Ft.Lb

M10 = 35 Ft.Lb



ITEM	PART NUMBER	QTY
1	3411850F0 DRIVER	1
2	3411850F0 PASSENGER	1
3	3411850B0 DRIVER	1
4	3411850F1	2
5	3411850B1	2
6	HTC 230 - M10x25(5x20x60)	4
7	HTC 269 - CLIPS (M10)	4
8	DIN 6921 - FLANGE BOLT M8 x 30	6
9	DIN 125 - WASHER M8	10
10	DIN 6923 - FLANGE NUT M8	6
11	3411850B0 PASSENGER	1
12	DIN 6923 FLANGE NUT- M10	4

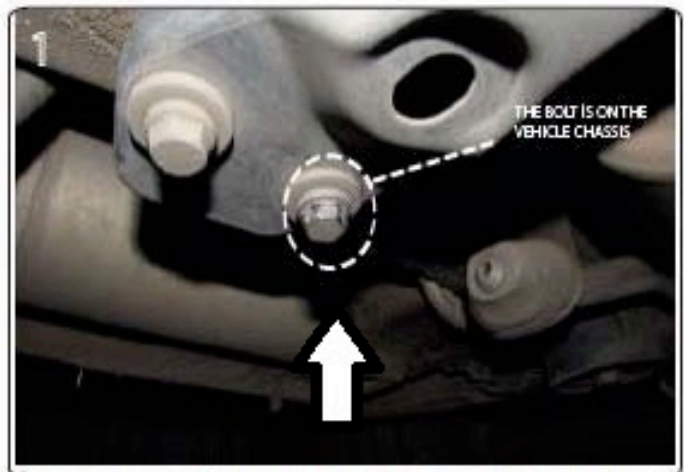


6

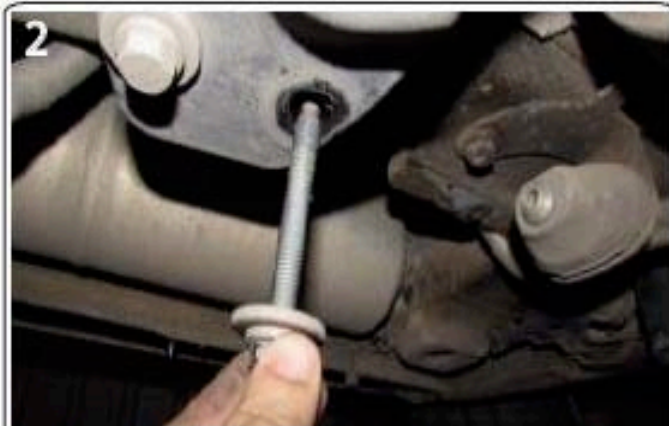


7

## Front Bracket Install



1) Remove factory crossmember bolt



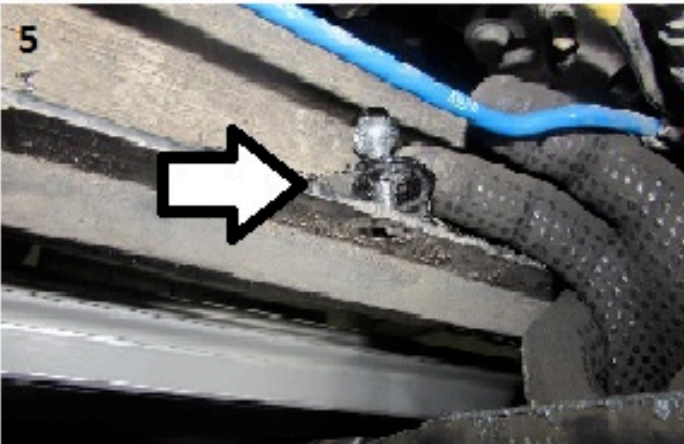
2) Do not dispose it will be reused



3) Front bracket location



4) Install using factory bolt



5) Use front bracket as guide to find extra support location. Insert M8 as shown above

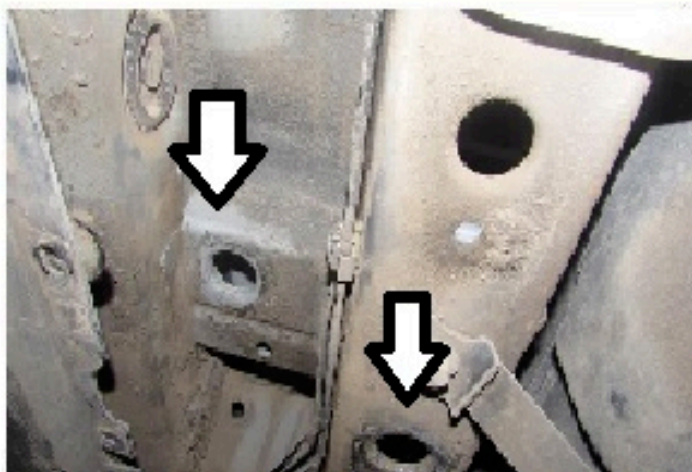
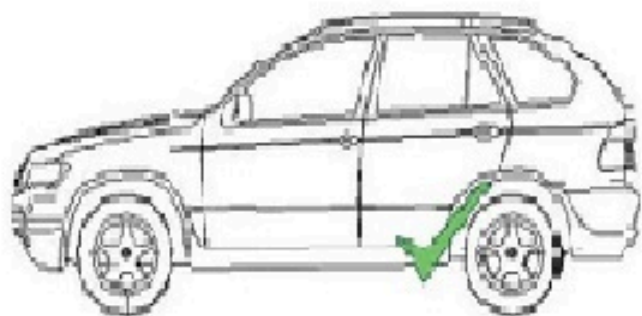


6) Install extra support bracket

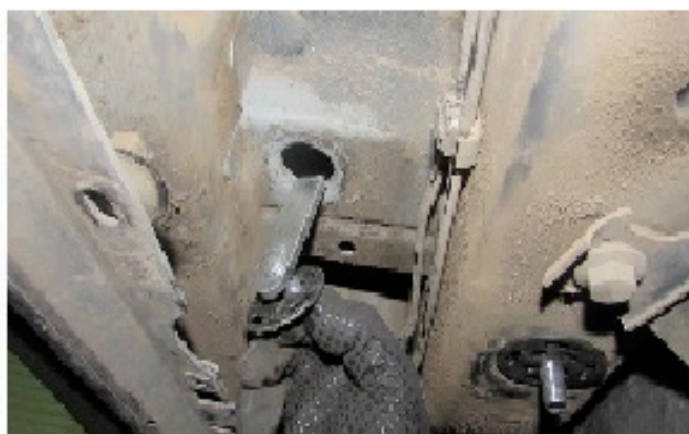


7) Attach brackets together hand tight

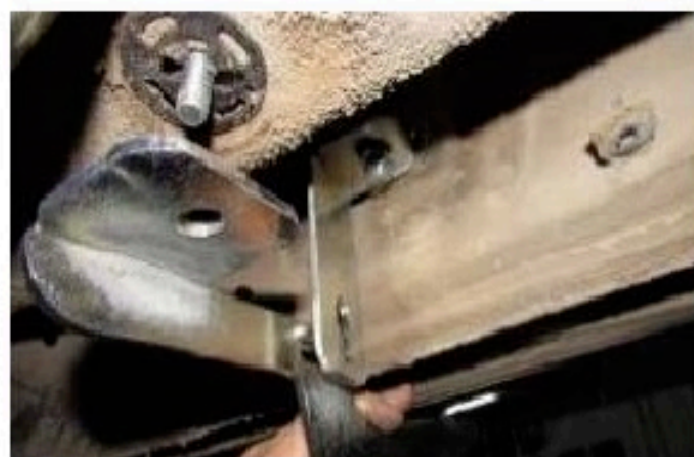
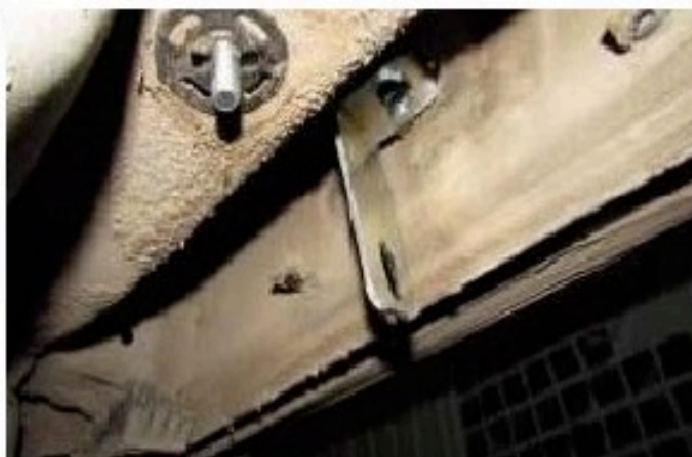
**Rear bracket install, this requires removal and trimming of plastic panel**



**1) Locate extra support mounting area**



**2) Insert supplied HTC 230**

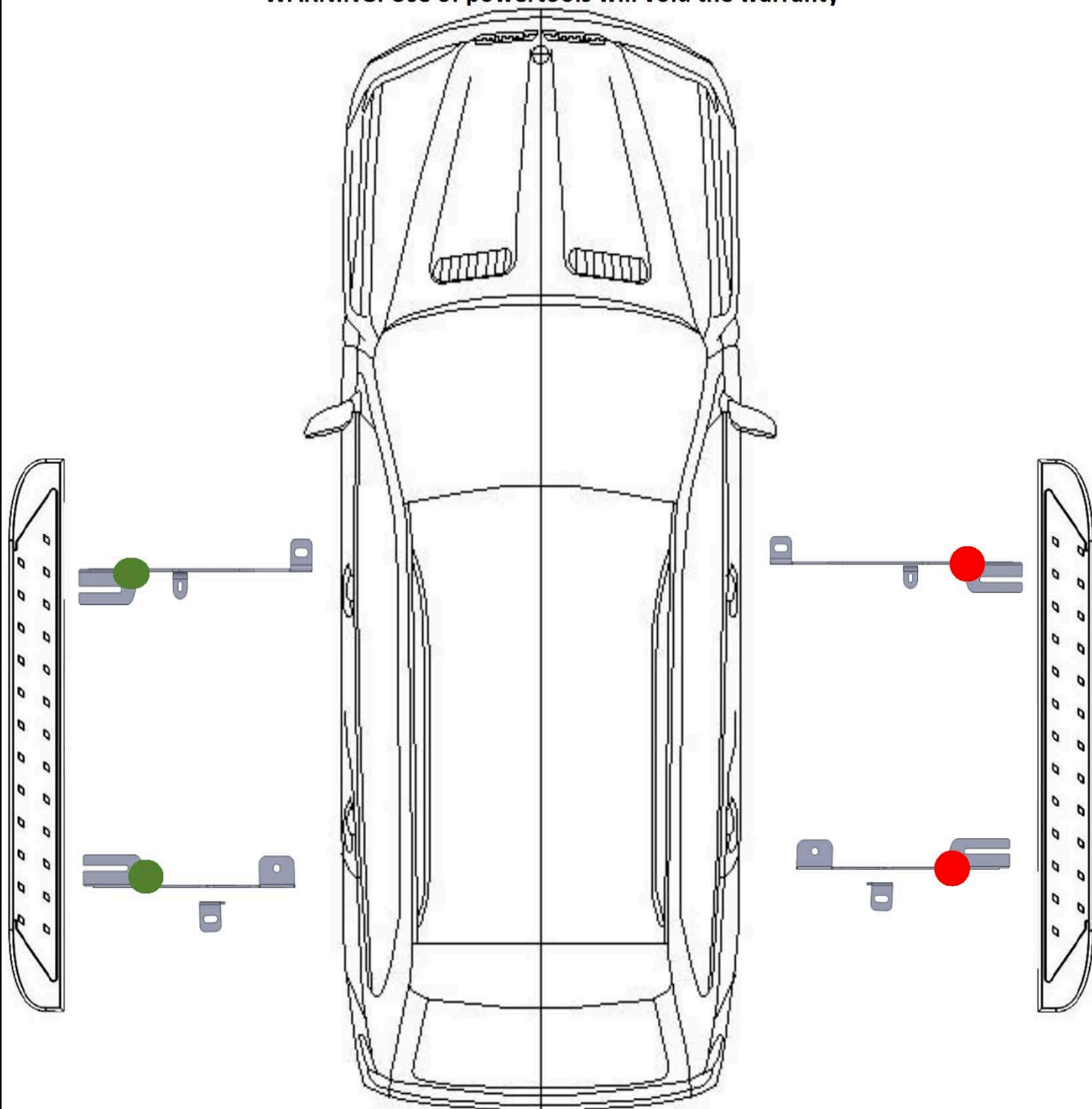


**3) After inserting supplied HTC 230 proceed to install extra support as shown above**



**4) Install rear main bracket and attach to extra support as shown above**

**WARNING: Use of powertools will void the warranty**



ATTENTION PLEASE! : DO NOT TIGHTEN ALL OF THE SCREWS UNTIL ALL OF THE PARTS ARE INSTALLED.

Keep your Romik accesories clean. To prevent corsion and to maintain your high quality finish, wax or polish regulary with quality stainless polish. Use a non abrasive type automotive wax. Any use of abrasive soaps, polishes or waxes can be detrimental to the finish.

On our website you'll find a wide variety of high-quality Running Boards & Step Bars from Romik.