



4016 - WV Touareg 2007 - 2016

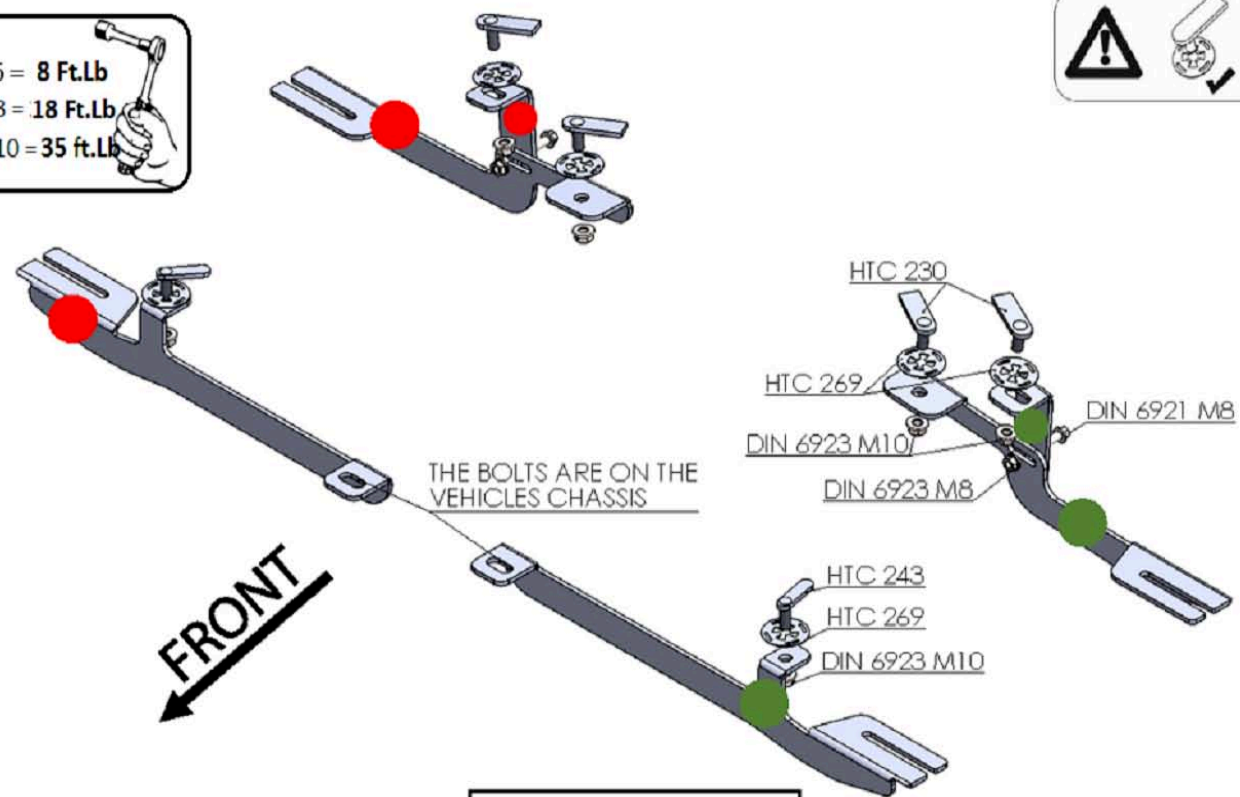
4016 - Porsche Cayanne 2007 - 2010

Installation Instructions



60 Minutes

M6 = 8 Ft.Lb  
M8 = 18 Ft.Lb  
M10 = 35 ft.Lb



### HARDWARE

4		HTC 230 - M10x25(4x20x60)
---	--	------------------------------

6		HTC 269 KLIPS (M10)
---	--	------------------------

6		FLANGE NUT M10 DIN 6923
---	--	----------------------------

2		HTC 243 - M10x25(5x13x50)
---	--	------------------------------

2		FLANGE BOLT DIN 6921 M8x30
---	--	-------------------------------

2		FLANGE NUT M8 DIN 6923
---	--	---------------------------

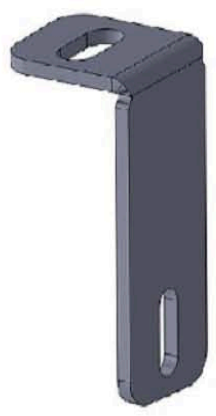
### BRACKETS



(x2)

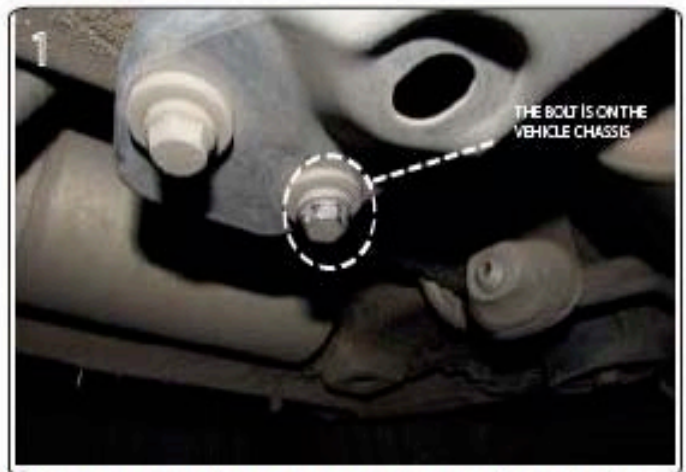


(x2)

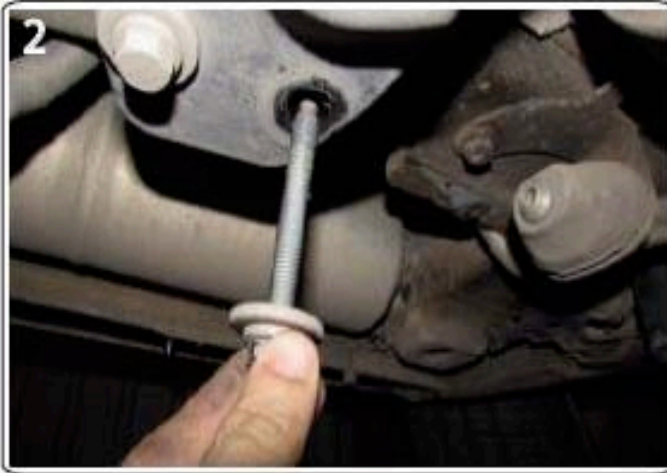


(x2)

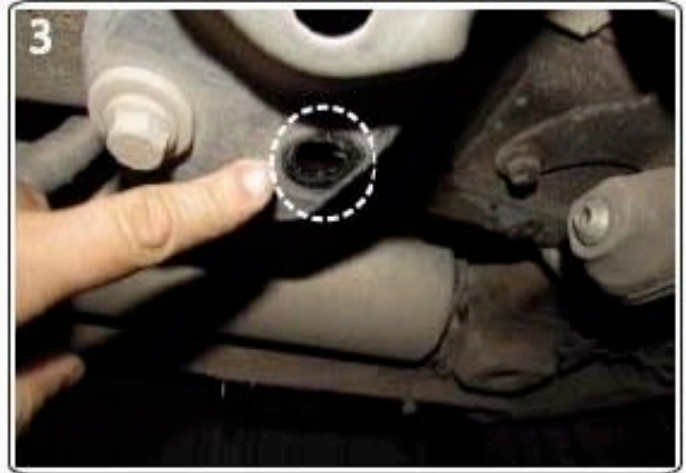
## Front Bracket Install



**1) Remove factory crossmember bolt**



**2) Do not dispose it will be reused**



**3) Front bracket location**



**4) Install using factory bolt**

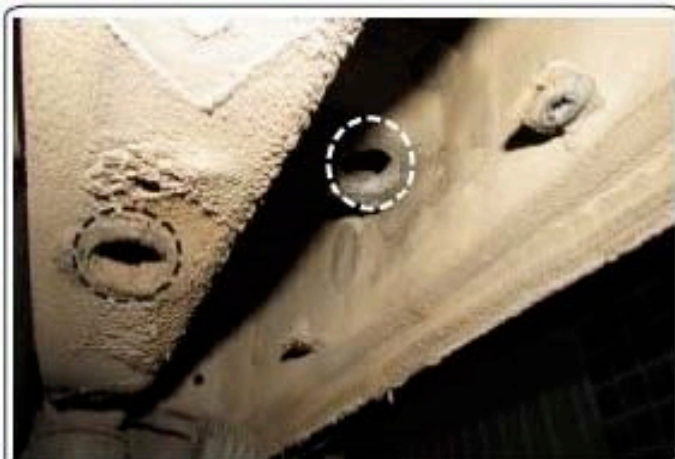


**5) Remove rubber plug and install HTC 243**





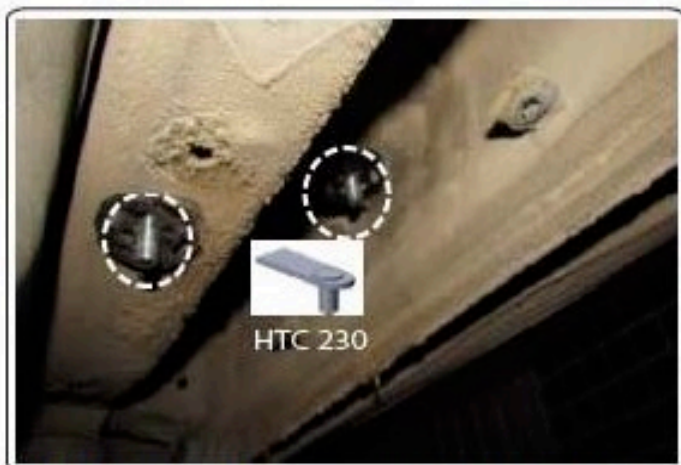
**Rear bracket install, this requires removal and trimming of plastic panel**



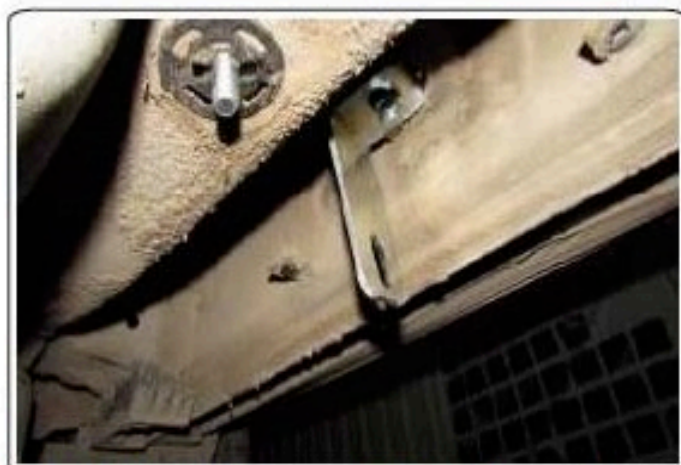
**1) Locate extra support mounting area**



**2) Insert supplied HTC 230**

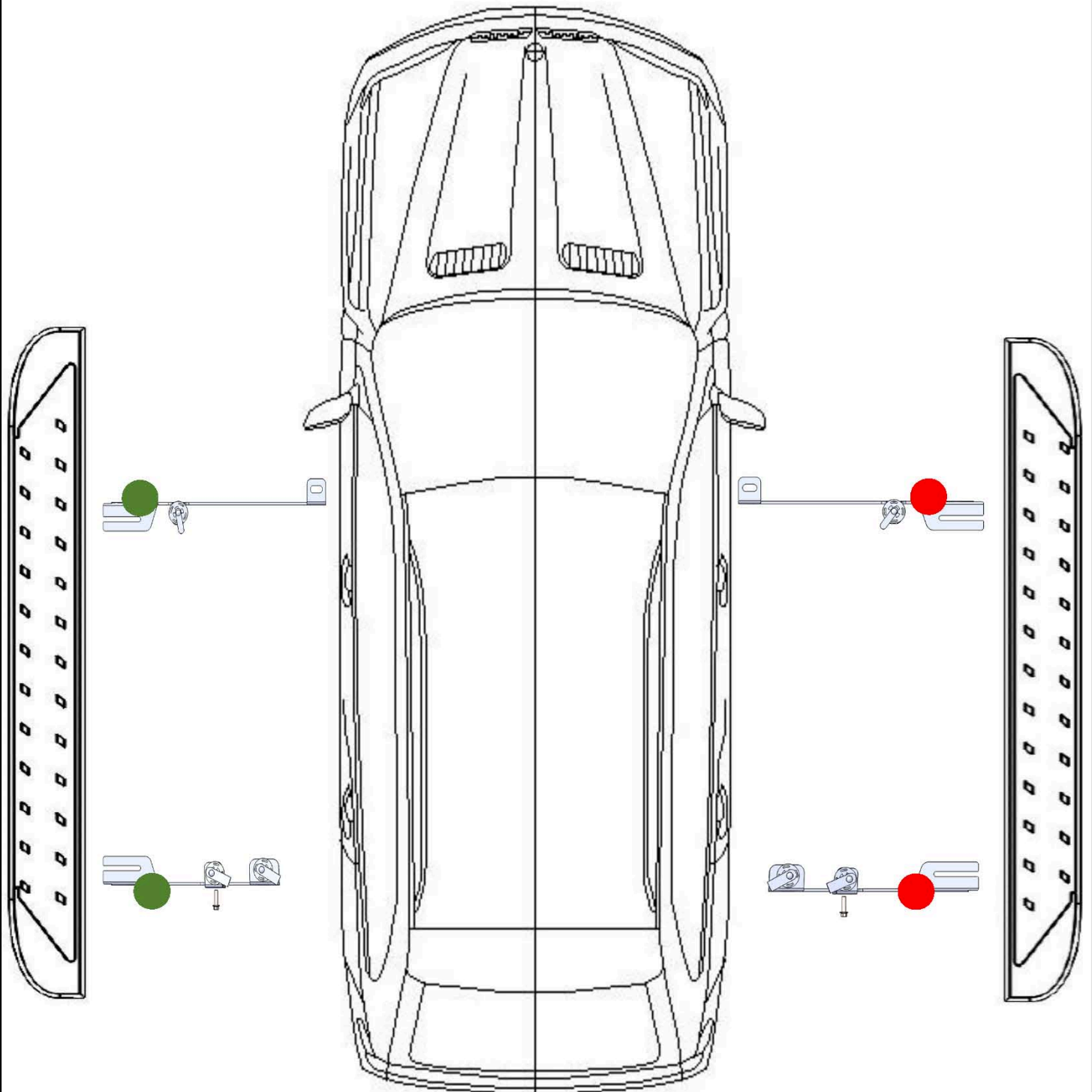


**3) After inserting supplied HTC 230 proceed to install extra support as shown above**



**4) Install rear main bracket and attach to extra support as shown above**

**WARNING: Use of powertools will void the warranty**



**ATTENTION PLEASE! : DO NOT TIGHTEN ALL OF THE SCREWS UNTIL ALL OF THE PARTS ARE INSTALLED.**

Keep your Romik accessories clean. To prevent corrosion and to maintain your high quality finish, wax or polish regularly with quality stainless polish. Use a non abrasive type automotive wax. Any use of abrasive soaps, polishes or waxes can be detrimental to the finish.

On our website you'll find a wide variety of high-quality Running Boards & Step Bars from Romik.