



ROMIK

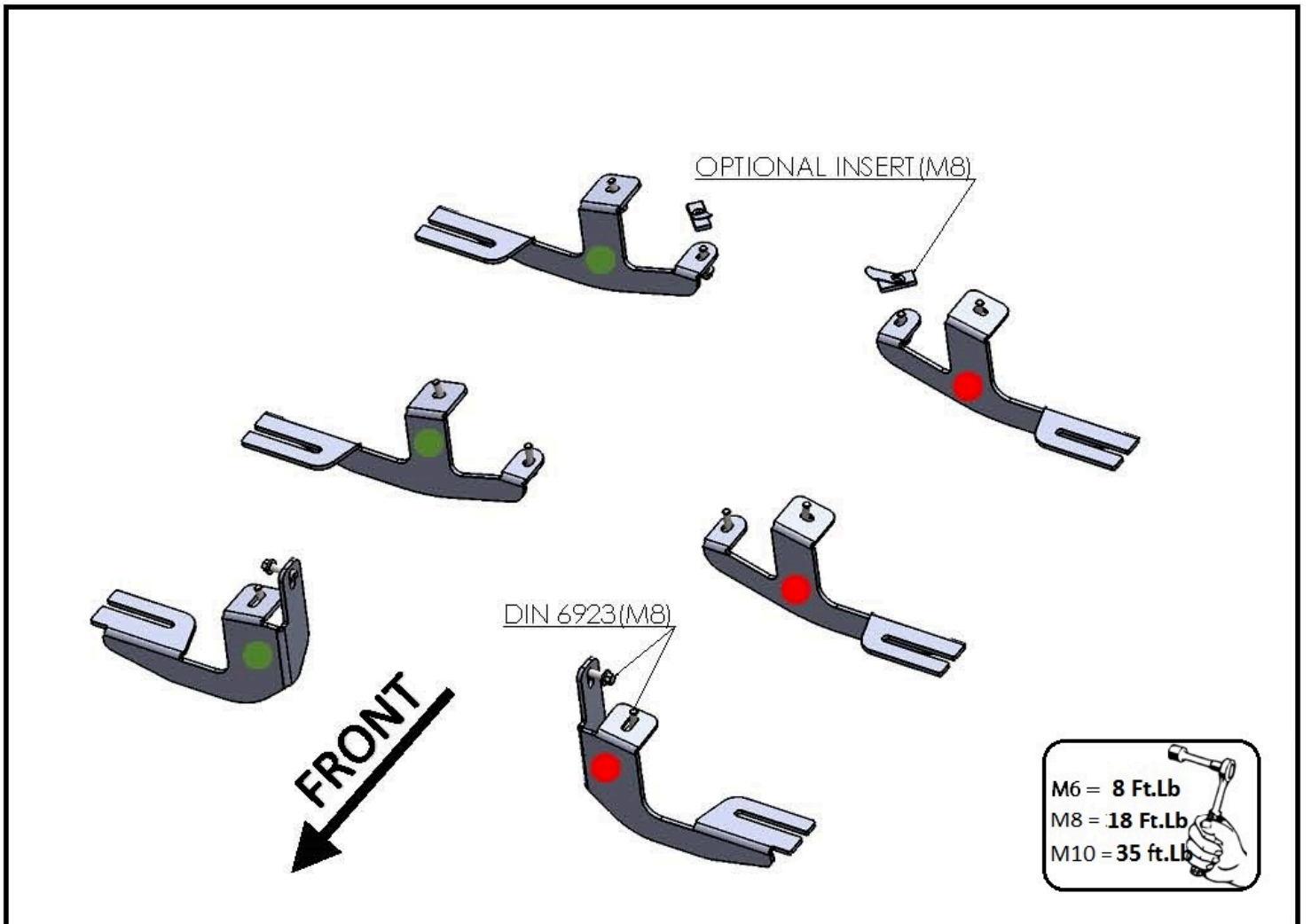
2215 - HONDA PILOT 2008 - 2015

6011 - ACURA MDX 2007 - 2013



Installation Instructions



60 Minutes

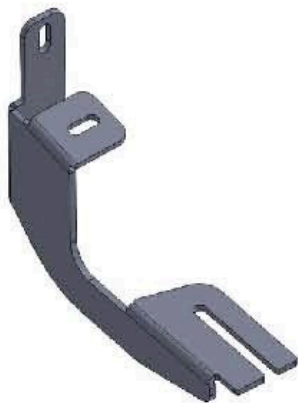


HARDWARE

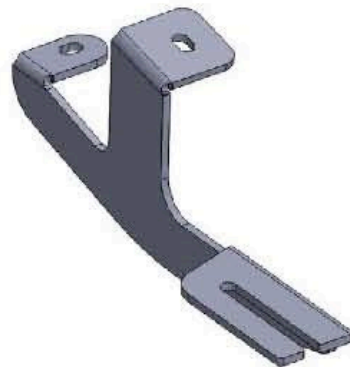
12		M8x30 FLANGE	2		M8 OPTIONAL
----	---	-----------------	---	---	----------------

WARNING: Use of powertools will void warranty

BRACKETS

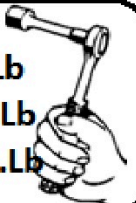
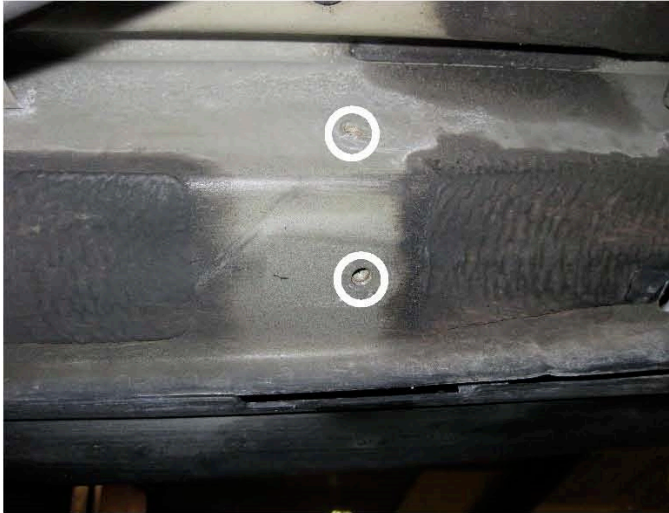


(x2)




(x4)

M6 = 8 Ft.Lb
M8 = 18 Ft.Lb
M10 = 35 ft.Lb

1) Locate front mounting area and install front bracket as shown above. Do not tighten yet.

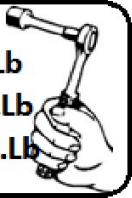
M6 = 8 Ft.Lb
M8 = 18 Ft.Lb
M10 = 35 Ft.Lb




2) Locate middle bracket mounting area and install middle bracket as shown above. Do not tighten yet.


WARNING: Use of power tools will void warranty

M6 = 8 Ft.Lb
 M8 = 18 Ft.Lb
 M10 = 35 Ft.Lb

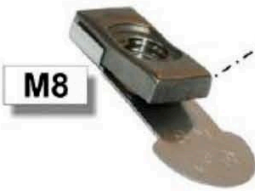



WARNING: Use of powertools will void warranty

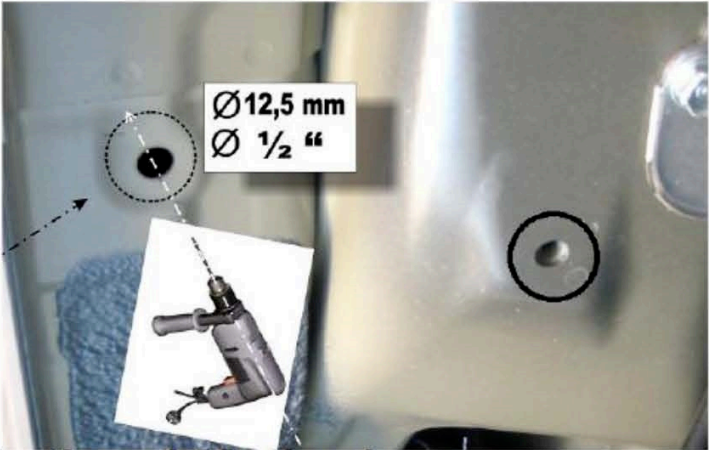




REAR



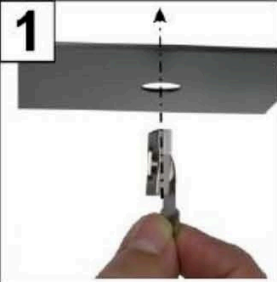
M8



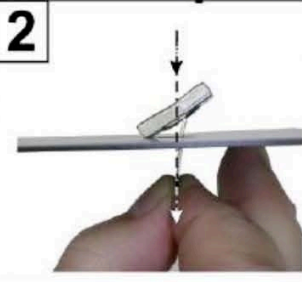
Ø12,5 mm
 Ø 1/2 "

Optional Method

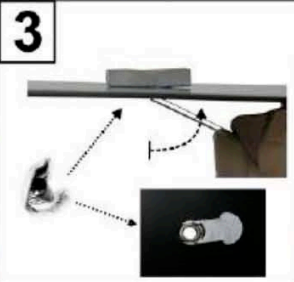
1



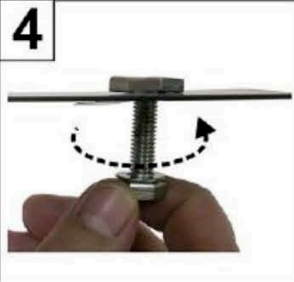
2



3


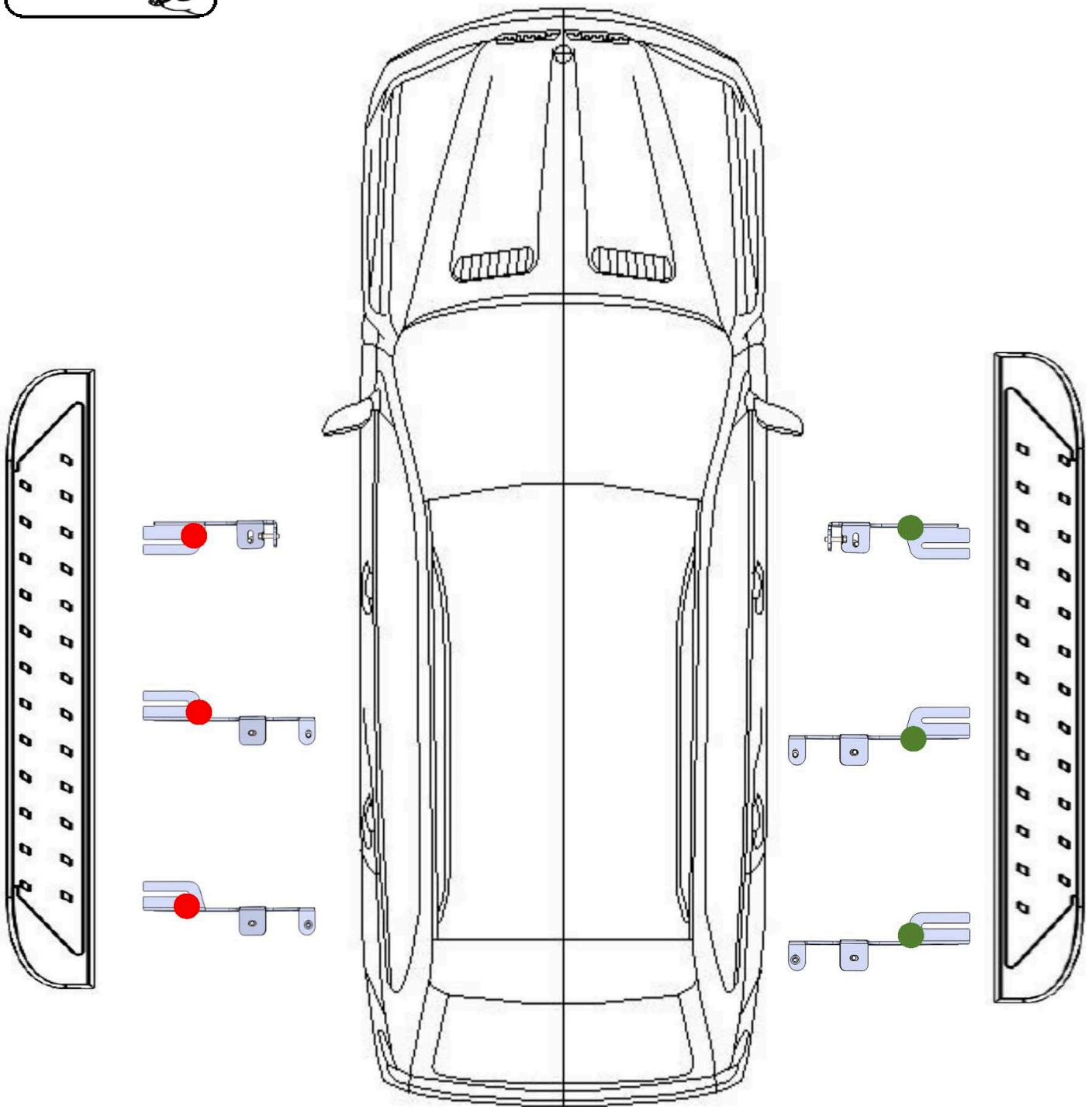


4



- 3) Locate rear bracket mounting area and install rear bracket as shown above. Note M8 insert must ne install in order to complete installation.
- 4) Once all brackets have been installed, proceed to install running boards and hand tight only
- 5) Proceed to tighten all mounting brackets at this point.
- 6) Proceed to tighten running boards. Do not use power tools as this will damage them.

M6 = 8 Ft.Lb
M8 = 18 Ft.Lb
M10 = 35 ft.Lb

ATTENTION PLEASE! : DO NOT TIGHTEN ALL OF THE SCREWS UNTIL ALL OF THE PARTS ARE INSTALLED.

Keep your Romik accesories clean. To prevent corrsion and to maintain your high quality finish, wax or polish regularly with quality stainless polish. Use a non abrasive type automotive wax. Any use of abrasive soaps, polishes or waxes can be detrimental to the finish.

On our website you'll find a wide variety of high-quality Running Boards & Step Bars from Romik.