



ROMIK

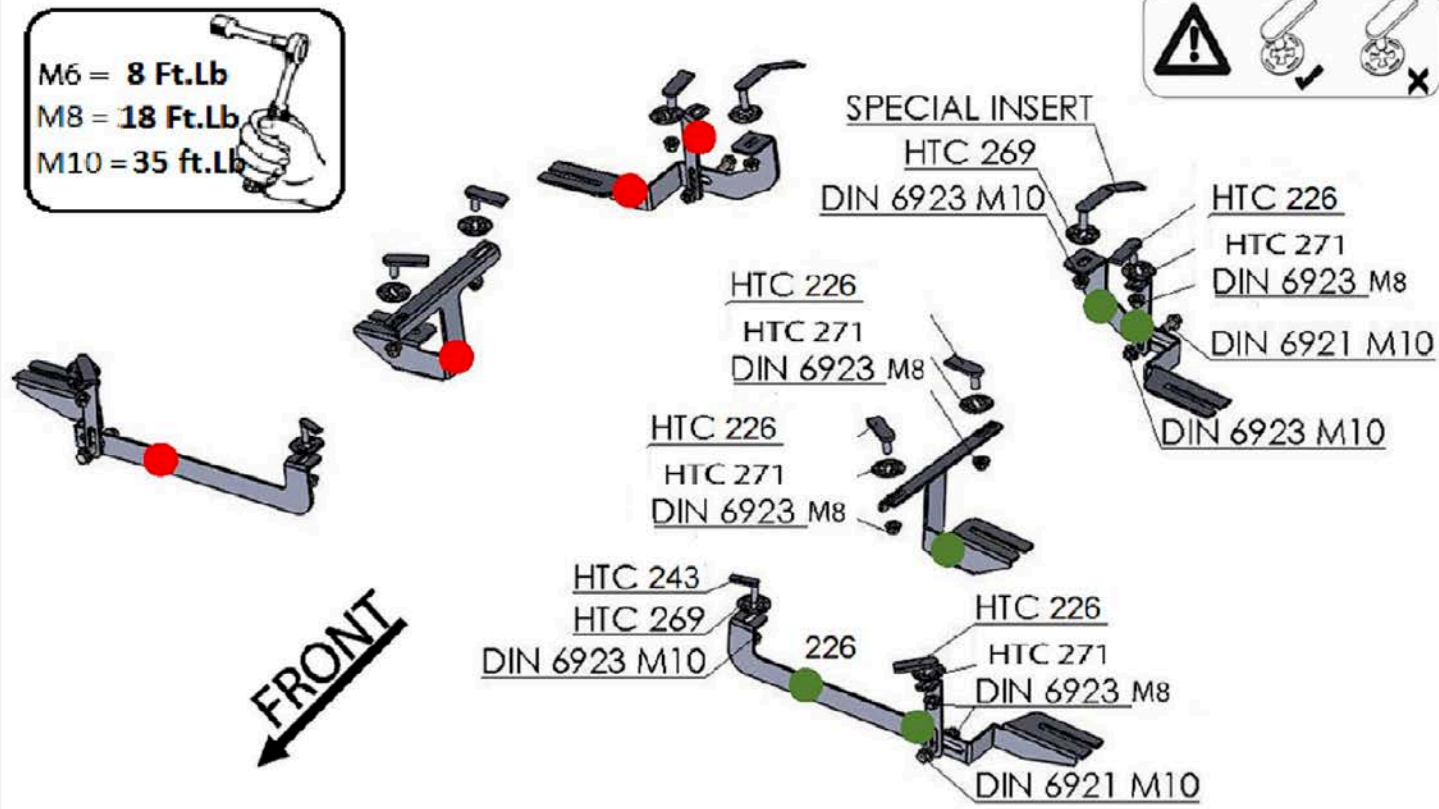
3220 - NISSAN MURANO 2015 - PRESENT

Installation Instructions



50 Min.

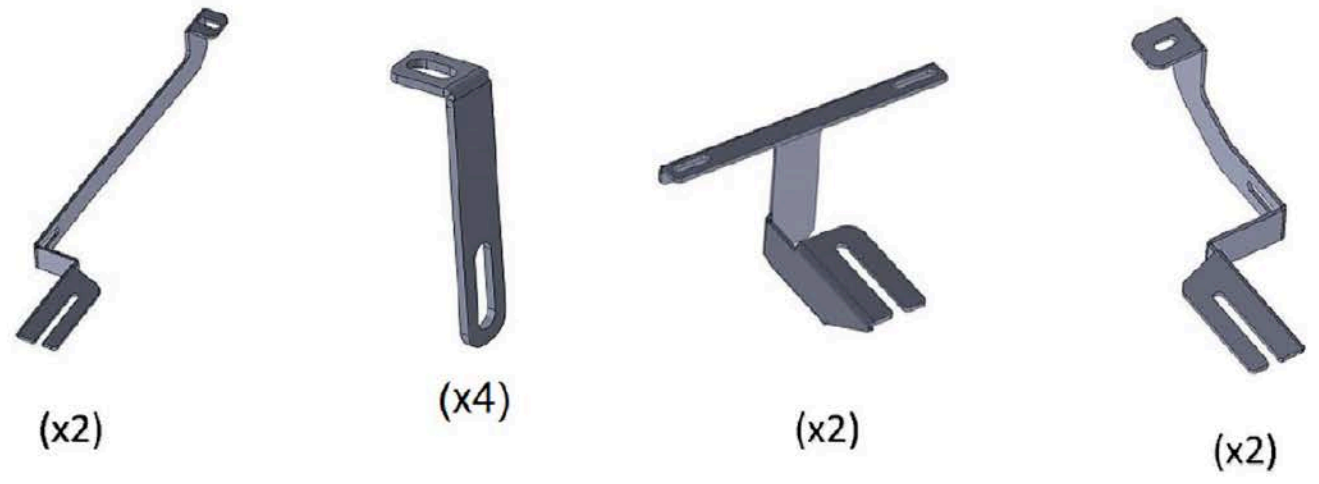
M6 = 8 Ft.Lb
M8 = 18 Ft.Lb
M10 = 35 ft.Lb

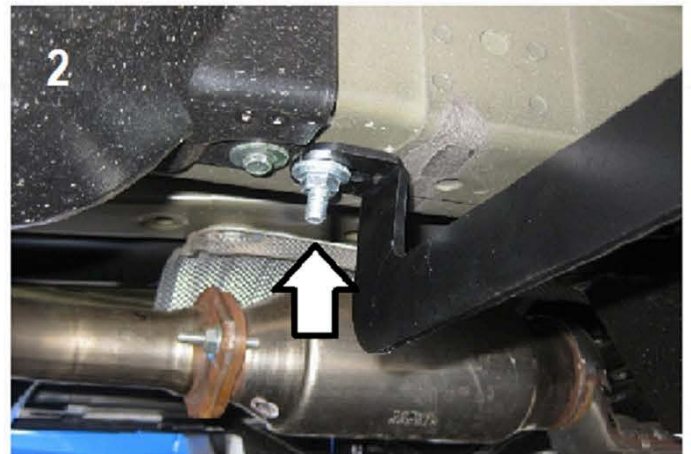


HARDWARE

8		HTC 226 M8X30 (4x10x37)	8		HTC 271 KLIPS (M8)	8		FLANGE NUT M10 DIN 6923
2		HTC 243 M10x30 (5x13x50)	4		HTC 269 KLIPS (M10)	14		FLANGE NUT M8 DIN 6923
4		FLANGE DIN 6921 M10x30	2		M10 SPECIAL INSERT (2x10x100)			

BRACKETS

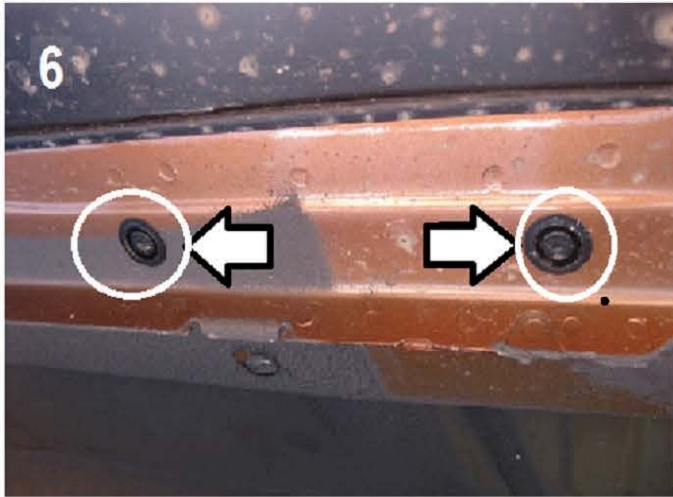




- 1) Locate front mounting point as shown on pic #1
- 2) Insert HTC 243 with supplied HTC 269
- 3) Attach main bracket as shown on pic #2
- 4) Locate extra support mounting area as shown on pic #3 remove plastic cover and discard. Install HTC 226
- 5) Install extra support bracket and attach to main bracket using supplied M10 bolt and nut. Make sure all hardware is hand tight only

Proceed to middle bracket

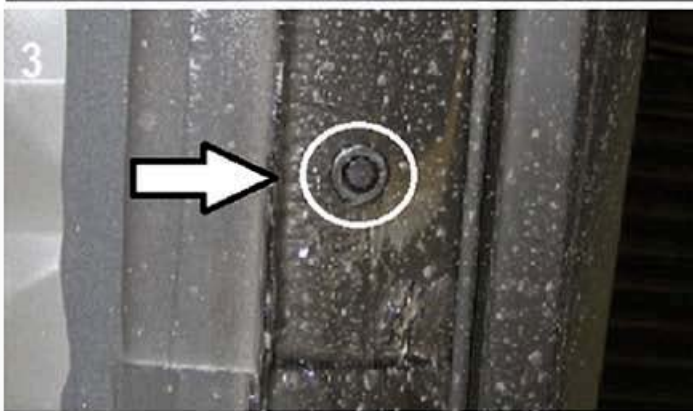
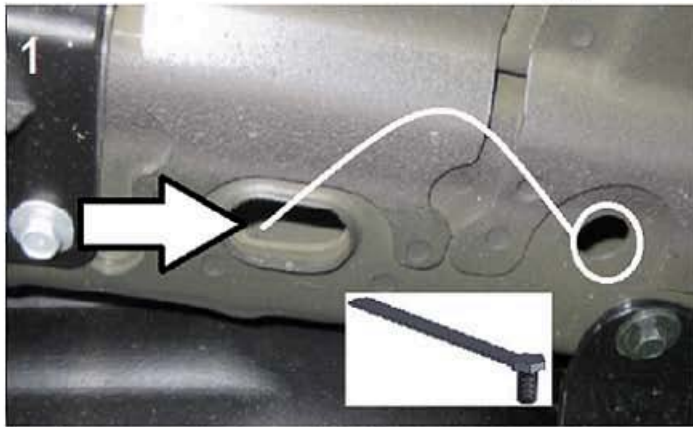
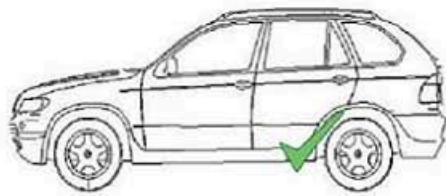
WARNING: Use of powertools will void the warranty



- 6) Locate middle mounting bracket area, remove the two rubber plugs as shown on pic #6
- 7) Install supplied inserts HTC 226
- 8) Install middle bracket as shown on pic #7 hand tight hardware

Proceed to rear bracket

WARNING: Use of powertools will void the warranty

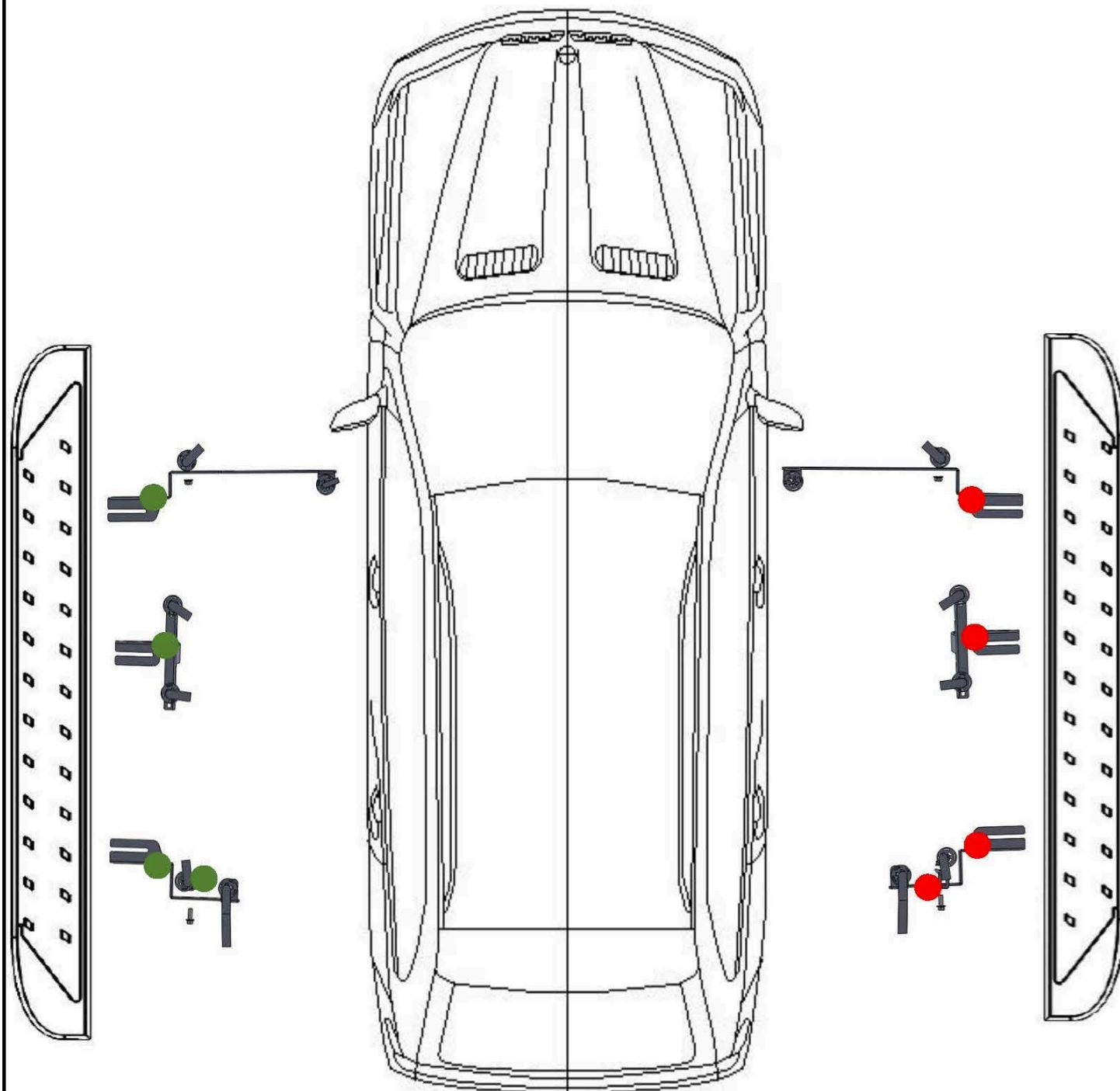


- 1) Locate rear bracket mounting area image #1 and insert special hardware #9 following the direction of the arrow
- 2) Attach rear main support bracket as shown on image #2 hand tight only
- 3) Locate extra support mounting area and remove rubber plug as shown on image #3
- 4) Install extra support with supplied hardware hand tight only
- 5) Attach extra support bracket to main bracket with supplied M10 hardware as shown in image #4
- 6) Loosen M8 hardware on back of steps and install on brackets hand tight only
- 7) Proceed to tighten bracket hardware M10 to 35 ft lbs and M8 to 18 ft lbs
- 8) Proceed to tighten M8 hardware on steps to 18 ft lbs DO NOT overtighten as it may damage steps
- 9) Repeat procedure on opposite side

WARNING: Use of powertools will void the warranty

On our website you'll find a wide variety of high-quality [Running Boards & Step Bars](#) from [Romik](#).

WARNING: Use of powertools will void the warranty



ATTENTION PLEASE! : DO NOT TIGHTEN ALL OF THE SCREWS UNTIL ALL OF THE PARTS ARE INSTALLED.

Keep your Romik accesories clean. To prevent corrsion and to maintain your high quality finish, wax or polish regulary with quality stainless polish. Use a non abrasive type automotive wax. Any use of abrasive soaps, polishes or waxes can be detrimental to the finish.