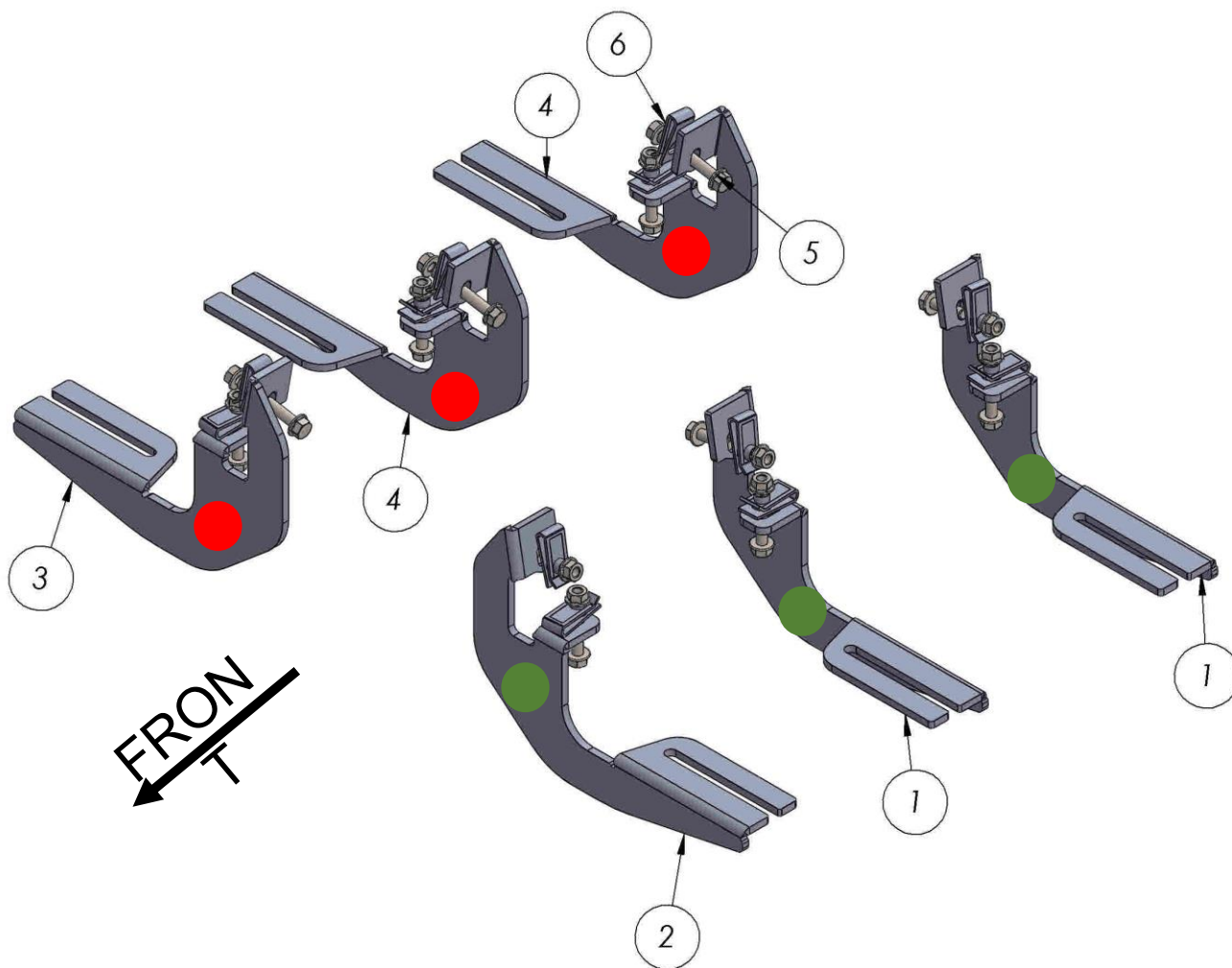
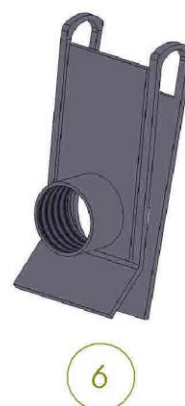


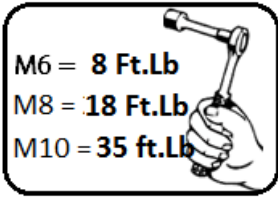


1424-CHEVROLET COLORADO 2015-PRESENT



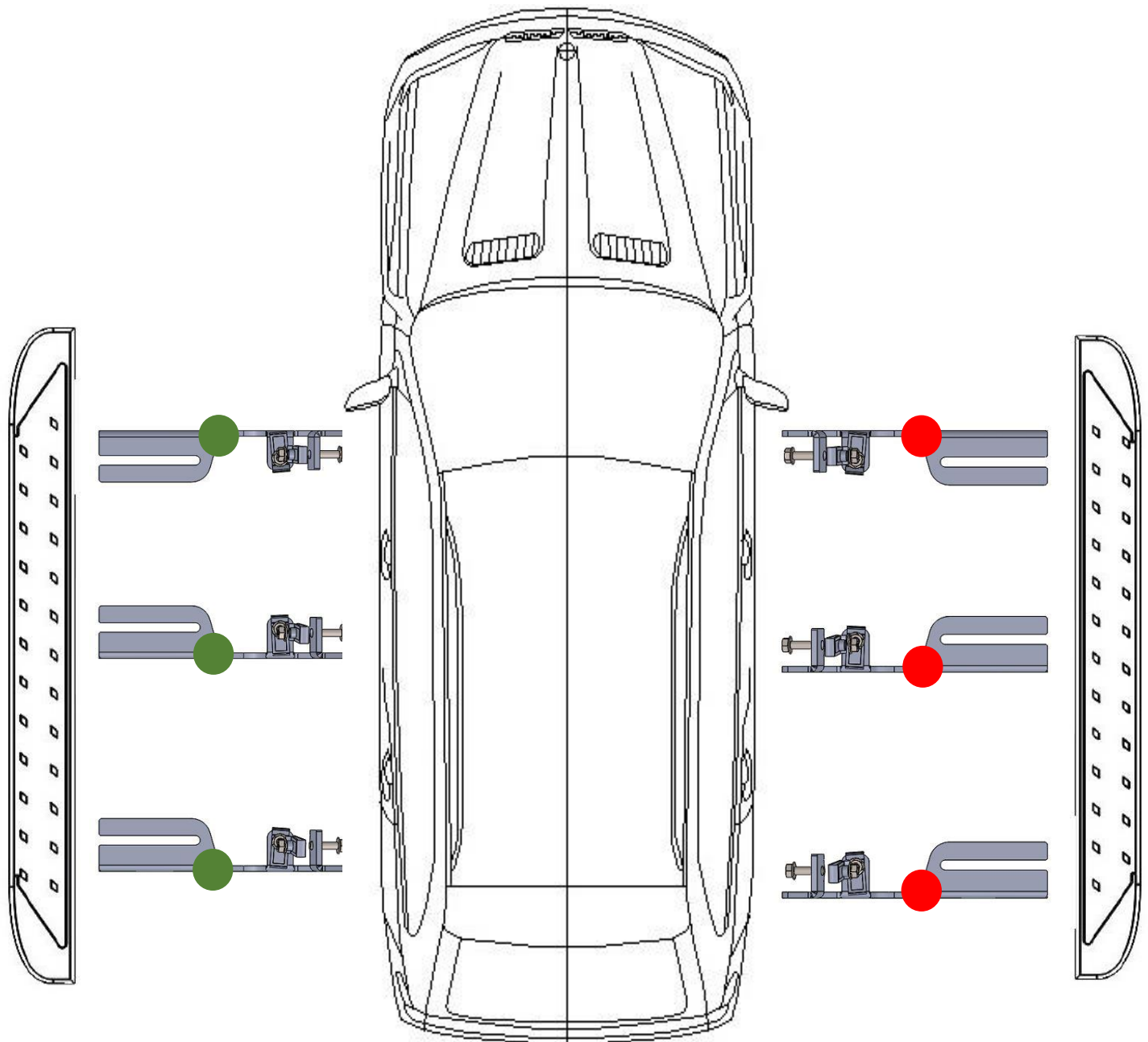
ITEM	PART NAME	QTY
1	1424850B0C0 DRIVER	2
2	1424850F0 DRIVER 1	1
3	1424850F0 PASSENGER	1
4	1424850B0C0 PASSENGER	2
5	DIN 6921 FLANGE BOLT M8 x 30	12
6	M8 U-NUT	12
7	DIN 6923 FLANGE NUT M8	12





- 1) Locate mounting points on vehicle as shown below. Note all positions are identical repeat 6 times
- 2) Remove rubber plugs and install DIN 6923 M8 Flange nut
- 3) Proceed to install all brackets with DIN 6921 M8 Flange bolt. Do not tighten anything yet
- 4) Proceed to install running boards and hand tight only.
- 5) Proceed to tighten bracket bolts to 18 ft.lb repeat 6 times.
- 6) Proceed to tighten running boards to 18 ft.lb **WARNING: Use of power tools will void warranty.**





**WARNING: Use of powertools will void warranty**

ATTENTION PLEASE! : DO NOT TIGHTEN ALL OF THE SCREWS UNTIL ALL OF THE PARTS ARE INSTALLED.

Keep your Romik accesories clean. To prevent corrsion and to maintain your high quality finish, wax or polish regulary with quality stainless polish. Use a non abrasive type automotive wax. Any use of abrasive soaps, polishes or waxes can be detrimental to the finish.

On our website you'll find a wide variety of high-quality Running Boards & Step Bars from Romik.