



4016 - WV Touareg 2007 - 2016

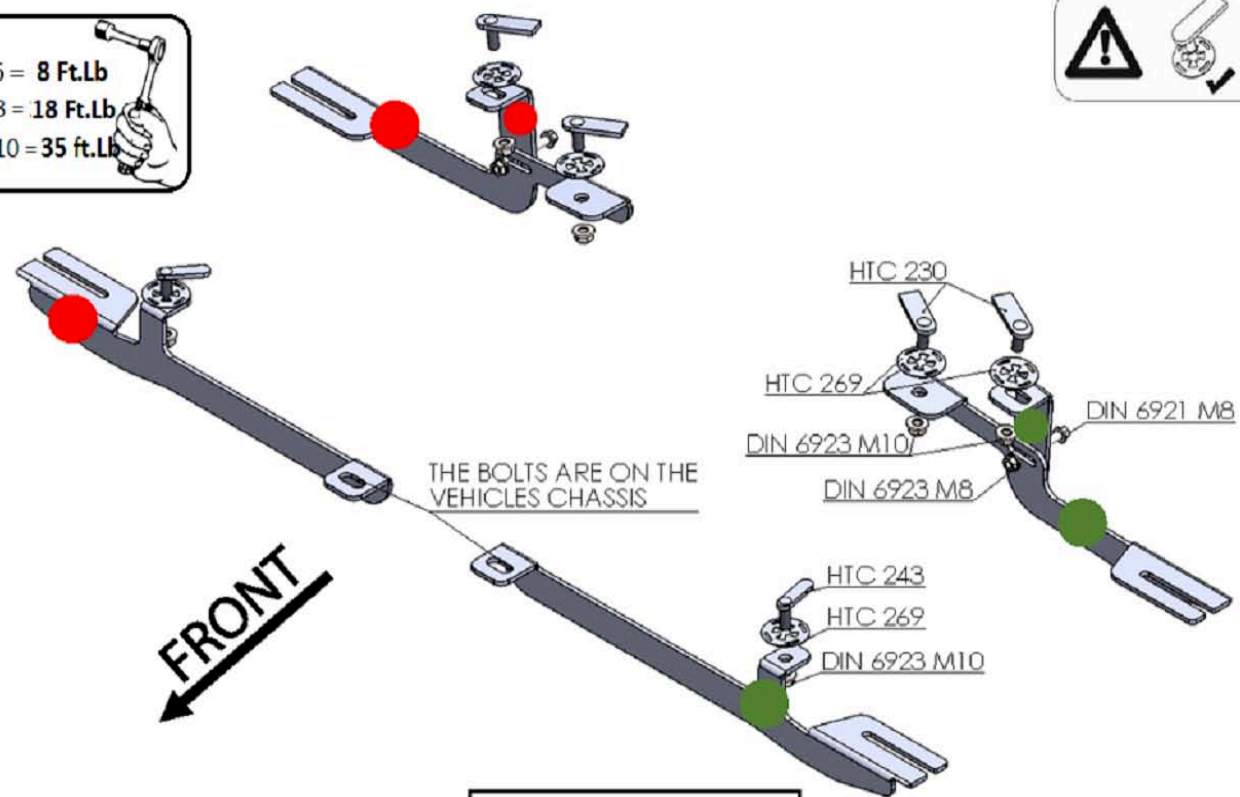
4016 - Porsche Cayanne 2007 - 2010

Installation Instructions



60 Minutes

M6 = 8 Ft.Lb
 M8 = 18 Ft.Lb
 M10 = 35 Ft.Lb



HARDWARE

4		HTC 230 - M10x25(4x20x60)
---	--	---------------------------

6		HTC 269 KLIPS (M10)
---	--	---------------------

6		FLANGE NUT M10 DIN 6923
---	--	-------------------------

2		HTC 243 - M10x25(5x13x50)
---	--	---------------------------

2		FLANGE BOLT DIN 6921 M8x30
---	--	----------------------------

2		FLANGE NUT M8 DIN 6923
---	--	------------------------

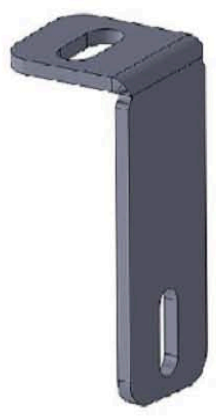
BRACKETS



(x2)

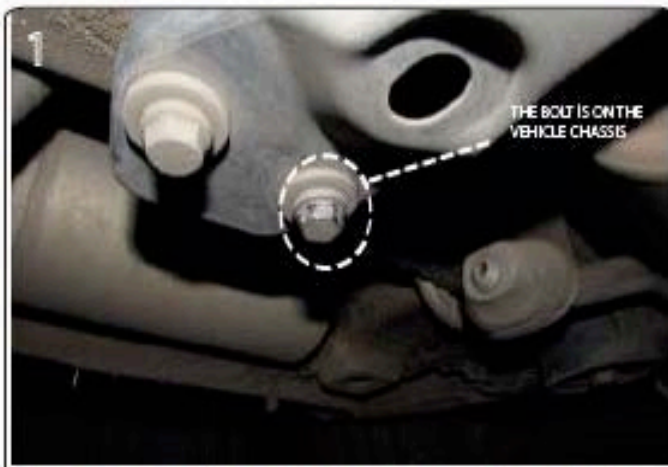


(x2)

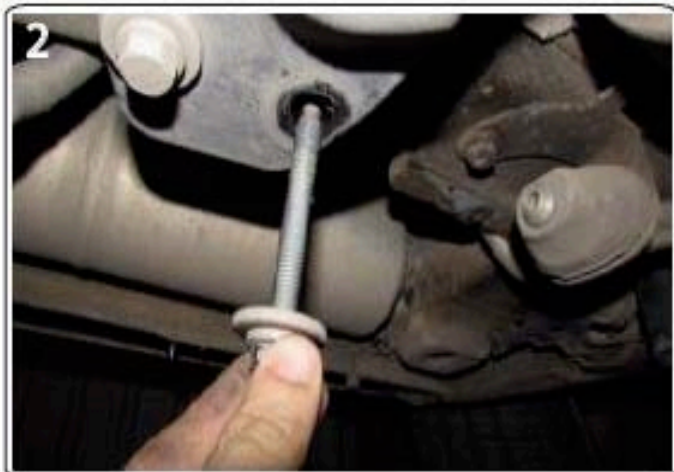


(x2)

Front Bracket Install



1) Remove factory crossmember bolt



2) Do not dispose it will be reused



3) Front bracket location



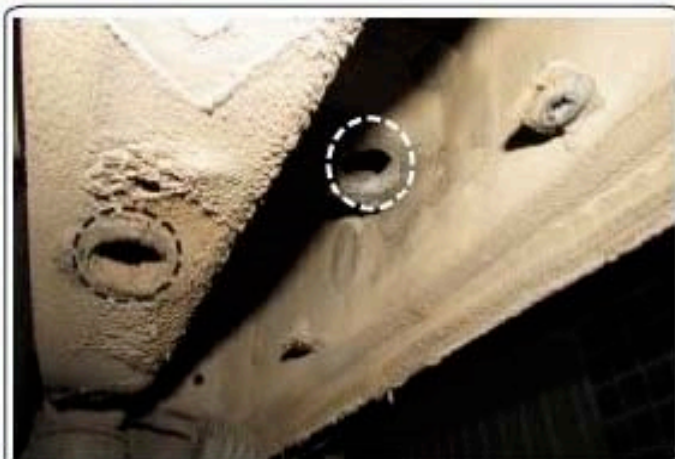
4) Install using factory bolt



5) Remove rubber plug and install HTC 243



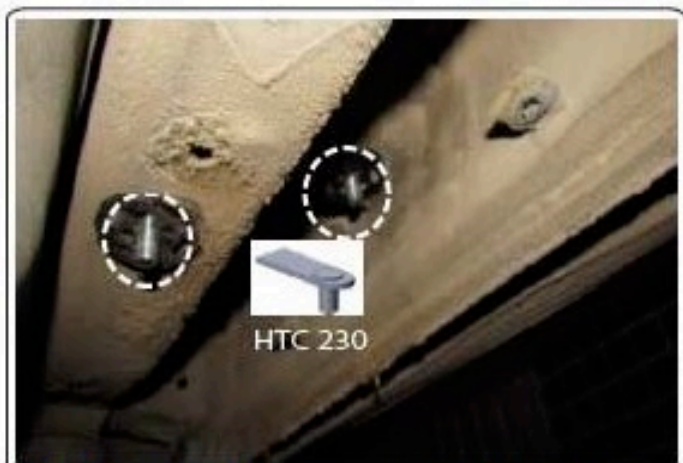
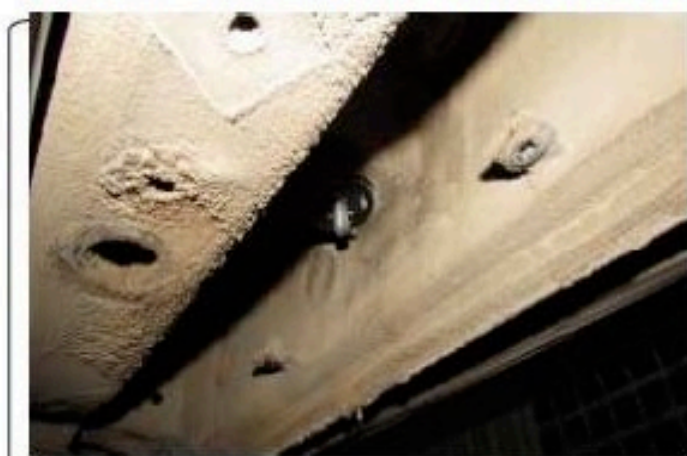
Rear bracket install, this requires removal and trimming of plastic panel



1) Locate extra support mounting area

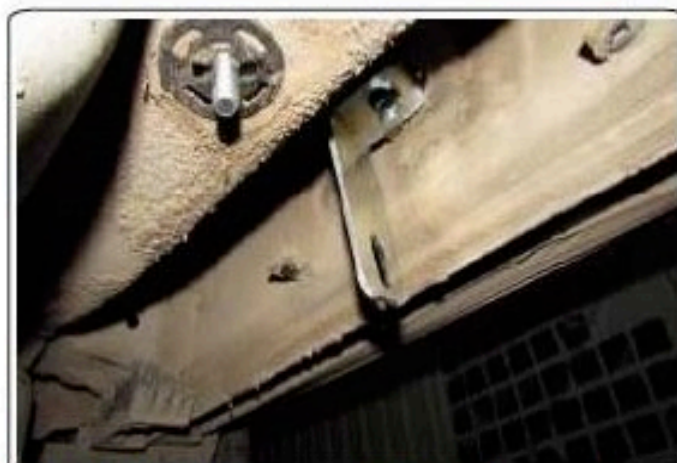


2) Insert supplied HTC 230



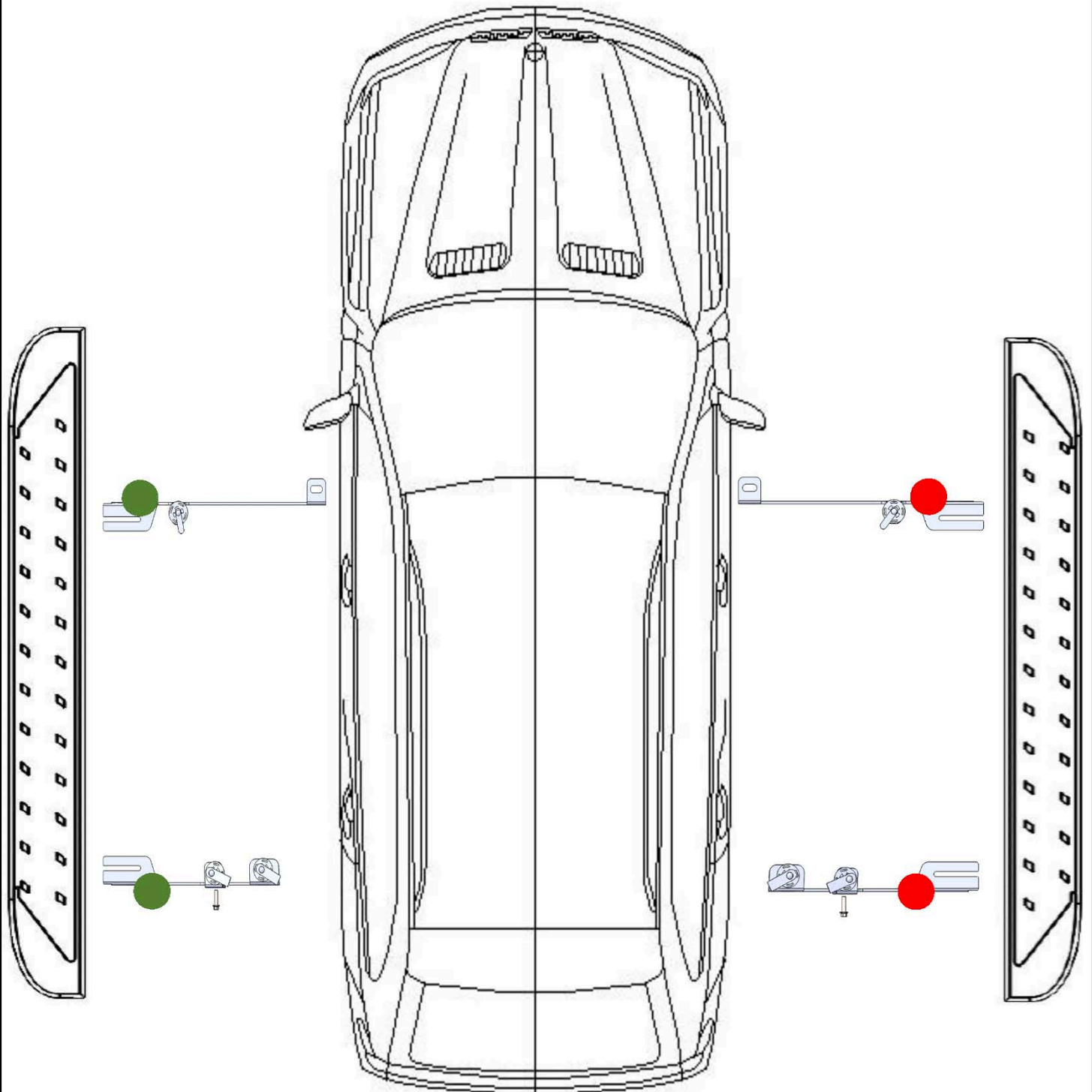
HTC 230

3) After inserting supplied HTC 230 proceed to install extra support as shown above



4) Install rear main bracket and attach to extra support as shown above

WARNING: Use of power tools will void the warranty



ATTENTION PLEASE! : DO NOT TIGHTEN ALL OF THE SCREWS UNTIL ALL OF THE PARTS ARE INSTALLED.

Keep your Romik accessories clean. To prevent corrosion and to maintain your high quality finish, wax or polish regularly with quality stainless polish. Use a non abrasive type automotive wax. Any use of abrasive soaps, polishes or waxes can be detrimental to the finish.

On our website you'll find a wide variety of high-quality Running Boards & Step Bars from Romik.