



2130 Ford Explorer 2011-Present

### Installation Instructions







**60 Minutes**

NOTE : Before starting this installation make sure all the hardware is included and this part number matches your vehicle

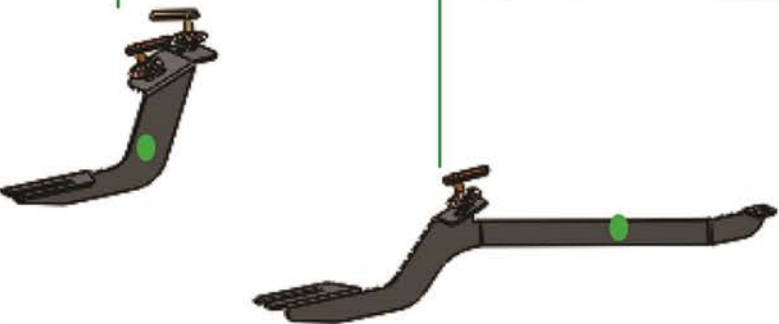
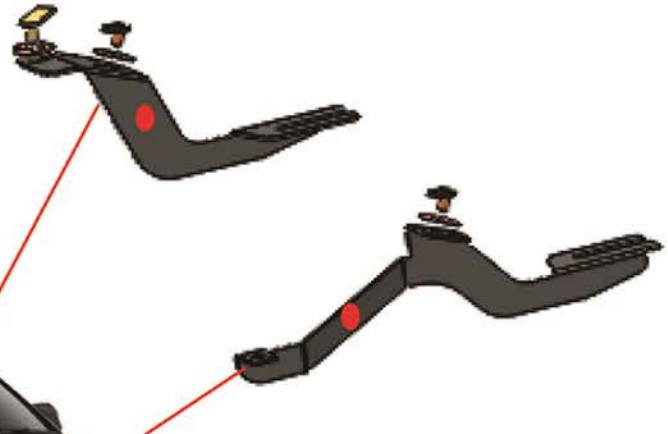
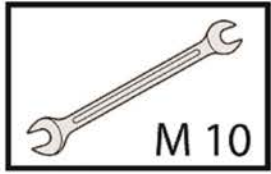
# FORD EXPLORER 2011- PRESENT

# ROMIK®

6		DIN 6923;M10	2		HTC 230 M10x30	4		HTC 232 M10x30 M10X30(5X15X60)
6		HTC 269;M10						



**M6 = 8 Ft.Lb**  
**M8 = 18 Ft.Lb**  
**M10 = 35 ft.Lb**

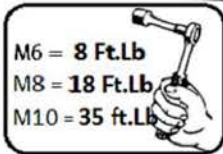


ATTENTION PLEASE ! DO NOT TIGHTEN ALL OF THE SCREWS UNTIL ALL OF THE PARTS ARE INSTALLED

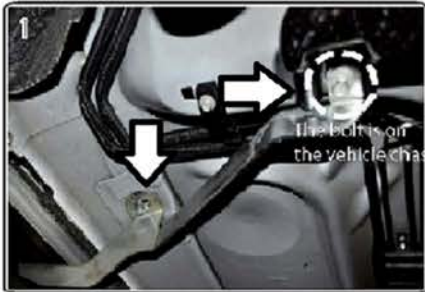
Keep your Romik accessories clean. To prevent corrosion and to maintain your high quality finish, wax or polish regularly with quality stainless polish. Use a non abrasive type automotive wax. Any use of abrasive soaps, polishes or waxes can be detrimental to the finish



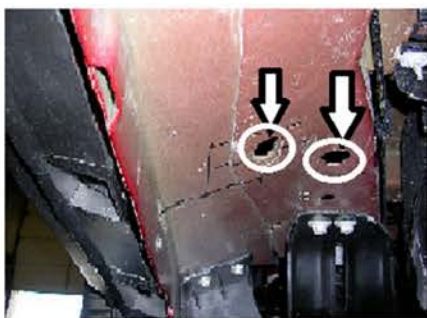
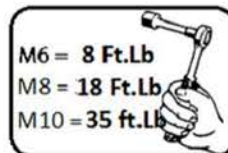
- 1) Locate front mounting point and shown below image #1 and remove factory bolt. (this is reused)
- 2) Locate second mounting point and insert HTC 232
- 3) Proceed to install front bracket with supplied hardware.
- 4) Do not tighten anything yet, brackets must be loose in order to install running boards.



**WARNING: Use of powertools will void warranty**

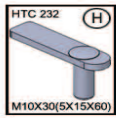


- 1) Locate rear mounting area as shown below.
- 2) Proceed to install supplied inserts HTC 232 and HTC 230
- 3) Proceed to install rear brackets
- 4) Do not tighten anything yet
- 5) Install running boards, hand tighten hardware.



- 1) After installing both front and rear brackets loose and running boards hand tighten proceed to torque hardware
- 2) Torque hardware M10 to 35 Ft.Lb
- 3) Proceed to torque running boards hardware M8 to 18 Ft.Lb

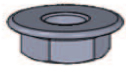
**WARNING: Use of powertools will void warranty**



HTC 232

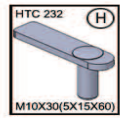


HTC 269



DIN 6923

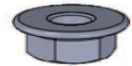
The bolt is on the vehicle chassis.



HTC 232

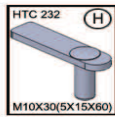
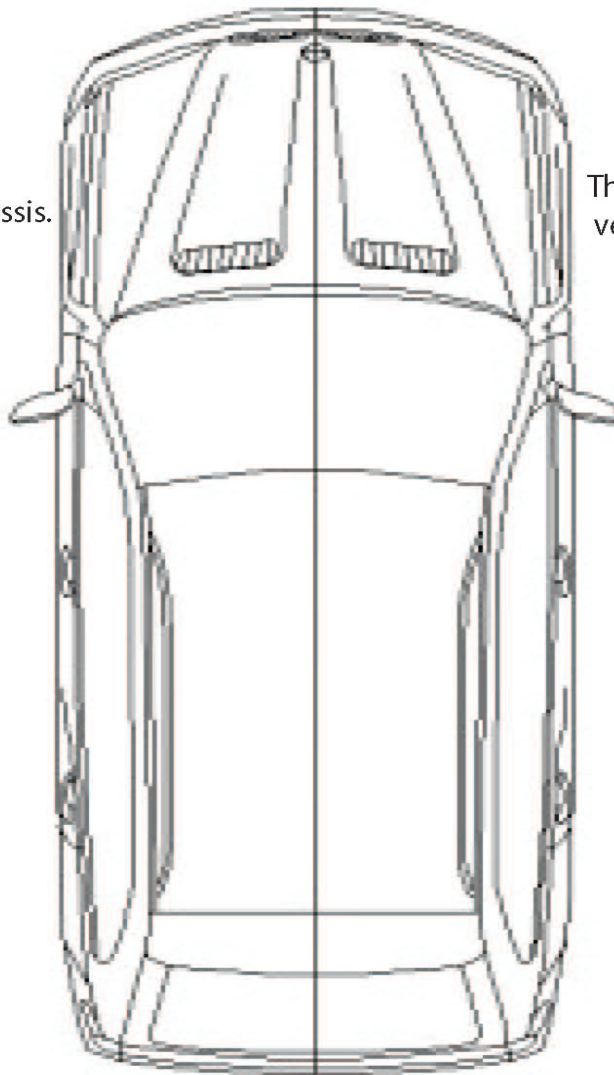
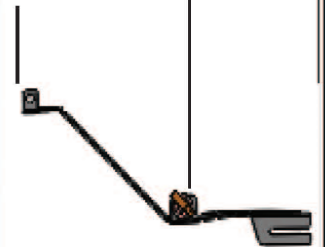


HTC 269

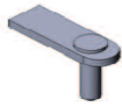


DIN 6923

The bolt is on the vehicle chassis.



HTC 232



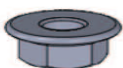
HTC 230



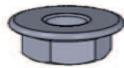
HTC 269



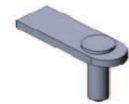
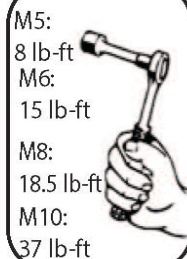
HTC 269



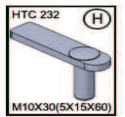
DIN 6923



DIN 6923



HTC 230



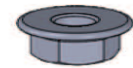
HTC 232



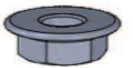
HTC 269



HTC 269



DIN 6923



DIN 6923