




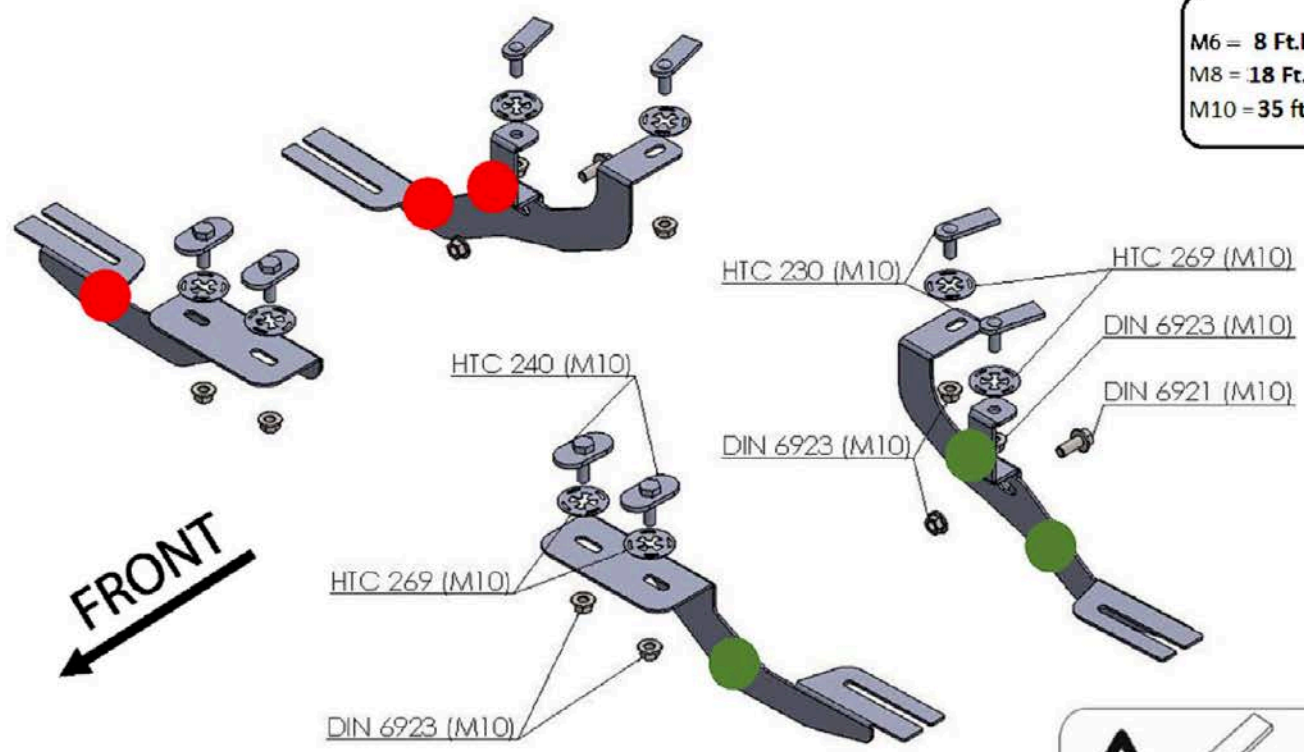
2820 – DISCOVERY SPORT 2014 - PRESENT

Installation Instructions





60 Minutes

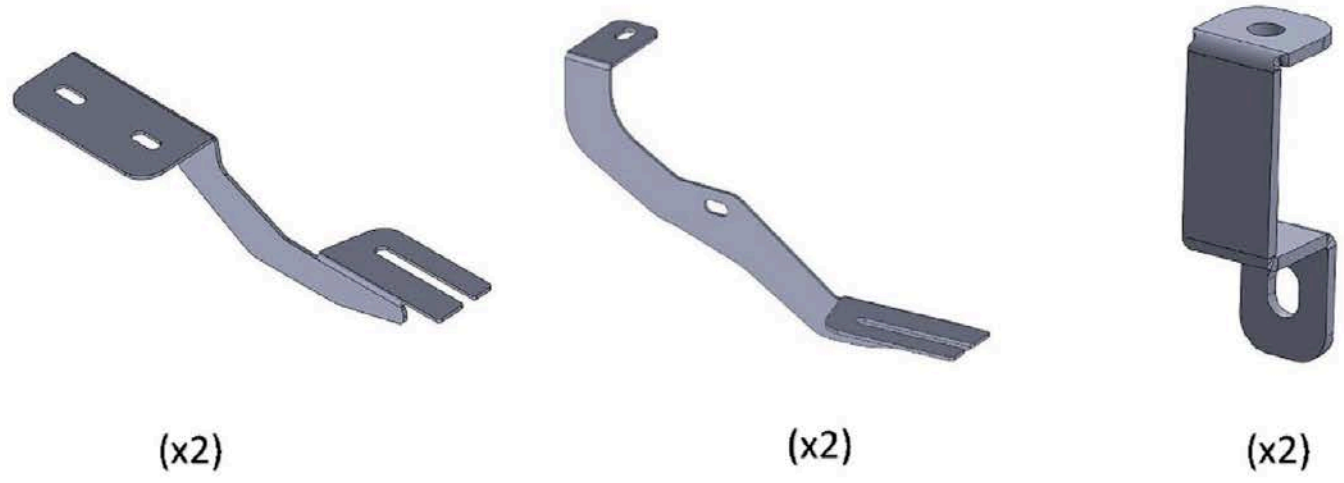
M6 = 8 Ft.Lb
M8 = 18 Ft.Lb
M10 = 35 Ft.Lb

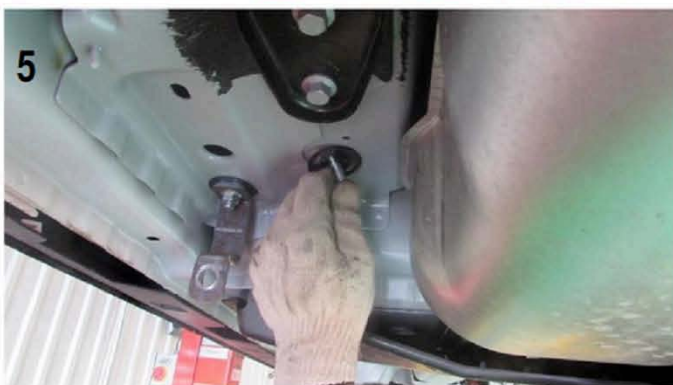
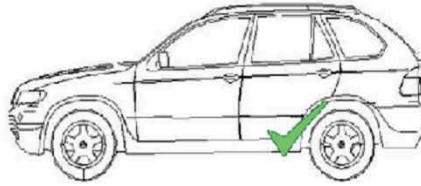



HARDWARE

4		HTC 230 – (M10x25) (4x20x60)	8		HTC 269 CLIPS (M10)	10		DIN 6923 FLANGE NUT (M10)
4		HTC 240 (M10x30) (5x34x60)	2		DIN 6921 BOLT (M10)			

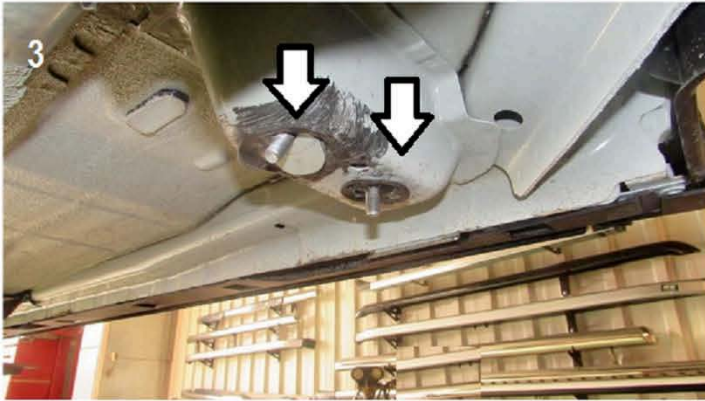
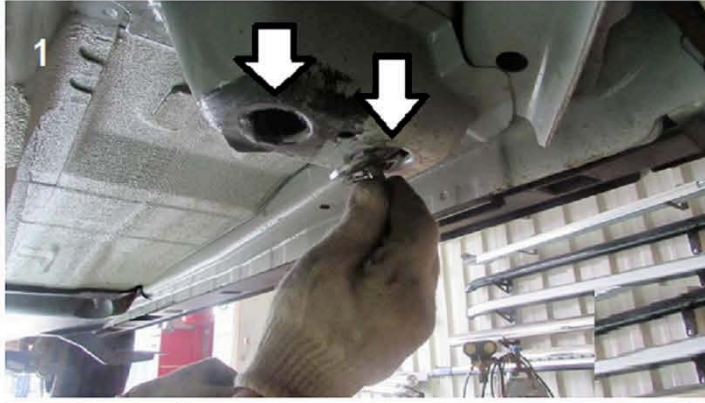
BRACKETS





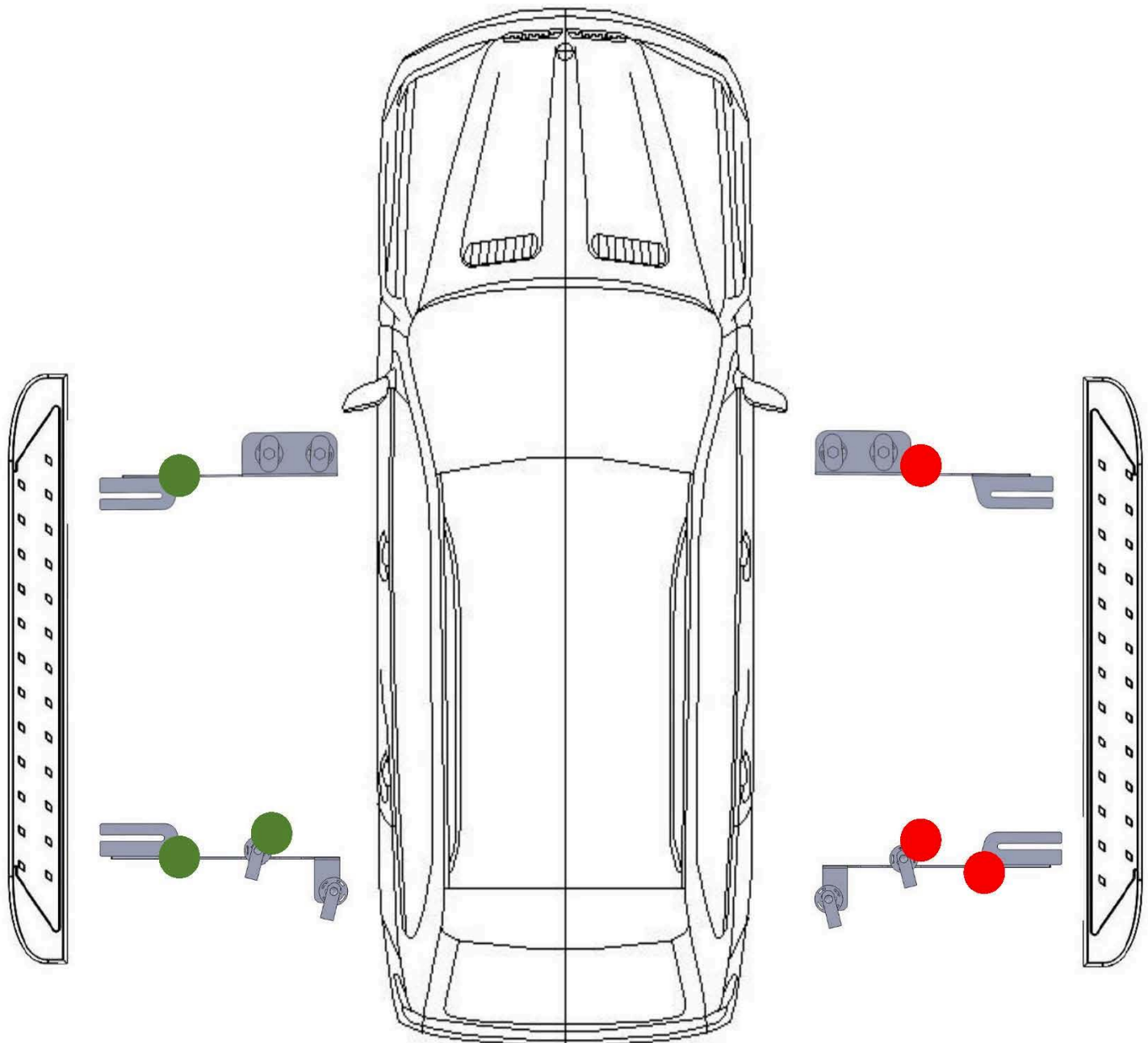
- 1) Remove factory plastic panels from under the vehicle
- 2) Locate rear mounting point image #1
- 3) Insert HTC 230 with HTC 269 as shown on image #2
- 4) Attach extra support bracket as shown on image #3 do not tighten
- 5) Locate main support mounting point image #4
- 6) Insert HTC 230 with HTC 269 as shown on image #5
- 7) Attach main bracket as shown on image #6 do not tighten
- 8) Connect extra support to main support bracket with supplied M10 hardware do not tighten

Proceed to front bracket area



- 1) Locate front mounting points image #1
- 2) Insert HTC 240 with HTC 269 as shown on image #3
- 3) Attach front bracket as shown on image #4 do not tighten
- 4) Loosen M8 hardware on back of steps
- 5) Attach steps to mounting brackets hand tight only
- 6) Proceed to tighten mounting brackets M10 to 35 ft lbs and M8 to 18 ft lbs
- 7) Proceed to tighten step hardware M8 to 18 ft lbs do not over tighten as it may damage steps
- 8) Re-install plastic panels, if necessary trim around brackets to install
- 9) Repeat procedure on opposite side

WARNING: Use of power tools will void the warranty



ATTENTION PLEASE! : DO NOT TIGHTEN ALL OF THE SCREWS UNTIL ALL OF THE PARTS ARE INSTALLED.

Keep your Romik accessories clean. To prevent corrosion and to maintain your high quality finish, wax or polish regularly with quality stainless polish. Use a non abrasive type automotive wax. Any use of abrasive soaps, polishes or waxes can be detrimental to the finish.

On our website you'll find a wide variety of high-quality Running Boards & Step Bars from Romik.