



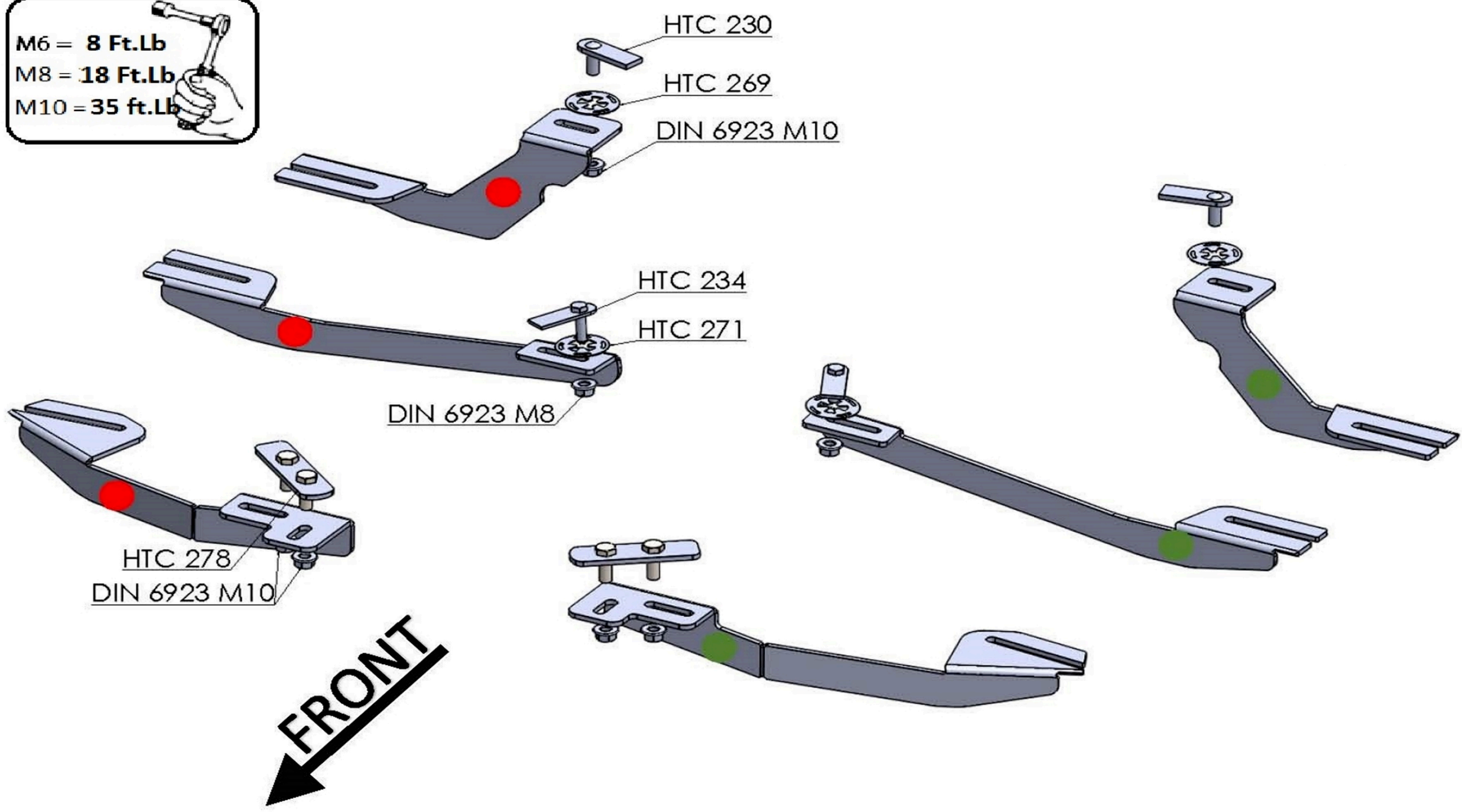
2616 - Jeep Compass 2007 - Present

Installation Instructions



60 Minutes

M6 = 8 Ft.Lb
M8 = 18 Ft.Lb
M10 = 35 ft.Lb

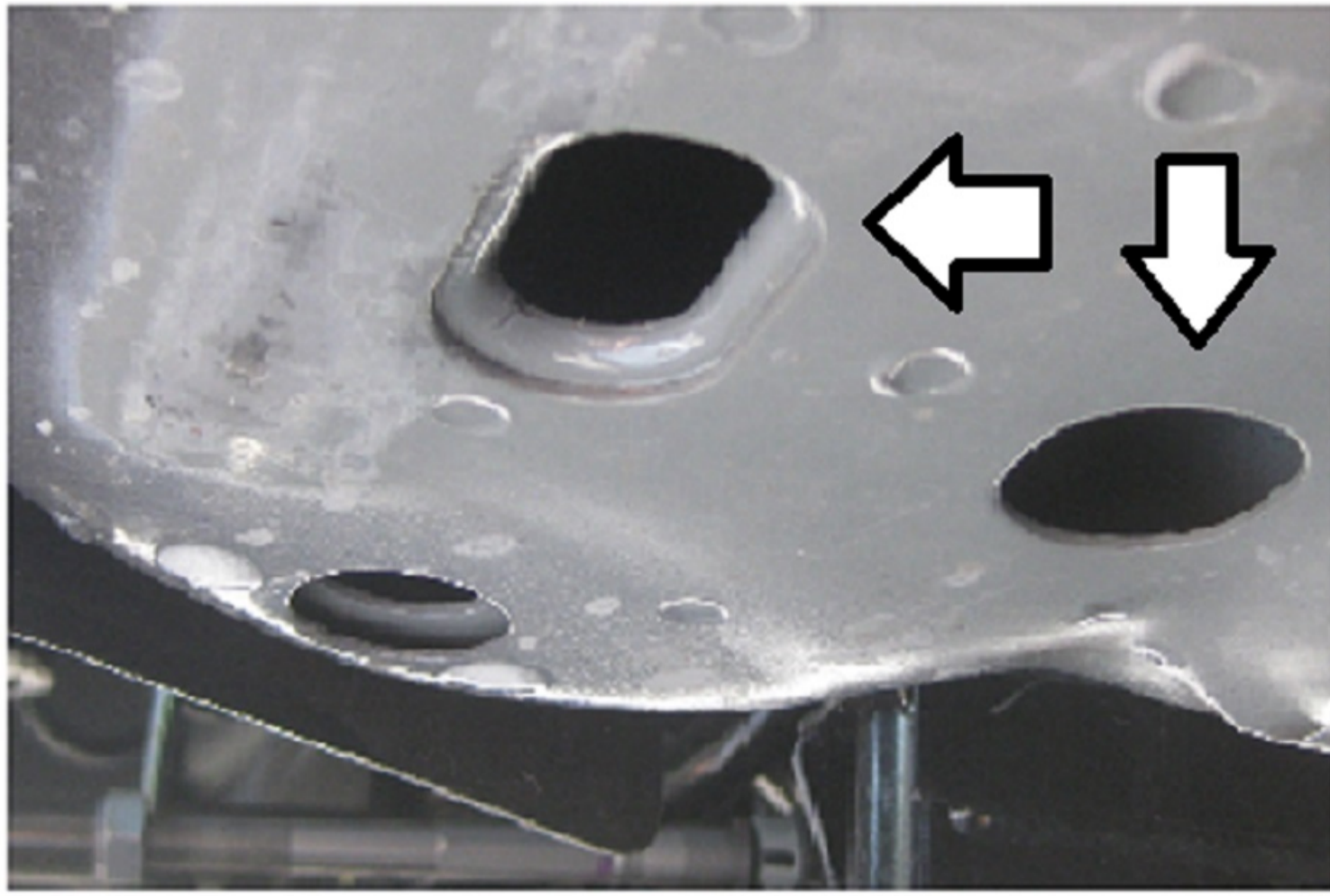


HARDWARE

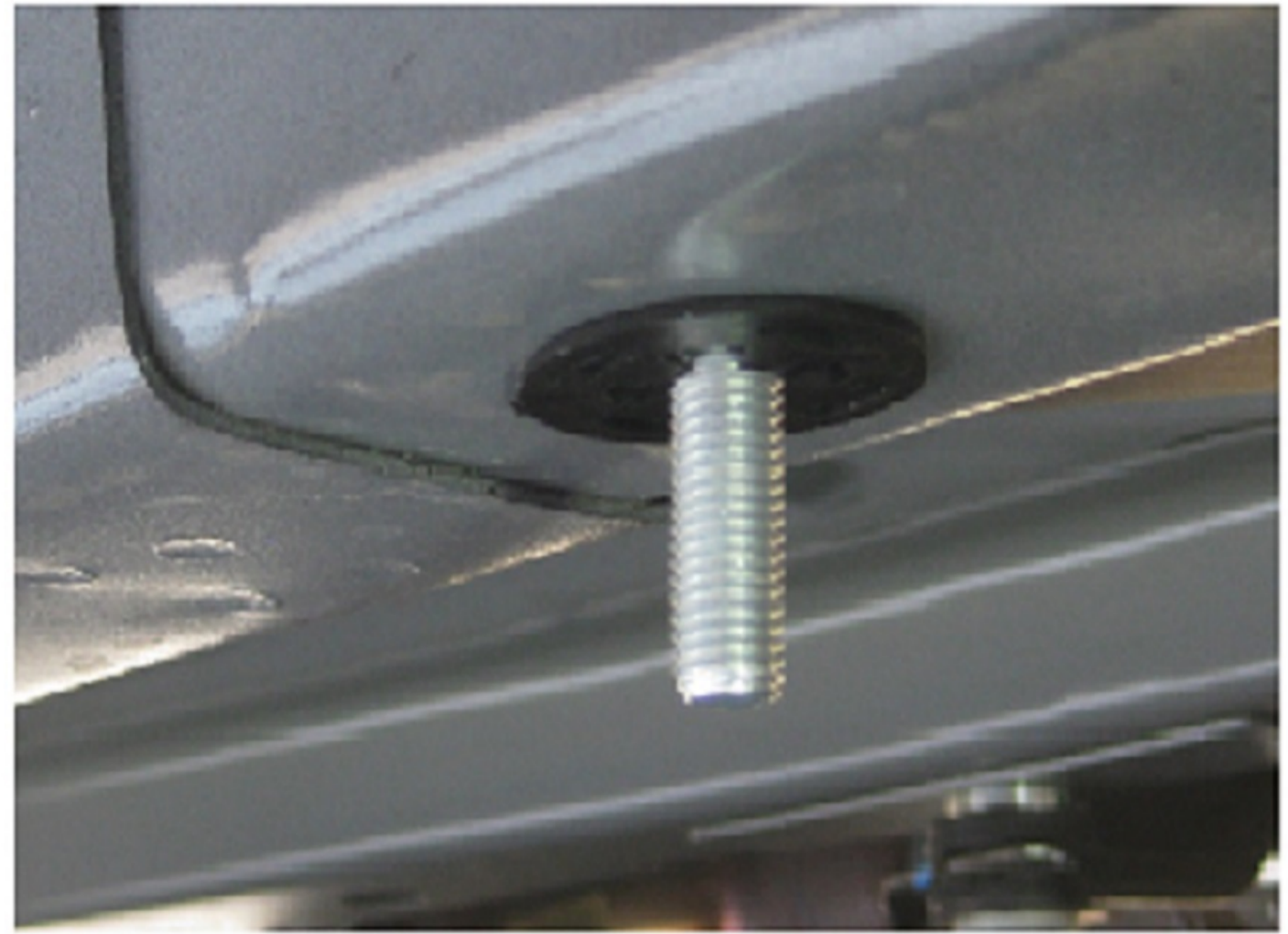
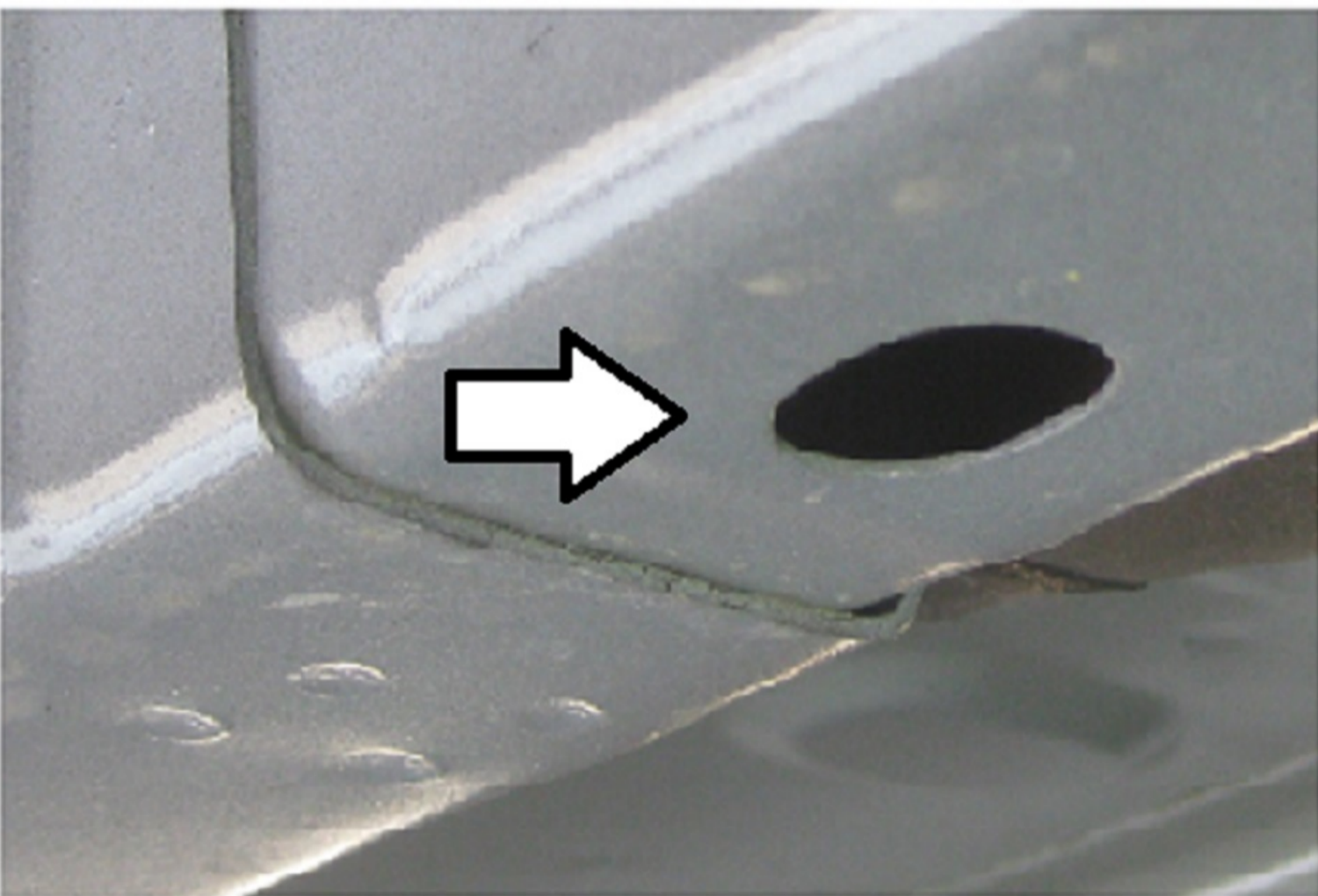
2		HTC 230 M10x25(4x20x60)	2		HTC 278 M10x30 (4x25x90)	2		HTC 269 KLIPS (M10)
6		DIN 6923 NUT (M10)	2		HTC 234 - M8X30 (3X20X60)	2		HTC 269 KLIPS (M8)
2		DIN 6923 NUT (M8)						

BRACKETS

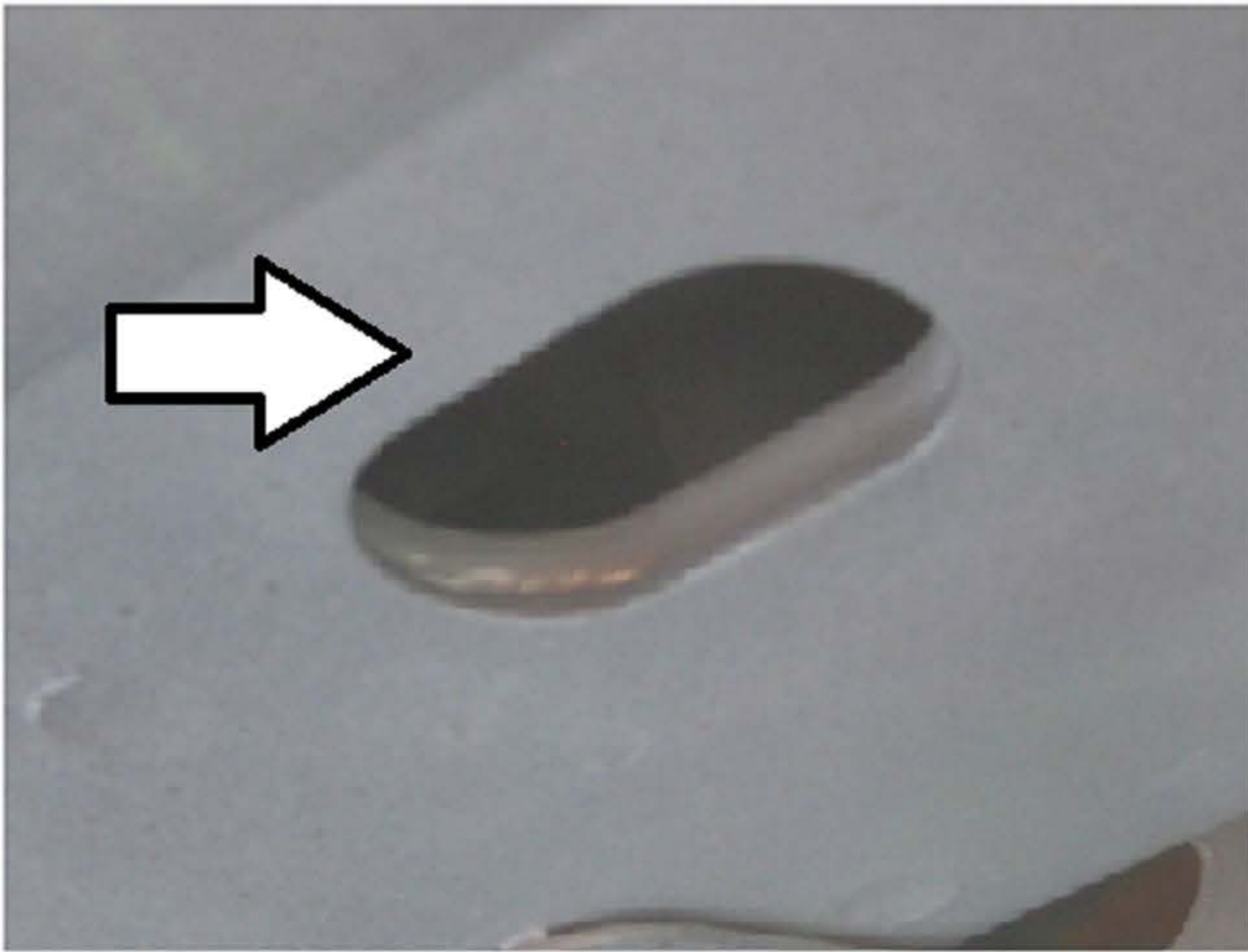




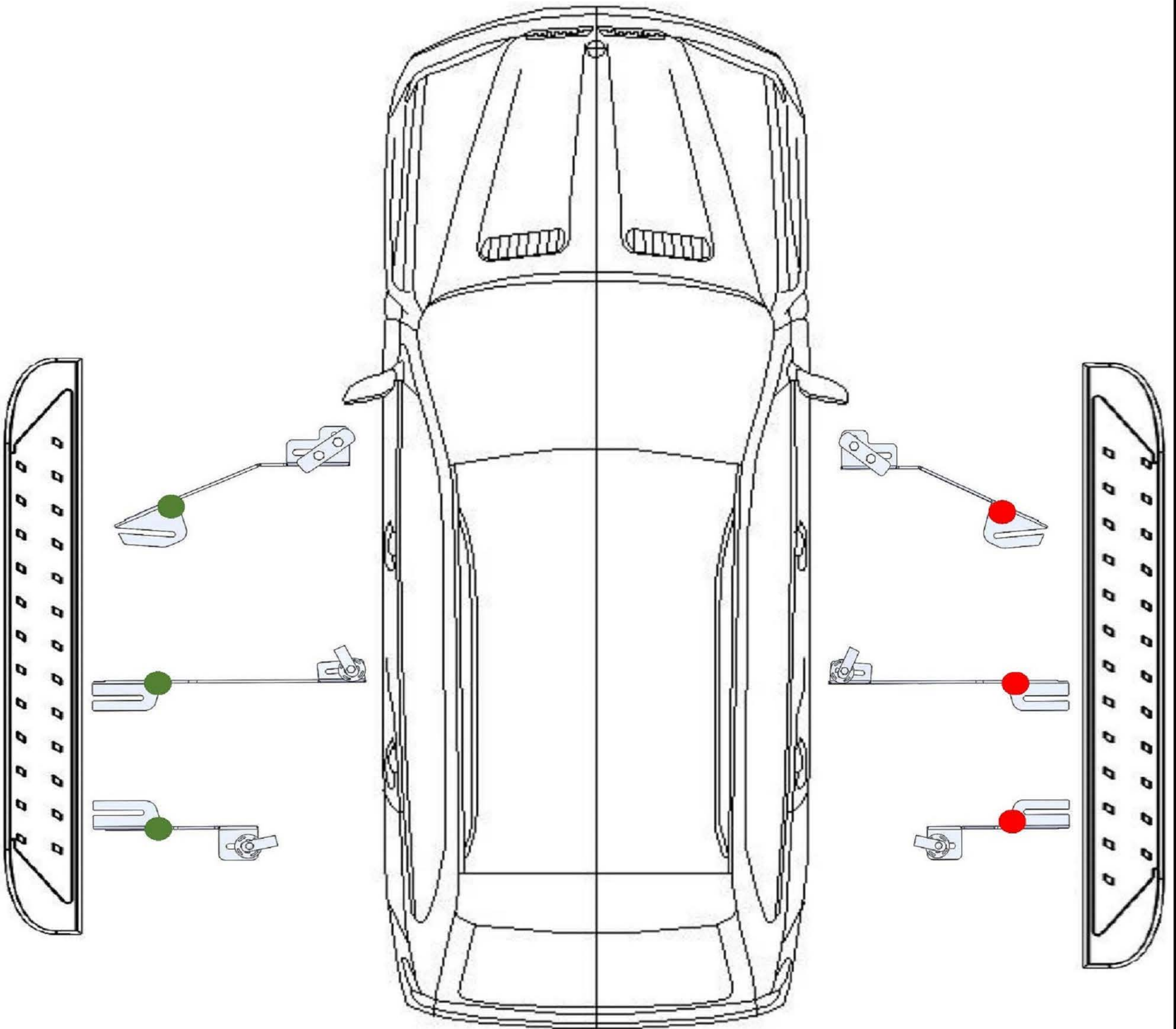
- 1) Locate front mounting area.
- 2) Install HTC 278 as shown above
- 3) Install front bracket. Hand tight only.



- 4) Locate middle bracket mounting area.
- 5) Insert HTC 234 as shown above
- 6) Install middle bracket. Hand tight only



- 7) Locate rear bracket mounting area
- 8) Install HTC 230 as shown above
- 9) Install rear bracket. Hand tight only
- 10) Proceed to install running boards, align and hand tight only
- 11) Proceed to tighten bracket hardware. M8 to 18 ft lb M10 to 35 Ft. lb
- 12) Proceed to tighten running board hardware M8 18 Ft. lb



ATTENTION PLEASE! : DO NOT TIGHTEN ALL OF THE SCREWS UNTIL ALL OF THE PARTS ARE INSTALLED.

Keep your Romik accesories clean. To prevent corrsion and to mantain your high quality finish, wax or polish regulary with quality stainless polish. Use a non abrasive type automotive wax. Any use of abrasive soaps, polishes or waxes can be detrimental to the finish.

On our website you'll find a wide variety of high-quality Running Boards & Step Bars from Romik.