



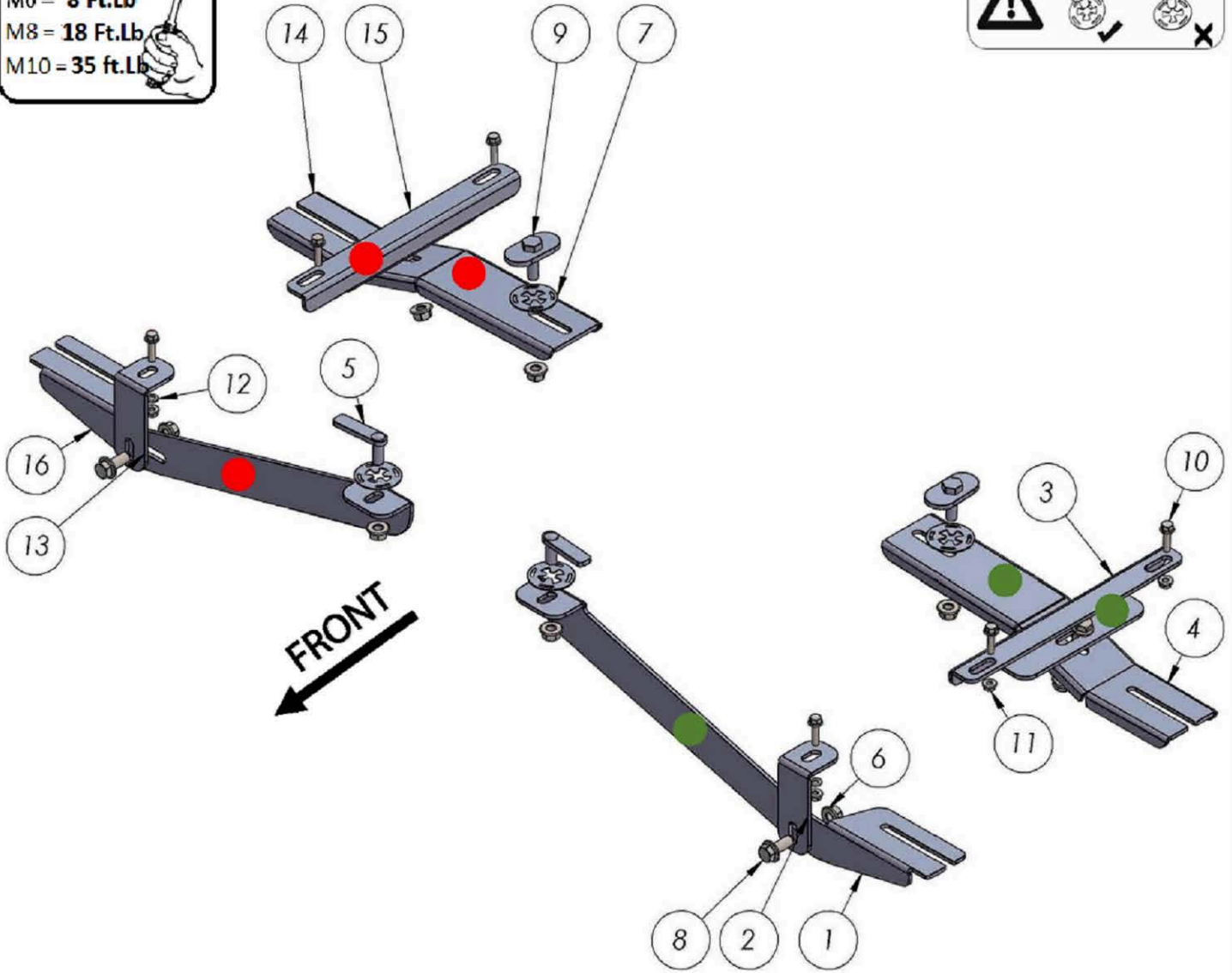
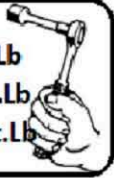
1637 - FIAT 500X - 500L 2015 - PRESENT

Installation Instructions

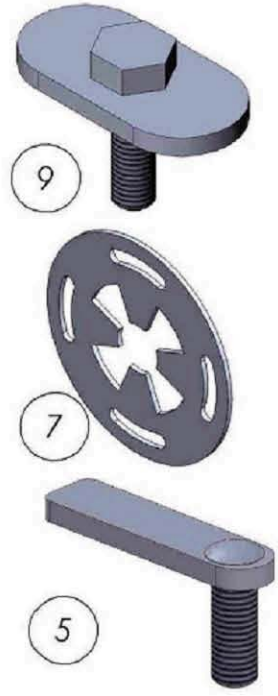


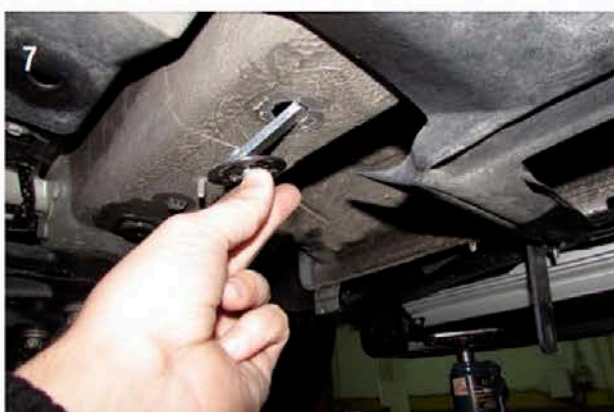
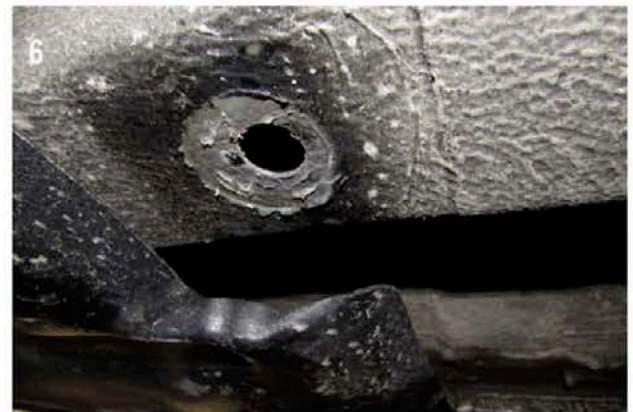
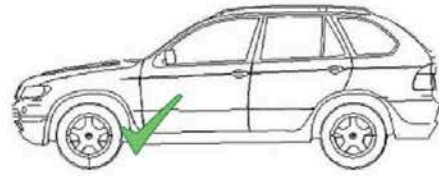
60 Minutes

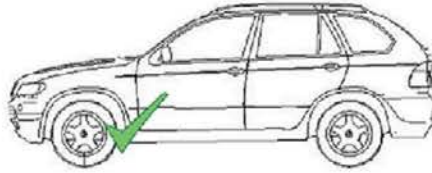
M6 = 8 Ft.Lb
M8 = 18 Ft.Lb
M10 = 35 ft.Lb



ITEM	PART NUMBER	QTY
1	1637850F0 DRIVER	1
2	1637850F1 DRIVER	1
3	1637850B1 DRIVER	1
4	1637850B0 DRIVER	1
5	HTC 262 - M10X30 (5X15X60)	2
6	DIN 6923 FLANGE NUT - M10	8
7	HTC 269 - CLIPS (M10)	4
8	DIN 6921 FLANGE BOLT - M10 x 25	4
9	HTC 240 - M10X30 ORTADAN DELİKLİ YAPRAK CIVATA (5X34X60)	2
10	DIN 6921 FLANGE BOLT - M6 x 25	6
11	DIN 6923 FLANGE NUT - M6	6
12	DIN 125 WASHER - M6	2
13	1637850F1 PASSENGER	1
14	1637850B0 PASSENGER	1
15	1637850B1 PASSENGER	1
16	1637850F0 PASSENGER	1

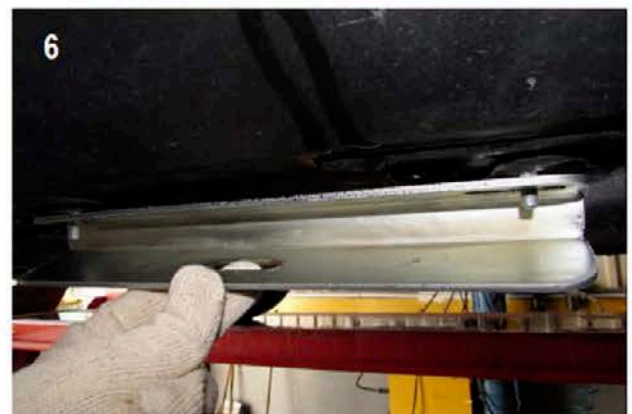
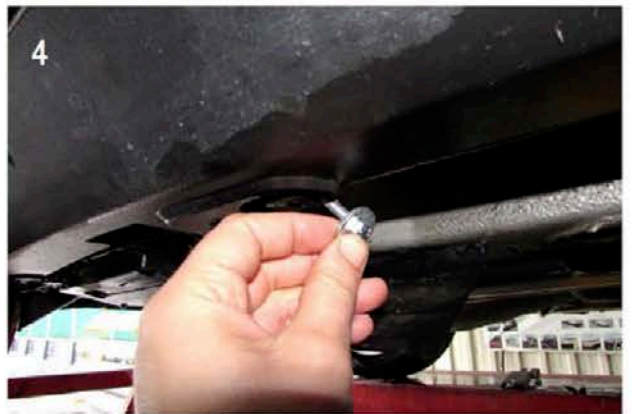
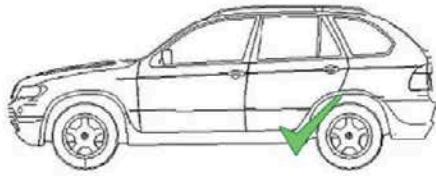


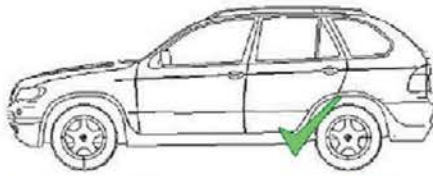




- 1) Locate front mounting position, remove factory plastic bolt which will not be used image #1
- 2) Insert supplied M6 bolt onto front hole position as shown on image #2
- 3) Attach front support "L" bracket as shown on image #3 and image #4 do not tighten
- 4) Locate rubber plug on chassis and remove to gain access to mounting location image #5 and image #6
- 5) Insert HTC 262 and HTC 269 as shown on image #7 and image #8
- 6) Attach main front bracket as shown on image #9 do not tighten yet
- 7) Connect "L" support bracket to main bracket using M10 hardware do not tighten yet.

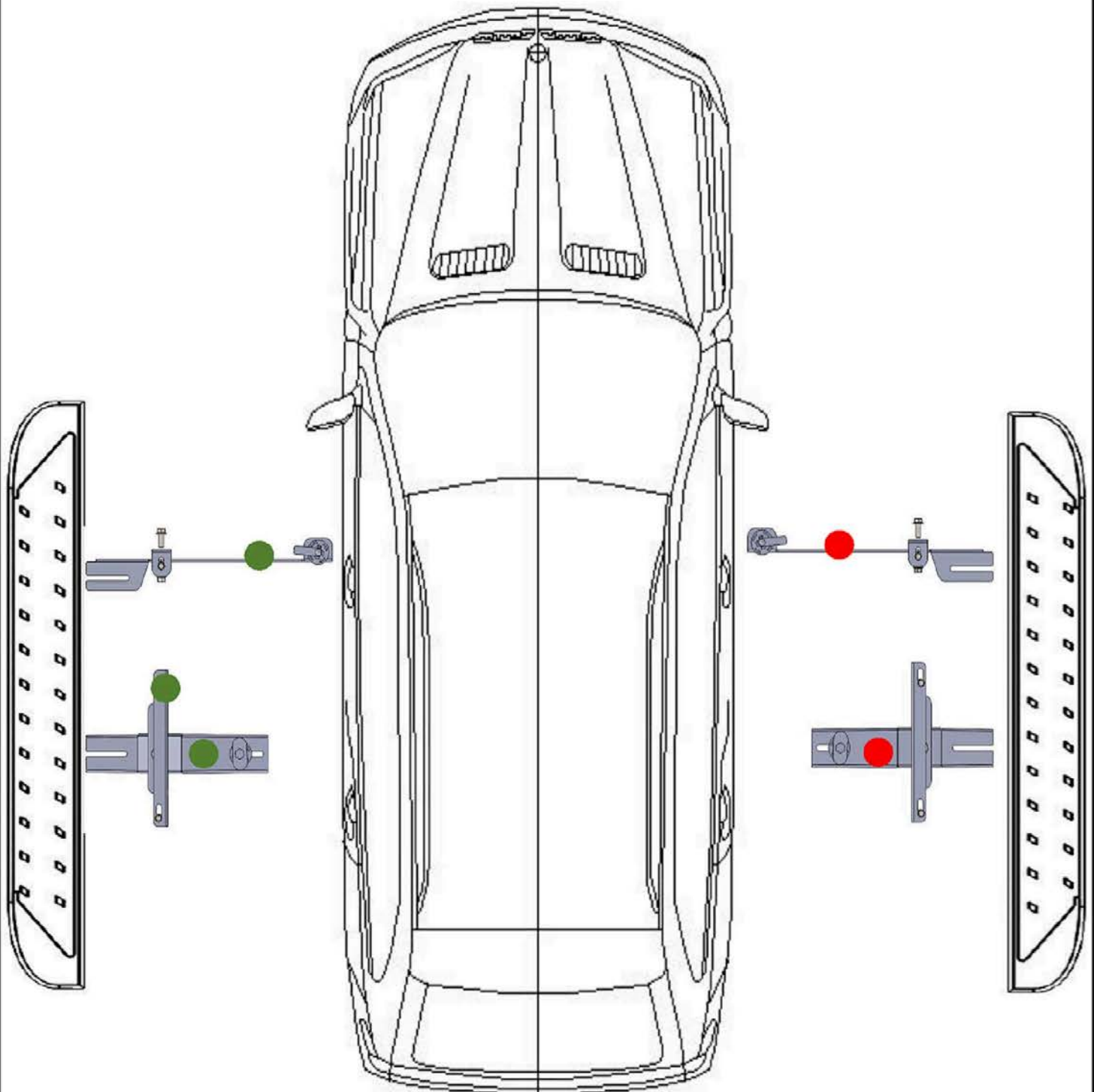
Proceed to rear bracket installation.





- 1) Locate rear mounting points as shown on image #1 and image #4
- 2) Remove factory plastic hold-downs and dispose Image #2 (2 per side)
- 3) Insert M6 bolt as shown on image #3 and image #4 place plastic panels back in place image #5
- 4) Attach support bracket as show on image #6
- 5) Locate rear main support area and remove rubber plug image #9 and image #10
- 6) Insert HTC 240 with HTC 269 as shown on image #11
- 7) Attach rear bracket as shown on image#12 do not tighten
- 8) Attach rear main bracket to extra support as shown on image#13 and image#14 do not tighten
- 10) Loosen M8 hardware on steps and slide onto brackets, align and set in place and hand tight only
- 11) Proceed to torque M10 hardware to 35 ft lbs, M8 to 18 ft lbs and M6 to 8 ft lbs on brackets.
- 12) Proceed to torque M8 hardware to 18 ft lbs on steps, do not use powertools as this may damage the Steps
- 13) Repeat procedure on opposite side.

Warning: Do not use powertools as it will void the warranty



ATTENTION PLEASE! : DO NOT TIGHTEN ALL OF THE SCREWS UNTIL ALL OF THE PARTS ARE INSTALLED.

Keep your Romik accessories clean. To prevent corrosion and to maintain your high quality finish, wax or polish regularly with quality stainless polish. Use a non abrasive type automotive wax. Any use of abrasive soaps, polishes or waxes can be detrimental to the finish.

On our website you'll find a wide variety of high-quality [Running Boards & Step Bars](#) from [Romik](#).