



ROMIK

1014 Audi Q7 2017-Present

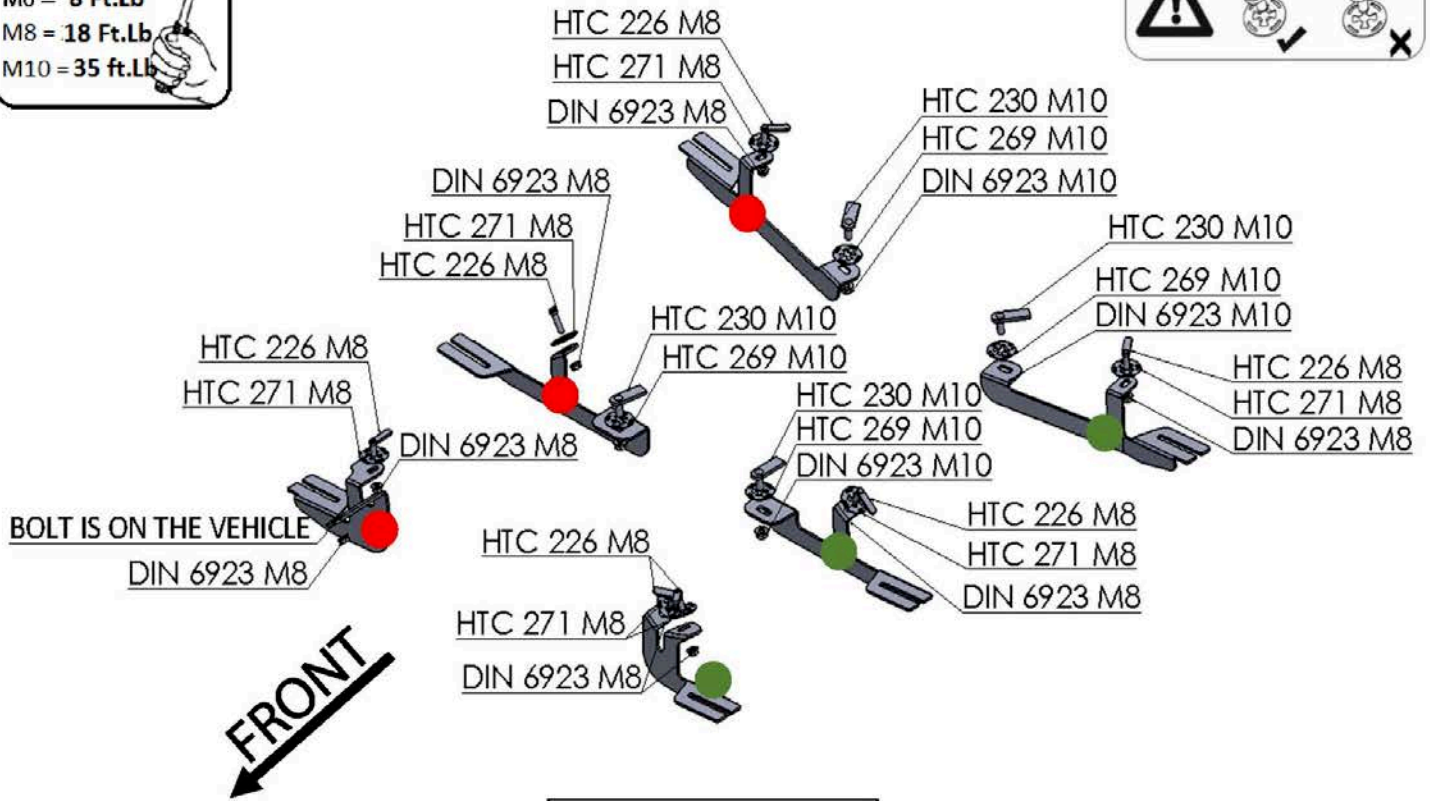


180 Minutes

Installation Instructions

Note: Due to the complexity of this installation, Professional installation is recommended.

M6 = 8 Ft.Lb
M8 = 18 Ft.Lb
M10 = 35 ft.Lb



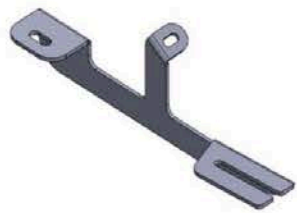
HARDWARE

4		HTC 230 - M10x25 (4x20x60)
4		HTC 269 KLIPS (M10)

7		HTC 226 - M8X30 (4X10X37)
7		HTC 271 KLIPS (M8)

8		FLANGE NUT M8 DIN 6923
4		FLANGE NUT M10 DIN 6923

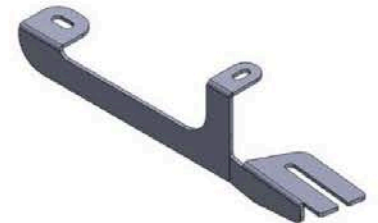
BRACKETS



MIDDLE DRIVER(x1)



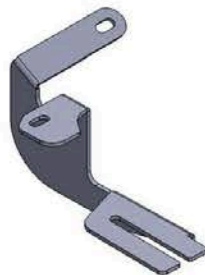
FRONT DRIVER(x1)



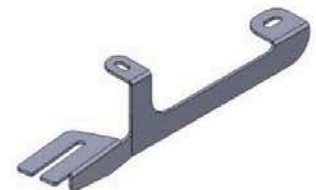
REAR - DRIVER(x1)



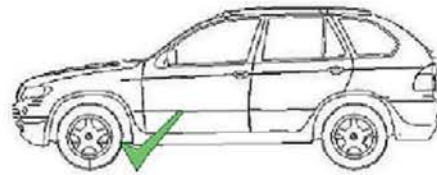
MIDDLE PASSENGER(x1)



FRONT PASSENGER(x1)



REAR PASSENGER(x1)

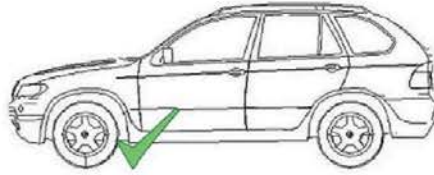


FRONT - PASSENGER

NOTE: Plastic panels must be removed and trimmed to complete installation



- 1) Locate and remove factory rubber plugs image #1 insert HTC 226
- 2) Locate factory stud image #2, and place bracket using supplied M8 hardware
- 3) Attach bracket using supplied hardware as shown on image #5 and #6 do not tighten yet

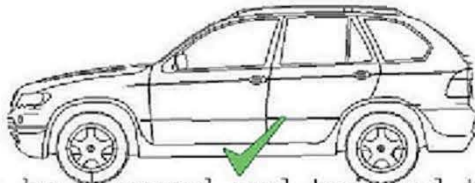


FRONT - DRIVER

NOTE: Plastic panels must be removed and trimmed to complete installation



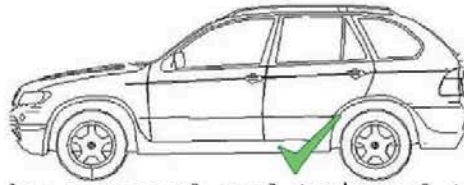
- 4) Note driver and passenger side front are different.
- 5) Locate and remove rubber plugs as shown on images #7 and #8
- 6) Insert supplied HTC 226 as shown on image #9 and #10
- 7) Attach bracket using supplied hardware as shown on image #11 and #12 once attached do not tighten yet



NOTE: Plastic panels must be removed and trimmed to complete installation



- 8) Locate and remove factory rubber plugs as shown on image #13
- 9) Insert HTC 226 image #14
- 10) Locate and remove rubber plug as shown on image #15
- 11) Install HTC 230 as shown on image #16
- 12) Attach middle bracket using supplied hardware image #17 and #18 do not tighten yet proceed to rear bracket.

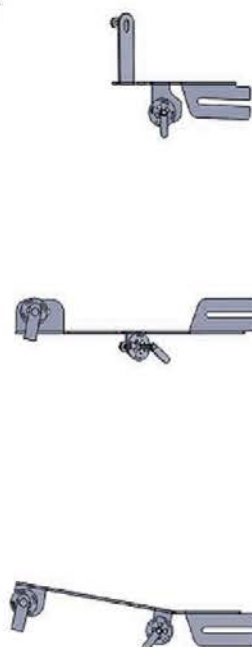
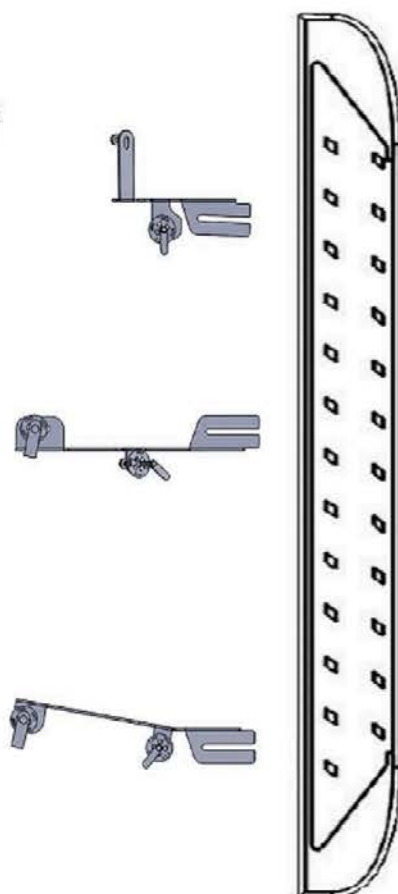
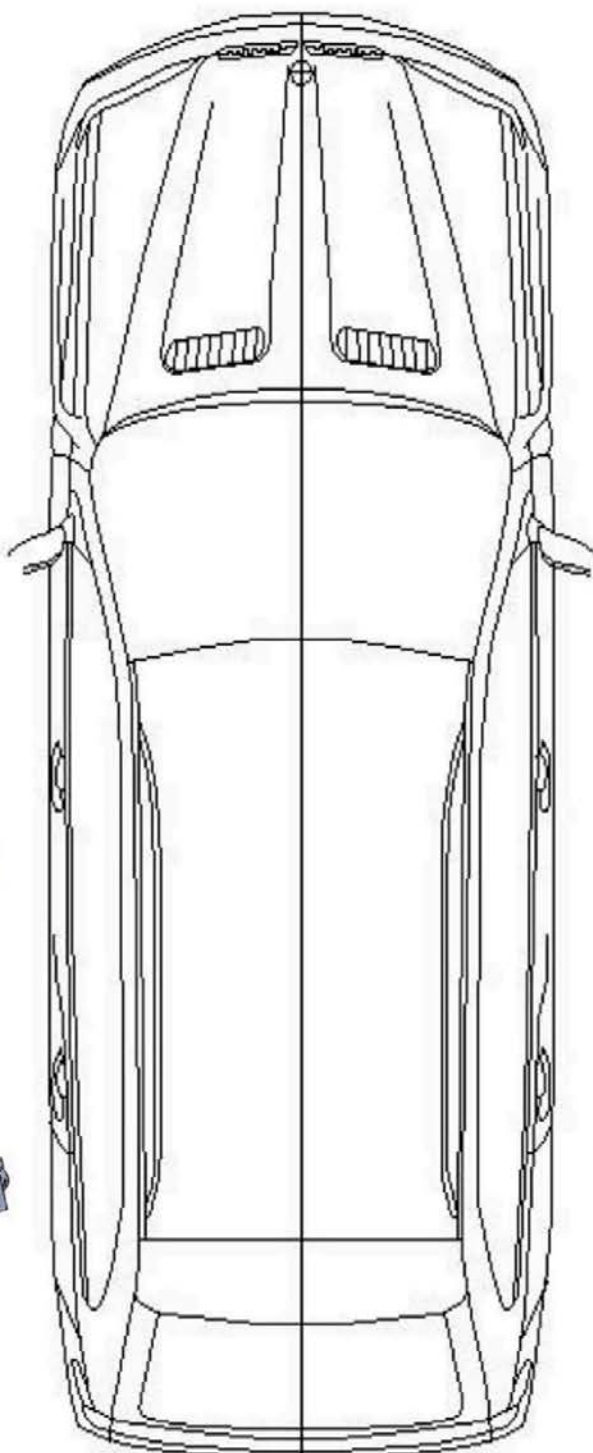
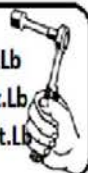


NOTE: Plastic panels must be removed and trimmed to complete installation



- 13) Locate and remove rear plug as shown on image #19 install HTC 226 as shown on image #20
- 14) Locate and remove rubber plug as shown on image #21 and #22
- 15) Insert HTC 230 as shown on image #23
- 16) Attach rear bracket as shown on image #24 do not tighten yet.
- 17) At this point you are ready to install the steps, place step onto brackets and hand tight only.
- 18) Once steps are aligned tighten brackets M8 to 18 ft lbs and M10 to 35 ft lbs do not overtighten or use power tools.
- 19) To modify plastic panels please see our video link on first page.
- 20) Once panels are modified and install proceed to tighten steps to 18 ft lbs

M6 = 8 Ft.Lb
M8 = 18 Ft.Lb
M10 = 35 Ft.Lb



WARNING: Use of powertools will void the warranty

ATTENTION PLEASE! : DO NOT TIGHTEN ALL OF THE SCREWS UNTIL ALL OF THE PARTS ARE INSTALLED.

Keep your Romik accesories clean. To prevent corrsion and to maintain your high quality finish, wax or polish regulary with quality stainless polish. Use a non abrasive type automotive wax. Any use of abrasive soaps, polishes or waxes can be detrimental to the finish.

On our website you'll find a wide variety of high-quality Running Boards & Step Bars from Romik.