

ROMIK

1013 - AUDI Q3 2009 - PRESENT

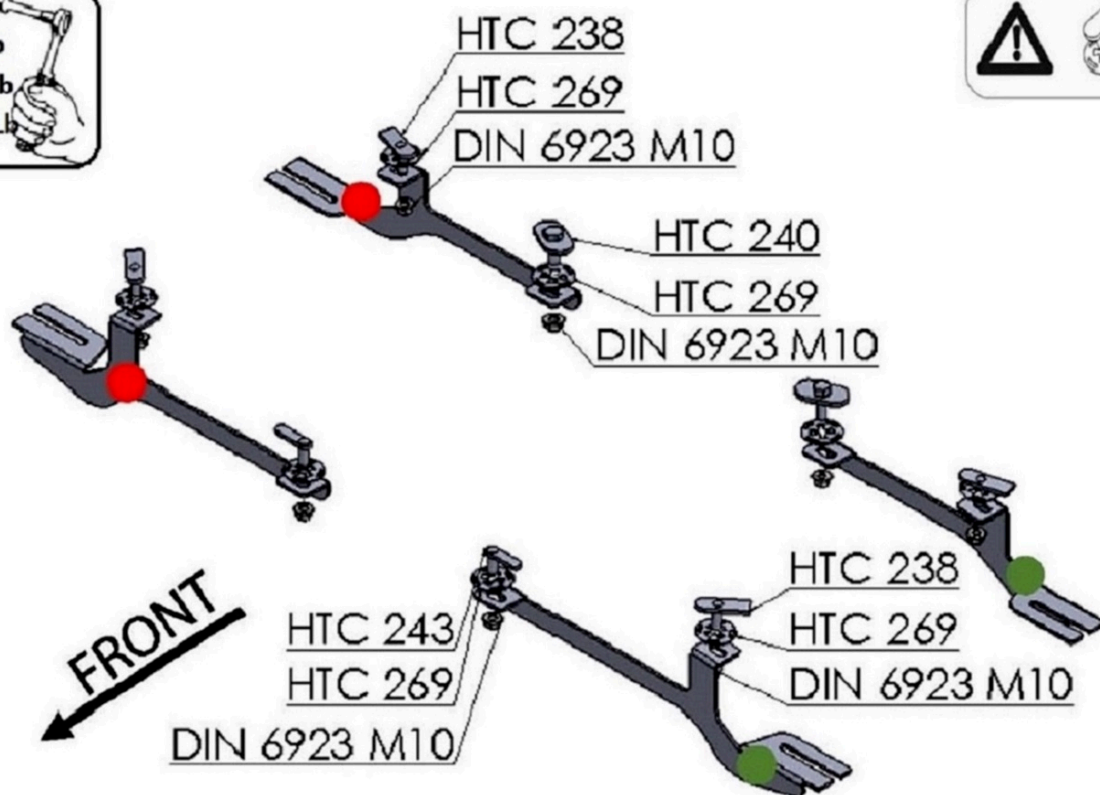
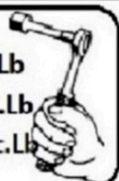


50 Min.

Installation Instructions

Attention: Plastic panels will need to be removed and trimmed

M6 = 8 Ft.Lb
M8 = 18 Ft.Lb
M10 = 35 ft.Lb



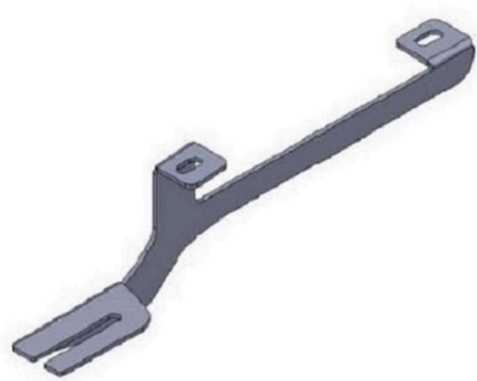
HARDWARE

4		HTC 238 - M10x30(4x20x60)
8		HTC 269 KLIPS (M10)

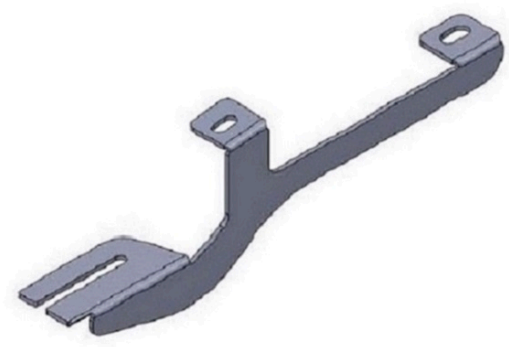
2		HTC 240 - M10X30 (5X34X60)
8		FLANGE NUT M10 DIN 6923

2		HTC 243 - M10x25(5x13x50)
---	--	------------------------------

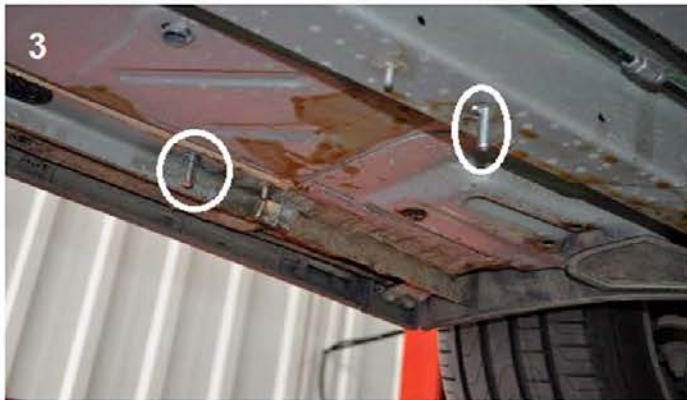
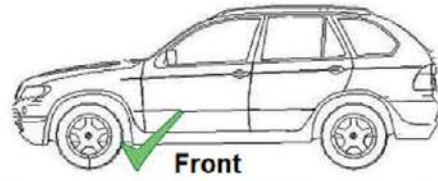
BRACKETS



(x2)

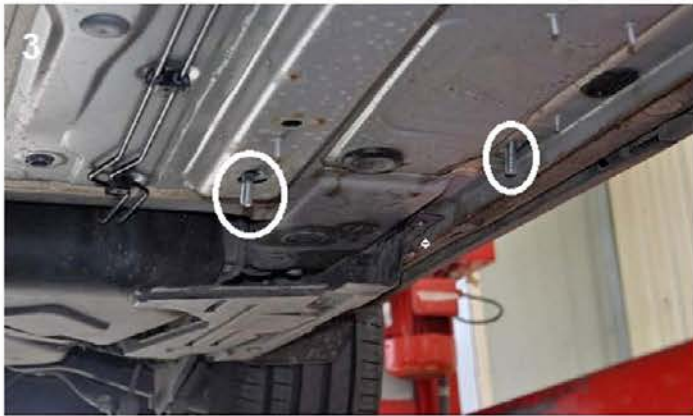
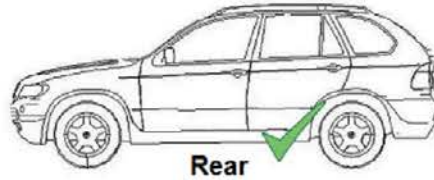


(x2)



- 1) Remove factory plastic pannels
- 2) Locate mounting points as shown on image #1
- 3) Remove plastic plug on outer mounting point as shown on image #1
- 4) Install HTC 243 and HTC 269 on inner mounting points as shown on image #2
- 5) Install HTC 238 and HTC 269 on outer mounting point as shown on image #3
- 6) Install front mounting bracket as shown on image #4. Do not tighten yet and proceed to rear area.

Attention: Plastic panels will need to be removed and trimmed


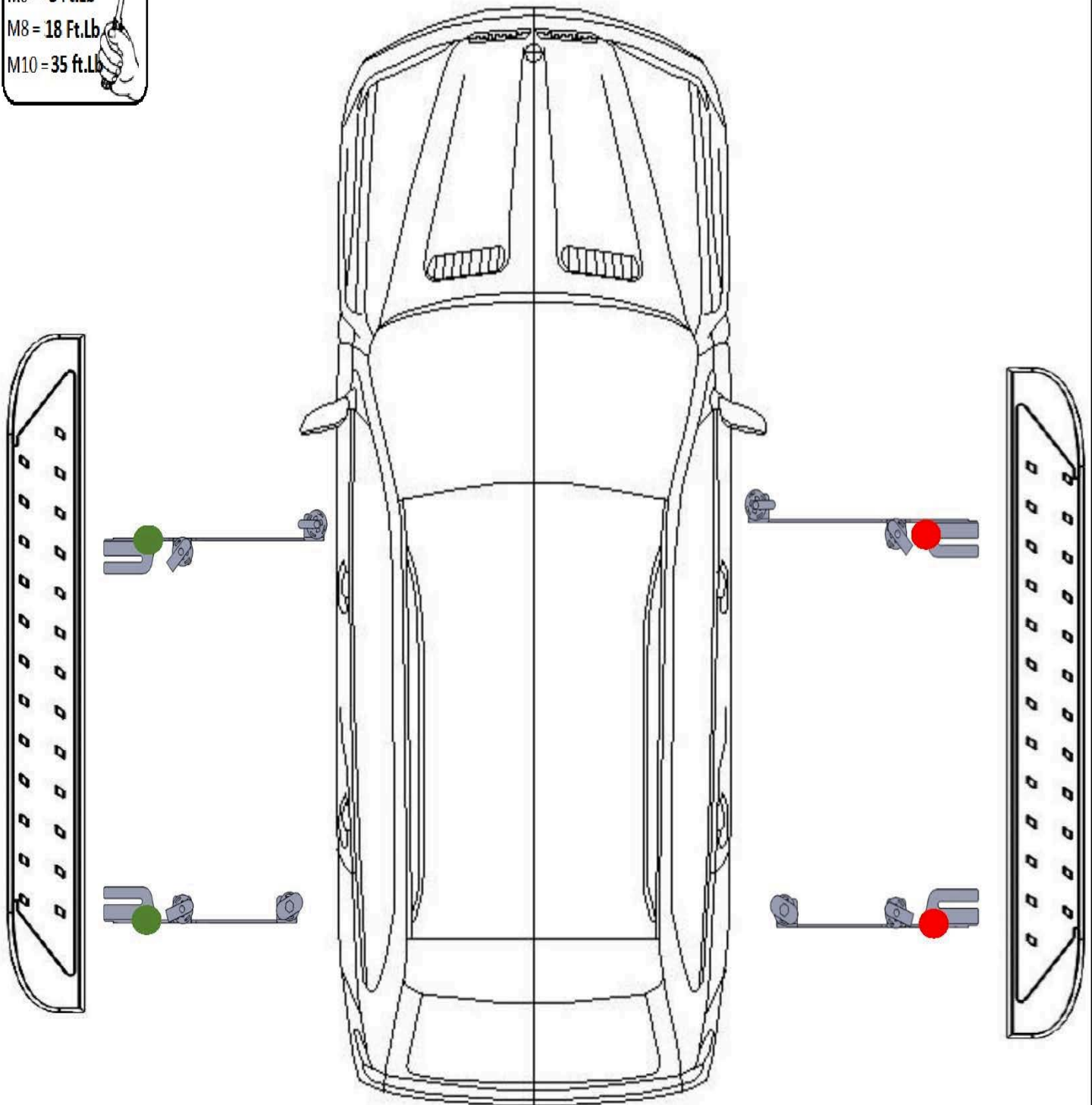


- 1) Locate rear mounting area as shown on image #1
- 2) Remove factory rubber plugs
- 3) Install inner mounting hardware HTC 240 with HTC 269 as shown on image #2
- 4) Install outer mounting hardware HTC 238 with HTC 269 as shown on image #1
- 5) Install bracket do not tighten anything yet
- 6) Proceed to loosen M8 hardware on bottom of steps
- 7) Install steps onto mounting brackets and hand tight only
- 8) Proceed to tighten mounting brackets M10 to 35 ft lbs and M8 to 18 ft lbs
- 9) Proceed to tighten step hardware M8 to 18 ft lbs
- 10) Proceed to reinstall plastic panels as shown on image #4 and #5

WARNING: Use of power tools will damage steps and void your warranty

Attention: Plastic panels will need to be removed and trimmed

M6 = 8 Ft.Lb
M8 = 18 Ft.Lb
M10 = 35 Ft.Lb

WARNING: Use of power tools will damage steps and void your warranty

ATTENTION PLEASE! : DO NOT TIGHTEN ALL OF THE SCREWS UNTIL ALL OF THE PARTS ARE INSTALLED.

Keep your Romik accessories clean. To prevent corrosion and to maintain your high quality finish, wax or polish regularly with quality stainless polish. Use a non abrasive type automotive wax. Any use of abrasive soaps, polishes or waxes can be detrimental to the finish.

On our website you'll find a wide variety of high-quality [Running Boards & Step Bars](#) from [Romik](#).