



# **ROMIK**

**2322 Hyundai Tucson 2010-2015**  
**2322 Kia Sportage 2011-2016**

Installation Instructions

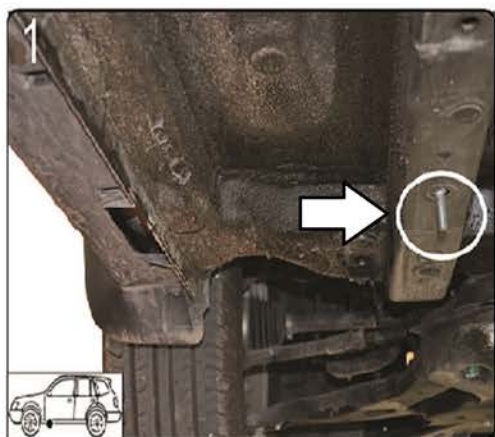
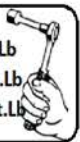


**60 Minutes**

NOTE : Before starting this installation make sure all the hardware is included and this part number matches your vehicle

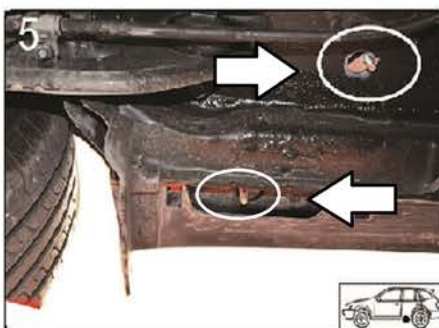
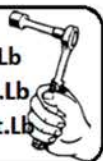
## WARNING: Use of powertools will void warranty

M6 = 8 Ft.Lb  
M8 = 18 Ft.Lb  
M10 = 35 ft.Lb



- 1) Locate front mounting area remove rubber plugs as shown on two locations
- 2) Proceed to install HTC 243 and HTC 230
- 3) Proceed to install front brackets hand tight only.

M6 = 8 Ft.Lb  
M8 = 18 Ft.Lb  
M10 = 35 ft.Lb

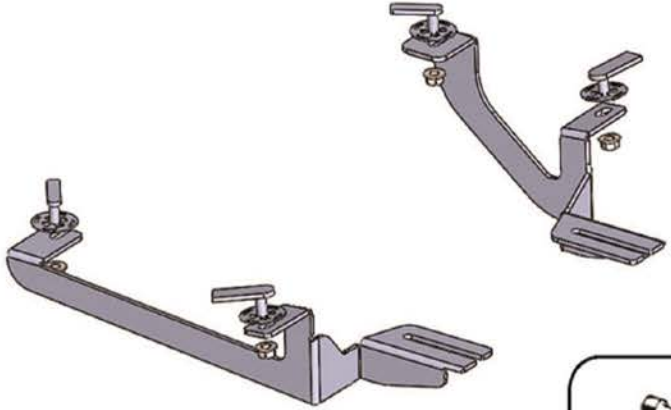
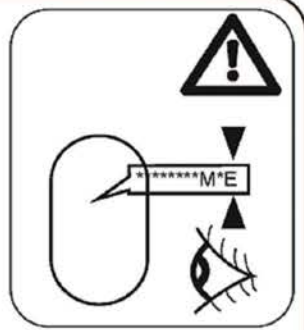
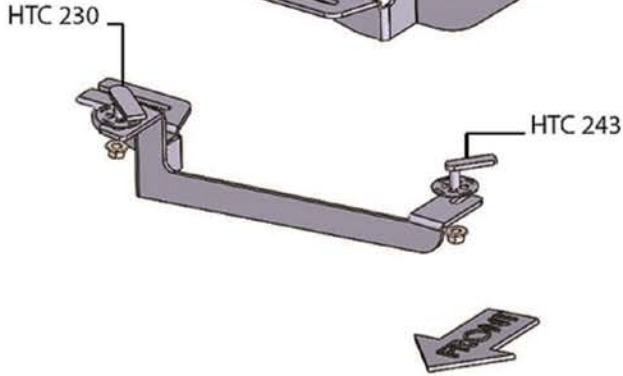
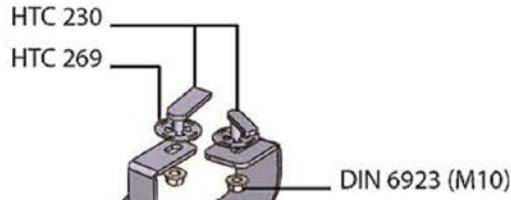


- 1) Locate rear mounting area and remove any rubber plugs
- 2) Proceed to install HTC 230 on both locations
- 3) Proceed to install rear bracket hand tight only
- 4) Proceed to install running boards hand tight only
- 5) Proceed to torque hardware on brackets M10 35 Ft.Lb M8 18 Ft.Lb
- 6) Proceed to torque hardware on running boards M8 18 Ft.Lb

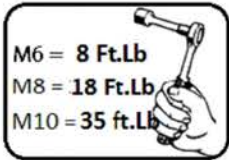
WARNING: Use of powertools will void warranty



60 Minutes



Please inspect all components before starting the installation.



WARNING: Use of power tools will void warranty

# Romik