



# **ROMIK**

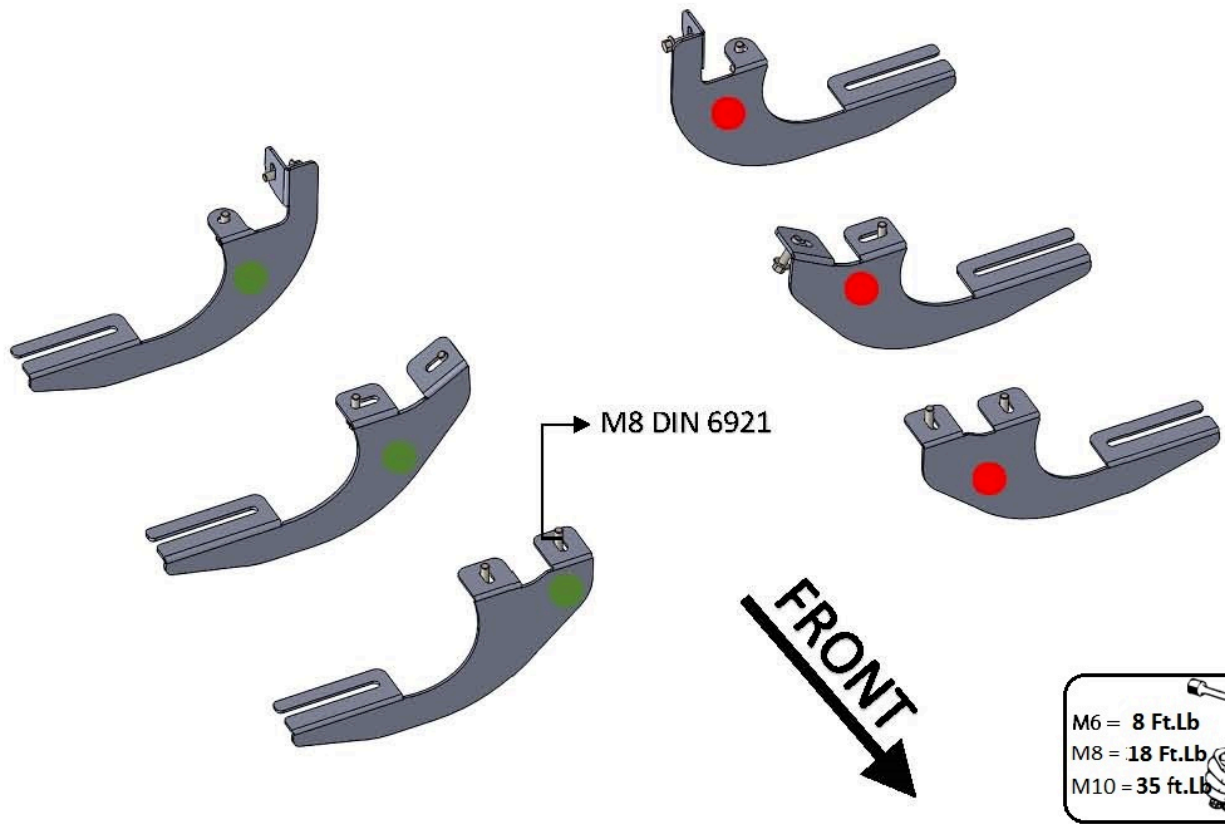
2216 - HONDA PILOT 2016-PRESENT

6010 - ACURA MDX 2014 - PRESENT


Installation Instructions



60 Minutes



**HARDWARE**

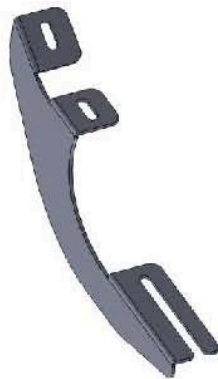
12		M8x30 FLANGE
----	---	-----------------

**WARNING:** Use of powertools will void warranty.

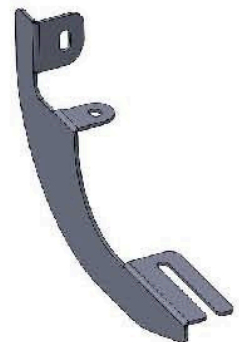
**BRACKETS**



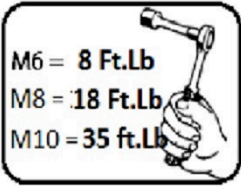
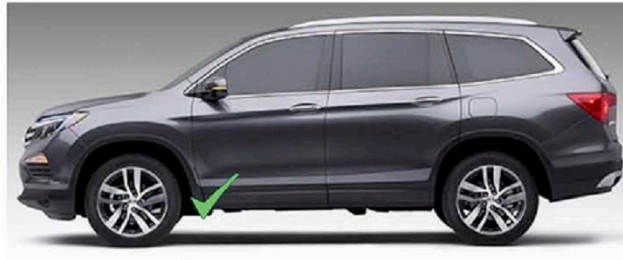
(x2)



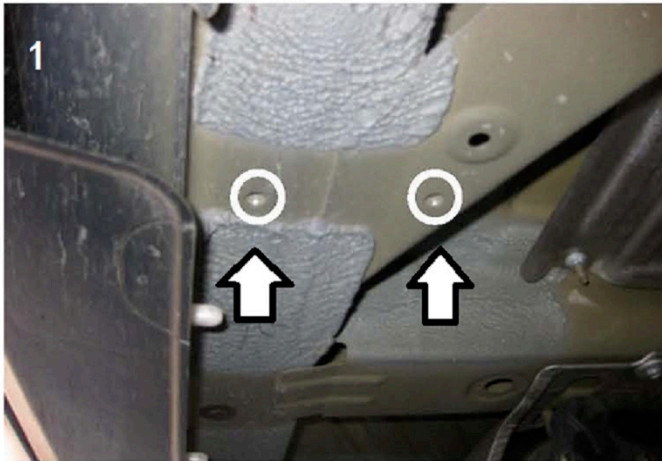
(x2)



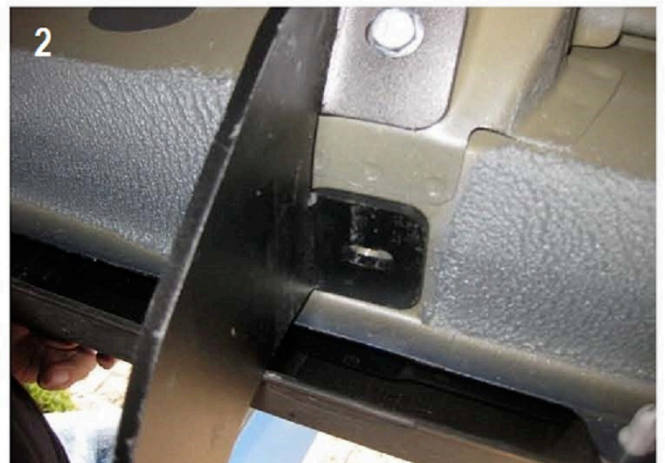
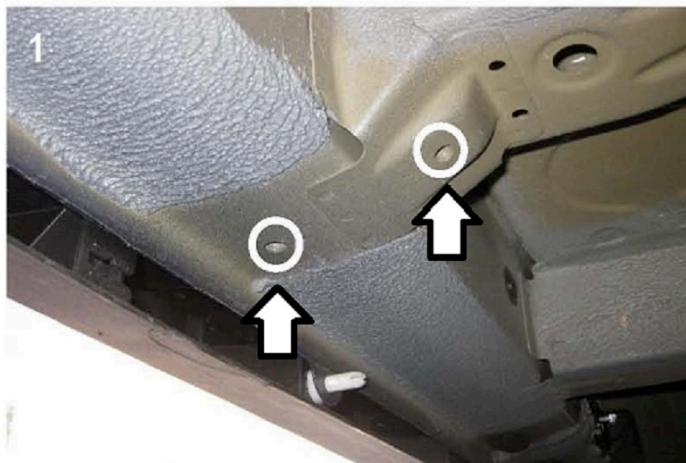
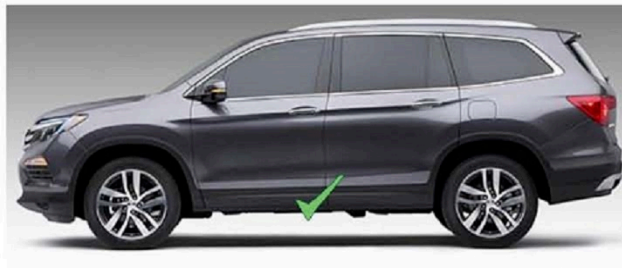
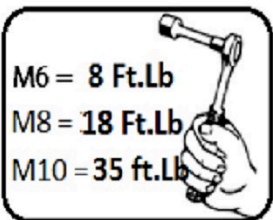
(x2)



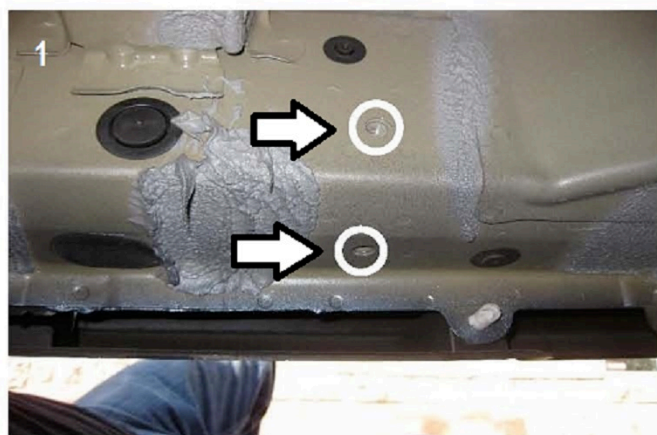
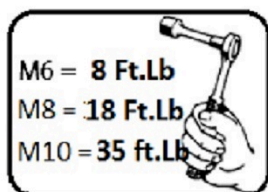
**WARNING:** Use of powertools will void warranty



- 1) Locate front bracket mounting area image #1
- 2) Install front bracket with supplied M8 hardware, do not tighten yet
- 3) Proceed to middle bracket



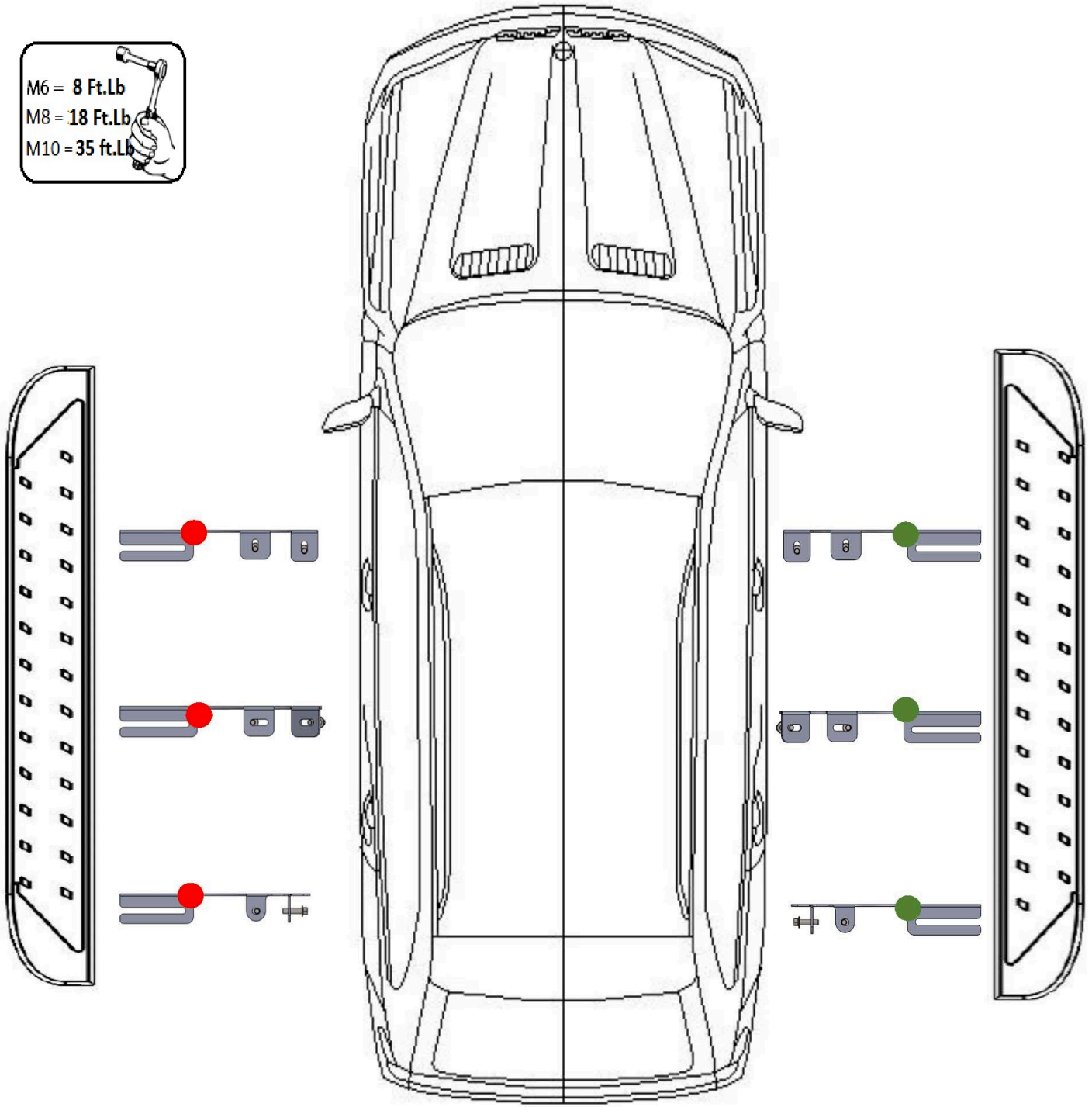
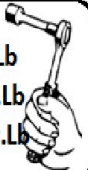
- 1) Locate middle bracket mounting area image #1
- 2) Install middle bracket with supplied M8 hardware, do not tighten yet
- 3) Proceed to rear bracket



- 1) Locate rear bracket mounting area image #1
- 2) Install rear bracket with supplied M8 hardware, do not tighten
- 3) Loosen M8 hardware on back of steps
- 4) Install steps onto brackets. Hand tight only
- 5) Proceed to tighten bracket hardware M8 to 18 ft lbs
- 6) Proceed to tighten step hardware M8 to 18 ft lbs do not overtighten as it may damage aluminum
- 7) Repeat procedure on opposite side.

**WARNING:**Use of powertools will void warranty

M6 = 8 Ft.Lb  
M8 = 18 Ft.Lb  
M10 = 35 Ft.Lb



ATTENTION PLEASE! : DO NOT TIGHTEN ALL OF THE SCREWS UNTIL ALL OF THE PARTS ARE INSTALLED.

Keep your Romik accesories clean. To prevent corrsion and to maintain your high quality finish, wax or polish regulary with quality stainless polish. Use a non abrasive type automotive wax. Any use of abrasive soaps, polishes or waxes can be detrimental to the finish.

On our website you'll find a wide variety of high-quality Running Boards & Step Bars from Romik.