




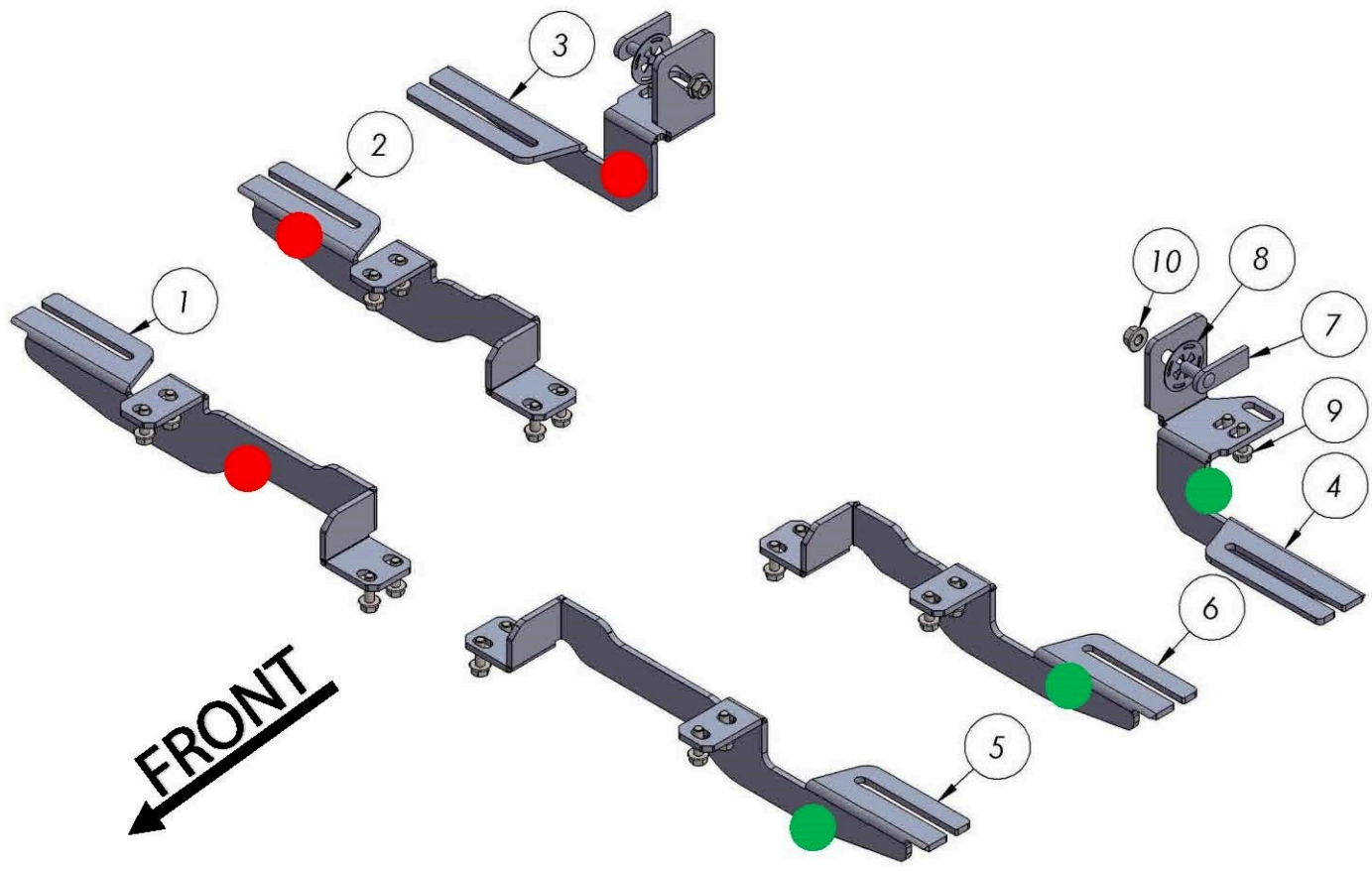
2217 – HONDA RIDGELINE 2005 - 2014

Installation Instructions

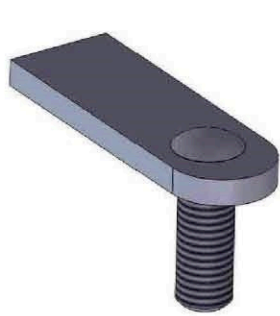


60 Minutes

M6 = 8 Ft.Lb
M8 = 18 Ft.Lb
M10 = 35 Ft.Lb

ITEM	PART NUMBER	QTY
1	2217850F0 PASSENGER	1
2	2217850C0 PASSENGER	1
3	2217850B0 PASSENGER	1
4	2217850B0 DRIVER	1
5	2217850F0 DRIVER	1
6	2217850C0 DRIVER	1
7	HTC 230 - M10x25(5x20x60)	2
8	HTC 269 - CLIPS (M10)	2
9	DIN 6921 FLANGE BOLT - M8 x 25	20
10	DIN 6923 FLANGE NUT - M10	2



7



8

WARNING: Use of power tools will void warranty

Front Bracket



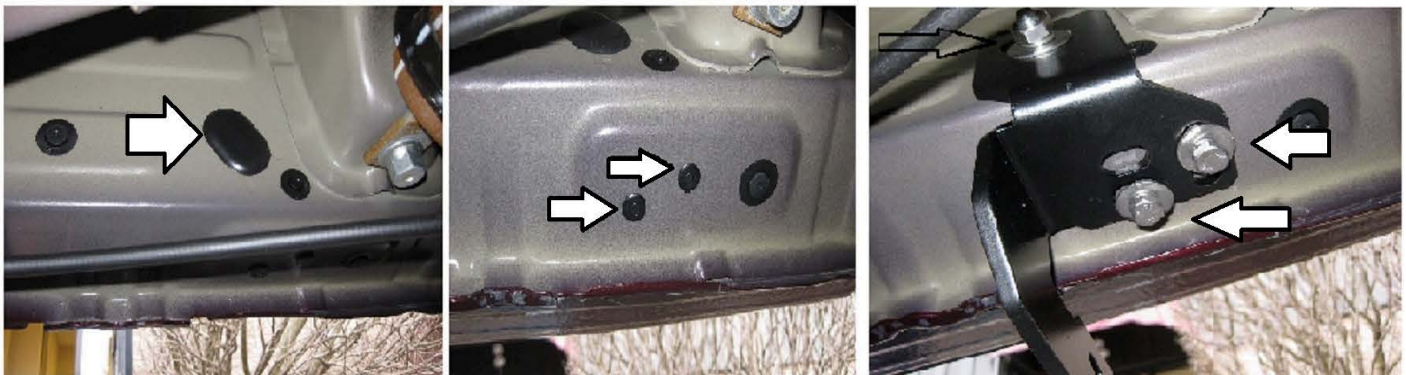
1) Locate front mount area, remove plastic pins as shown on middle picture. Install bracket #1 #5 using supplied M8 hardware. NOTE Do not tighten until running boards are lined up.

Middle Bracket



2) Locate middle mount area, remove plastic pins as shown on middle picture. Install bracket #2 #6 using supplied M8 hardware. NOTE: Do not tighten until running boards are lined up.

Rear Bracket

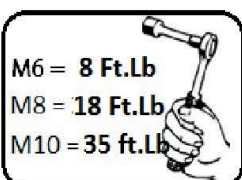


3) Locate rear mount area, remove rubber plug as show above, remove plastic pins as shown above. Insert #7 into large oval hole. #8 keeps insert from falling in so install together. Install bracket #3 #4 ussing supplied M8 hardware #9. NOTE: Do not tighten until boards are lined up.

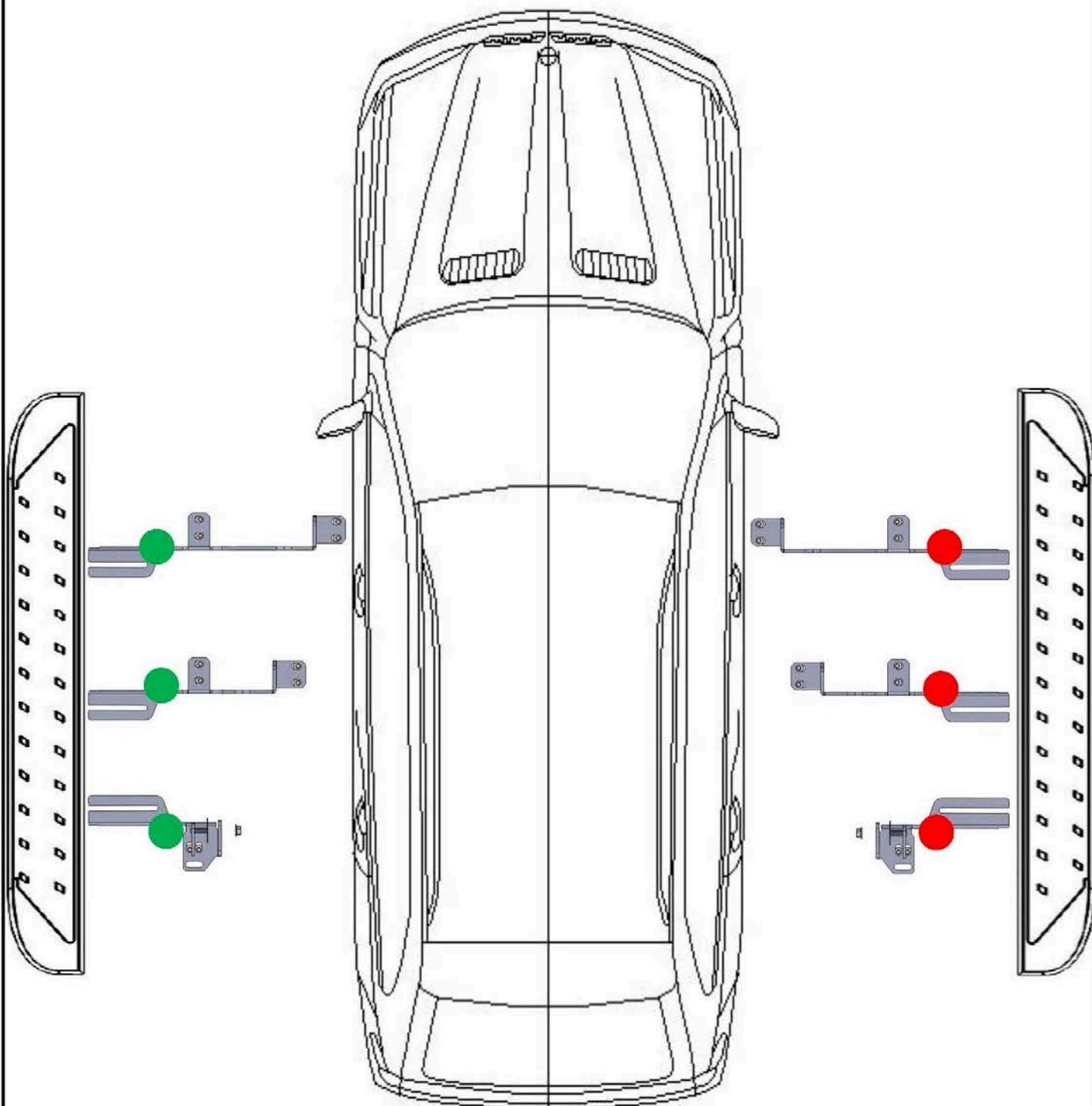
4) Install running board onto lose brackets, align running boards and only HAND tighten bottom of board so it will not move.

5) Proceed to tighten brackets to chassis starting at the front, followed by the middle and finally the rear bracket. M8 hardware to 18 ft lbs

6) Tighten running board hardware to brackets, do not overtighten as this will damage the running boards.



2217 - HONDA RIDGELINE 2005 - 2014



M6 = 8 Ft.Lb

M8 = 18 Ft.Lb

M10 = 35 Ft.Lb



WARNING: Use of power tools will void warranty