



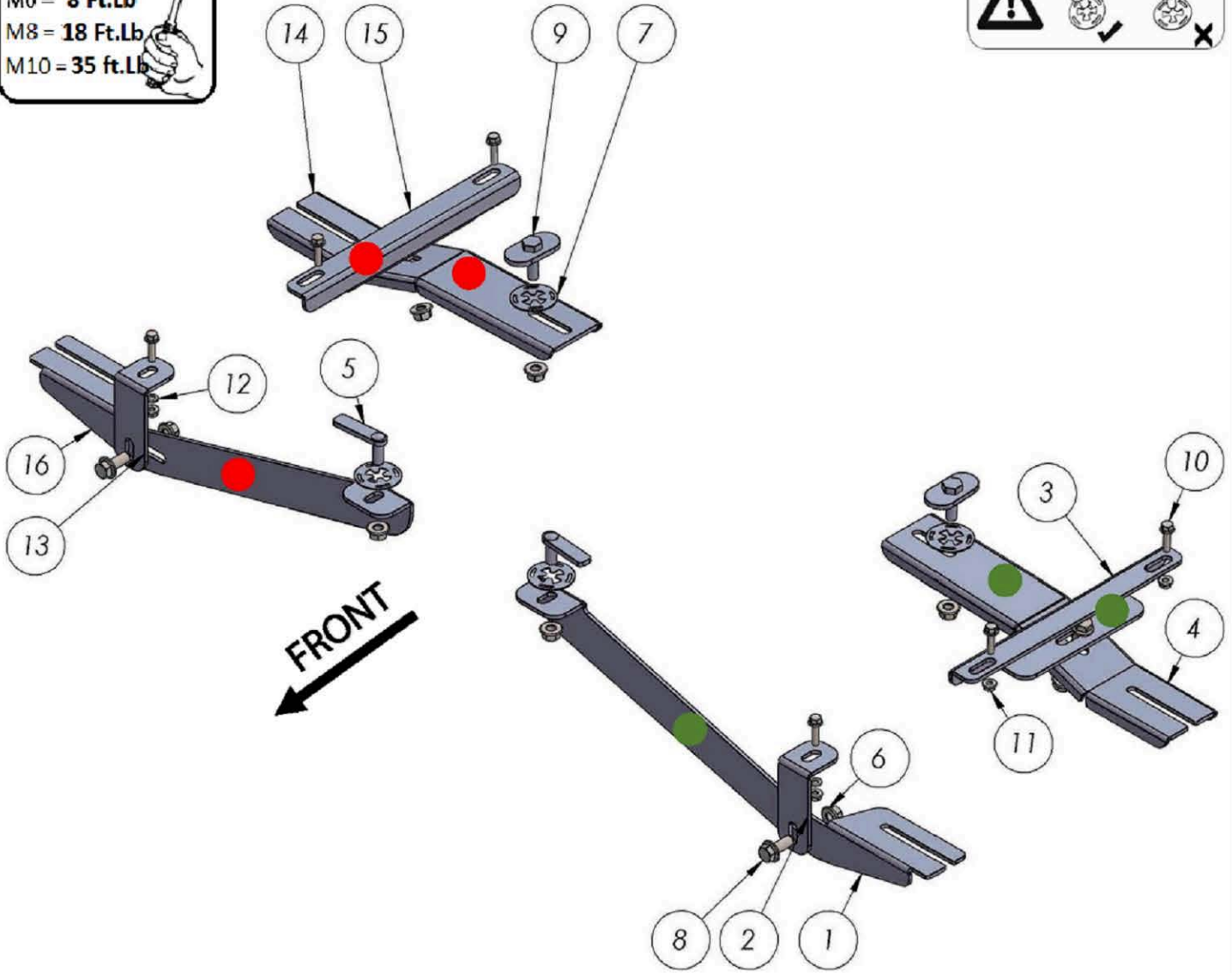
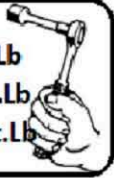
## 2617 Jeep Renegade 2015-Present

Installation Instructions

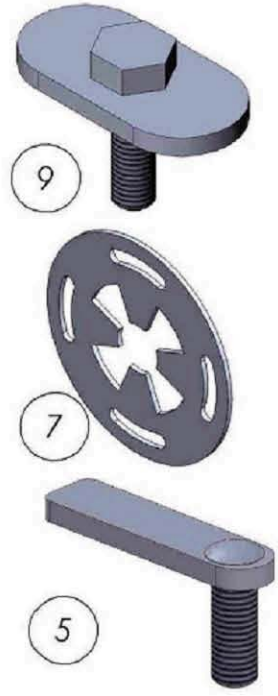


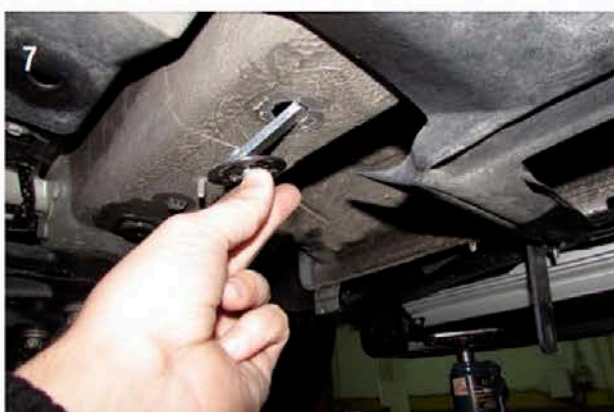
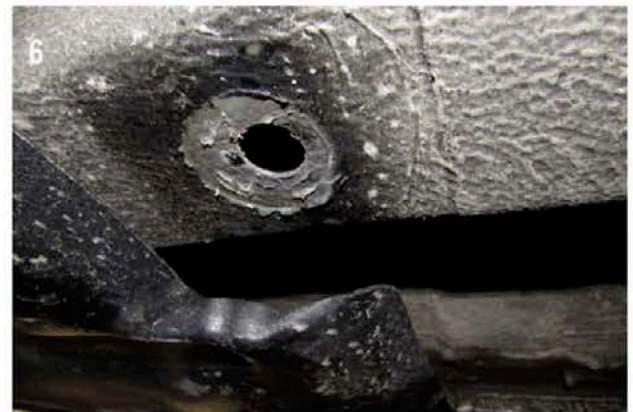
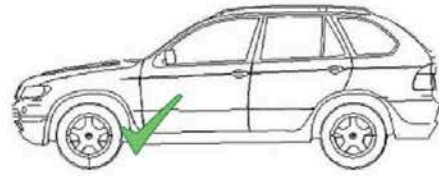
60 Minutes

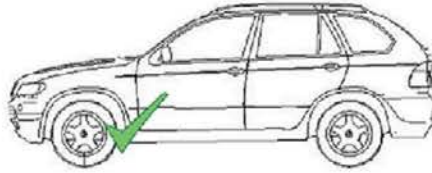
M6 = 8 Ft.Lb  
M8 = 18 Ft.Lb  
M10 = 35 ft.Lb



ITEM	PART NUMBER	QTY
1	1637850F0 DRIVER	1
2	1637850F1 DRIVER	1
3	1637850B1 DRIVER	1
4	1637850B0 DRIVER	1
5	HTC 262 - M10X30 (5X15X60)	2
6	DIN 6923 FLANGE NUT - M10	8
7	HTC 269 - CLIPS (M10)	4
8	DIN 6921 FLANGE BOLT - M10 x 25	4
9	HTC 240 - M10X30 ORTADAN DELİKLİ YAPRAK CIVATA (5X34X60)	2
10	DIN 6921 FLANGE BOLT - M6 x 25	6
11	DIN 6923 FLANGE NUT - M6	6
12	DIN 125 WASHER - M6	2
13	1637850F1 PASSENGER	1
14	1637850B0 PASSENGER	1
15	1637850B1 PASSENGER	1
16	1637850F0 PASSENGER	1

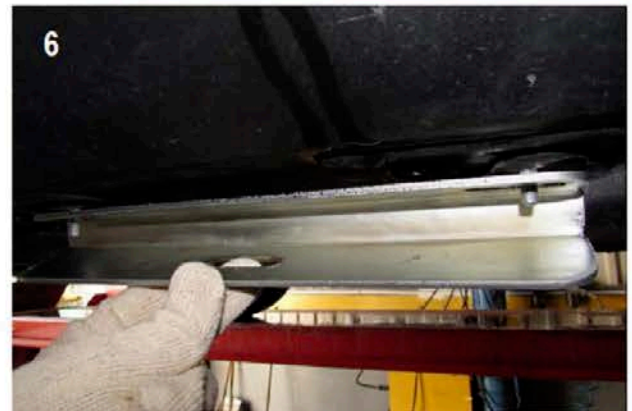
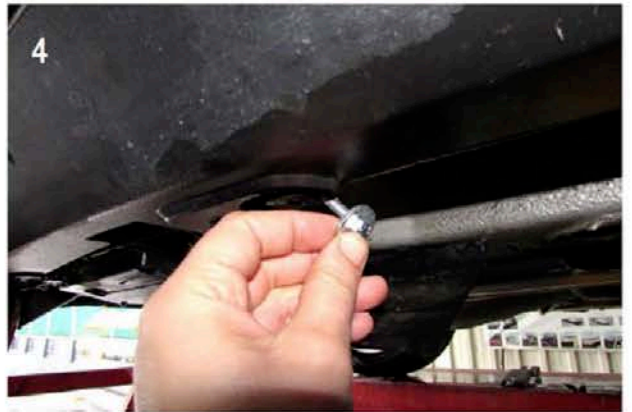
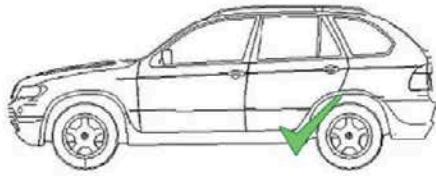


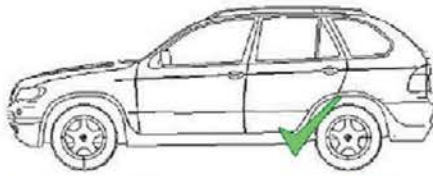




- 1) Locate front mounting position, remove factory plastic bolt which will not be used image #1
- 2) Insert supplied M6 bolt onto front hole position as shown on image #2
- 3) Attach front support "L" bracket as shown on image #3 and image #4 do not tighten
- 4) Locate rubber plug on chassis and remove to gain access to mounting location image #5 and image #6
- 5) Insert HTC 262 and HTC 269 as shown on image #7 and image #8
- 6) Attach main front bracket as shown on image #9 do not tighten yet
- 7) Connect "L" support bracket to main bracket using M10 hardware do not tighten yet.

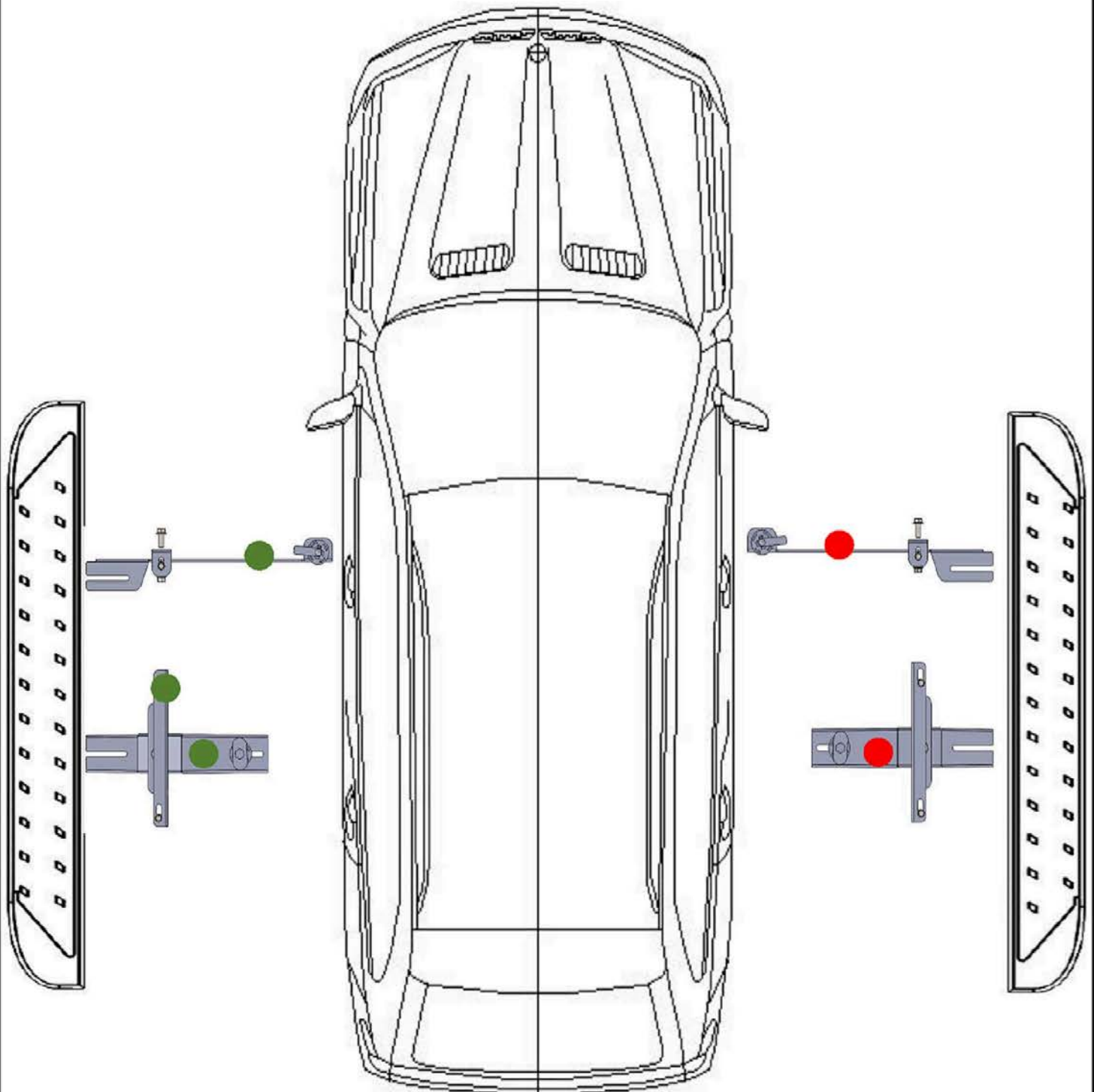
Proceed to rear bracket installation.





- 1) Locate rear mounting points as shown on image #1 and image #4
- 2) Remove factory plastic hold-downs and dispose Image #2 (2 per side)
- 3) Insert M6 bolt as shown on image #3 and image #4 place plastic panels back in place image #5
- 4) Attach support bracket as show on image #6
- 5) Locate rear main support area and remove rubber plug image #9 and image #10
- 6) Insert HTC 240 with HTC 269 as shown on image #11
- 7) Attach rear bracket as shown on image#12 do not tighten
- 8) Attach rear main bracket to extra support as shown on image#13 and image#14 do not tighten
- 10) Loosen M8 hardware on steps and slide onto brackets, align and set in place and hand tight only
- 11) Proceed to torque M10 hardware to 35 ft lbs, M8 to 18 ft lbs and M6 to 8 ft lbs on brackets.
- 12) Proceed to torque M8 hardware to 18 ft lbs on steps, do not use powertools as this may damage the Steps
- 13) Repeat procedure on opposite side.

**Warning: Do not use powertools as it will void the warranty**



**ATTENTION PLEASE! : DO NOT TIGHTEN ALL OF THE SCREWS UNTIL ALL OF THE PARTS ARE INSTALLED.**

Keep your Romik accessories clean. To prevent corrosion and to maintain your high quality finish, wax or polish regularly with quality stainless polish. Use a non abrasive type automotive wax. Any use of abrasive soaps, polishes or waxes can be detrimental to the finish.

On our website you'll find a wide variety of high-quality [Running Boards & Step Bars](#) from [Romik](#).