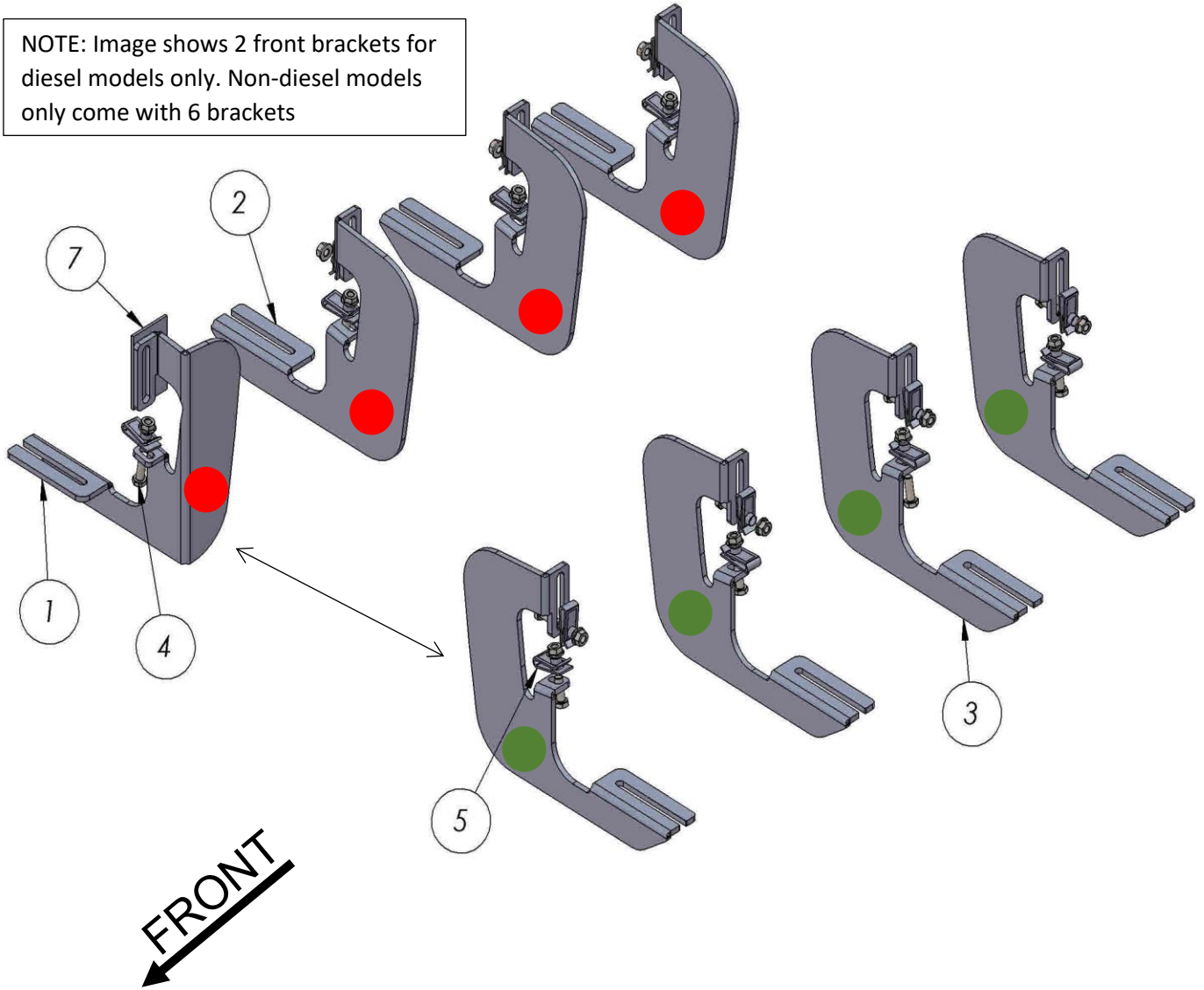


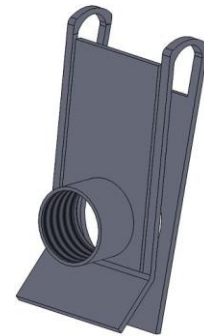


1425-SILVERADO 1999-Present

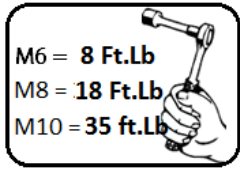
NOTE: Image shows 2 front brackets for diesel models only. Non-diesel models only come with 6 brackets



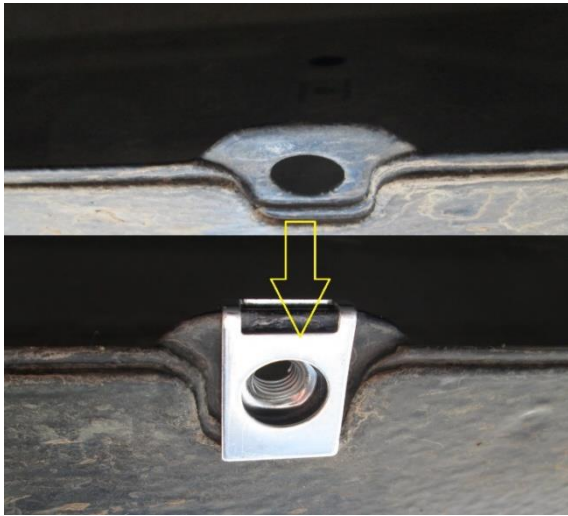
ITEM	PART NUMBER	QTY
1	1425850F0 PASSENGER	1
2	1425850C0B0 PASSENGER	3
3	SILVERADOF0C0B0 DRIVER	4
4	DIN 933 BOLT M8 x 25	15
5	M8 U-NUT	15
6	DIN 6923 FLANGE NUT M8	15
7	SPONGE	1



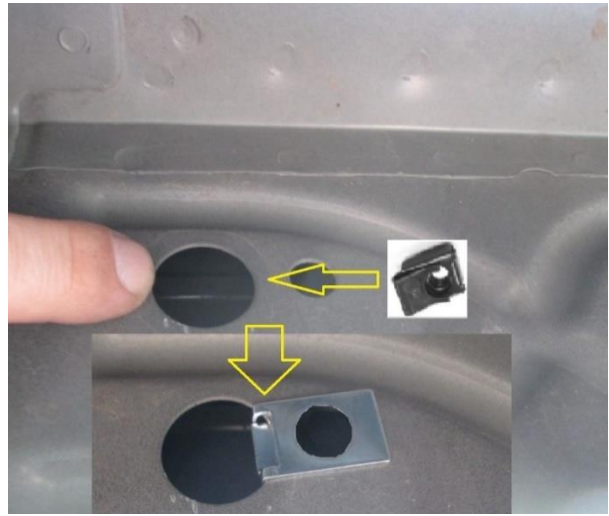
7



NOTE: This procedure is the same for all brackets.



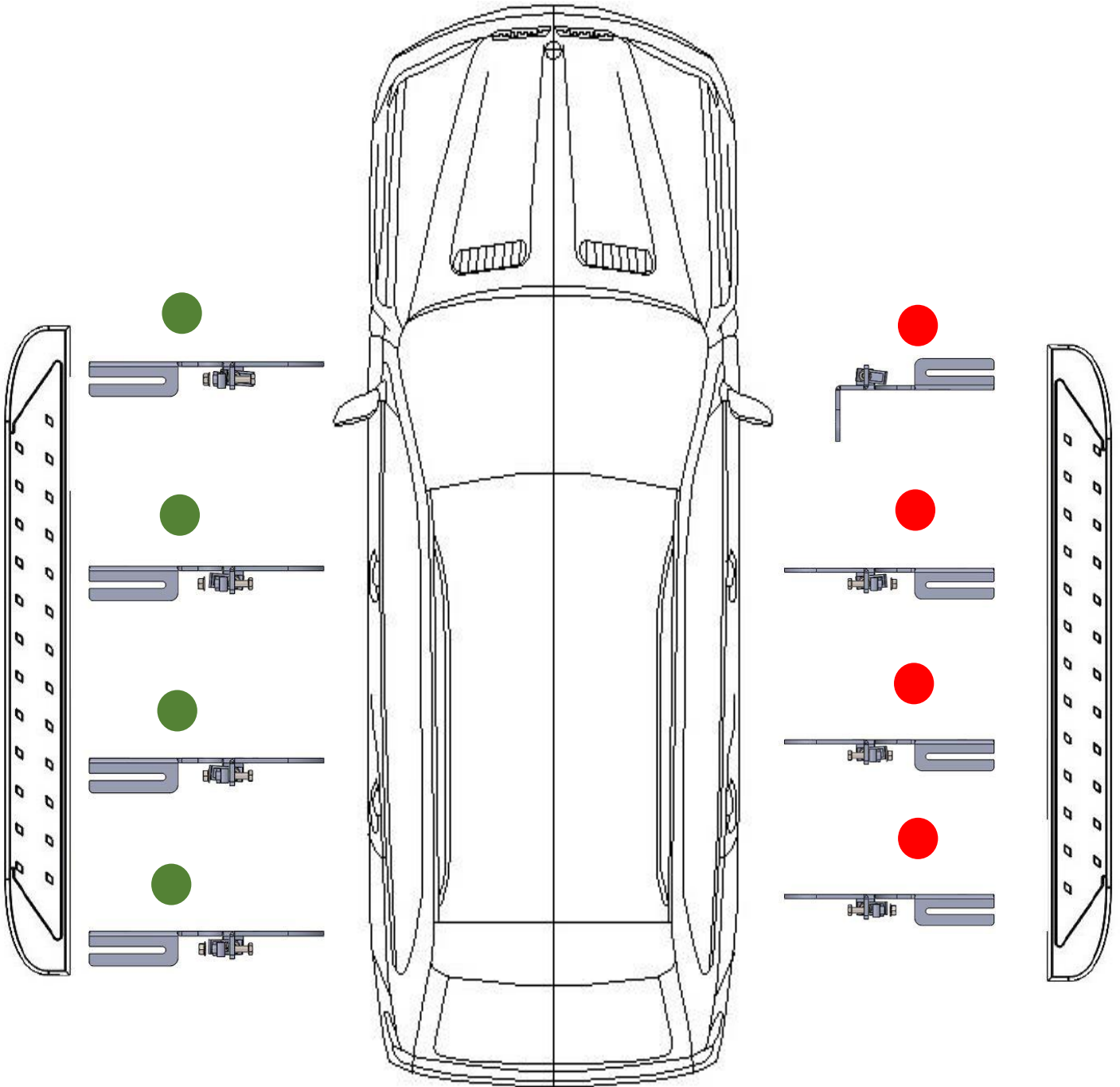
1) Insert M8 Nut on vehicle pinch weld



2) Insert M8 Nut on vehicle as shown above



- 4) Install brackets as shown above using supplied hardware. Do not tighten anything yet.
- 5) Install running boards, align them and hand tighten only.
- 6) Once running boards are align, proceed to tighten mounting brackets to vehicle to 18 ft.lb
- 7) Tighten running boards to 18 Ft.Lb **WARNING:**Use of power tools will void warranty



## **WARNING: Use of powertools will void warranty**

ATTENTION PLEASE! : DO NOT TIGHTEN ALL OF THE SCREWS UNTIL ALL OF THE PARTS ARE INSTALLED.

Keep your Romik accesories clean. To prevent corrsion and to mantain your high quality finish, wax or polish regulary with quality stainless polish. Use a non abrasive type automotive wax. Any use of abrasive soaps, polishes or waxes can be detrimental to the finish.

On our website you'll find a wide variety of high-quality Running Boards & Step Bars from Romik.