



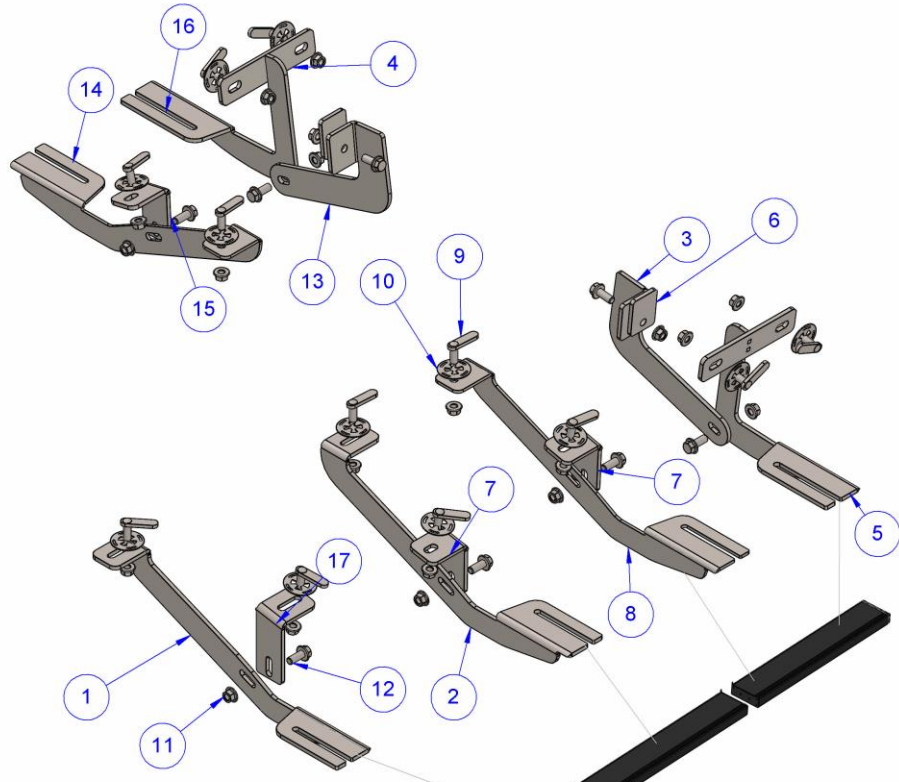
Installation Instructions

Part No. 1619-2D/3D
Product: Romik Connect Running Boards
Application: Dodge RAM ProMaster 2014+
Level of Difficulty: 1 2 3 4 5
Installation Time: 90 Min

REV 1 02/11/20

Hardware	Torque Specifications
M6 Bolt	3 ft.-lbs.
M8 Bolt	7 ft.-lbs.
M10 Bolt	16 ft.-lbs.
M12 Bolt	28 ft.-lbs.

ATTENTION: Use correct torque settings to avoid damaging the running boards and or mounting brackets. Failure to do so will void your warranty.



ITEM NO.	PART NUMBER	QTY.
1	1631858B0-P	1
2	1631858C2-P	1
3	1631850F1-P	1
4	1631850F3-P	2
5	1631850F0-P	1
6	1631850F2-P	2
7	1631850C0-D	2
8	1631850C1-D	1
9	HTC 243 - M10x25(4x12x50)	12
10	HTC 269 - CLIPS (M10)	12
11	M10 Flange Nut	20
12	M10 x 25 Flange Bolt	8
13	Mirror1631850F1-P	1
14	Mirror1631850C1-D	1
15	Mirror1631850C0-D	1
16	Mirror1631850F0-P	1
17	1631858BC1-P-2	1

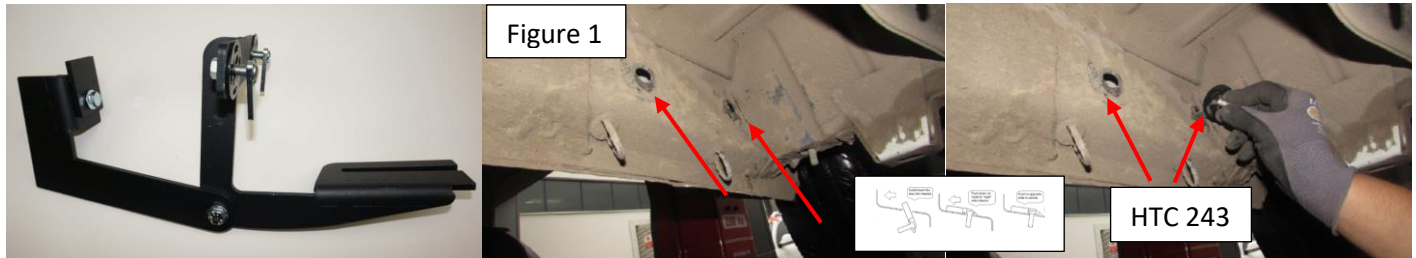


Installation Instructions 1619-2D / 3D Bracket Kit

Video
Installation
Instruction:

Step 1: Separate brackets and hardware as per 1st page of this installation manual. **Please note bracket positioning for Long Wheel Base 5,8,2,1 and Short Wheel Base models 5,8,1,2.**

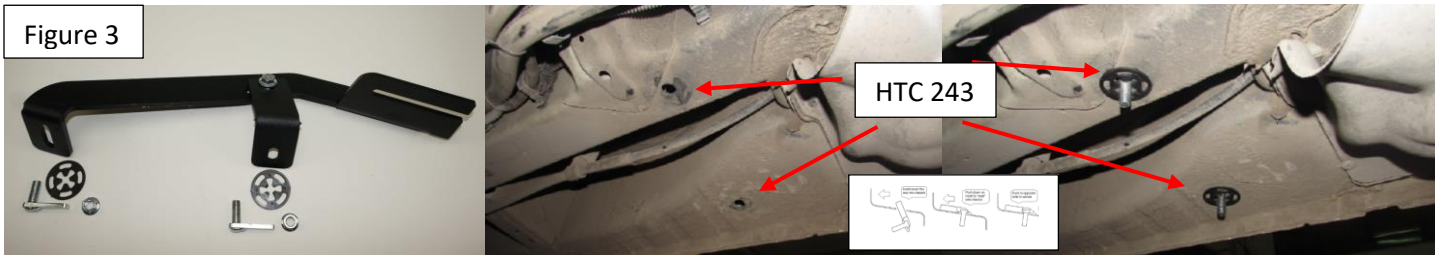
Step 2: Driver's side front, remove factory rubber plugs as shown on Figure 1 **TIP: Try to preassemble the bracket for easier placement.** Install provided HTC 243



Step 3: Bring pre-assembled bracket and install onto HTC 243 and secure, push clamp end onto the vehicle chassis lip push up and secure Figure 2. Do not tighten at this time since the board will help level the bracket.



Step 4: Pre-assemble Driver's rear bracket as shown Figure 3 Install supplied HTC 243 as shown

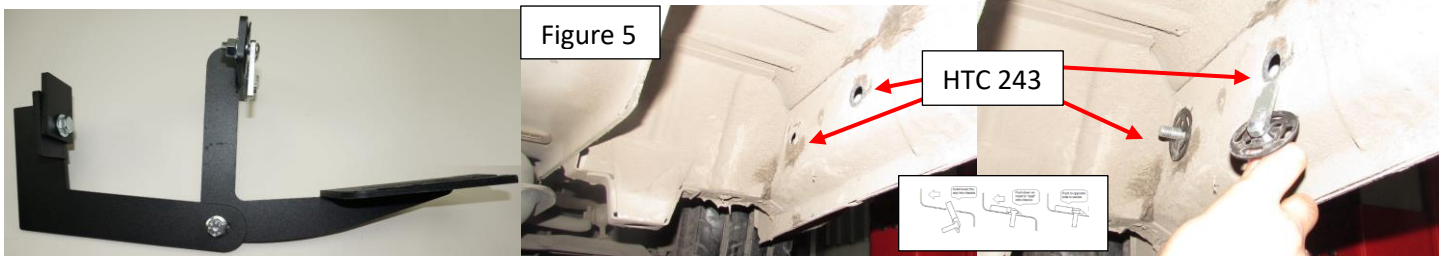


Step 5: Bring pre-assembled bracket and install onto HTC 243 Figure 4 and secure Do not tighten at this time since the board will help level the bracket.



Installation Instructions 1619-2D / 3D Bracket Kit

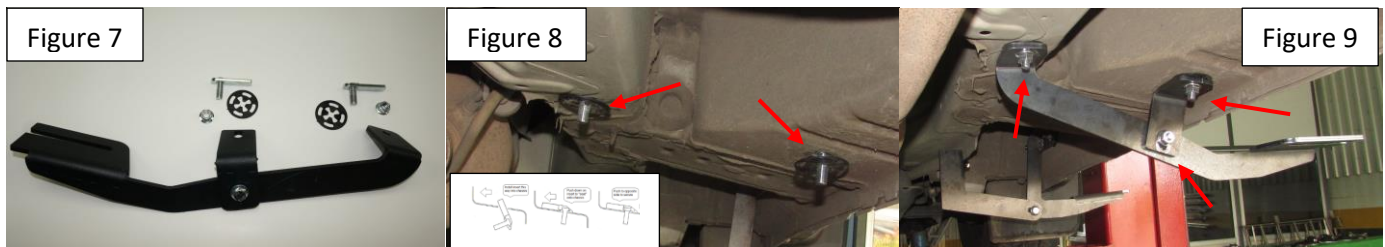
Step 6: Pass Front, remove factory rubber plugs as shown on Figure 5 **pre-assemble the bracket for easier placement.** Install provided HTC 243



Step 7: Bring pre-assembled bracket and install onto HTC 243 and secure, push clamp end onto the vehicle chassis lip push up and secure Figure 6. Do not tighten at this time since the board will help level the bracket.

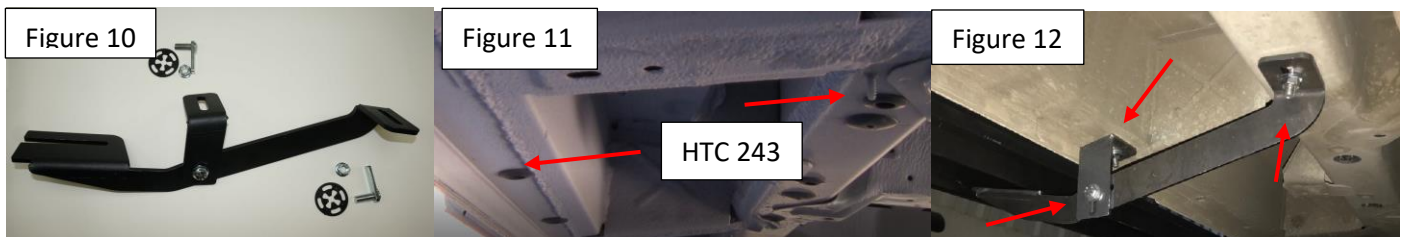


Step 8: Pre-assemble bracket as shown on Figure 7, install provided HTC 243 as shown on Figure 8. Install pre-assembled bracket as shown on Figure 9. Do not tighten



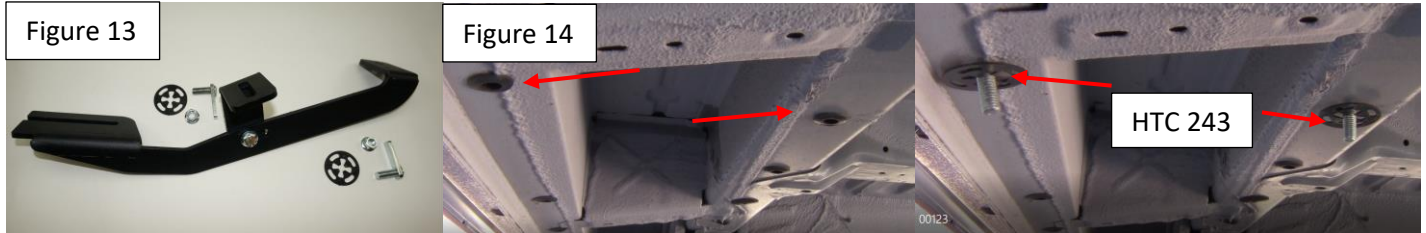
NOTE: If you are only installing front driver and front passenger running boards please proceed to Step 10 and install the running boards.

Step 9: Pre-assemble Pass 3rd bracket Figure 10, install HTC 243 on shown locations Figure 11. Attach pre-assembled bracket as shown on Figure 12. Do not tighten **Please note bracket positioning for Long Wheel Base 5,8,2,1 and Short Wheel Base models 5,8,1,2.**



Installation Instructions 1619-2D / 3D Bracket Kit

Step 8: Pre-assemble Pass 3rd bracket Figure 13, install HTC 243 on shown locations Figure 14. Attach pre-assembled bracket as shown on Figure 15. Do not tighten **Please note bracket positioning for Long Wheel Base 5,8,2,1 and Short Wheel Base models 5,8,1,2.**



Step 9: Install pre-assembled 3rd bracket as shown on Figure 15 Do not tighten



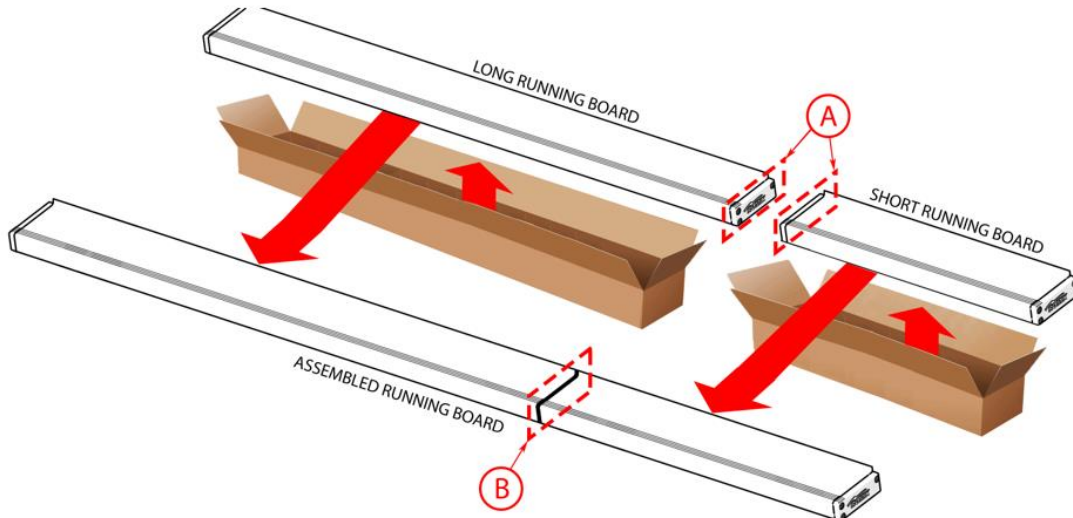
Step 10: Proceed to last page of this manual for running board install instructions and torque values

Thank you for choosing Romik.

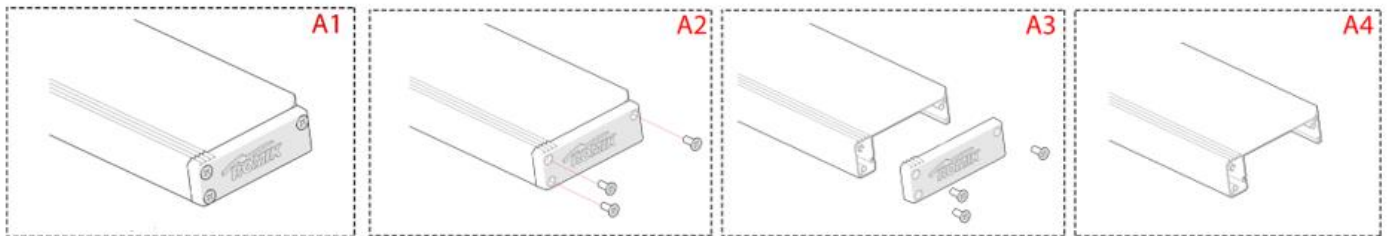
ROF / ROB / RPD 2 PC Romik Connect instructions

Please follow these steps to successfully “join” the 2 PC running boards together.

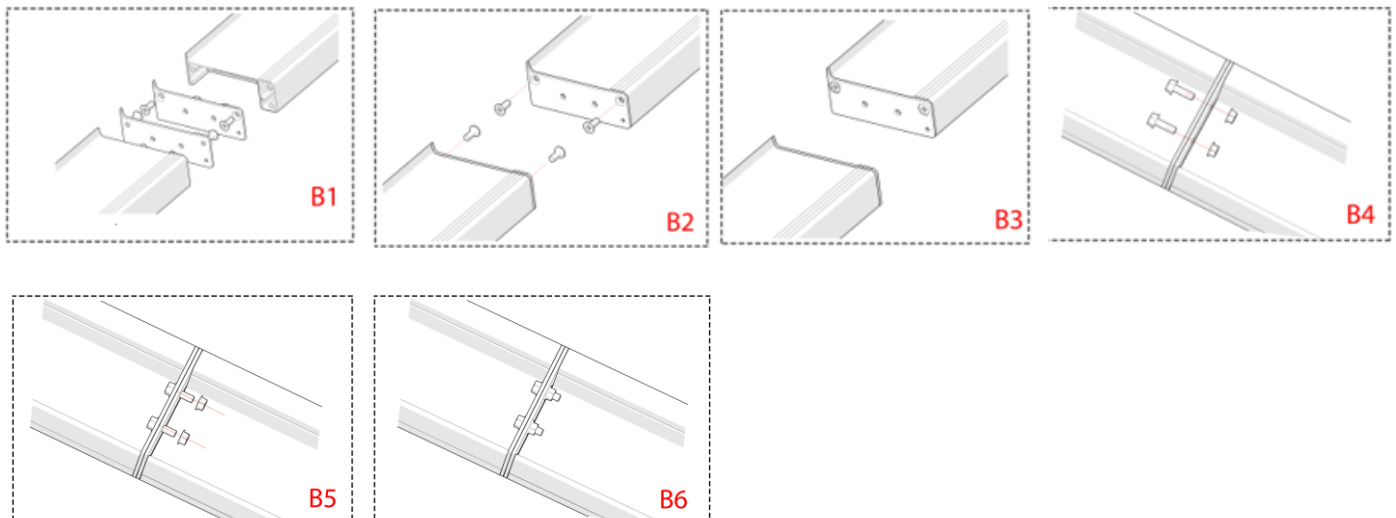
Step 1: Remove products from box and placed on a soft surface to avoid scratching.



Step 2: Remove plastic endcap as shown on Figure A1 – A4 keep screws as they will be re-used.

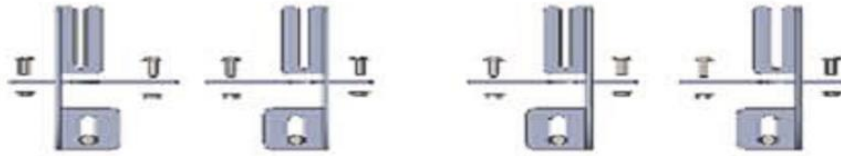
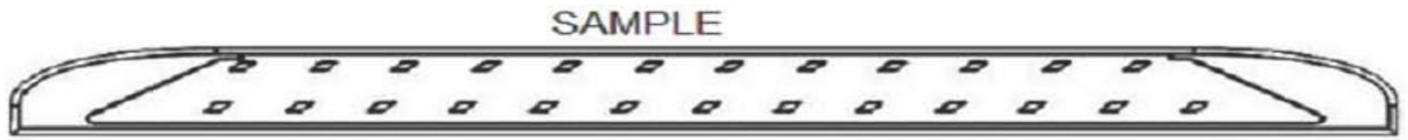


Step 3: Remove Romik Connect plate and assemble as show on Figure B1 – B3 using original screws. Join two running boards together using supplied M8 bolts torque to 7 ft lbs.



Step 4: Install running boards as per last page of this manual.

Running Board Installation Instructions



RAL / RB2 / REC / RCV / RZR



ROB / ROF / RPD

- 1) Flip your Romik running boards onto a flat surface, make sure to place the running boards on a towel or cardboard in order to protect the surface Figure 1.
- 2) Loosen the M8 bolts on back of your running boards Figure 2. Depending on your model there will be either 6 or 8 bolts installed per side.
- 3) Once your brackets have been installed, place the running board onto the brackets as shown on Figure 3.
- 4) Adjust running boards, centering on vehicle. Hand tight M8 hardware on running boards.
- 5) Follow the torque procedures, torque M8 hardware to **7 ft-lbs** using a torque wrench.
- 6) Cleaning and maintaining your running boards is important, apply a light coat of a quality carnauba wax at least 2X per year. Wash often with mild soap and make sure to remove all soap residue. Many car automatic carwashes use a strong soap, make sure to use enough water to remove all residue.

Discover other running boards and step bars on our website.