



Installation Instructions

REV 3 01/23/20

Part No. 1432

Product: Running Boards

Application:

Chevy Silverado 2019+

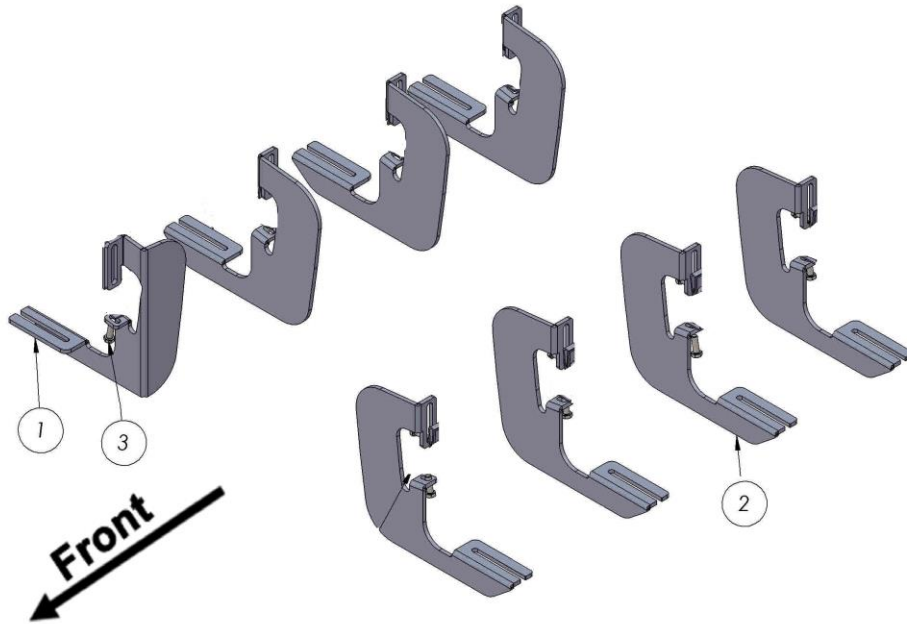
GMC Sierra 2019+

Level of Difficulty: 1 2 3 4 5

Installation Time: 60 Min.

| Hardware | Torque Specifications |
|----------|-----------------------|
| M6 Bolt | 3 ft-lbs. |
| M8 Bolt | 7 ft-lbs. |
| M10 Bolt | 16 ft-lbs. |
| M12 Bolt | 28 ft-lbs. |

ATTENTION: Use correct torque settings to avoid damaging the running boards and or mounting brackets.



| ITEM | PART NUMBER | QTY |
|------|---------------------------|-----|
| 1 | SILVERADOF0C0BP PASSENGER | 4 |
| 2 | SILVERADOF0C0BDDRIVER | 4 |
| 3 | DIN 933 BOLT M8 x 25 | 16 |

- Regular Cab uses 4 brackets
- Extended Cab uses 6 brackets
- Crew Cab uses 8 brackets

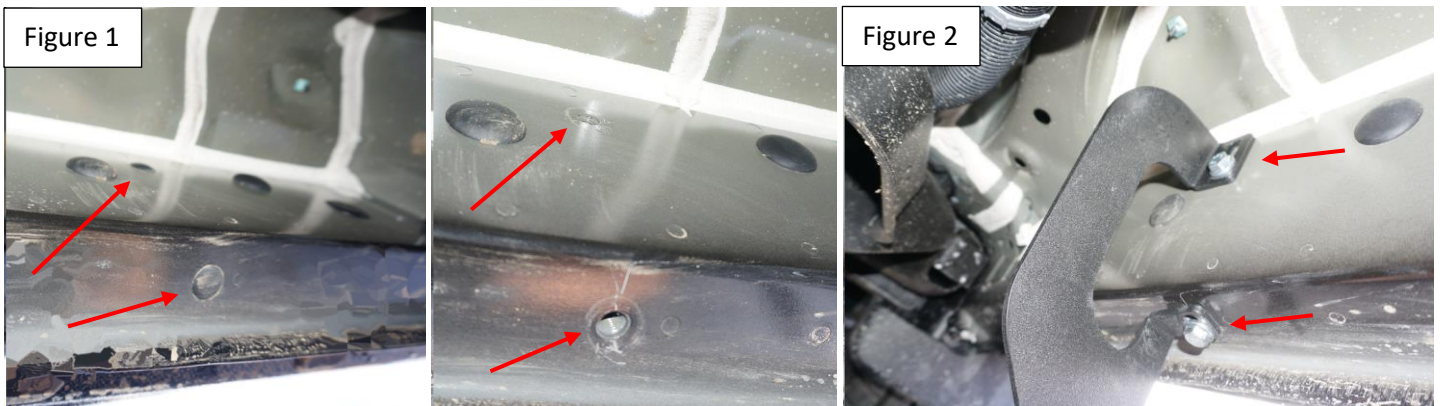
Installation Instructions 1432 Bracket Kit

NOTE: Regular cab uses 4 brackets, Extended cab uses 6 brackets, Crew cab uses 8 brackets.

Step 1: Locate front mounting locations and hardware as per 1st page of this installation manual

Step 2: Remove factory rubber plugs as shown on Figure 1.

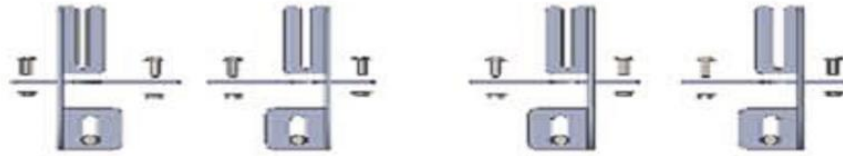
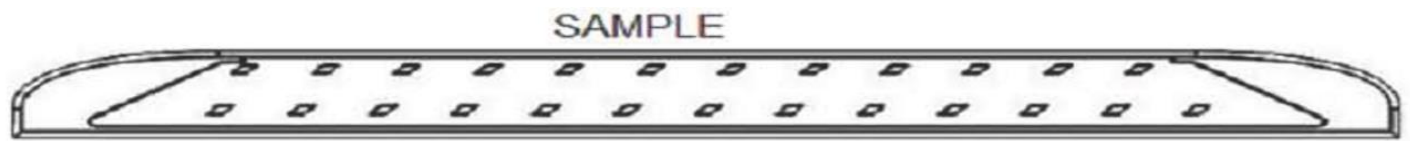
Step 3: Install brackets using supplied M8 hardware Figure 2. Do not tighten



Step 4: Proceed to last page of this manual for running board install instructions and torque values

Thank you for choosing Romik

Running Board Installation Instructions



RAL / RB2 / REC / RCV / RZR



ROB / ROF / RPD

- 1) Flip your Romik running boards onto a flat surface, make sure to place the running boards on a towel or cardboard in order to protect the surface Figure 1.
- 2) Loosen the M8 bolts on back of your running boards Figure 2. Depending on your model there will be either 6 or 8 bolts installed per side.
- 3) Once your brackets have been installed, place the running board onto the brackets as shown on Figure 3.
- 4) Adjust running boards, centering on vehicle. Hand tight M8 hardware on running boards.
- 5) Follow the torque procedures, torque M8 hardware to **7 ft-lbs** using a torque wrench.
- 6) Cleaning and maintaining your running boards is important, apply a light coat of a quality carnauba wax at least 2X per year. Wash often with mild soap and make sure to remove all soap residue. Many car automatic carwashes use a strong soap, make sure to use enough water to remove all residue.
- 7) Register your products