



# Installation Instructions

Part No. **2332**

Product: Running Boards

Application:

**Hyundai Palisades 2020+**

**Kia Telluride 2020+**

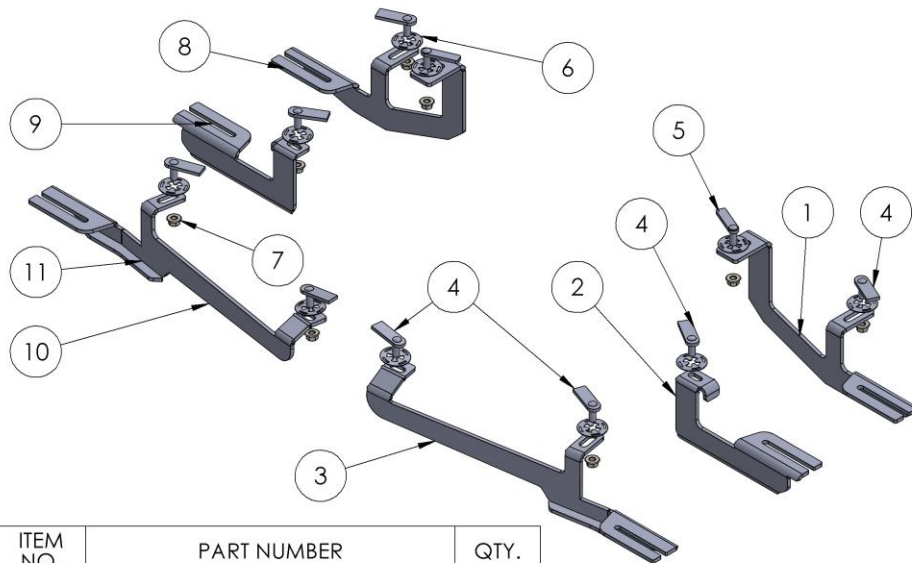
Level of Difficulty: 1 **2** 3 4 5

Installation Time: 90 Min

REV 1 02/10/20

Hardware	Torque Specifications
M6 Bolt	3 ft-lbs.
M8 Bolt	7 ft-lbs.
M10 Bolt	16 ft-lbs.
M12 Bolt	28 ft-lbs.

**ATTENTION:** Use correct torque settings to avoid damaging the running boards and or mounting brackets. Failure to do so will void your warranty.



ITEM NO.	PART NUMBER	QTY.
1	2332850B0 Driver	1
2	233285C0 Driver	1
3	2332850F0 Driver	1
4	HTC 230 - M10x25 (5x20x60)	8
5	HTC 262 - M10X30 (5X15X60)	2
6	HTC 269 - CLIPS (M10)	10
7	DIN 6923 FLANGE NUT - M10	10
8	2332850B0 Passenger	1
9	233285C0 Passenger	1
10	2332850F0 Passenger	1

# Installation Instructions 2332 Bracket Kit

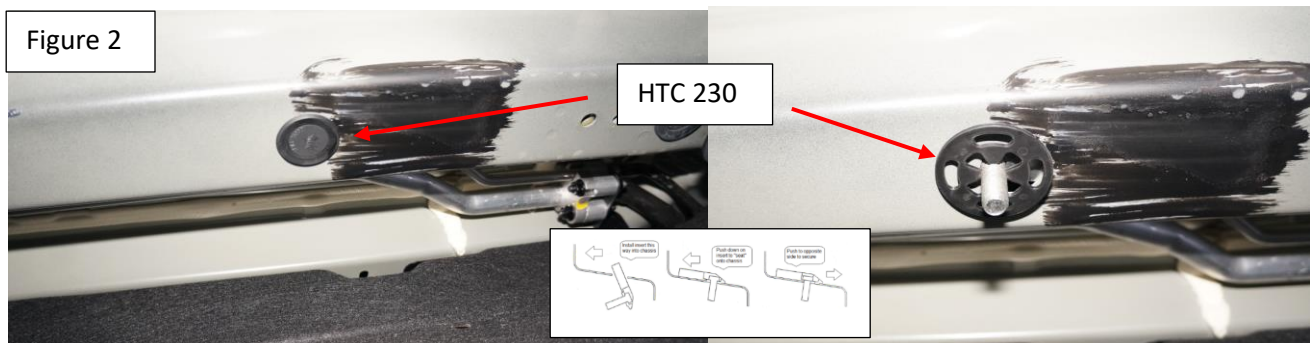
**NOTE: This vehicle requires undercarriage panel trimming**

**Step 1:** Remove lower undercarriage panels. Front Figure 1

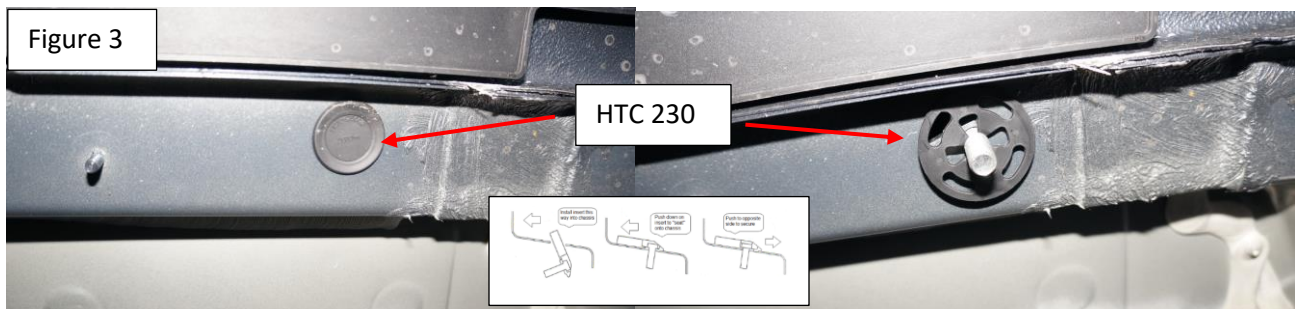


**Step 2:** Locate front mounting locations and hardware as per 1<sup>st</sup> page of this installation manual

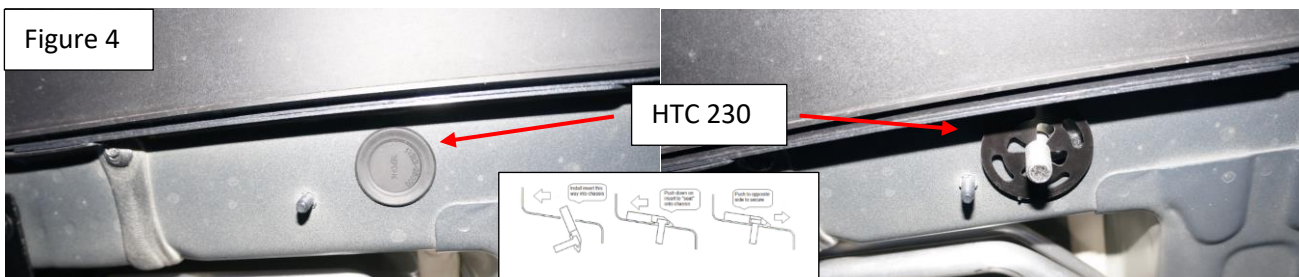
**Step 3:** Remove factory rubber plug on inner mounting area Figure 2 install supplied HTC 230



**Step 4:** Remove factory rubber plug on outer mounting area Figure 3 install supplied HTC 230

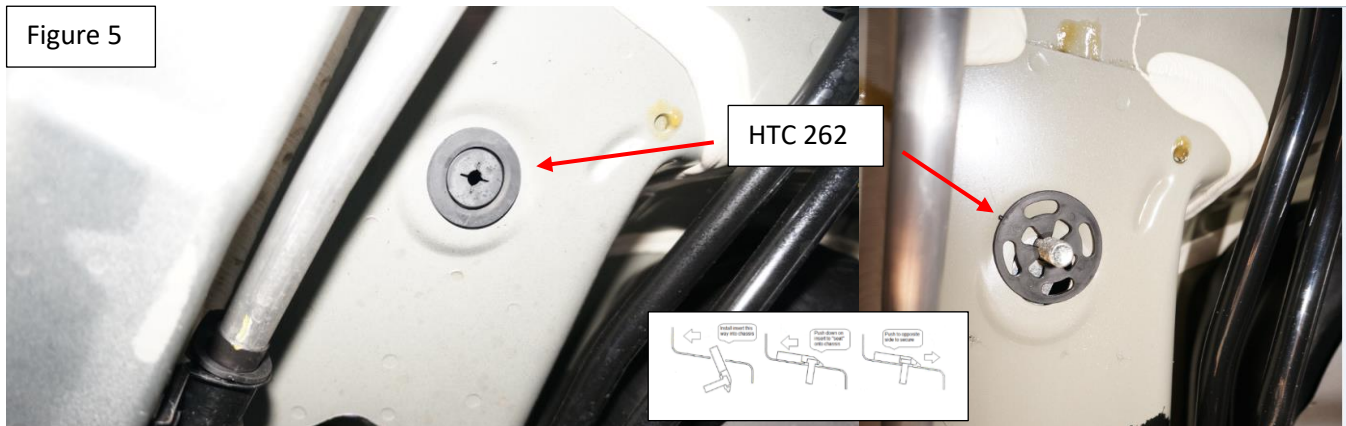


**Step 5:** Remove factory rubber plug on middle mounting area Figure 4 install supplied HTC 230



# Installation Instructions 2332 Bracket Kit

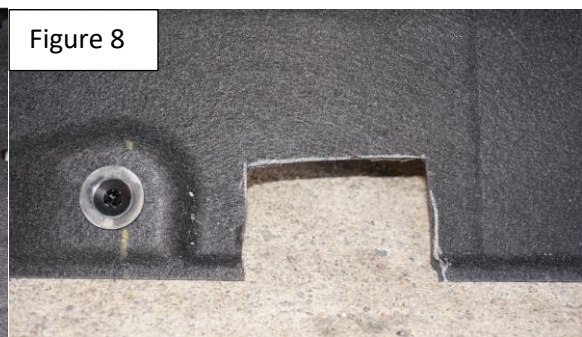
**Step 6:** Remove factory rubber plug on rear inner mounting area Figure 5 install supplied HTC 262



**Step 7:** Remove factory rubber plug on rear outer mounting area Figure 6 install supplied HTC 230



**Step 8:** Trim a 4 x 4 square on front inner mounting location, using the HTC 230 as a guide mark and cut Figure 7. Trim a 2 x 4 piece in the front outer panel, use the factory bolt as a guide Figure 8



# Installation Instructions 2332 Bracket Kit

**Step 9:** Trim a 2 x 2 square in the middle bracket location as show Figure 9

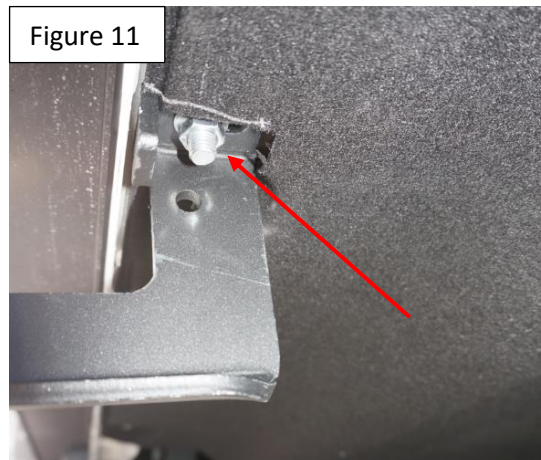


**Step 10:** Install panels back onto vehicle.

**Step 11:** Install front bracket as shown Figure 10 Do not tighten



**Step 12:** Install middle bracket as shown Figure 11 Do not tighten



# Installation Instructions 2332 Bracket Kit

---

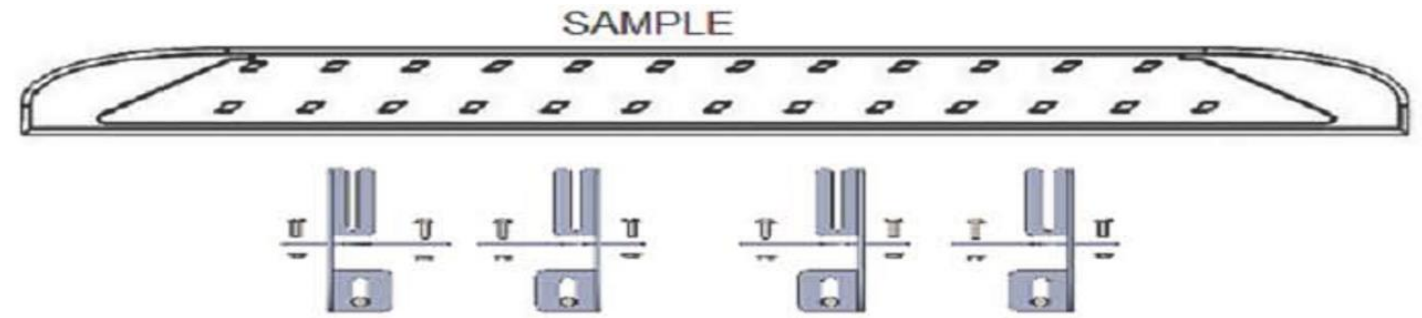
**Step 13:** Install rear bracket as shown Figure 12 Do not tighten



**Step 14:** Proceed to last page of this manual for running board install instructions and torque values

***Thank you for choosing Romik.***

# Running Board Installation Instructions



**RAL / RB2 / REC / RCV / RZR**



**ROB / ROF / RPD**

- 1) Flip your Romik running boards onto a flat surface, make sure to place the running boards on a towel or cardboard in order to protect the surface Figure 1.
- 2) Loosen the M8 bolts on back of your running boards Figure 2. Depending on your model there will be either 6 or 8 bolts installed per side.
- 3) Once your brackets have been installed, place the running board onto the brackets as shown on Figure 3.
- 4) Adjust running boards, centering on vehicle. Hand tight M8 hardware on running boards.
- 5) Follow the torque procedures, torque M8 hardware to **7 ft-lbs** using a torque wrench.
- 6) Cleaning and maintaining your running boards is important, apply a light coat of a quality carnauba wax at least 2X per year. Wash often with mild soap and make sure to remove all soap residue. Many car automatic carwashes use a strong soap, make sure to use enough water to remove all residue.