



Made in the USA

JL Front Bumper

FB-F-100/101/102/103-JL

INSTALLATION MANUAL



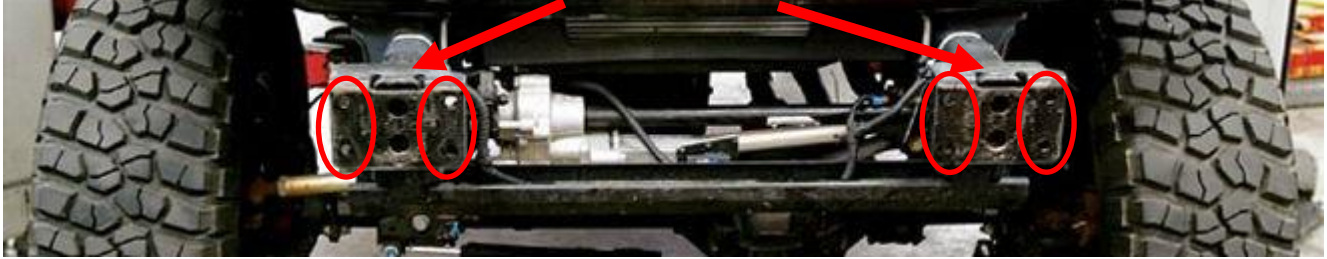
Tools Required	
5/8 socket	9/16" socket
18 mm socket	11/16 wrench

PRIOR TO INSTALLING YOUR NEW ROCK SLIDE ENGINEERING BUMPER,
 REMOVE THE FACTORY BUMPER AND SAVE THE HARDWARE
 YOU WILL REUSE SOME OF THE FACTORY HARDWARE

Step 1

Mount the new bumper to the frame using the following instructions:

With the factory bumper removed, locate the two frame mounts. Each frame mount will have 4 open holes.

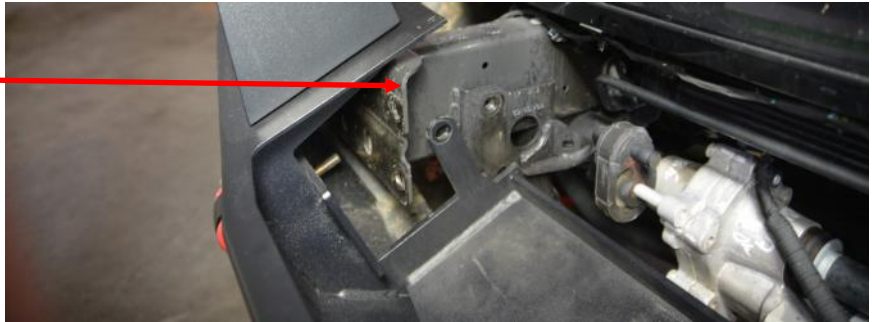


Step 2

Line up the bumper with your frame mounts.

Tilt your bumper so the back winch plate brackets slide behind the front mounting locations.

Slide the bumper up and onto the frame.

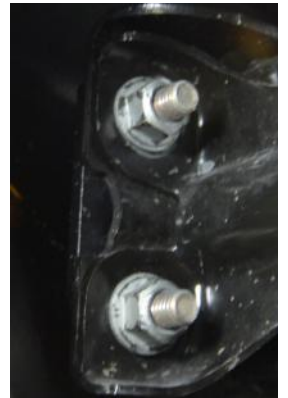


Step 3

Line up the bolts on the rear of the bumper with the frame mounts.

Slide the bumper bolts through the mounts and reuse a factory nut on the backside to hold the bumper in place on the 4 bolts that you slid through the frame mounting brackets.

Tighten down halfway

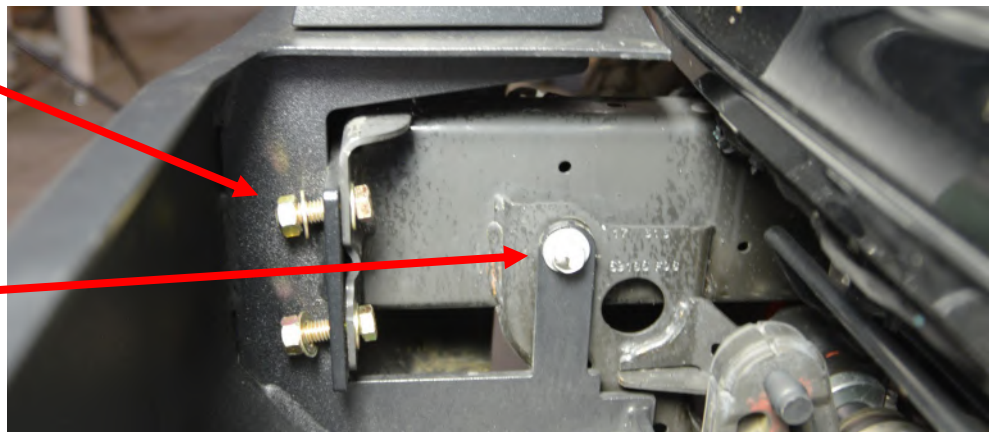


Step 4

Install 2 bolts with washers and a nut loosely into the frame mounts with the bolt facing forward on the passenger and driver side of the bumper.

Reinstall loosely the factory bolt you removed into the winch plate bracket.

**If this bolt was not removed, simply remove it and reinstall it into place

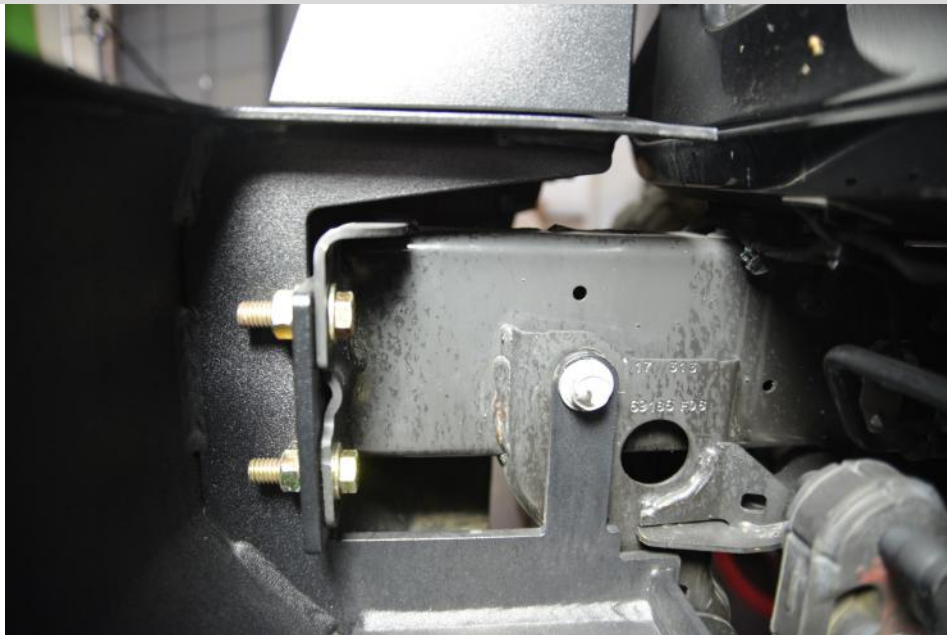


Step 4

Tighten down all hardware starting with the new grade 8 zinc plated hardware.

Tighten down the factory nuts that were replaced in step 3

Lastly, tighten down the winch plate bolt.



Step 5 ** Winch install ** OPTIONAL

Install winch into bumper using the supplied winch hardware. Mount the winch to the bumper using the underside 4 holes.

**Note: Some winches can be installed after the bumper has been installed. If this is a concern, set the winch in the bumper prior to install and install the winch after the bumper has been completely installed.

PRODUCT INFORMATION:

WARNING: Neither the seller nor the manufacturer will be liable for any loss, damage, or injury directly or indirectly arising from the use of or inability to determine the use of these products. Before using, the user shall determine the suitability of the products for its intended use, and the user shall assume all responsibility and risk in connection therewith.

REFUNDS / RETURNS: Products returns are possible if: A) the product is returned in it's original packaging, in perfect condition and the return shipping is pre-paid. B) the product is incorrect due to a shipping error on behalf of Rock Slide Engineering. The original purchaser may, within 30 days of the date of purchase, exchange an item if it is returned in its original unaltered condition. Returns must be accompanied by a sales receipt to verify proof of purchase.

PRIVACY POLICY: We believe in 100% privacy. Your information is shared with NO other companies or individuals.

SHIPPING DAMAGE: If the product was damaged during shipping, you must report such damage to Rock Slide Engineering with 24 hours. In such case all the packaging materials must be retained so Rock Slide Engineering can process a damage claim with the carrier.

