



**ROCK HARD 4X4 JEEP WRANGLER JK 2007-2018
FRONT BUMPER SKID PLATE FOR PLASTIC JEEP
X/SPORT/SAHARA/RUBICON RH-6070
Installation Manual**



PACKING LIST:

- 1 - SKID PLATE**
- 2 - REAR MOUNTING BRACKETS**
- 2 - BLACK MACHINED SPACERS**
- 4 - 3/8" FLAT WASHERS**
- 2 - 3/8 X 1" CARRIAGE BOLTS**
- 6 - 3/8" NYLOCK NUTS**
- 2 - 3/8 X 1" BUTTONHEAD
BOLTS**
- 2 - 3/8 X 1-1/2" BUTTONHEAD
BOLTS**

**(YOU MAY HAVE EXTRA
HARDWARE)**

REQUIRED TOOLS:

- 9/16" WRENCH**
- 7/32" ALLEN**
- 16MM SOCKET**
- FLATHEAD SCREWDRIVER**
- FLOOR JACK (OPTIONAL)**

Thank you for your purchase! Whether you bought this Rock Hard 4x4 product from one of our fantastic dealers or our factory direct team, we thank you for your business.

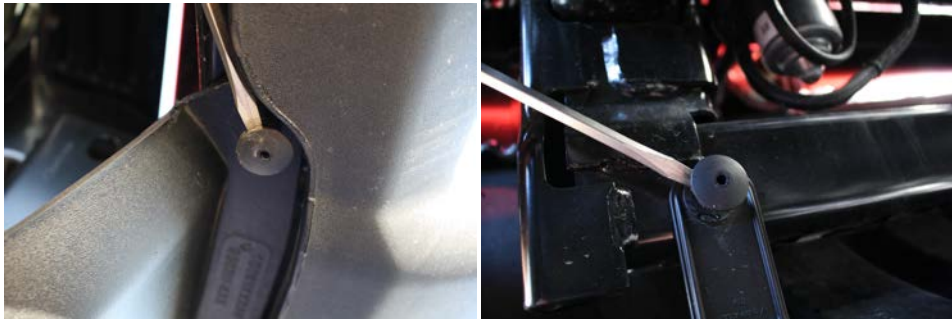
Rock Hard 4x4 is a family owned and operated business. We are headquartered in Saint Paul, Nebraska where we design, fabricate, and produce every single one of our products. Every single part we manufacture is 100% Made in the USA and exclusively in house by the Rock Hard 4x4 team.

We outsource zero processes.

To you, that means the product you are installing is the highest quality and longest lasting component on the market.

To us, that means you've selected a part we've spent years developing. Each Rock Hard 4x4 part has gone through more research and development and evolution than most people realize. While our parts may have the same striking look year after year, subtle revisions and refinements we implement maintain their status as the most durable and easy to install on the market.

1. Remove factory air dam if equipped. Pop out 4 plastic rivets underneath front of bumper, 2 in middle.



2. Remove driver and passenger side rear sway bar mounting bolts using 16mm socket.
3. Install driver and passenger side skid plate drop brackets.



PRO TIP: Some skid plates actually install easier if you install front of skid first. Skid to step 8.

4. Mount skid plate to sway bar drop brackets. Skid installs on inside of drop brackets. Use carriage bolts (bolt head towards rear of vehicle – nut on inside of skid plate). Tighten with 9/16" wrench.



5. Insert spacers between bottom of crash bar and skid plate – line up with holes in middle of skid plate.
6. Insert 3/8" x 1-1/2" buttonhead bolt with washer from bottom side up so threads are inside crash bar channel. Thread 3/8" nylock nut onto bolt. (Work area is tight, you can position nut over threads using long screwdriver or punch through round crash bar side holes.)

7. Insert 9/16" wrench through side upper crash bar corner cutouts. Tighten using 7/32" allen.



8. Install remaining 2x 3/8" bolts with washers from bottom side up (threads inside bumper cavity) and secure using 3/8" nylock nuts and 9/16" wrench.
9. Check drag link adjustment sleeve for clearance. Loosen and rotate away if there is contact with backside of skid.



Learn more about performance suspension parts we have.