



**ROCK HARD 4X4 JEEP WRANGLER JK 2/4-DOOR
2007-2017 FRONT BUMPER (ALL)
PART #: RH-5001-B / 5002 / 5003 / 5004 / 5005 / 5006 /
5007 / 5008 / 5009 / 5041 / 5042 / 5045 / 5046
Installation Manual**



Thank you for your purchase! Please read all instructions carefully prior to beginning installation of your Rock Hard 4x4 product.

PACKING LIST:

- 1 - FRONT BUMPER**
- 8 - 1/2" X 3" BUTTON HEAD BOLTS**
- 8 - 1" X 1 3/8" SPACERS**
- 8 - 1/2" WASHERS**
- 8 - NYLOCK NUTS**
- 8 - 10 X 3/4" SELF DRILLING SCREWS**
- 1 - 1/2" THIN NUT BOLT FOR ZEON INSTALL**
- 1 - 1/2" X 2-3/4" BUTTON HEAD BOLT FOR ZEON INSTALL**
- 2 - 2" X 2" PLASTIC PLUGS**
- 2 - JK LED FOG TRIM RINGS (FOR LATE MODEL LED FOG LIGHTS, IF APPLICABLE)**

ALUMINUM FRONT BUMPER ONLY:

- 2 - LONG RECTANGULAR PLATES (HOLES EACH END)**

REQUIRED TOOLS:

- WIRE OR ZIP TIE SNIPS**
- 3/4" SOCKET AND WRENCH**
- 3" SOCKET WRENCH EXTENSION**
- 5/16" OR 8MM ALLEN WRENCH**
- 5/16" OR 8MM SOCKET**
- PHILLIPS SCREWDRIVER**

Thank you for your purchase! Please read all instructions carefully prior to beginning installation of your Rock Hard 4x4 product.

Thank you for your purchase! Whether you bought this Rock Hard 4x4 product from one of our fantastic dealers or our factory direct team, we thank you for your business.

Rock Hard 4x4 is a family owned and operated business. We are headquartered in Saint Paul, Nebraska where we design, fabricate, and produce every single one of our products. Every single part we manufacture is 100% Made in the USA and exclusively in house by the Rock Hard 4x4 team.

We outsource zero processes.

To you, that means the product you are installing is the highest quality and longest lasting component on the market.

To us, that means you've selected a part we've spent years developing. Each Rock Hard 4x4 part has gone through more research and development and evolution than most people realize. While our parts may have the same striking look year after year, subtle revisions and refinements we implement maintain their status as the most durable and easy to install on the market.

NOTE: All lowered winch plate JK front bumpers have a predesigned allowance for side and center spool winches. This fairlead cutout may visually appear off center, but is the safe average that allows for all popular winches.

REMOVING FACTORY FRONT BUMPER

1. Remove upper valence by unscrewing two plastic body plugs. Sometimes it's easier to simply drill them out. Discard – will not be reused.
2. Remove lower air dam by unclipping 4 plastic body plugs along front of bumper and 2 along back of air dam. Discard – will not be reused.
3. Use a 18MM socket and 3” extension to remove 8 nuts on back of front bumper. 4 per frame cap.
4. Unclip factory fog lights harness from passenger side frame rail (if equipped).
5. Slide factory front bumper off frame rails to expose remaining factory fog light wiring harness clips. Use wire cutters to cut zip ties, do not cut fog light wires.
6. Unclip factory fog lights from housings.
7. Remove front bumper from vehicle.
8. If reusing factory fog lights, use Phillips screwdriver to unscrew 4 screws per light housing (if equipped).

Thank you for your purchase! Please read all instructions carefully prior to beginning installation of your Rock Hard 4x4 product.

INSTALLING ROCK HARD 4X4 FRONT BUMPER

1. Install OEM fog lights into front bumper (if applicable) using 5/16" or 8MM and supplied zip screws. 4 per light into Rock Hard 4x4 front bumper fog light housing.

PRO TIP: You may need to trim a small corner off factory fog light mounting tabs to fit inside bumper. This can be done with a file, hack saw, or small blade. OEM HARD ROCK EDITION and 10" Anniversary Steel Front bumper fog lights not compatible. If your aftermarket fog lights do not sit perfectly horizontal, you can redrill new holes.

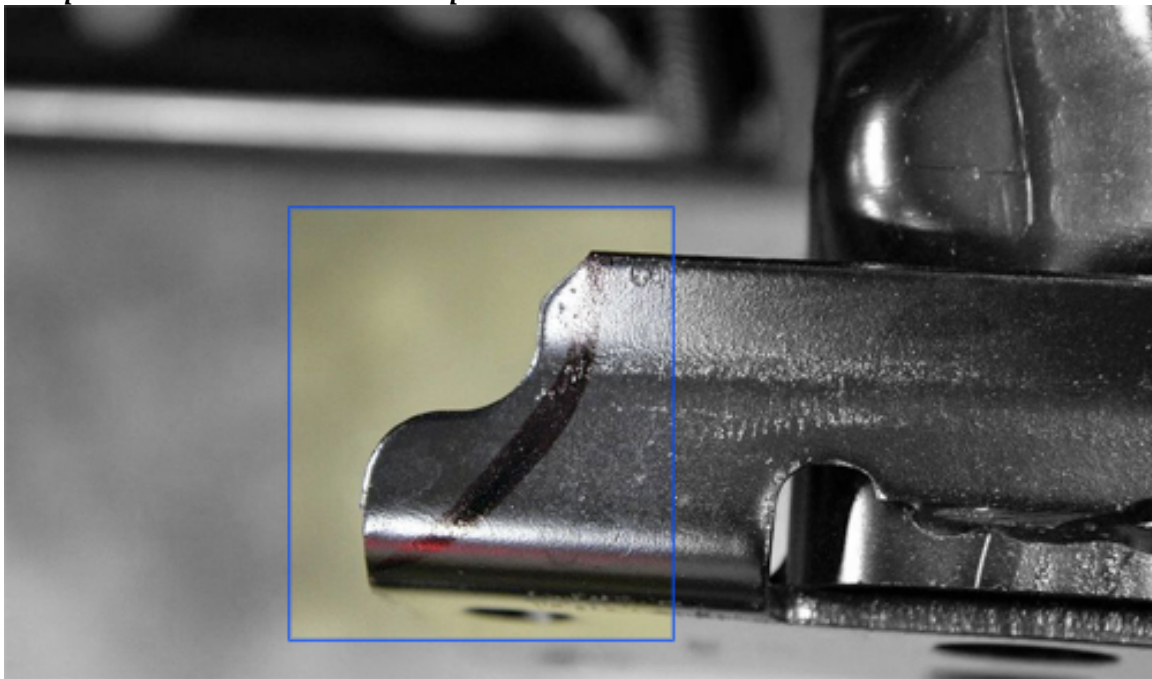
IF INSTALLING A LOWERED WINCH MOUNT FRONT BUMPER ON A 2012 OR NEWER WRANGLER, RELOCATE FACTORY VACUUM PUMP AT THIS TIME USING ROCK HARD 4X4 PART RH-5011 (sold separately).

2. Slide new Rock Hard 4x4 front bumper onto frame. Leave approximately 2" between end of frame caps and inside of front bumper.
3. Use eight 1" x 1 3/8" long spacers between front end of frame and new bumper.
PRO TIP: All winches, except for some imports, will use long spacers between Jeep frame and nut. Some import winches have wires that come directly out of back of winch and would normally hit grille. In this case, use short spacers plus long spacers to provide enough room to run wire between grille and bumper.
4. Install eight 1/2" x 3" button head bolts from front of bumper through spacers and into frame. Use a 3/4" socket on back of nut, 5/16" or 8MM allen for bolt head.

Thank you for your purchase! Please read all instructions carefully prior to beginning installation of your Rock Hard 4x4 product.

PRO TIP: If installing Rock Hard 4x4 tow bar brackets, install at this time with supplied hardware in tow bar bracket kit. Tow bar bracket kits sold separately.

PRO TIP: If installing a Warn ZEON winch, use one ½" x 2 ¾" button head and one ½" thin nylock nut on top inner driver side frame mount for winch clearance. You may have to grind upper frame horn for winch clearance - trim away the driver side, upper flap of the frame horn, inside half. You do NOT trim away the face of your frame horn where your hardware mounts, just the peeled back steel. See photo below:



5. Install eight ½" washers and eight nylock nuts on inside of bumper.
6. Reroute wiring harness to fog lights and reconnect fog lights to harness.

Thank you for your purchase! Please read all instructions carefully prior to beginning installation of your Rock Hard 4x4 product.

WINCH INSTALL TIPS:

- A. Install winch using supplied bolts and hardware.
- B. If installing a winch into a Rock Hard 4x4 aluminum front bumper, use supplied two long rectangular washers for bottom side of winch plate for added strength.
- C. You may notice your fairlead is not perfectly centered on the front bumper. This is because of the two popular winch styles – center spool and side spool. Our fairlead is the safe average between those two styles.

CONGRATULATIONS! Now go wheel your rig with a whole new level of confidence and capability.