



**ROCK HARD 4X4 JEEP WRANGLER JK 2/4-DOOR  
2007-2017 WINCH PLATE FOR  
10A/HARD ROCK EDITION FRONT BUMPER  
PART #: RH-5017  
Installation Manual**



## **PACKING LIST:**

- 1 - WINCH PLATE**
- 4 - 4x 3/8" x 1" BOLTS**
- 4 - 3/8" LOCK WASHERS**
- 4 - 3/8" NUT**
- 1 - FAIRLEAD PLATE**
- 2 - 1/2" X 1" BOLT**
- 2 - 1/2" LOCK WASHERS**
- 2 - 1/2" WELDED NUT TAB**
- 4 - 7 GAUGE X 1-1/2" OD, 3/8" HOLE WASHER**

## **REQUIRED TOOLS:**

- TORX 30**
- 9/16" SOCKET**
- 3/4" SOCKET**
- PLIERS**
- 18MM SOCKET**
  
- GRINDER OR SAWZALL**  
**(Warn Zeon/PowerPlant style winch only)**

**Thank you for your purchase! Whether you bought this Rock Hard 4x4 product from one of our fantastic dealers or our factory direct team, we thank you for your business.**

Rock Hard 4x4 is a family owned and operated business. We are headquartered in Saint Paul, Nebraska where we design, fabricate, and produce every single one of our products. Every single part we manufacture is 100% Made in the USA and exclusively in house by the Rock Hard 4x4 team.

We outsource zero processes.

**To you**, that means the product you are installing is the highest quality and longest lasting component on the market.

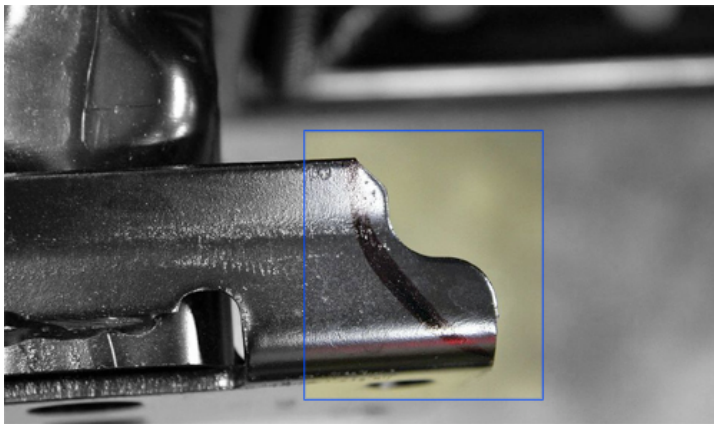
**To us**, that means you've selected a part we've spent years developing. Each Rock Hard 4x4 part has gone through more research and development and evolution than most people realize. While our parts may have the same striking look year after year, subtle revisions and refinements we implement maintain their status as the most durable and easy to install on the market.

## **REMOVING FRONT BUMPER**

1. Use a 18MM socket and 3" extension to remove 8 nuts on back of front bumper. 4 per frame horn.
2. Unplug factory fog lights at connectors behind lights.
3. Remove front bumper from vehicle.

## **INSTALLING WINCH PLATE**

*PRO TIP: If installing a Warn ZEON winch, you may have to grind upper frame horn for winch clearance - trim away the driver side, upper flap of the frame horn, inside half. You do NOT trim away the face of your frame horn where your hardware mounts, just the peeled back steel. See photo below:*



*DISCONTINUED BUMPER NOTICE: There is a very limited number of factory bumpers with a different fairlead cutout. Part #68184963AB. These are not compatible with the fairlead plates we include, but are compatible with our winch plate. If you have this bumper, made only in the first part of 2013, please call us.*

*Winch plate may contact electronic sway bar disconnect motor's rubber isolator/limiter (if equipped). This is normal, not an issue.*

*REQUIRED: RH-5011 VACUUM PUMP RELOCATION BRACKET  
ON ALL 2012 - 2017 WRANGLERS (sold separately).*

1. Install RH-5011 Vacuum Pump Relocation Bracket (sold separately) per instructions onto vehicle, if applicable.
2. Remove bumper top plate using Torx 30 wrench. You can reinstall bolts later if you wish for a finished look.
3. Remove front fairlead cover plate from bumper. These plastic clips can be a headache, you can cut them off and/or break them apart with pliers.
4. Install supplied fairlead mounting plate to bumper using supplied bolts, washers, and nuts.
5. Install winch plate from bottom up between frame rails and align side mounting holes with existing holes in frame rails.
6. Install welded nut inserts into slots in frame rails where side mounting holes install. Install two ½" bolts with lock washers and flat washers using ¾" socket.
7. Reinstall bumper, tighten hardware.
8. Install winch. Use supplied thick washers to help center winch mounting bolts under winch plate. Washers go between winch mounting bolts and bottom of winch plate.

## **Rock Hard 4x4 Exclusive Limited Lifetime Warranty**

*This Limited Warranty is the only warranty made in connection with your purchase. Rock Hard 4x4 neither assumes nor authorizes any vendor, retailer or other person or entity to assume for it any other obligation or liability in connection with this product or Limited Warranty.*

*What is Covered: Subject to the terms, exclusions and limitations herein and with respect only to Rock Hard 4x4 branded accessories first sold in the United States, Rock Hard 4x4 warrants to the initial retail purchaser only that your Rock Hard 4x4 accessory shall be free of defects in material and workmanship for the lifetime of this product.*

*Rock Hard 4x4 reserves the rights to: (a.) require invoice or other proof your accessory is within the terms of this Limited Warranty as a condition of warranty service and, (b.) make future revisions to this product and Limited Warranty without prior notice or obligation to upgrade your product.*

**What is Not Covered:** *Your Rock Hard 4x4 Limited Warranty does not cover products or parts Rock Hard 4x4 determines to have been damaged by or subjected to:*

*(a.) Installation damage, alteration, modification, combination with other parts, failure to maintain or improper repair or service, (b.) normal wear & tear, cosmetic damage or damage from moisture or water immersion, (c.) Acts of God, accidents, misuse, negligence, inadequate mounting or impact with vehicle(s), obstacles or other aspects of the environment, (d.) theft, vandalism or other intentional damage. (e.) powder coat, anodizing, or paint finish.*

**Remedy Limited to Repair/Replacement:** *The exclusive remedy provided hereunder shall, upon Rock Hard 4x4 inspection and at Rock Hard 4x4's option, be either repair or replacement of product or parts (new or refurbished) covered under this Limited Warranty. C*

**Your Rights Under State Law:** *In consideration of the purchase price paid, neither Rock Hard 4x4 nor any independent Rock Hard 4x4 distributor/licensee are responsible for any time loss, rental costs, or for any incidental, consequential, punitive or other damages you may have or incur in connection with any part or product purchased.*