



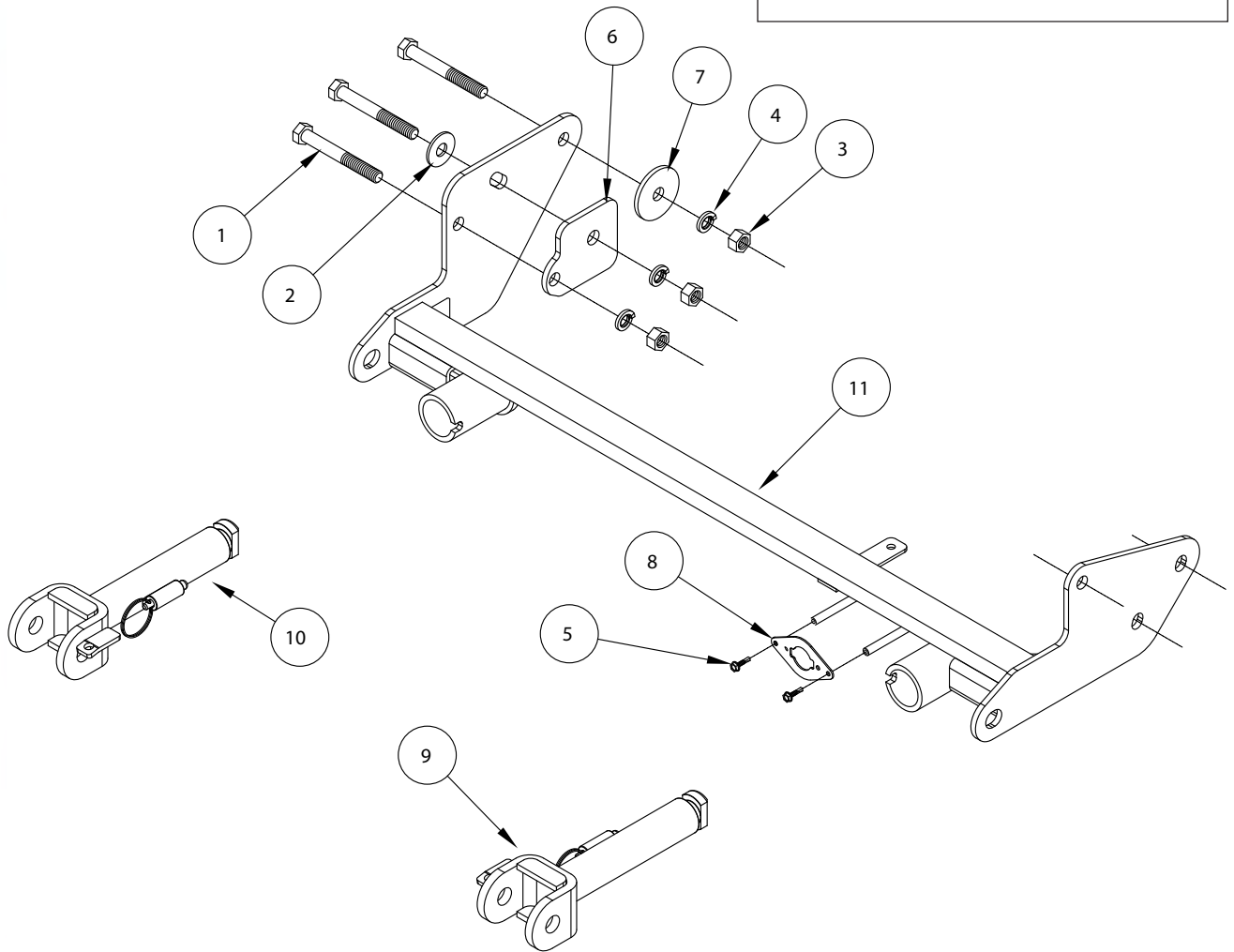
# BASEPLATE KIT INSTALLATION INSTRUCTIONS

**KIT# 521424-5**

KS

ROADMASTER, Inc.

**Important**  
 Note: this bracket will not accommodate the Guardian rock shield, some models of the Tow Defender, or the StowMaster and StowMaster All Terrain tow bars.



ITEM	QTY	NAME	PART #
1.....	3	.....1/2" x 4" BOLT .....	350105-00
2.....	1	.....1/2" FLAT WASHER .....	350308-00
3.....	3	.....1/2" NUT .....	350258-00
4.....	3	.....1/2" LOCK WASHER.....	350309-00
5.....	2	.....#10 x 3/4" SELF DRILLING SCREW .....	350247-35
6.....	1	.....PASSENGER SIDE BACKING PLATE .....	A-000583
7.....	1	.....1/2" PLATE WASHER .....	A-003086
8.....	1	.....WIRE PLUG PLATE .....	A-003801
9.....	1	.....DRIVER SIDE ARM .....	C-002383
10.....	1	.....PASSENGER SIDE ARM.....	C-002384
11.....	1	.....MAIN RECEIVER BRACE.....	C-003028



# BASEPLATE KIT INSTALLATION INSTRUCTIONS

**KIT# 521424-5**

KS

ROADMASTER, Inc.

This is one of our EZ5 series brackets, which allows the visible front portion of the bracket to be easily removed from the front of the vehicle (Fig.A and Fig.B). The bracket consists of a main receiver brace, two removable front braces, and a hardware pack.

The main receiver brace mounts to the frame rails. The removable front braces install in the main receiver brace.

Before starting the installation, lay out the kit components in order, as they will be used. This will give you a visual idea of how the components work, and will also confirm that everything is present and accounted for.



**IMPORTANT:** All brackets **must** be assembled with all the bolts left loose for final adjustment and positioning (before tightening) unless otherwise instructed. All bolts **must** be torqued for proper strength. If more than one bolt is used per fastening point, the diagram may only show one.

- Use flat washers over all slotted holes
- Use lock washers on all fasteners

## WARNING

Failure to follow these instructions can result in property damage, personal injury or even death.

- Installation of most mounting brackets requires moderate mechanical aptitude and skills. We strongly recommend professional installation by an experienced installer.
- The installer must read the instructions and use all bolts and parts supplied. Failure to do so could result in loss of the towed vehicle.
- Use Loctite® Red on all bolts used for mounting this bracket.
- Every 3,000 miles, the owner must inspect the fasteners for proper torque, according to the bolt torque requirements chart on the last page of these instructions. The owner must also inspect all mounts and brackets for cracks or other signs of fatigue every 3,000 miles. Failure to do so could result in loss of the towed vehicle.
- The owner must check the vehicle manufacturer's instructions for the proper procedure(s) to prepare the vehicle for towing. Some vehicles must be equipped with a transmission lube pump, an axle disconnect, driveline disconnect or free-wheeling hubs before they can be towed. Failure to properly equip the vehicle will cause severe damage to the transmission.
- If running changes were made by the vehicle manufacturer after this bracket was designed, some bolts or other fasteners in the hardware pack may no longer be the correct size. It is the installer's responsibility to verify that the bracket is securely fastened to the vehicle and fitted with the correct hardware to account for these changes. Failure to securely fasten the bracket could result in loss of the towed vehicle.
- If the towed vehicle has been in an accident, it must be properly repaired before attaching the bracket. Do not install the bracket if any structural frame damage is found. Failure to repair the damage could result in the loss of the towed vehicle.
- Roadmaster manufactures many styles of brackets. If your bracket has removable arms, they must be removed before driving the vehicle, unless the arms can be pinned or padlocked in place. If not secured, the arms could vibrate out, resulting in non-warranty damage or personal injury.
- Some motorhome chassis have such a tight turning radius that you can damage your motorhome, towed vehicle, tow bar or bracket while turning sharply. Before getting on the road, test your turning radius in an empty parking lot. Turning too sharply could result in non-warranty damage to towing system, motorhome and/or towed vehicle.
- Do not back up with the towed vehicle attached or non-warranty damage will occur to your towing system, motorhome and/or towed vehicle.
- The safety cables must connect the towing vehicle to the towed vehicle frame to frame, with the cables crossed, with enough slack for sharp turns. Refer to the cable instructions for proper routing. Failure to leave enough slack in the safety cables, or failure to connect the safety cables frame to frame, will result in the loss of the towed vehicle.
- This bracket is designed for use with ROADMASTER tow bars and ROADMASTER adaptors only. Using this bracket with other brands, without an approved ROADMASTER adaptor, may result in non-warranty damage or injury.
- Do not use this document for custom fabrication, as it may not show all parts or structural components. Custom fabrication or an attempt to copy this bracket design could result in loss of the towed vehicle.
- Upon final installation, the installer must inspect the bracket to ensure adequate clearance, particularly around hoses, air conditioner lines, radiators, etc., or non-warranty damage to the towed vehicle will result.
- This bracket is only warranted for the original installation. Installing a used bracket on another vehicle is not recommended and will void the warranty.



# BASEPLATE KIT INSTALLATION INSTRUCTIONS

**KIT# 521424-5**

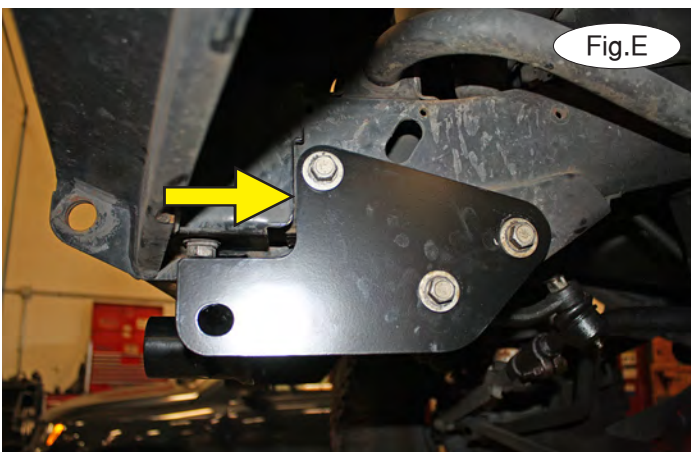
KS

ROADMASTER, Inc.



1. **Important:** please use all supplied bolts and parts and read all instructions carefully before beginning this installation. The majority of questions you may have can be answered within the text, and proper installation will ensure safe and secure travel. On the driver's side only, remove the rear 5/8" steering box bolt from the side of the frame (Fig.C).

2. Place the main receiver brace around the frame on each side and align it with the hole you exposed in the previous step. Replace the bolt you removed in the previous step, tightening it but leaving it out about an 1/8" (Fig.D). Let the bracket hang down for now. *Note:* ensure proper alignment, as the bolts will receive Loctite® Red and will be torqued at the end of these instructions.



3. Using a jack stand, if necessary, to support the steering box, remove the two remaining 5/8" bolts from the steering box and rotate the bracket up over the holes and replace the bolts (Fig.E). *Note:* if the edge of your bumper (Fig.E – arrow) impedes your ability to rotate the bracket, loosen the rear bolt slightly to allow it to clear the edge.

4. On the passenger side, use the supplied 1/2" x 4" bolt in the forwardmost hole (Fig.F). Finish with the passenger side backing plate, 1/2" lock washer and 1/2" nut (Fig.G).





# BASEPLATE KIT INSTALLATION INSTRUCTIONS

**KIT# 521424-5**

KS

ROADMASTER, Inc.



5. Ensure that the bracket is level side to side (Fig.H) and front to back (Fig.I). Then, tighten all bolts to the bolt torque specifications found at the end of these instructions. *Note:* use Loctite® Red on all nuts and bolts. Ensure that the backing plate is still level before proceeding to the next step.

6. On each side, drill a ½" hole straight through the center of the slotted hole, ensuring that the drill is level (Fig.J). Drill through the inside layer of the frame and out through the backing plate you installed in step 4. Then, place a ½" plate washer over a ½" x 4" bolt and bolt through the bracket, backing plate and frame rail and finish with a ½" nut (Fig.K).



7. On each side, use the rearmost hole in the bracket as a template and drill straight through both layers of the frame. Then, bolt through the hole using the supplied ½" x 4" bolt and finish with a ½" plate washer, lock washer and nut on the inside of the frame rail, lifting the rubber covering out of the way to allow for clearance (Fig.L).

8. Tighten all bolts to the bolt torque requirements found at the end of these instructions. *Note:* use Loctite® Red on all nuts and bolts.





# BASEPLATE KIT INSTALLATION INSTRUCTIONS

**KIT# 521424-5**

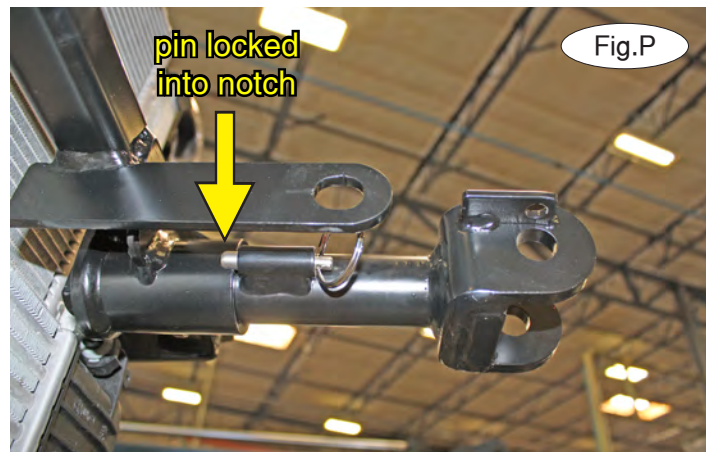
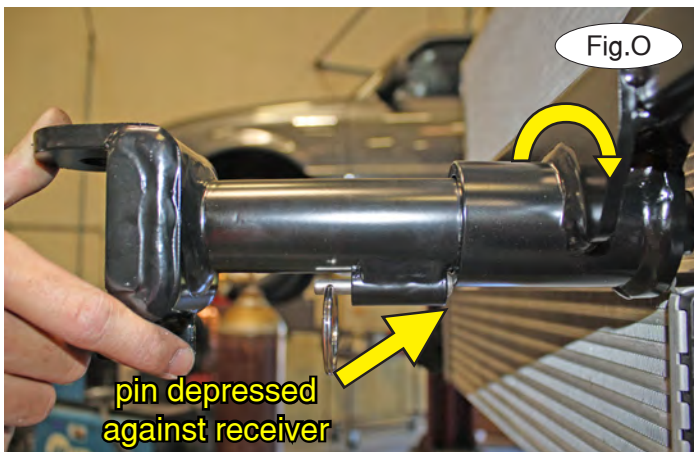
KS

ROADMASTER, Inc.



9. **Note: the following four images are for illustration purposes only, as your specific application may be slightly different.**

The spring-loaded pin on the removable arm snaps into a notch on the receiver, locking the removable arm into its final towing position. Before inserting each arm into the receiver, verify that the spring is working by ensuring that the spring-loaded pin moves easily back and forth within the barrel when pulled and that it can be pulled flush with the face of the barrel (Fig.M and Fig.N).



10. On each side, insert the removable front bracket arm into the front receiver 90 degrees from its final towing position, depressing the spring-loaded pin against the receiver (Fig.O). Now, twist back 90 degrees until the spring-loaded pin snaps into place in the notch on the receiver, locking the arm into place in its final towing position (Fig.P).

**Please note: it is the owner's responsibility to ensure the locking of the pins before towing. Otherwise, failure of the towing system will result.**

11. Install the tow bar to the mounting bracket according to the manufacturer's instructions.



# BASEPLATE KIT INSTALLATION INSTRUCTIONS

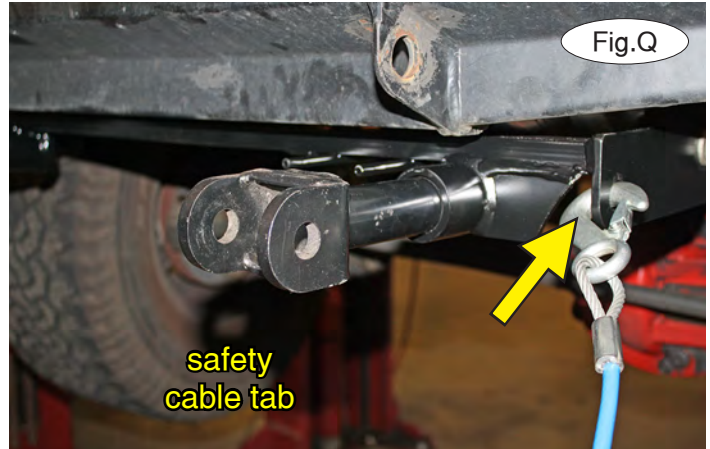
**KIT# 521424-5**

KS

ROADMASTER, Inc.

### IMPORTANT!

Safety cables are required by law. When towing, connect safety cables to the safety cable tabs illustrated in Figure Q. Make certain there is adequate slack in the cables to allow a full turning radius; otherwise, damage will result. If necessary, longer cables or cable extensions are available.

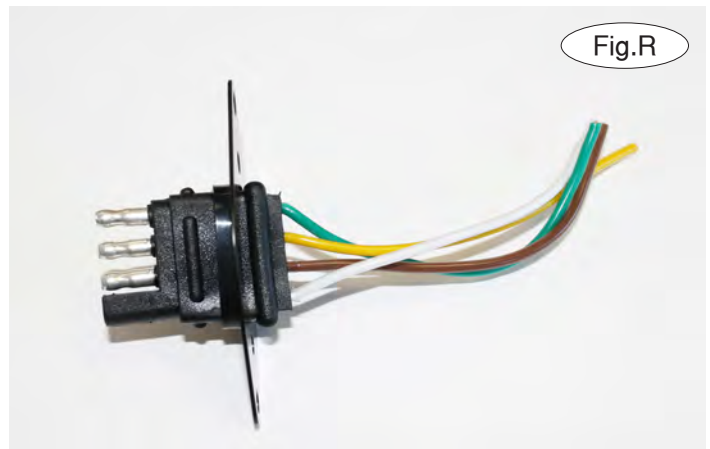


### Three options for attaching the wiring plug to the main receiver brace

**For six-wire plugs:** use the two supplied 3/4" self-tapping screws to attach the electrical plug directly to the rods on the front of the main receiver brace.

**For four-wire round plugs:** attach to the plug mounting plate and then use the two supplied 3/4" self-tapping screws to attach the mounting plate to the rods on the front of the main receiver brace.

**For four-wire flat plugs:** place the plug through the mounting plug plate, and then secure it using the supplied zip tie on the front of the plug (Fig.R). Use the two supplied 3/4" self-tapping screws to attach the mounting plate to the rods on the front of the main receiver brace.



### BOLT TORQUE REQUIREMENTS

Note: The torque values represented below are intended as general guidelines. Torque requirements for specific applications may vary. Roadmaster does not warrant this information to be accurate for all applications and disclaims all liability for any claims or damages which may result from its use.

#### STANDARD BOLTS

Thread Size	Grade	Torque
5/16-18	5	13 ft./lb.
3/8-16	5	23 ft./lb.
7/16-14	5	37 ft./lb.
1/2-13	5	57 ft./lb.
5/8-11	5	112 ft./lb.

#### METRIC BOLTS

Thread Size	Grade	Torque
6mm-1.0	8.8	6 ft./lb.
8mm-1.0	8.8	18 ft./lb.
8mm-1.25	8.8	16 ft./lb.
10mm-1.25	8.8	36 ft./lb.
10mm-1.5	8.8	31 ft./lb.

#### METRIC BOLTS

Thread Size	Grade	Torque
12mm-1.25	8.8	64 ft./lb.
12mm-1.5	8.8	60 ft./lb.
12mm-1.75	8.8	55 ft./lb.
14mm-2.0	8.8	88 ft./lb.

All illustrations and specifications contained herein are based on the latest information available at the time of publication approval. ROADMASTER, INC. reserves the right to make changes at any time without notice in material, specification and models or to discontinue models.