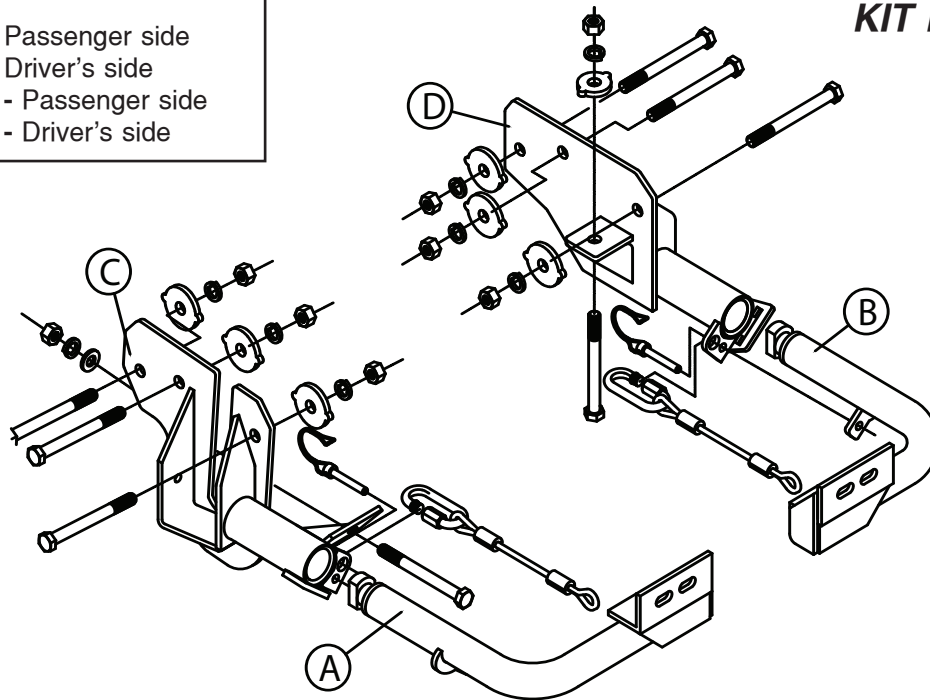


# MOUNTING BRACKET KIT INSTALLATION INSTRUCTIONS

## PARTS LIST:

- 1- FRONT BRACE (A) - Passenger side
- 1- FRONT BRACE (B) - Driver's side
- 1- MAIN RECEIVER (C) - Passenger side
- 1- MAIN RECEIVER (D) - Driver's side

KIT NO. 521227-1



12/12/12

**IMPORTANT:** All brackets **must** be assembled with all the bolts left loose for final adjustment and positioning (before tightening) unless otherwise instructed. All bolts **must** be torqued for proper strength. If more than one bolt is used per fastening point, the diagram may only show one.

- Use flat washers over all slotted holes
- Use lock washers on all fasteners

ROADMASTER Limited Warranty, including One-Year Conditional Warranty Text and Product Registration Card, in Carton.

## WARNING

Failure to follow these instructions can result in property damage, personal injury or even death.

- Installation of most mounting brackets requires moderate mechanical aptitude and skills. We strongly recommend professional installation by an experienced installer.
- The installer must read the instructions and use all bolts and parts supplied. Failure to do so could result in loss of the towed vehicle.
- Use Loctite® Red on all bolts used for mounting this bracket.
- Do not use this document for custom fabrication, as it may not show all parts or structural components. Custom fabrication or an attempt to copy this bracket design could result in loss of the towed vehicle.
- Every 3,000 miles, the owner must inspect the fasteners for proper torque, according to the bolt torque requirements chart on the last page of these instructions. The owner must also inspect all mounts and brackets for cracks or other signs of fatigue every 3,000 miles. Failure to do so could result in loss of the towed vehicle.
- The owner must check the vehicle manufacturer's instructions for the proper procedure(s) to prepare the vehicle for towing. Some vehicles must be equipped with a transmission lube pump, an axle disconnect, driveline disconnect or free-wheeling hubs before they can be towed. Failure to properly equip the vehicle will cause severe damage to the transmission.
- If running changes were made by the vehicle manufacturer after this bracket was designed, some bolts or other fasteners in the hardware pack may no longer be the correct size. It is the installer's responsibility to verify that the bracket is securely fastened to the vehicle and fitted with the correct hardware to account for these changes. Failure to securely

fasten the bracket could result in loss of the towed vehicle.

- If the towed vehicle has been in an accident, it must be properly repaired before attaching the bracket. Do not install the bracket if any structural frame damage is found. Failure to repair the damage could result in the loss of the towed vehicle.
- Some motorhome chassis have such a tight turning radius that you can damage your motorhome, towed vehicle, tow bar or bracket while turning sharply. Before getting on the road, test your turning radius in an empty parking lot. Turning too sharply could result in non-warranty damage to towing system, motorhome and/or towed vehicle.
- Do not back up with the towed vehicle attached or non-warranty damage will occur to your towing system, motorhome and/or towed vehicle.
- The safety cables must connect the towing vehicle to the towed vehicle frame to frame, with the cables crossed, with enough slack for sharp turns. Refer to the cable instructions for proper routing. Failure to leave enough slack in the safety cables, or failure to connect the safety cables frame to frame, will result in the loss of the towed vehicle.
- This bracket is designed for use with ROADMASTER tow bars and ROADMASTER adaptors only. Using this bracket with other brands, without an approved ROADMASTER adaptor, may result in non-warranty damage or injury.
- Upon final installation, the installer must inspect the bracket to ensure adequate clearance, particularly around hoses, air conditioner lines, radiators, etc., or non-warranty damage to the towed vehicle will result.
- This bracket is only warranted for the original installation. Installing a used bracket on another vehicle is not recommended and will void the warranty.

# MOUNTING BRACKET KIT INSTALLATION INSTRUCTIONS

**KIT NO. 521227-1**

1. This is one of our EZ lock bracket series which allows the visible front portion of the brackets to be easily removed from the front of the car by rotating the front braces. The bracket kit consists of two main receiver braces, two tubular front braces, and a hardware pack. The rear receiver braces mount to the bottom of the sub frame and protrude through the lower grill below the headlights and the bumper. The front tubular braces are inserted into the rear braces and rotated 90 degrees to lock in place. The sides of the lower grille will have to be trimmed to fit around the tubular portion of the main braces or left off. The front bumper fascia will have to be removed to access the frame mounting area. Before starting the installation, lay out the kit components as it is illustrated. This will give you a visual idea of how the components work and also confirm that everything is present and accounted for.
2. **Important: please use all supplied bolts and parts and read all instructions carefully before beginning this installation. The majority of questions you may have can be answered within the text, and proper installation will ensure safe and secure travel.** Now, begin the installation by removing three plastic pop fasteners and a number 25 torx screw located in each front fender well. To remove these pop fasteners, press the center pin out with a small punch. Be sure and save the center pins with the fasteners for reinstallation. The torx screw is located inside the fender well near the junction of the upper corner of the fascia and the fender well.
3. Remove the upper grille by pulling forward on the top of the grille then lifting up and out. This will expose two number 30 torx bolts in board of each head light and three more in the top of the bumper fascia, remove all five.
4. Pull the two front lower side grilles forward and out. This will expose a number 30 torx bolt in each opening which needs to be removed.
5. Go to the bottom of the fascia and remove two number 25 torx screws on each side and four pop fasteners in the middle of the fascia.
6. Pull the fascia forward to disconnect the marker lights, then remove the fascia completely.
7. Starting with the passenger side, unbolt the side and front horn including the front horn bracket. Push the black vacuum canister up to release it from its mount and pull out to provide clearance.
8. Take the passenger side receiver brace and insert behind the vacuum canister and air conditioning canister. Bolt through the front mounting hole and towing bracket with a 1/2" x 5" bolt, flat washer, lock washer and nut. Tighten enough to hold brace in position. Check the alignment, top of brace should be parallel to the top frame rail flange.
9. Using the brace as a drill template, drill three holes through both sides of the frame rail. Be sure to use a backer plate behind the frame rail when drilling.
10. Now bolt through the frame and brace with three 1/2" x 5" bolts, 1/2"plate washers, lock washers and nuts. *Note:* tighten these bolts enough to flatten the lock washers, about 35 ft. lb. Now tighten the front bolt, installed in step 8 to the torque specifications below.
11. Put the vacuum canister back in its holder and bolt the rear horn in position. The front horn will be attached to the bracket itself in the hole provided for the purpose. Keep the small horn attachment and hardware for replacement should the bracket ever be removed from the vehicle.

**12/12/12**

## BOLT TORQUE REQUIREMENTS

Note: The torque values represented below are intended as general guidelines. Torque requirements for specific applications may vary. Roadmaster does not warrant this information to be accurate for all applications and disclaims all liability for any claims or damages which may result from its use.

STANDARD BOLTS			METRIC BOLTS			METRIC BOLTS		
Thread Size	Grade	Torque	Thread Size	Grade	Plated / Unplated	Thread Size	Grade	Plated / Unplated
5/16.....	5.....	13 ft./lb.	8mm-1.0.....	8.8.....	20 ft./lb. 18 ft./lb.	12mm-1.25.....	8.8.....	70 ft./lb. 65 ft./lb.
3/8.....	5.....	23 ft./lb.	8mm-1.25.....	8.8.....	19 ft./lb. 18 ft./lb.	12mm-1.5.....	8.8.....	.66 ft./lb. 61 ft./lb.
7/16.....	5.....	37 ft./lb.	10mm-1.25.....	8.8.....	38 ft./lb. 36 ft./lb.	12mm-1.75.....	8.8.....	65 ft./lb. 60 ft./lb.
1/2.....	5.....	56 ft./lb.	10mm-1.5.....	8.8.....	37 ft./lb. 35 ft./lb.	14mm-2.0.....	8.8.....	104 ft./lb. 97 ft./lb.
5/8.....	5.....	150 ft./lb.						

# MOUNTING BRACKET KIT INSTALLATION INSTRUCTIONS

**KIT NO. 521227-1**

12. Go to the drivers side and hold the driver's side receiver brace in position against the bottom and side of the frame. Check the alignment, make sure that the top of the plate is parallel and matches the passenger side. The front and back of the mounting plate should be in the same position behind the bumper core on both sides. Once this is achieved, clamp in position and drill four 1/2" holes through the frame, three in the side and one in the bottom using the brace as a drill template. Use a backing plate when drilling to prevent damage.
13. Bolt through the brace and the frame with the supplied 1/2" x 5" bolts, plate washers, lock washers and nuts. Note: Tighten these bolts enough to flatten the lock washers, about 35 ft. lb.
14. Reinstall the bumper fascia and grille reversing steps 2 through 6. \
15. Install the front braces by inserting with front braces vertical to the ground, push in and twist down to lock in place. Once locked in and parallel to the ground. Install safety pins.
16. At this point, decide whether to reinstall the lower grilles by trimming to fit or leaving off and saving for reinstallation at a later date. If you want to reinstall, trim the grilles to fit around the braces and snap back in.
17. Mount the tow bar according to the tow bar manufacturers instructions. Install the 10" safety cables to the side of the main receiver portion of the bracket with quick links provided. Attach the other end to the tow vehicle's safety cables.

**Hardware list**

- 8- 1/2" x 5" bolts
- 1- 1/2" flat washer
- 8- 1/2" nuts
- 8- 1/2" lock washers
- 7- 1/2" plate washers
- 2- 10" safety cables
- 2- quick links
- 2- pins

**12/12/12**

### BOLT TORQUE REQUIREMENTS

Note: The torque values represented below are intended as general guidelines. Torque requirements for specific applications may vary. Roadmaster does not warrant this information to be accurate for all applications and disclaims all liability for any claims or damages which may result from its use.

STANDARD BOLTS			METRIC BOLTS			METRIC BOLTS		
Thread Size	Grade	Torque	Thread Size	Grade	Plated / Unplated	Thread Size	Grade	Plated / Unplated
5/16.....	5.....	13 ft./lb.	8mm-1.0 .....	8.8 .....	20 ft./lb. 18 ft./lb.	12mm-1.25 .....	8.8 .....	70 ft./lb. 65 ft./lb.
3/8.....	5.....	23 ft./lb.	8mm-1.25 .....	8.8 .....	19 ft./lb. 18 ft./lb.	12mm-1.5 .....	8.8 .....	.66 ft./lb. 61 ft./lb.
7/16.....	5.....	37 ft./lb.	10mm-1.25 .....	8.8 .....	38 ft./lb. 36 ft./lb.	12mm-1.75 .....	8.8 .....	65 ft./lb. 60 ft./lb.
1/2.....	5.....	56 ft./lb.	10mm-1.5 .....	8.8 .....	37 ft./lb. 35 ft./lb.	14mm-2.0 .....	8.8 .....	104 ft./lb. 97 ft./lb.
5/8.....	5.....	150 ft./lb.						

All illustrations and specifications contained herein are based on the latest information available at the time of publication approval. ROADMASTER, INC. reserves the right to make changes at any time without notice in material, specification and models or to discontinue models.