



MOUNTING BRACKET KIT INSTALLATION INSTRUCTIONS

KIT# 3167-3
06/16/14

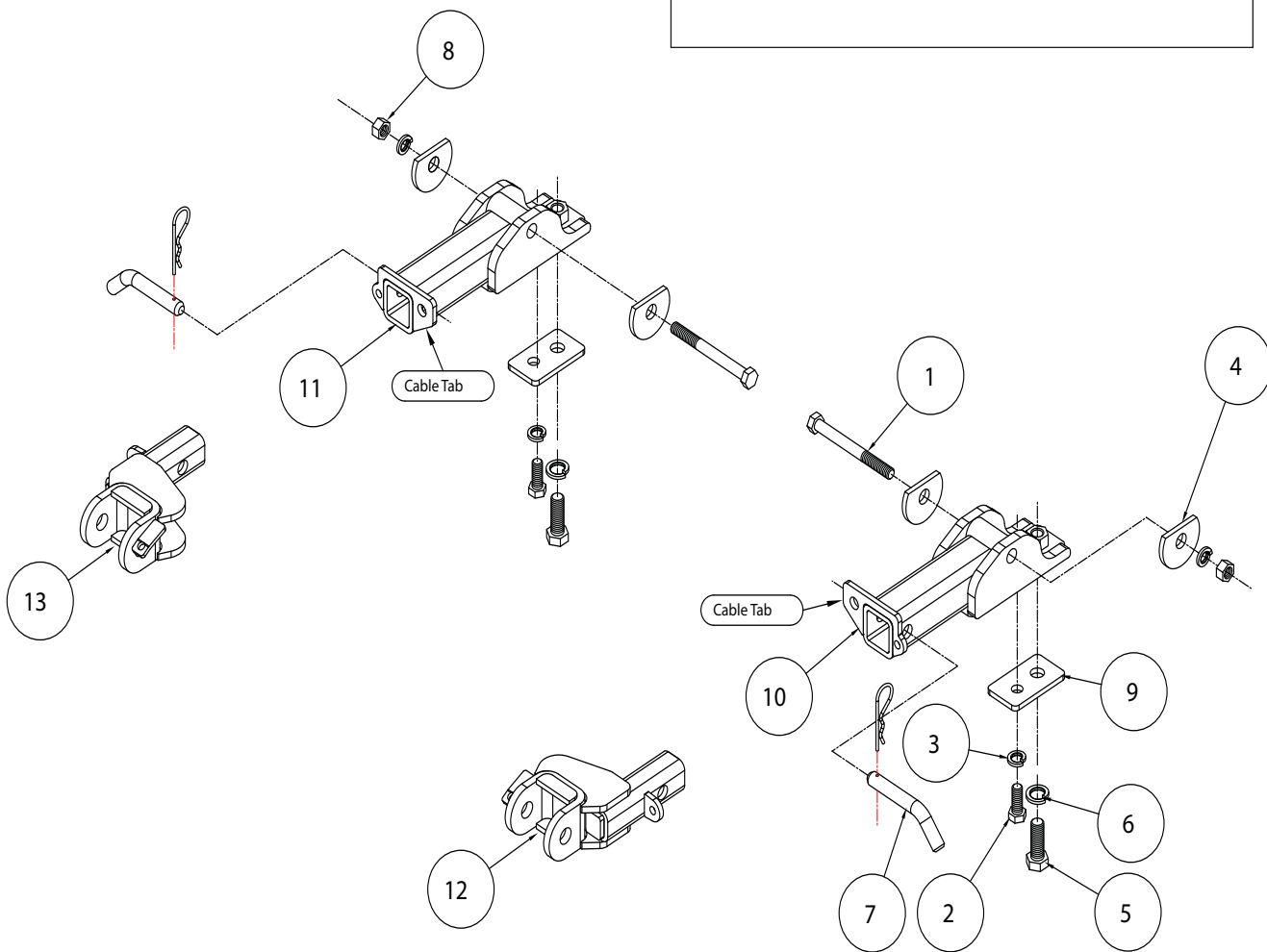
Important

Note: this bracket will not accommodate the Guardian rock shield, some models of the Tow Defender, Stowaway or the StowMaster and StowMaster All Terrain tow bars.

Warning

Maximum weight capacity – 10,000 pounds.

Failure to follow these instructions may cause bracket failure, resulting in property damage, personal injury or even death.



ITEM	QTY	NAME	MATERIAL
1	2	1/2" x 5" BOLT	350107-00
2	2	1/2" x 1 3/4" BOLT	350096-00
3	4	1/2" LOCK WASHER	350309-00
4	4	CLIPPED PLATE WASHER	A-002687
5	2	5/8" x 1 3/4" BOLT	350149-00
6	2	5/8" LOCK WASHER	350313-00
7	2	DRAW PIN W/ CLIP	357035-00
8	2	1/2" HEX NUT	350258-00
9	2	1/4" X 2" X 3 1/2" - 2 HOLE BACKING PLATE	A-003404
10	1	DRIVER SIDE RECEIVER	C-002094
11	1	PASSENGER SIDE RECEIVER	C-002095
12	1	DRIVER SIDE ARM	C-002455
13	1	PASSENGER SIDE ARM	C-002456



MOUNTING BRACKET KIT INSTALLATION INSTRUCTIONS

KIT# 3167-3

06/16/14

This is one of our MX series brackets, which allows the visible front portion of the bracket to be easily removed from the front of the vehicle (Fig.A and Fig.B). The bracket consists of a main receiver brace, two removable front braces and a hardware pack.

The main receiver brace mounts to the frame rails. The removable front braces install in the main receiver brace.

Before starting the installation, lay out the kit components in order, as they will be used. This will give you a visual idea of how the components work, and will also confirm that everything is present and accounted for.



Fig.A



Fig.B

IMPORTANT: All brackets **must** be assembled with all the bolts left loose for final adjustment and positioning (before tightening) unless otherwise instructed. All bolts **must** be torqued for proper strength. If more than one bolt is used per fastening point, the diagram may only show one.

- Use flat washers over all slotted holes
- Use lock washers on all fasteners

ROADMASTER Limited Warranty, including One-Year Conditional Warranty Text and Product Registration Card, in Carton.

WARNING

Failure to follow these instructions can result in property damage, personal injury or even death.

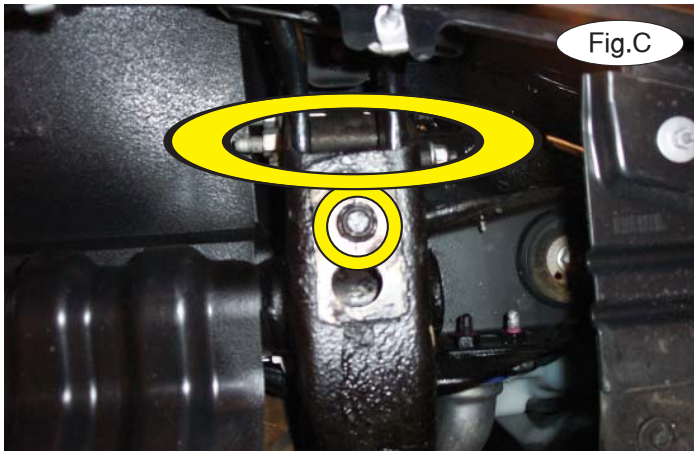
- Installation of most mounting brackets requires moderate mechanical aptitude and skills. We strongly recommend professional installation by an experienced installer.
- The installer must read the instructions and use all bolts and parts supplied. Failure to do so could result in loss of the towed vehicle.
- Use Loctite® Red on all bolts used for mounting this bracket.
- Every 3,000 miles, the owner must inspect the fasteners for proper torque, according to the bolt torque requirements chart on the last page of these instructions. The owner must also inspect all mounts and brackets for cracks or other signs of fatigue every 3,000 miles. Failure to do so could result in loss of the towed vehicle.
- The owner must check the vehicle manufacturer's instructions for the proper procedure(s) to prepare the vehicle for towing. Some vehicles must be equipped with a transmission lube pump, an axle disconnect, driveline disconnect or free-wheeling hubs before they can be towed. Failure to properly equip the vehicle will cause severe damage to the transmission.
- If running changes were made by the vehicle manufacturer after this bracket was designed, some bolts or other fasteners in the hardware pack may no longer be the correct size. It is the installer's responsibility to verify that the bracket is securely fastened to the vehicle and fitted with the correct hardware to account for these changes. Failure to securely fasten the bracket could result in loss of the towed vehicle.
- If the towed vehicle has been in an accident, it must be properly repaired before attaching the bracket. Do not install the bracket if any structural frame damage is found. Failure to repair the damage could result in the loss of the towed vehicle.
- Roadmaster manufactures many styles of brackets. If your bracket has removable arms, they must be removed before driving the vehicle, unless the arms can be pinned or padlocked in place. If not secured, the arms could vibrate out, resulting in non-warranty damage or personal injury.
- Some motorhome chassis have such a tight turning radius that you can damage your motorhome, towed vehicle, tow bar or bracket while turning sharply. Before getting on the road, test your turning radius in an empty parking lot. Turning too sharply could result in non-warranty damage to towing system, motorhome and/or towed vehicle.
- Do not back up with the towed vehicle attached or non-warranty damage will occur to your towing system, motorhome and/or towed vehicle.
- The safety cables must connect the towing vehicle to the towed vehicle frame to frame, with the cables crossed, with enough slack for sharp turns. Refer to the cable instructions for proper routing. Failure to leave enough slack in the safety cables, or failure to connect the safety cables frame to frame, will result in the loss of the towed vehicle.
- This bracket is designed for use with ROADMASTER tow bars and ROADMASTER adaptors only. Using this bracket with other brands, without an approved ROADMASTER adaptor, may result in non-warranty damage or injury.
- Do not use this document for custom fabrication, as it may not show all parts or structural components. Custom fabrication or an attempt to copy this bracket design could result in loss of the towed vehicle.
- Upon final installation, the installer must inspect the bracket to ensure adequate clearance, particularly around hoses, air conditioner lines, radiators, etc., or non-warranty damage to the towed vehicle will result.
- This bracket is only warranted for the original installation. Installing a used bracket on another vehicle is not recommended and will void the warranty.



MOUNTING BRACKET KIT INSTALLATION INSTRUCTIONS

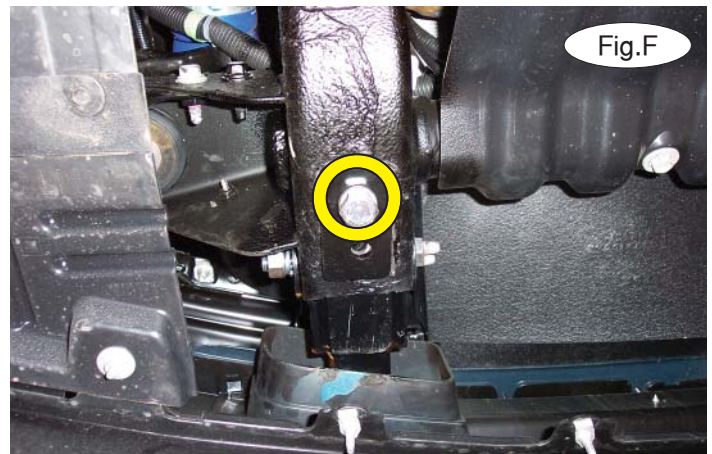
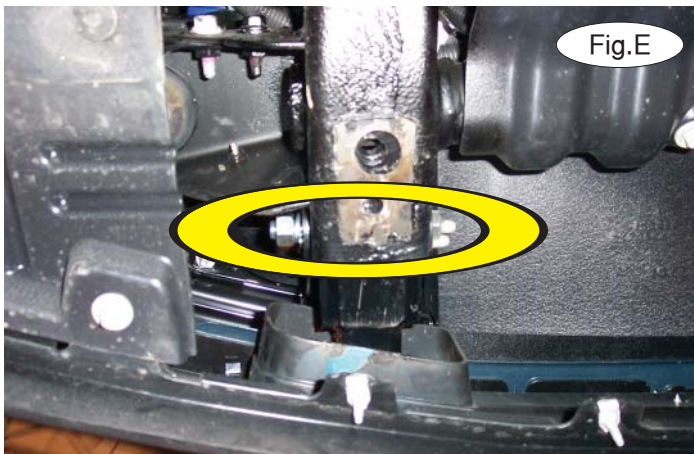
KIT# 3167-3

06/16/14



1. **Important:** please use all supplied bolts and parts and read all instructions carefully before beginning this installation. The majority of questions you may have can be answered within the text, and proper installation will ensure safe and secure travel. Now, begin the installation.

Starting on the driver's side, remove the tow hook by removing one 18mm bolt and nut going through the frame and one 18mm bolt on the bottom of the frame (Fig.C). Pull out to remove the tow hooks. *Note:* they will not be replaced. Retain the tow hooks and mounting hardware in case the bracket is ever removed.



2. Insert the main receiver brace through the tow hook opening and into the frame, aligning it with the two side and bottom holes in the frame (Fig.D).

3. Place one of the supplied 1/2" clipped plate washers over one of the supplied 1/2" x 5" bolts and bolt through the inside hole of the frame rail, main receiver brace and through the outside hole of the frame rail. Finish with a 1/2" clipped plate washer, lock washer and nut (Fig.E).

4. Place one of the supplied 5/8" lock washers over one of the supplied 5/8" x 1 3/4" bolts and bolt through the largest of the holes in one of the supplied 1/4" x 2 1/2" x 3 1/2" backing plates, and bolt through the rear hole in the bottom of the frame rail and into the 5/8" weld nut in the main receiver brace (Fig.F).



MOUNTING BRACKET KIT INSTALLATION INSTRUCTIONS

KIT# 3167-3

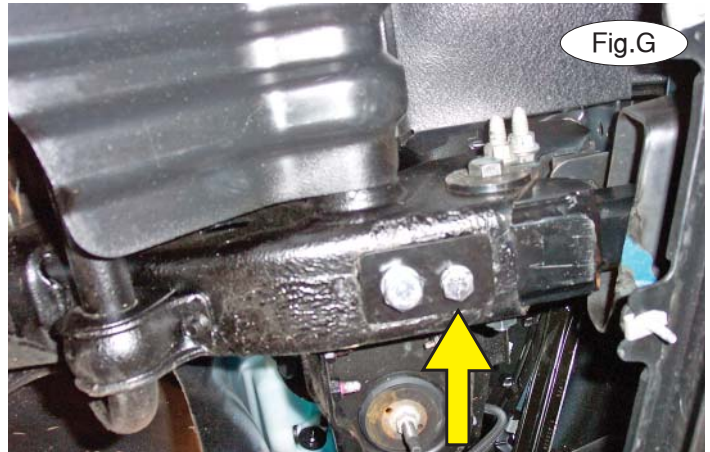
06/16/14

5. Place one of the supplied 1/2" lock washers over one of the supplied 1/2" x 1 3/4" bolts and bolt through the front hole in the frame rail and into the 1/2" weld nut in the main receiver brace (Fig.G).

6. Now, repeat steps 1 through 5 for the passenger side of the vehicle. Starting with the two bolts on the bottom of the frame rail, torque all bolts to the bolt torque requirements found at the end of this document.

7. Insert the removable front bracket arms into the front receiver braces.

8. Connect the safety cables to the safety cable tabs as illustrated on the first page of these instructions.



⚠ Warning
Maximum weight capacity – 10,000 pounds.

Failure to follow these instructions may cause bracket failure, resulting in property damage, personal injury or even death.

BOLT TORQUE REQUIREMENTS

Note: The torque values represented below are intended as general guidelines. Torque requirements for specific applications may vary. Roadmaster does not warrant this information to be accurate for all applications and disclaims all liability for any claims or damages which may result from its use.

STANDARD BOLTS

Thread Size	Grade	Torque
5/16.....	5.....	13 ft./lb.
3/8.....	5.....	23 ft./lb.
7/16.....	5.....	37 ft./lb.
1/2.....	5.....	56 ft./lb.
5/8.....	5.....	150 ft./lb.

METRIC BOLTS

Thread Size	Grade	Plated / Unplated
8mm-1.0	8.8	20 ft./lb. 18 ft./lb.
8mm-1.25	8.8	19 ft./lb. 18 ft./lb.
10mm-1.25	8.8	38 ft./lb. 36 ft./lb.
10mm-1.5	8.8	37 ft./lb. 35 ft./lb.

METRIC BOLTS

Thread Size	Grade	Plated / Unplated
12mm-1.25	8.8	70 ft./lb. 65 ft./lb.
12mm-1.5	8.8	66 ft./lb. 61 ft./lb.
12mm-1.75	8.8	65 ft./lb. 60 ft./lb.
14mm-2.0	8.8	104 ft./lb. 97 ft./lb.