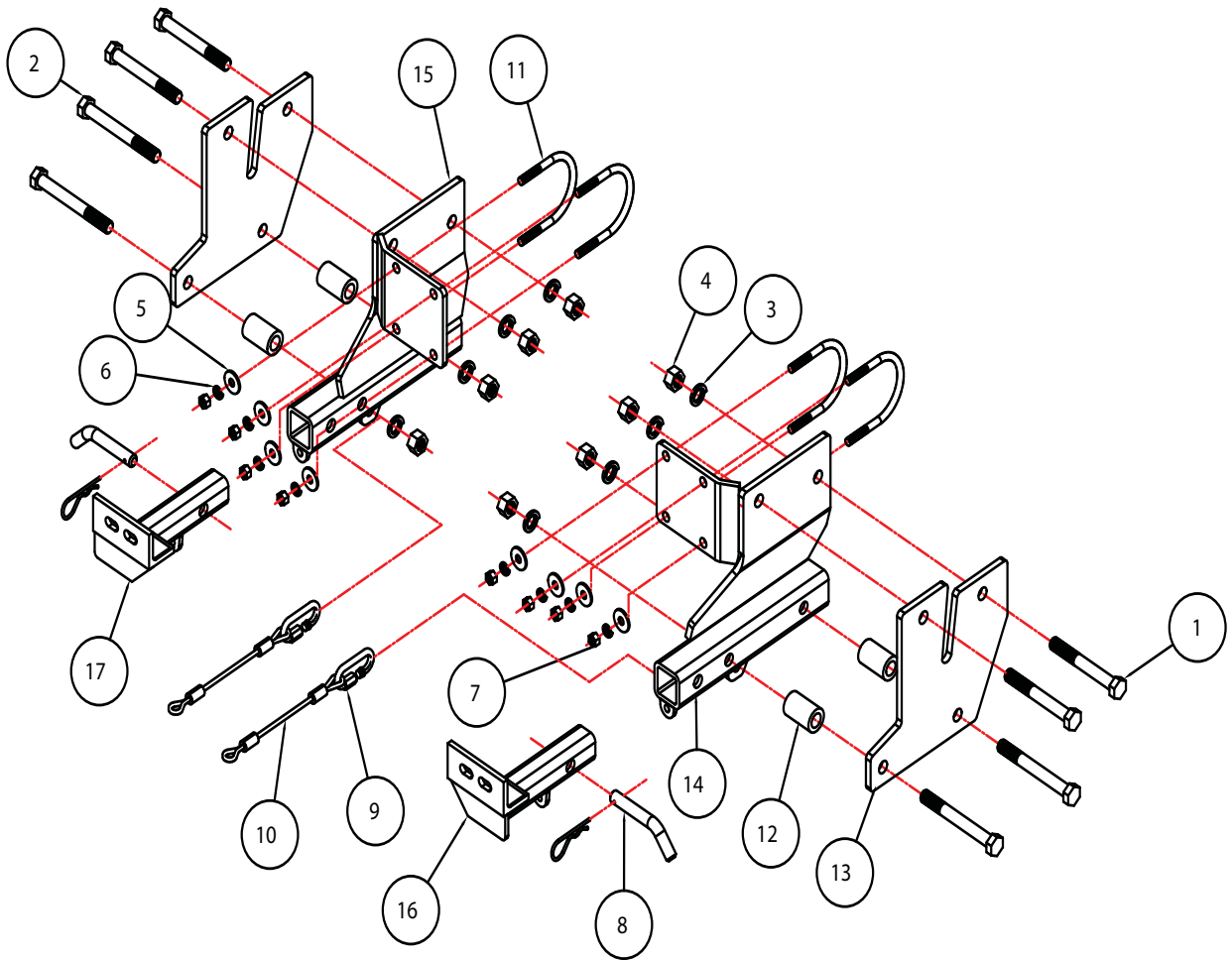




# MOUNTING BRACKET KIT INSTALLATION INSTRUCTIONS

**KIT# 3152-1**  
02/20/13



Item	Qty	Description	Part No.
1.....	4.....	5/8" x 5" BOLT.....	350160-00
2.....	4.....	5/8" x 5 1/2" BOLT.....	350161-00
3.....	8.....	5/8" LOCK WASHER.....	350313-00
4.....	8.....	5/8" NUT.....	350262-00
5.....	8.....	3/8" FLAT WASHER.....	350304-50
6.....	8.....	3/8" LOCK WASHER.....	350305-00
7.....	8.....	3/8" NUT.....	350254-00
8.....	2.....	5/8" DRAW PINS W/ CLIP.....	357035-00
9.....	2.....	QUICK LINK.....	200008-00
10.....	2.....	12" SAFETY CABLE.....	650648-12
11.....	4.....	3/8" U-BOLT.....	357024-00
12.....	4.....	1 1/4" x 0.25" WALL x 2" PIPE SPACER.....	A-000792
13.....	2.....	SIDE PLATE.....	A-002439
14.....	1.....	DRIVER SIDE RECEIVER.....	C-001564
15.....	1.....	PASSENGER SIDE RECEIVER.....	C-001565
16.....	1.....	DRIVER SIDE ARM.....	C-001307
17.....	1.....	PASSENGER SIDE ARM.....	C-001308



# MOUNTING BRACKET KIT INSTALLATION INSTRUCTIONS

**KIT# 3152-1**

02/20/13

This is one of our XL series brackets, which allows the visible front portion of the bracket to be easily removed from the front of the vehicle (Fig.A and Fig.B). The bracket kit consists of a passenger and driver side main receiver brace, two side braces, two removable front bracket arms and a hardware pack. The main receiver braces mount to the frame rails, rear brace and the sway bar. The rear braces mount to the frame, the frame cross member and the side braces. The side braces mount to the main receiver braces and the removable front brackets install in the main receiver braces.

Before starting the installation, lay out the kit components in order, as they will be used. This will give you a visual idea of how the components work, and will also confirm that everything is present and accounted for.



Fig.A



Fig.B

**IMPORTANT:** All brackets *must* be assembled with all the bolts left loose for final adjustment and positioning (before tightening) unless otherwise instructed. All bolts *must* be torqued for proper strength. If more than one bolt is used per fastening point, the diagram may only show one.

- Use flat washers over all slotted holes
- Use lock washers on all fasteners

ROADMASTER Limited Warranty, including One-Year Conditional Warranty Text and Product Registration Card, in Carton.

## WARNING

Failure to follow these instructions can result in property damage, personal injury or even death.

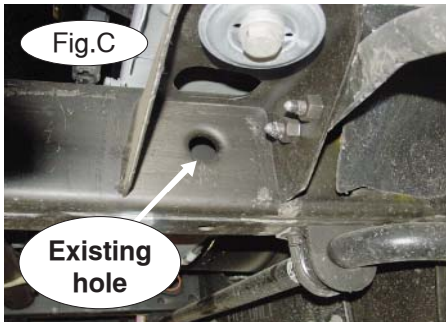
- **Installation of most mounting brackets requires moderate mechanical aptitude and skills.** We strongly recommend professional installation by an experienced installer.
- **The installer must read the instructions and use all bolts and parts supplied.** Failure to do so could result in loss of the towed vehicle.
- **Use Loctite® Red** on all bolts used for mounting this bracket.
- **Every 3,000 miles, the owner must inspect the fasteners** for proper torque, according to the bolt torque requirements chart on the last page of these instructions. **The owner must also inspect all mounts and brackets for cracks or other signs of fatigue every 3,000 miles.** Failure to do so could result in loss of the towed vehicle.
- **The owner must check the vehicle manufacturer's instructions for the proper procedure(s) to prepare the vehicle for towing.** Some vehicles must be equipped with a transmission lube pump, an axle disconnect, driveline disconnect or free-wheeling hubs before they can be towed. Failure to properly equip the vehicle will cause severe damage to the transmission.
- **If running changes were made** by the vehicle manufacturer after this bracket was designed, some bolts or other fasteners in the hardware pack may no longer be the correct size. **It is the installer's responsibility** to verify that the bracket is securely fastened to the vehicle and fitted with the correct hardware to account for these changes. Failure to securely fasten the bracket could result in loss of the towed vehicle.
- If the towed vehicle has been in an accident, it must be properly repaired before attaching the bracket. **Do not install the bracket if any structural frame damage is found.** Failure to repair the damage could result in the loss of the towed vehicle.
- Roadmaster manufactures many styles of brackets. **If your bracket has removable arms, they must be removed before driving the vehicle, unless the arms can be pinned or padlocked in place.** If not secured, the arms could vibrate out, resulting in non-warranty damage or personal injury.
- Some motorhome chassis have such a tight turning radius that you can damage your motorhome, towed vehicle, tow bar or bracket while turning sharply. **Before getting on the road, test your turning radius in an empty parking lot.** Turning too sharply could result in non-warranty damage to towing system, motorhome and/or towed vehicle.
- **Do not back up with the towed vehicle attached** or non-warranty damage will occur to your towing system, motorhome and/or towed vehicle.
- **The safety cables must connect the towing vehicle to the towed vehicle frame to frame, with the cables crossed, with enough slack for sharp turns.** Refer to the cable instructions for proper routing. Failure to leave enough slack in the safety cables, or failure to connect the safety cables frame to frame, will result in the loss of the towed vehicle.
- This bracket is designed for use with ROADMASTER tow bars and ROADMASTER adaptors only. **Using this bracket with other brands, without an approved ROADMASTER adaptor, may result in non-warranty damage or injury.**
- **Do not use this document for custom fabrication,** as it may not show all parts or structural components. Custom fabrication or an attempt to copy this bracket design could result in loss of the towed vehicle.
- Upon final installation, **the installer must inspect the bracket to ensure adequate clearance, particularly around hoses, air conditioner lines, radiators, etc.,** or non-warranty damage to the towed vehicle will result.
- **This bracket is only warranted for the original installation.** Installing a used bracket on another vehicle is not recommended and will void the warranty.



# MOUNTING BRACKET KIT INSTALLATION INSTRUCTIONS

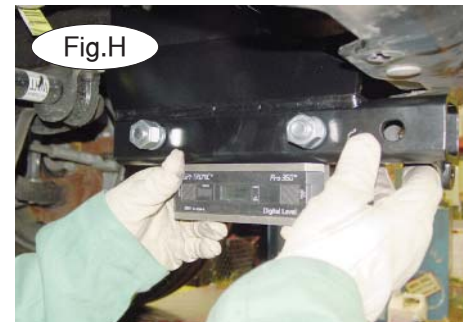
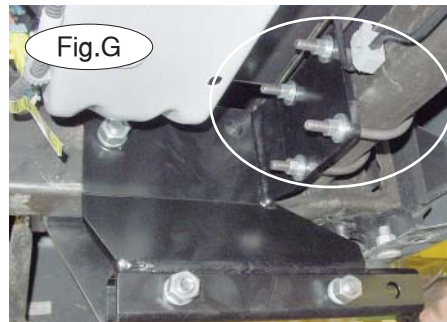
**KIT# 3152-1**

02/20/13



1. **Important:** please use all supplied bolts and parts and read all instructions carefully before beginning this installation. The majority of questions you may have can be answered within the text, and proper installation will ensure safe and secure travel. Now, begin the installation. Starting with the driver side inside plate, place the plate over the side of the frame and place the 5/8" x 5" bolt through the side plate and the existing hole in the side of the frame (Fig.C, D).

2. On the other side of the frame rail, place the driver's side main receiver brace over the end of the 5/8" x 5" bolt, and secure it in place with a lock washer and nut (Fig.E).

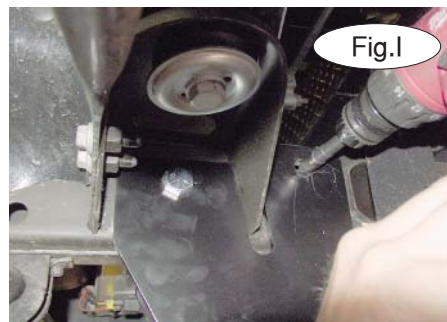


3. Now, bolt the side plate to the main receiver brace using the 5/8" x 5 1/2" bolts, 1 1/4" x 2" pipe spacers, lock washers and nuts (Fig.F). *Note:* place the pipe spacers between the main receiver brace and the side plate.

4. Next, bolt the main receiver brace to the round frame cross member using two 3/8" x 3 1/2" x 4 1/2" U-bolts, flat washers, lock washers and nuts (Fig.G).

5. Make sure the bracket is level (Fig.H). Tighten the U-bolts and the 5/8" bolt to the torque specifications listed at the end of these instructions.

6. Using the pre-drilled holes in the main receiver brace as a template, drill through both sides of the frame with a 5/8" drill bit (Fig.I). *Note:* center punch and drill a pilot hole first. Drill each side separately, through the pre-drilled holes.



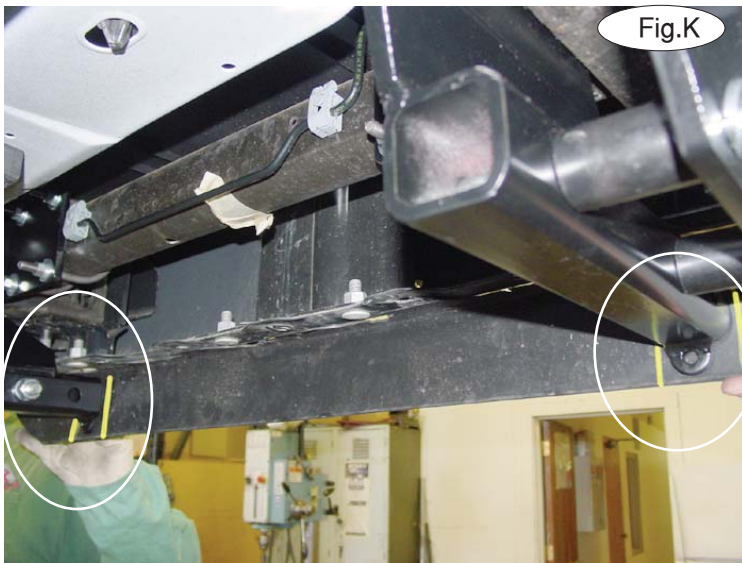
7. Now, bolt through the side plate, frame rail and the main receiver brace using a 5/8" x 5" bolt, lock washer and nut (Fig.J).



# MOUNTING BRACKET KIT INSTALLATION INSTRUCTIONS

**KIT# 3152-1**  
02/20/13

8. Repeat steps 1 through 7 for the passenger side.
9. Hold the air dam in place over the ends of the main receiver brace and mark from the back for trimming. Refer to the yellow marker lines in Figure K for correct trimming.
10. Insert the removable front bracket arms into the front receiver braces, and secure them in place with the supplied 5/8" draw pins and spring pins (Fig.L).
11. Attach the 12" safety cables with the cable connectors (Q-Links) to the front of the receiver braces (Fig.L).
12. Attach the ends of the safety cables to the tow vehicle's safety cables and tow bar.
13. Install the tow bar to the mounting bracket according to the manufacturer's instructions.



## BOLT TORQUE REQUIREMENTS

Note: The torque values represented below are intended as general guidelines. Torque requirements for specific applications may vary. Roadmaster does not warrant this information to be accurate for all applications and disclaims all liability for any claims or damages which may result from its use.

### STANDARD BOLTS

Thread Size	Grade	Torque
5/16.....	5.....	13 ft./lb.
3/8.....	5.....	23 ft./lb.
7/16.....	5.....	37 ft./lb.
1/2.....	5.....	56 ft./lb.
5/8.....	5.....	150 ft./lb.

### METRIC BOLTS

Thread Size	Grade	Plated / Unplated
8mm-1.0 .....	8.8 .....	20 ft./lb. 18 ft./lb.
8mm-1.25 .....	8.8 .....	19 ft./lb. 18 ft./lb.
10mm-1.25 .....	8.8 .....	38 ft./lb. 36 ft./lb.
10mm-1.5 .....	8.8 .....	37 ft./lb. 35 ft./lb.

### METRIC BOLTS

Thread Size	Grade	Plated / Unplated
12mm-1.25 .....	8.8 .....	70 ft./lb. 65 ft./lb.
12mm-1.5 .....	8.8 .....	66 ft./lb. 61 ft./lb.
12mm-1.75 .....	8.8 .....	65 ft./lb. 60 ft./lb.
14mm-2.0 .....	8.8 .....	104 ft./lb. 97 ft./lb.

All illustrations and specifications contained herein are based on the latest information available at the time of publication approval. ROADMASTER, INC. reserves the right to make changes at any time without notice in material, specification and models or to discontinue models.