

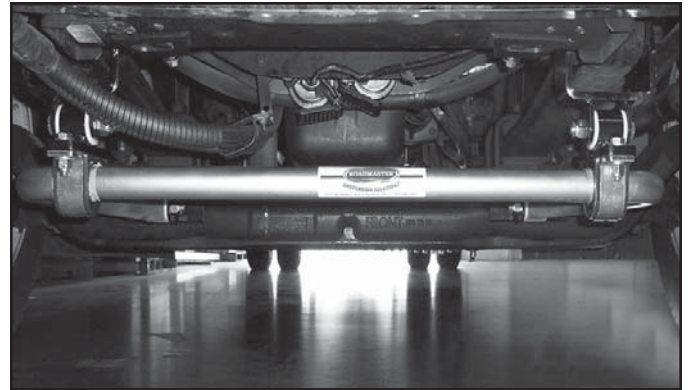


# Installation Instructions

Thank you for purchasing this anti-sway bar kit. Please read through these instructions before installation.

## Front Anti-Sway Bar Kit for the Navistar 4200, 4300, and 4400

part # 1179-121  
1½" diameter



## INTRODUCTION

Thank you for purchasing this front anti-sway bar kit. This kit is designed to improve the handling characteristics of your Navistar 4200, 4300 or 4400 by reducing the body roll and balancing the weight transfer during cornering. The anti-sway bar kit is engineered for long life and trouble-free performance. For maximum suspension control, use this kit along with our rear anti-sway bar kit. All the hardware needed for installation is included in this kit. Refer to the PARTS LIST in these instructions to identify the parts.

## SUGGESTED TOOLS

The following tools are suggested to complete the installation procedures:

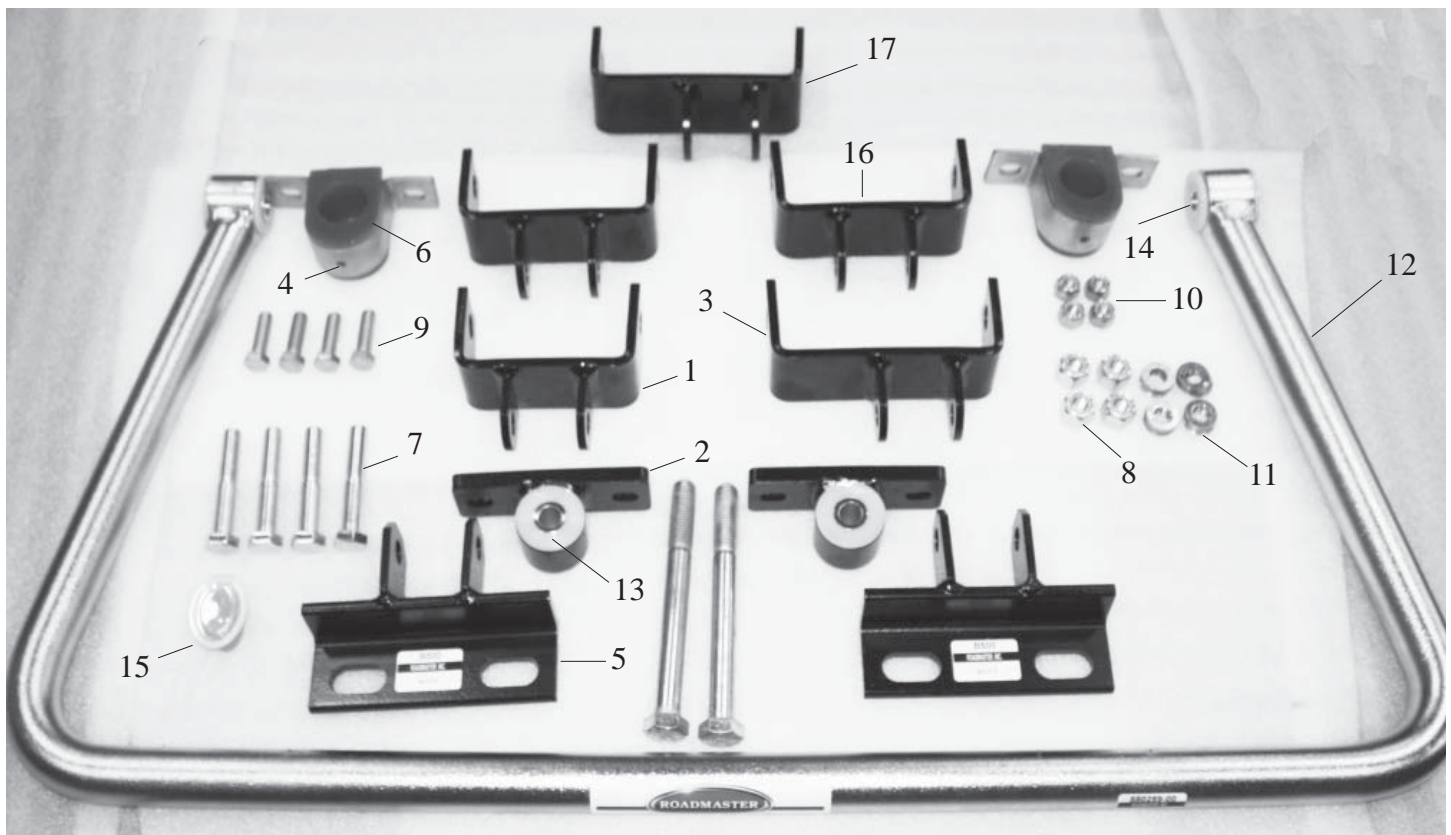
- General hand tools
- Jack stand
- Pry bar
- Torque wrench
- 5 ton jacks

### WARNING

**Failure to follow these instructions can result in property damage, personal injury or even death.**

- If raising the vehicle to install the anti-sway bar, always support the vehicle with jack stands at both frame rails or at the rear axle before working underneath. Ensure that the jack stands are securely positioned, and are rated at or above the weight of the vehicle.
- The installer must read the instructions and use all bolts and parts supplied. Use only the parts supplied by ROADMASTER to install this kit.
- Minor modifications are sometimes necessary due to slight vehicle variations, even for the same year, make and model.
- Regardless of year, make and model, a wide range of options for specific applications may or may not interfere with the installation. It is the installer's responsibility to make certain that equipment is not damaged once the suspension solution travels through the full range of motion. Failure to ensure adequate clearance could result in non-warranty property damage, personal injury or even death.
- If running changes were made by the manufacturer after this kit was designed, there may be weldments, braces, gussets, or other structural items which interfere with the installation. It is the installer's responsibility to allow for these running changes without sacrificing the structural integrity of the anti-sway bar. Failure to securely fasten the anti-sway bar could result in property damage, personal injury or even death.
- ROADMASTER will not be responsible for any damage or injury resulting from any modification or alteration.
- Check ALL the fasteners for tightness before and after road testing the vehicle.
- Do not use this document for custom fabrication, as it may not show all parts or structural components.
- Do not use an air impact wrench when re-installing bolts, as stripped threads may result.
- This anti-sway bar is only warranted for the original installation. Installing a used anti-sway bar on another vehicle is not recommended and will void the warranty.

## PARTS LIST



### Part #1179-121

Part #	Description	Qty
1 B660	Bracket	1
2 B661	Bracket	2
3 B673	Bracket	1
4 B141	Bushing Clamp	2
5 B500	Axle Bracket	2
6 205222-10	Bushing	2
7 350163-50	5/8" x 3 1/2" Capscrew	4
8 350263-00	5/8" NC Nylon Ins Ln Zp	4

\* not pictured

Part #	Description	Qty
9 350096-80	1/2" x 1 3/4" NC GD8 Zn	4
10 350735-00	1/2" Nylon Ins Ln Zp	4
11 350308-20	1/2" Flat washer	8
12 580259-00	Anti-sway bar	1
13 205209-00	Bushing	8
14 205503-00	Metal Sleeve	4
15 400011-30	Aqualube	1
16 B740	Bracket	2
17 B755	Bracket	1

# INSTALLATION

## 2 • Navistar 4200, 4300 and 4400 Front Anti-Sway Bar Kit

1. Support the front end with jack stands.

Note: you MUST unload the front suspension before you begin this installation.

2. Remove the bolt attaching the front end of the leaf spring and install the shackle hanger to the leaf spring mount B660 on each side (Figure 1).

Note: make certain that the B660 is 90 degrees to the frame or ground. Torque to the factory torque specs, which is approximately 450 ft.lbs. Note: due to the availability of various suspension packages, the passenger side may require brackets B673, B740 or B755.

3. Bolt the bushing clamp mount B661 to the shackle hanger.

Hang the axle brackets, and remove the nut from the U-bolts on the front side of the front axle on each side. Place the B500 bracket on each side and finger tighten it only at this time.

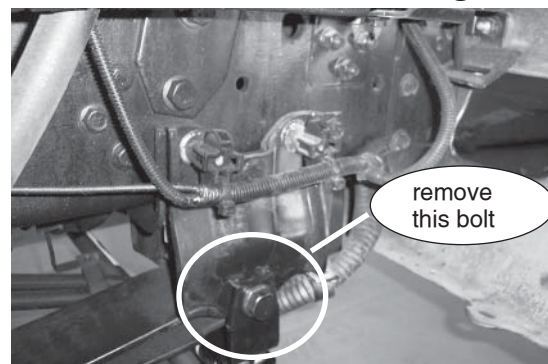
4. Install the split bushings on the anti-sway bar.

Lubricate the center hole of the split bushings with the grease provided. Install the bushings over the anti-sway bar near the arms. Install the saddle brackets over the bushings (Figure 2).

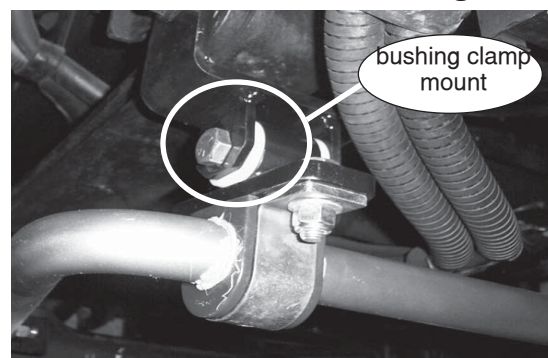
5. Place the anti-sway bar through the axle brackets (Figure 3).

Note: make certain that the bar and brackets are not rubbing the transmission cooler line. Tighten all bolts, and test drive the vehicle. Listen for any unusual noises, and make certain all the fasteners are tight.

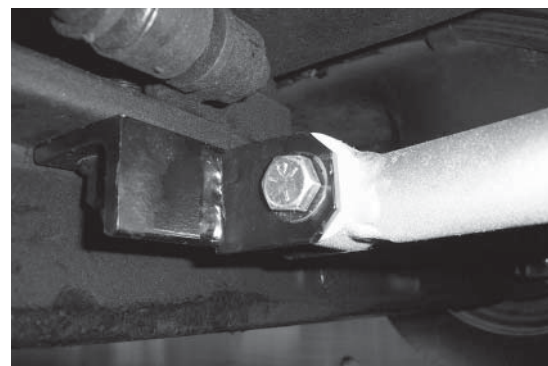
**Figure 1**



**Figure 2**



**Figure 3**



### **WARNING**

After road testing, re-check all fasteners for proper tightness — if a fastener has worked loose or fallen off, re-tighten or replace it. Without all kit components properly tightened or in place, the anti-sway bar will not stabilize the vehicle at full capacity, which may cause reduced cornering ability or other reductions in vehicle handling or performance.

Failure to follow these instructions may result in property damage, personal injury or even death.

### **WARNING**

#### **The anti-sway bar is not a load-bearing component**

Do not tow or hoist the vehicle using the anti-sway bar or its mounting brackets as attachment points. The anti-sway bar is not designed to carry the weight of the vehicle and may collapse, which will damage the anti-sway bar components, the suspension, or other components. The vehicle will detach or fall, which may cause severe personal injury.

Failure to follow these instructions may result in property damage, personal injury or even death.