

INSTALL INSTRUCTIONS

Jeep JK Rear Corner Skins

Product : JK200,JK201,JK202,JK203

Application : 2007+ Jeep Wrangler JK

(2 Door and 4 Door)

⚠ WARNING

Read the instructions completely before beginning installation. Before tightening bolts, drilling or cutting where required, check to make sure there are no obstructions such as brake, fuel or electrical lines which may be damaged. Also keep in mind this is an after-market product and MAY require minor shimming and/or trimming, reaming, etc. for proper fit. Road Armor is not responsible for any damages to vehicle.

ⓘ IMPORTANT NOTICE

- Be sure to inspect and test fit your product to ensure proper fitment before having it coated, painted, bed lined, etc.
- Road Armor will not be responsible for the cost of coating your unit if any problems with fit or finish are not noted and addressed beforehand.

SAFETY FIRST!

- FOLLOW ALL INSTRUCTIONS, YOUR SAFETY AND THE SAFETY OF OTHERS IS MOST IMPORTANT.
- WEAR APPROPRIATE EYE PROTECTION AND EXERCISE CAUTION WHEN DRILLING / CUTTING

REQUIRED TOOLS

Metric and SAE Socket Sets and Wrenches

Pry Bar or Large Flathead Screwdriver

Welding Clamps (recommended)

Drill and Center Punch Tool

7/16" Drill Bit

Rust Inhibiting Paint or RTV Silicone

T27 Socket Bit

Small Pin Punch or Straight Pick Tool

Body Panel Retainer Remover

Razor Blade Knife

INCLUDED HARDWARE

JK200, JK201, JK202, JK203

(40) 3/8"-16x1" Button Head Bolts

(4) 3/8"-16x1.75" Button Head Bolts

(4) 3/8"-16x2.25" Button Head Bolts

(72) 3/8" Washers

(30) 3/8"-16 Lock Nuts

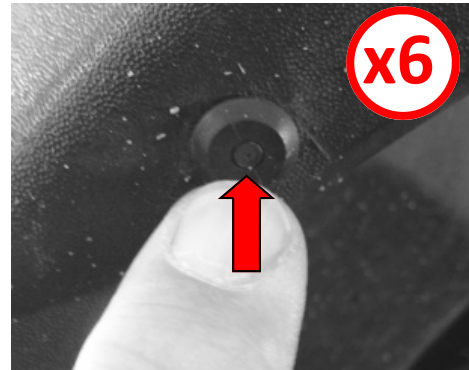
(2) Top Side Nut Flanges (Driver & Passenger)

(2) Small Nut Tabs for Rear Corner

1 Remove License Plate Holder on Driver Side.

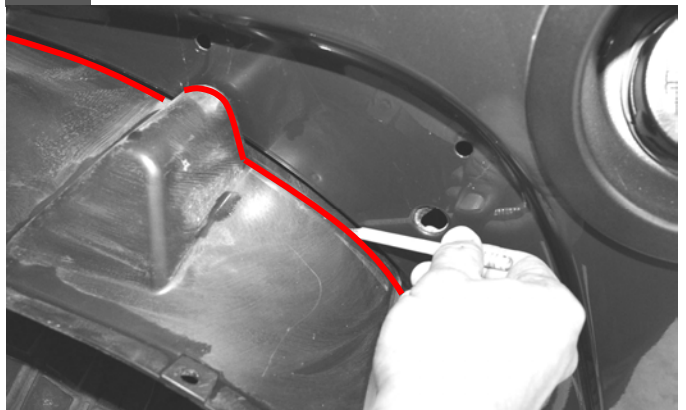
2 Using a pin punch, small screw driver, straight pick tool, awl or scribe, push in center of the 6 plastic clips around rim of fender to release them.

Then use a panel clip pliers or pry tool to grab the clip from behind and remove. A flat wedge pry bar or dykes will work in a pinch if you don't have the proper tool.

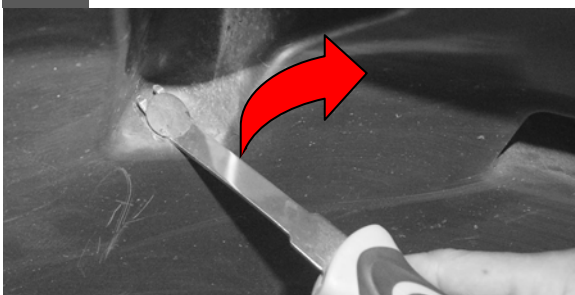


3 Remove Factory Flare by pulling sharply from the front corner by the door upward and outward.

It really is easier than you think and don't be alarmed by the popping sounds.



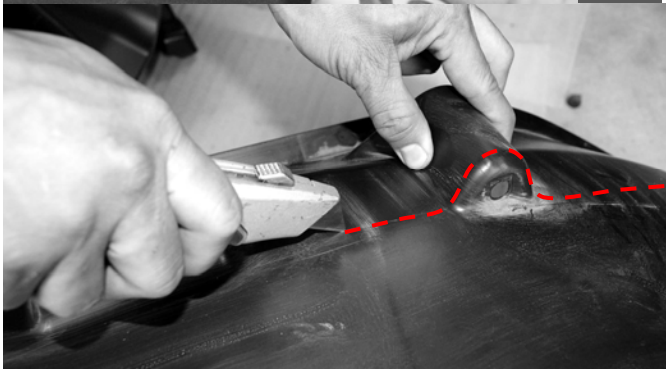
4 Mark the inner fender well plastic where it sticks out from the body using a pencil, sharpie or paint pen, you will be trimming the excess plastic in the next step so grab a razor blade and some shears.



5 You will want to remove the plastic retainers with a panel clip pry tool like in step 2 to make trimming easier.

Then proceed to cut away excess plastic.

If you have no intention to re-use the inner fender well, this step can be skipped. Discard plastic.

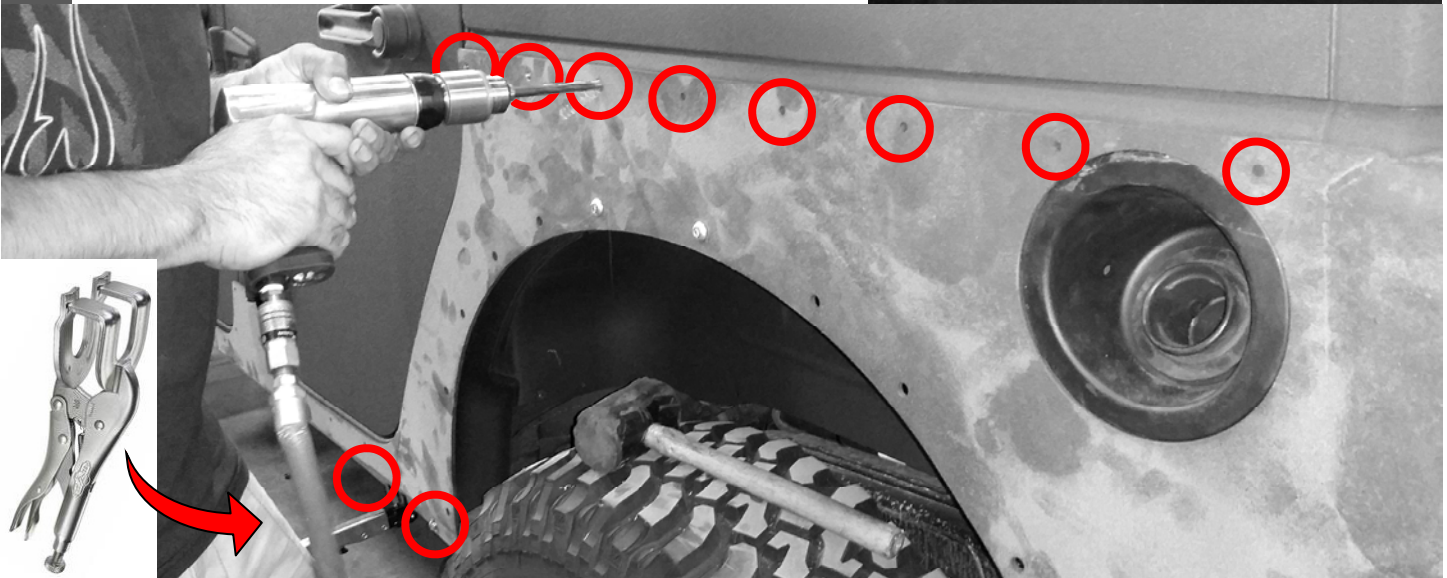
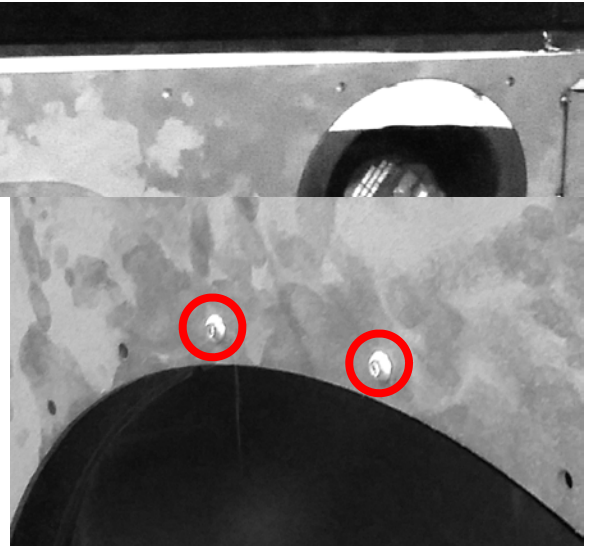


- 6** Tape off where the rockers may come into contact with the body to protect from scratching the body. You may choose to put tape on the body, or against the back edge of the skins, or both.

- 7** Fit up the Rear Corner Skin as below starting with the Driver Side. Note the taped off areas.

Insert two (x2) of the 2.25" long 3/8-16 bolts in the middle of the fender where the factory holes line up as indicated by the two red circles.

- 8** Use clamp to hold skins in place at the pinch seam.



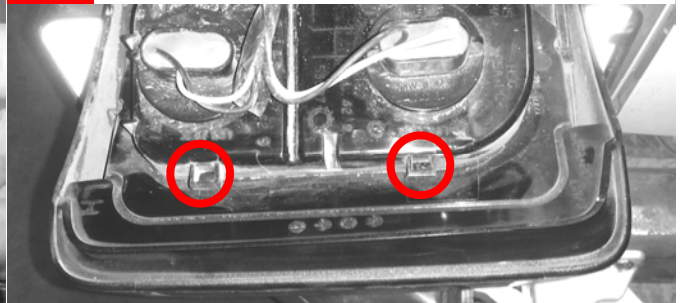
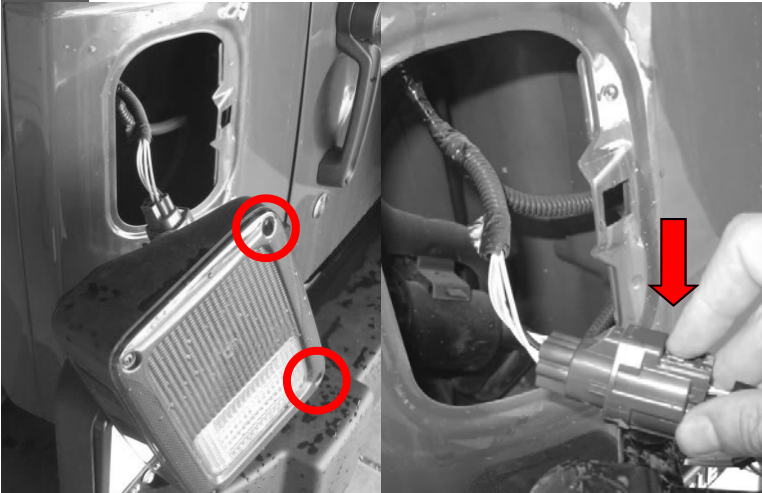
- 9** Begin drilling the holes across the top, back and pinch seam using a 7/16-in drill bit. Around the Tail Lights there are 3 holes on the driver side and 2 on the passenger side to be drilled which require passing the drill bit through two layers of steel to reach the Tail Light cavity.

- 10** Once all holes have been drilled through, remove the Rear Corner Skin.
To prevent rust, apply a bead of RTV silicone, or paint the raw steel inside each drilled hole.

- 11** Repeat this process now for the Passenger side.

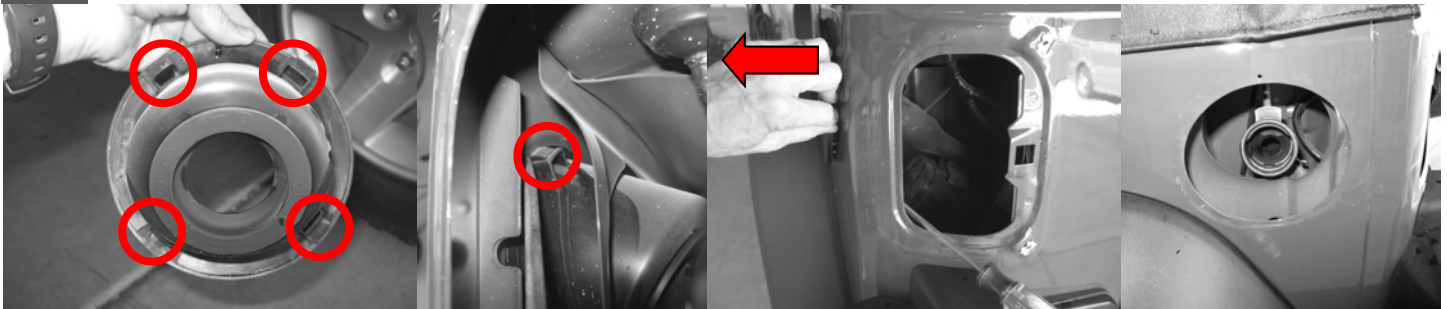
13 Remove Tail Light by removing only the two innermost screws and unplug.

TIP You may have difficulty re-installing the Tail Lights after installation of Skins, we suggest trimming away the two tabs as indicated below. Check during test fit up once skin is bolted up to see if you can insert them before cutting.

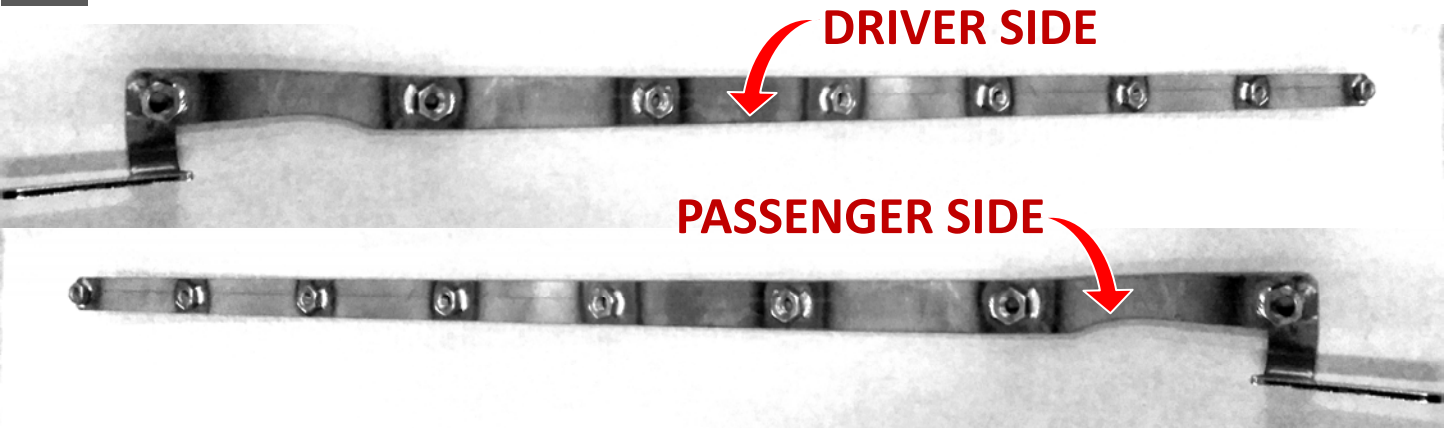


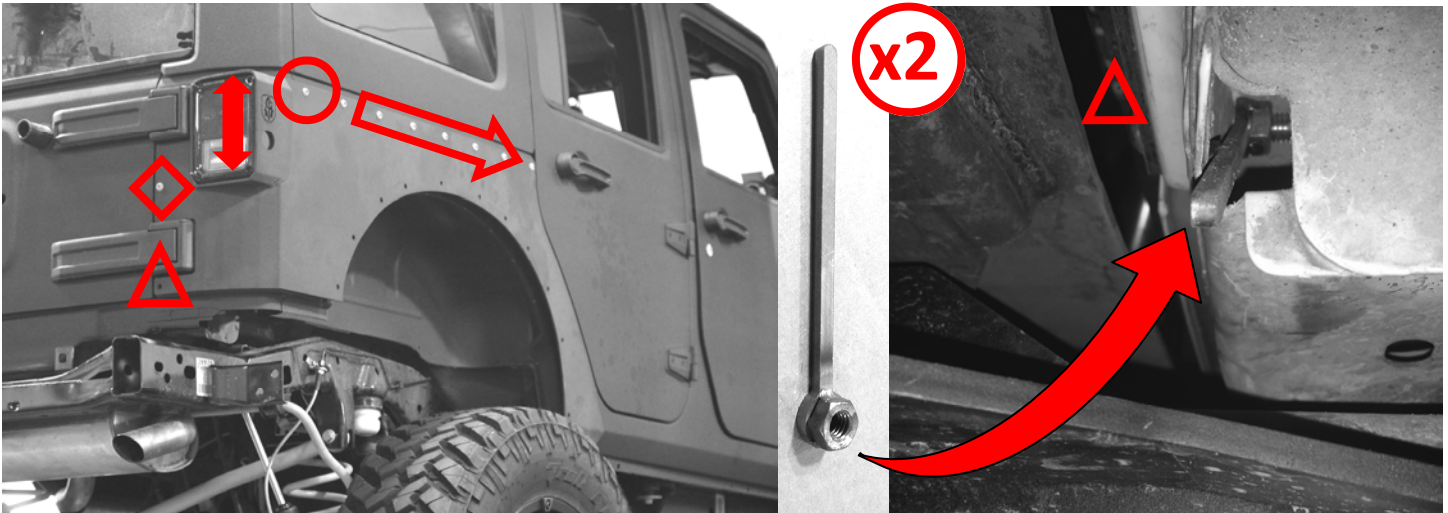
14 Now remove the Gas Filler Neck by first taking off the gas cap. There are four (4) tabs holding it in place. Gently push the tabs nearest the Tail Light opening inward with a long flat head screw driver.

After those two are freed, pull outward gently while you release the back two tabs.



15 Below is the driver side top nut flange. Insert this piece through the tail light opening. Nuts will be toward the inside of the vehicle and tab down. This step requires some forceful stabbing and sawing to get past the sprayed in foam insulation.





16 Loosely fit up the skin and begin threading one of the 3/8x1-in Button Head Bolts and Washers through the hole nearest the tail light on top where the red circle is.

○ Now you can use that as a leverage point to tilt up the flange to align the second hole and so on down the line. **Do not tighten down fully yet and don't forget the washers.**

17 The hole as indicated above by a red diamond goes through into the tail light opening.

◇ Put one 3/8x1.75-in Button Head Bolt and Washer through skin followed by a Washer and Nut on the inside. **It is best to hold the Button Head still and tighten the Nut down.**

18 From the underside of the vehicle above the frame there is a drain hole where as shown you can insert the small nut plate for the corresponding hole on the skin as indicated with a triangle above.

△ This hole uses the 3/8x1.75-in Bolt and Washer. **Put a washer between the Button Head and the Skin to protect finish.**

19 Reinstall the Gas Filler and Tail Light now to ensure proper fitment and then once all bolts are started begin tightening the bolts fully.

20 If you ordered the Flared version fit those up now. And bolt them on. You will first need to remove the two top center bolts in the wheel well opening as they must go through the flare as well.

21 Test fit is completed. Now remove the skins and have them painted or coated to your liking.

FINISHED!

