

# ROAD



# ARMOR

## 2005 - 2011 TOYOTA TACOMA REAR BUMPER INSTALL INSTRUCTIONS



### Warning!

Read the instructions completely before beginning the installation. Before tightening bolts, drilling or cutting where required, check to make sure that there are no obstructions such as brake, fuel or electrical lines that may be damaged. Also keep in mind this is an aftermarket product and MAY require some minor shimming and or trimming, reaming etc. to fit properly.

### IMPORTANT NOTICE

IF YOU ARE RECEIVING THIS ROAD ARMOR PRODUCT RAW/UNCOATED.

BE SURE TO INSPECT AND OR TEST FIT YOUR PRODUCT TO ENSURE PROPER FITMENT AND ADEQUATE SURFACE PREPERATION BEFORE HAVING YOUR PRODUCT COATED, PAINTED, BED LINED, ETC.

ROAD ARMOR WILL NOT BE RESPONSIBLE FOR THE COST OF COATING YOUR UNIT IF ANY PROBLEMS WITH FIT OR FINISH ARE NOT NOTED AND ADDRESSED PRIOR TO HAVING YOUR PRODUCT COATED.

THANK YOU



### SUGGESTED LIGHTS THAT FIT THIS UNIT:

PIAA 2000 Part Numbers (2091, 2090).

Hella 1400 Optilux

License plate lights. You can get them at...



### TOOLS NEEDED

- Yourself and a strong friend / bumper jack.  
( Don't worry, we're not calling you or your friend a "tool" )
- Socket set, Ratchet & Wrenches (metric & standard)  
( ... more than likely metric for your rig, cause everything's imported these days, and standard for your new bad ass Made in USA bumper.  
Road Armor thanks you for supporting the American Economy! )
- Common Sense, Tape Measure, and a bit of Patience  
( And also a cold drink to celebrate afterwards )



**STEP 1:** Make sure you have all necessary tools and hardware.

Hardware Kit Includes : ( all Grade 8 )

(8) 1/2" x 1.5" Tabbed bolts coarse thread Grade 8

Bolts (Manufactured Part)

(2) 1/2" x 1.5" coarse thread Grade 8 Bolts

(12) 1/2" Washers

(10) 1/2" Lock Washers

(10) 1/2" Coarse Thread Nuts

(4) 1.25" 3/8 SOCKET CAP WINCH BOLTS (Stainless)

(4) 1.25" 7/16 ALLEN HEAD WINCH BOLTS (Stainless)

(4) ALLEN HEAD BOLT & NUT (for logo)

(1) Small Road Armor Logo

**STEP 2:**

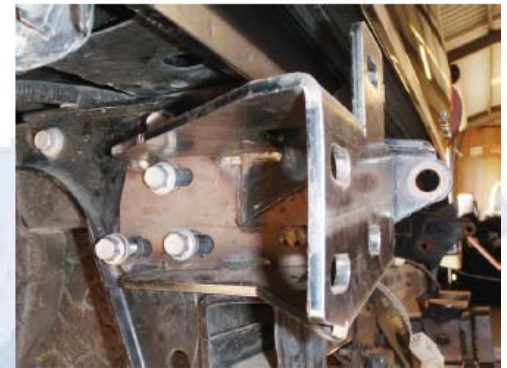
- Park on level surface and Disconnect Positive Battery Terminal.
- Disconnect Reverse Lights and License Plate Lights.

**STEP 3:**

- Loosely Install brackets to frame using existing bolts.
- Optionally... You can cut off the excess frame extending beyond the bracket. This isn't necessary but will make life easier for you when the time comes to bolt everything in.

**STEP 4:**

- Install one bolt in Road Armor bumper per side using retainer clips as pictured below.
- Use a small socket to help push the retainer clips all the way onto the bolt.



**STEP 5:**

- Carefully put bumper on and thread nut onto top bolts.
- Use your best judgement to align and center bumper.
- When you're happy with the way it looks... and we know you'll be happy... tighten that baby down and enjoy the view.
- And don't forget to celebrate with a cold one.

