



# **INSTALL INSTRUCTIONS**

## **TOYOTA TACOMA REAR BUMPER**

**Product : 9161R0B**

**Application : 2016-2019 TACOMA**

## I WARNING

Read the instructions completely before beginning installation. Before tightening bolts, drilling or cutting where required, check to make sure there are no obstructions such as brake, fuel or electrical lines which may be damaged. Also keep in mind this is an after-market product and MAY require minor shimming and/or trimming, reaming, etc. for proper fit. Road Armor is not responsible for any damages to vehicle.

## ⓘ IMPORTANT NOTICE

- Be sure to inspect and test fit your product to ensure proper fitment before having it coated, painted, bed lined, etc.
- Road Armor will not be responsible for the cost of coating your unit if any problems with fit or finish are not noted and addressed beforehand.

## SAFETY FIRST!

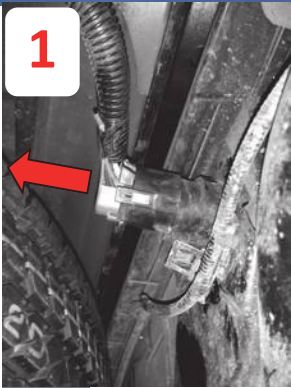
- FOLLOW ALL INSTRUCTIONS, YOUR SAFETY AND THE SAFETY OF OTHERS IS MOST IMPORTANT.
- WEAR APPROPRIATE EYE PROTECTION AND EXERCISE CAUTION WHEN DRILLING / CUTTING

## REQUIRED TOOLS

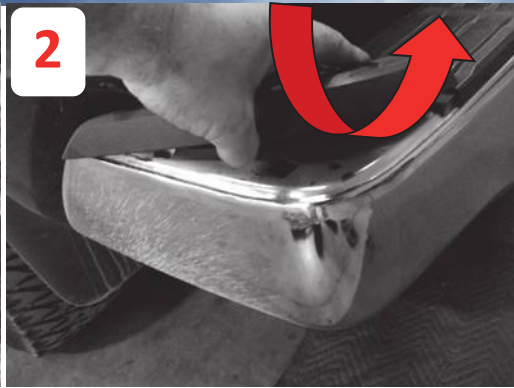
Metric and SAE Socket Sets and Wrenches

## INCLUDED HARDWARE

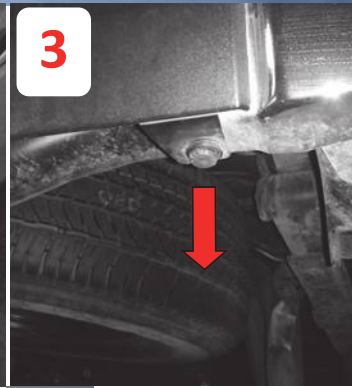
- (6) 1/2" Bolt Tabs
- (6) 1/2" Washers, Lock Washers, Hex Nuts
- (6) Retainer Washers
- (10) 1/4" Bolt Tabs
- (20) 1/4" Washers
- (10) 1/4" Nuts
- (18) #10-24 Button-Head Bolts
- (18) #10-24 Kept-nut
- (1) Receiver Plug Plate
- (1) Stainless Steel Road Armor Logo



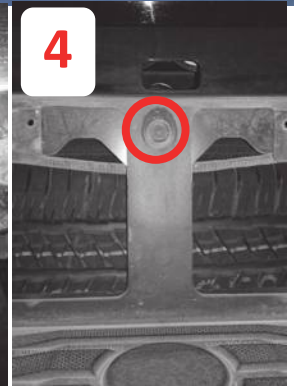
1



2



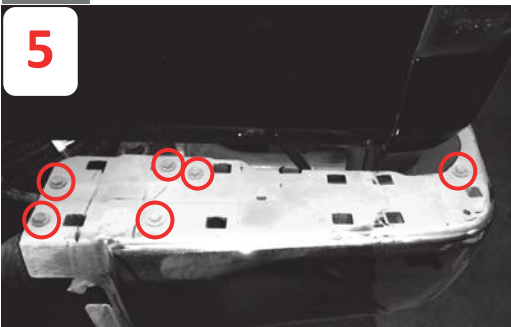
3



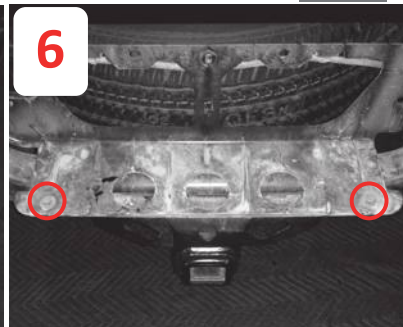
4

- 1 Disconnect the trailer plug and license plate lights
- 2 Pry off top plastic piece from bumper
- 3 Remove plastic inserts on bottom of bumper
- 4 Remove center plastic insert

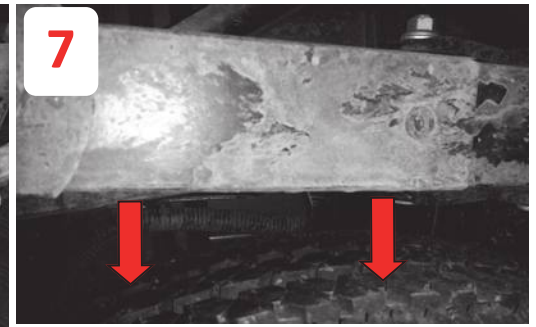
- 5 Unbolt bumper corners from receiver hitch
- 6 Remove wiring and unbolt center section from hitch
- 7 Unpin wiring from frame



5



6



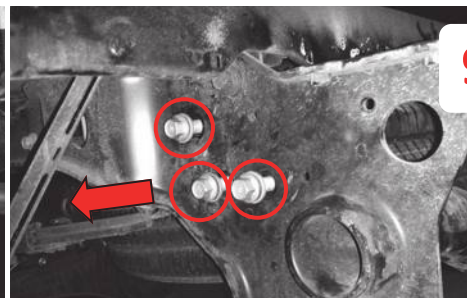
7

8 **\*\*Note the dashed line and trim part off hitch and paint. (WINCH Install Only)**

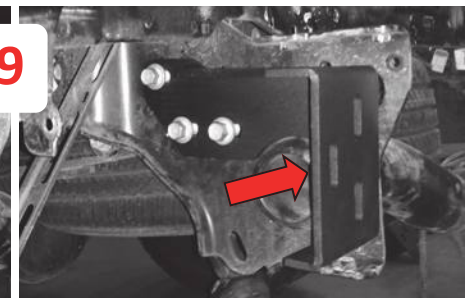
9 Remove 3 bolts and install the included frame brackets onto the frame as shown.



8



9



10

10 Insert (3) retainer washer per side over a bolt tab inserted through the bumpers slotted holes. You can use a socket to assist in affixing the retainer washers. Measure side to side from the corresponding slots on the frame bracket and position the now "retained" bolt tabs at that same width. This makes it easier to fit up the bumper initially. Once on, align the bumper side to side and tighten bolts.

**Note**

Disable blind spot monitor, by pressing up/down until settings is displayed on instrument panel, then press ok, press up down until driver assist is displayed, then press ok, press up and down until Blind spot is displayed, then press ok and select on or off

- 11 Install stainless RA Logos, receiver plug plate and logo backing plate with provided #10 hardware.
- 12 Install all rear sensors if equipped.
- 13 Install rear Blind-Spot sensors onto provided bracket and install each bracket onto bumper with 1/4" hardware as shown below. (\*Do not install logo backing plate with sensors\*)

