



# **INSTALL INSTRUCTIONS**

## **Stealth Front Bumper**

**Product : 9161FXX**

**Application : 2016-2019 Toyota Tacoma**

## I WARNING

Read the instructions completely before beginning installation. Before tightening bolts, drilling or cutting where required, check to make sure there are no obstructions such as brake, fuel or electrical lines which may be damaged. Also keep in mind this is an after-market product and MAY require minor shimming and/or trimming, reaming, etc. for proper fit. Road Armor is not responsible for any damages to vehicle.

## ⓘ IMPORTANT NOTICE

- Be sure to inspect and test fit your product to ensure proper fitment before having it coated, painted, bed lined, etc.
- Road Armor will not be responsible for the cost of coating your unit if any problems with fit or finish are not

## SAFETY FIRST!

- FOLLOW ALL INSTRUCTIONS, YOUR SAFETY AND THE SAFETY OF OTHERS IS MOST IMPORTANT.
- WEAR APPROPRIATE EYE PROTECTION AND EXERCISE CAUTION WHEN DRILLING / CUTTING

## REQUIRED TOOLS

SAE & METRIC Socket set and wrenches  
Screw drivers, pry tool, pick tool, pliers  
Body Trim Tool (Cut Fascia)

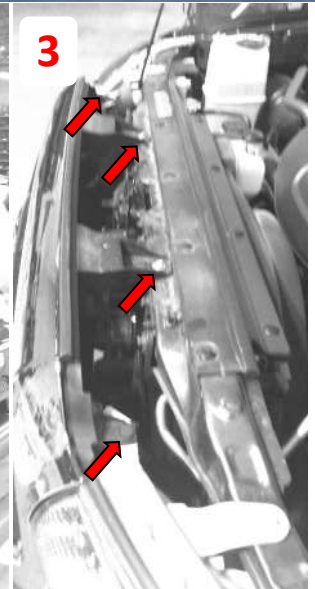
## RECOMMENDED TOOLS

Adjustable Table Cart / Table/Pallet Lift or Hoist  
Impact driver

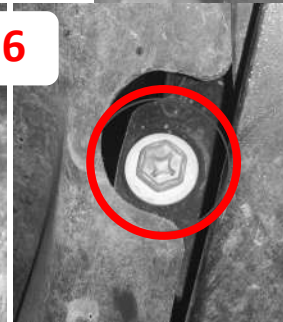
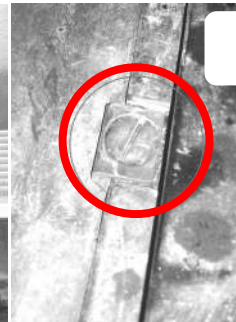
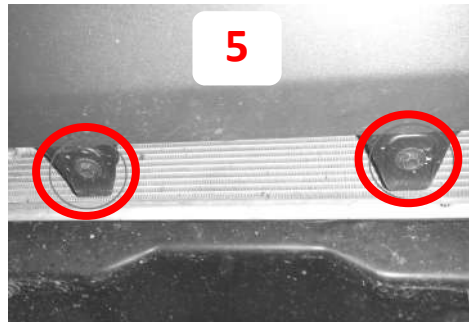
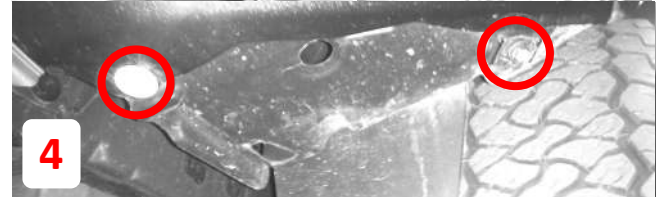
## INCLUDED HARDWARE

- 4 7/16"-14 x 1-1/4" ASTM A574 Hex Drive Zinc Finish Alloy Steel Socket Cap Screw
- 4 3/8"-16 x 1-1/4" ASTM A574 Hex Drive Zinc Finish Alloy Steel Socket Cap Screw
- 12 #10-24 x 3/4" ASTM F879 Hex Drive Grade 18-8 Stainless Steel Button Socket Cap Screw
- 12 #10-24 Grade 18-8 Stainless Steel with External Tooth Lock washer K-Lock Nut
- 6 1/2"-13 Yellow Zinc Finish Grade 8 Finished Hex Nut
- 10 1/2" Yellow Zinc Finish High Alloy Medium Split Lock Washer
- 4 7/16" Yellow Zinc Finish High Alloy Medium Split Lock Washer
- 12 1/2" x 1.375" OD Thru-Hardened Yellow Zinc Finish Steel USS General Purpose Flat Washer
- 8 7/16" x 0.922" OD Thru-Hardened Yellow Zinc Finish Steel SAE General Purpose Flat Washer
- 2 1/2"-13 x 4-1/2" Grade 8 Yellow Zinc Finish Hex Cap Screw
- 8 1/2"-13 x 1-1/2" Grade 8 Yellow Zinc Finish Hex Cap Screw
- 4 DOUBLE BOLT PLATE (1/2")

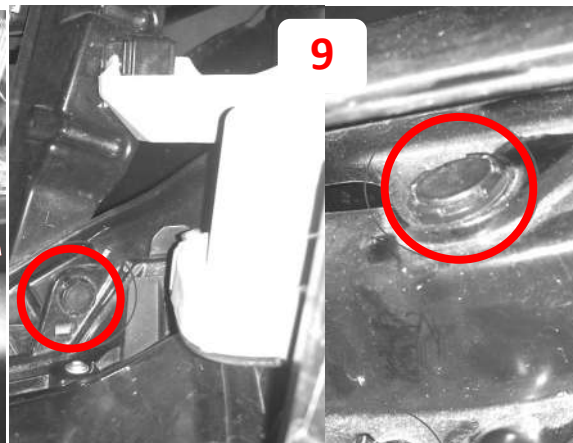
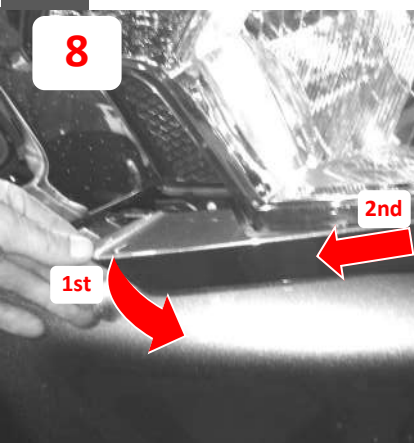




- 1 Park the vehicle on a flat, level surface if possible.
- 2 Open the hood
- 3 Remove plastic rivets along top side of grill



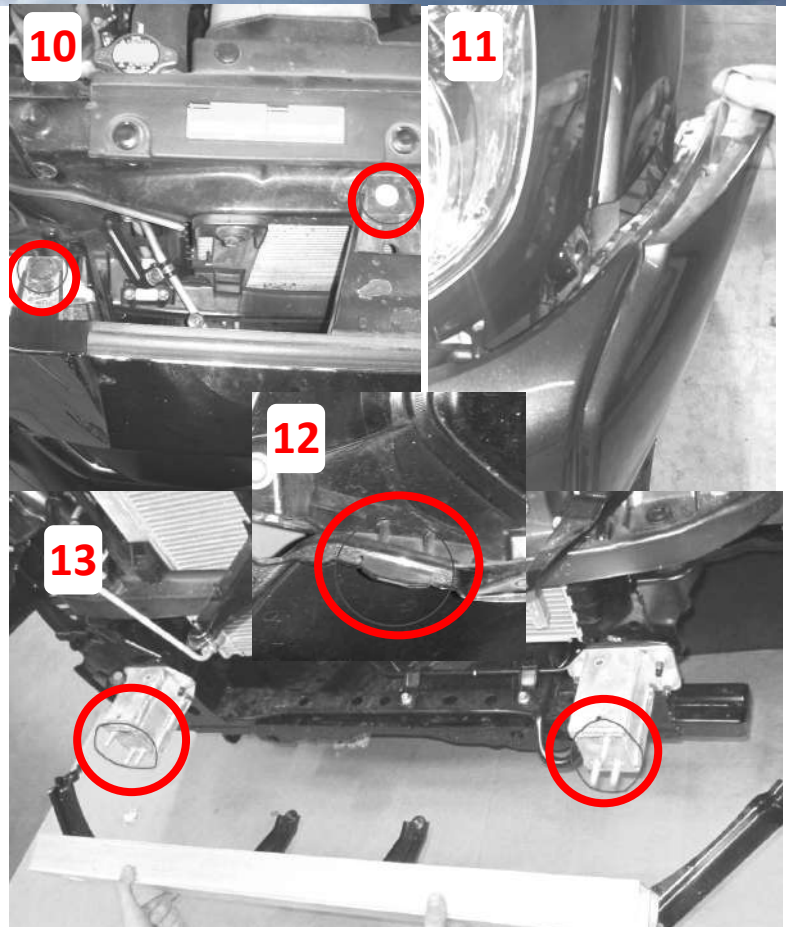
- 4 Remove the 10mm screws on the bottom side of the bumper under the fog lights (Both sides)
- 5 Remove the two bolts from under side of the factory bumper
- 6 Remove the two screws from the fender well liners on both sides of the vehicle
- 7 Disconnect the factory fog lights from the stock bumper



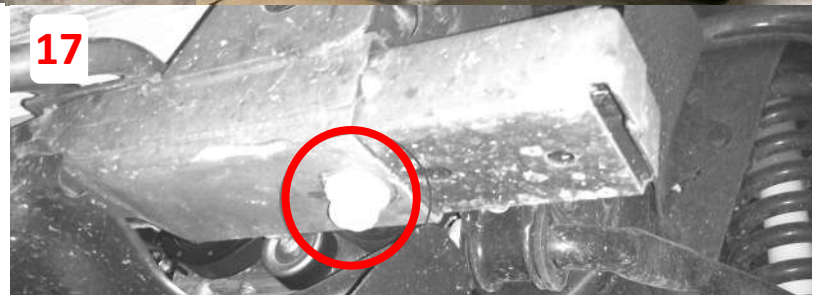
- 8 Carefully pry loose. This piece just snaps in place and will be attached to the new bracket provided.
- 9 Remove three plastic clips from bottom inside of grill. (One on each side and one in the middle).



- 10** Remove the plastic clips and screw to free the grill.
- 11** Remove the factory bumper and grill and set aside for reinstallation.
- 12** Remove tabs on bottom inside of grill to separate the OEM bumper cover from the grill.
- 13** Remove the six 14mm nuts on the stock bumper with a socket.
- 14** Using masking tape to mark even cut line from top edge of fog lamps to bottom edge of fascia seam. Cut and remove bottom section of fascia.
- 15** Reinstall fascia and grille using OEM hardware as shown below.



- 16** Remove four 17mm bolts from bottom of frame rail with socket. (Two are on the factory tow hook on passenger side of truck)



- 18 Install bracket to frame using OEM hardware (RED Arrows) and 1/2" hardware (BLUE Arrows) provide as shown below. (1/2" x 4 1/2" Bolts mounted on bottom of bracket.)
- 19 Install the double bolt plate through inside bumper slot and affix using supplied #10-24 hardware.



- 20 Peel off protective layer from brushed stainless logo letters then proudly install using supplied #10 stainless hardware.
- 21 Install lighting and/or Winch at this time.
- 22 Fit up the bumper, carefully aligning retained bolts with corresponding bracket slots using 1/2" bolts. Do not tighten completely to allow for adjustments.
- 23 Once centered and satisfied with fitment tighten everything down.



## FINISHED



Rely only on high-grade off-road bumpers offered on our virtual shelves.