



# **INSTALL INSTRUCTIONS**

**Stealth Front Hidden Winch Bumper**

**30" Single Row Light Port Access**

**Product : 9151FXX**

**Application : 2014-2020 Toyota 4RUNNER**

## I WARNING

Read the instructions completely before beginning installation. Before tightening bolts, drilling or cutting where required, check to make sure there are no obstructions such as brake, fuel or electrical lines which may be damaged. Also keep in mind this is an after-market product and MAY require minor shimming and/or trimming, reaming, etc. for proper fit. Road Armor is not responsible for any damages to vehicle.

## ⓘ IMPORTANT NOTICE

- Be sure to inspect and test fit your product to ensure proper fitment before having it coated, painted, bed lined, etc.
- Road Armor will not be responsible for the cost of coating your unit if any problems with fit or finish are not noted and addressed beforehand.

## SAFETY FIRST!

- FOLLOW ALL INSTRUCTIONS, YOUR SAFETY AND THE SAFETY OF OTHERS IS MOST IMPORTANT.
- WEAR APPROPRIATE EYE PROTECTION AND EXERCISE CAUTION WHEN DRILLING / CUTTING

## REQUIRED TOOLS

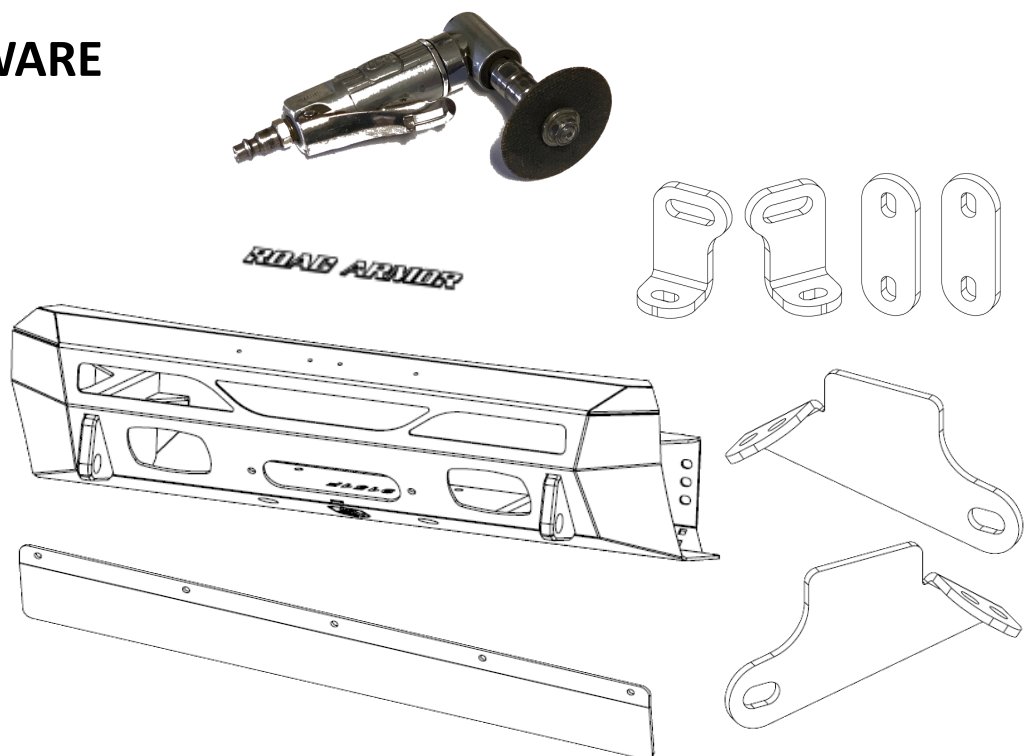
SAE & METRIC Socket set and wrenches  
Screw drivers, pry tool, pick tool, pliers  
Body Trim Tool (Cut Fascia)

## RECOMMENDED TOOLS

Adjustable Table Cart / Table/Pallet Lift or Hoist  
Impact driver

## INCLUDED HARDWARE

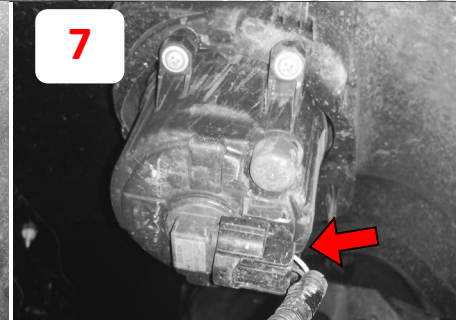
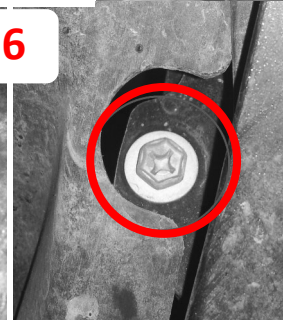
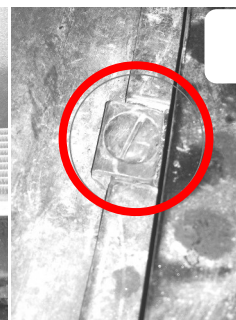
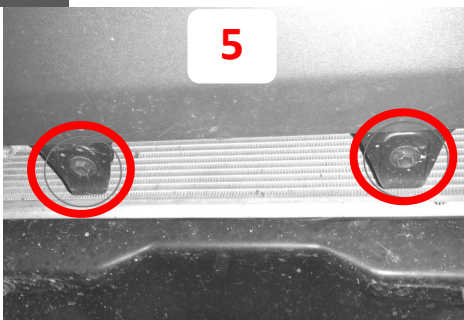
- 4 3/8" x 1" Carriage Bolt
- 4 3/8" Nut
- 4 3/8" Washer
- 5 5/16" x 1" Button Head Bolt
- 2 5/16" Nut
- 7 5/16" Washer
- 3 5/16" Barrel Nut
- 2 1/4" x 1" Hex Bolt
- 6 1/4" x 1" Button Head Bolt
- 6 1/4" Nut
- 7 1/4" Washer
- 4 #10-24 Button Head Bolt
- 4 #10-24 Lock Washer Nut
- 2 M12 x 30mm Hex Bolt
- 2 1/2" Washer
- 1 RA LOGO Set



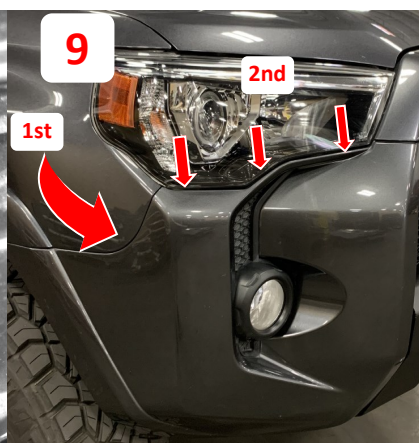
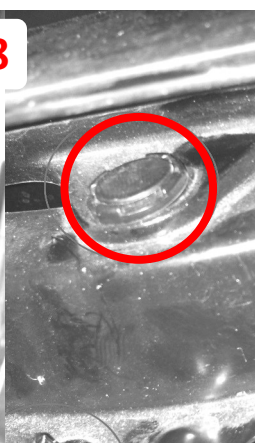
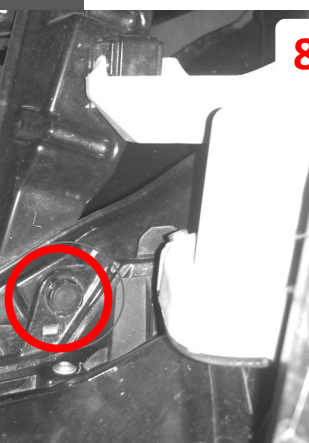




- 1 Park the vehicle on a flat, level surface if possible.
- 2 Open the hood
- 3 Remove all plastic rivets and screws along top side of air shield & grille.



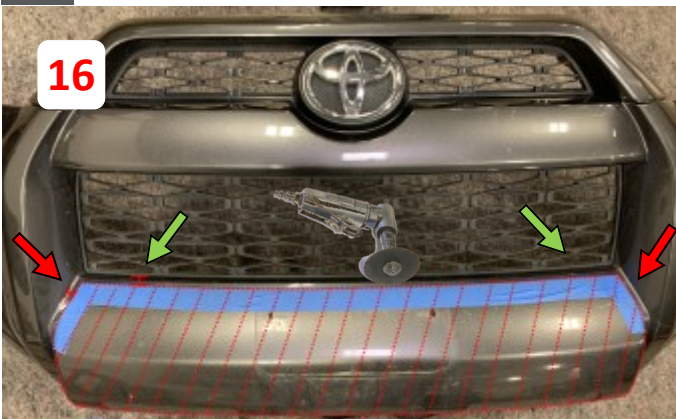
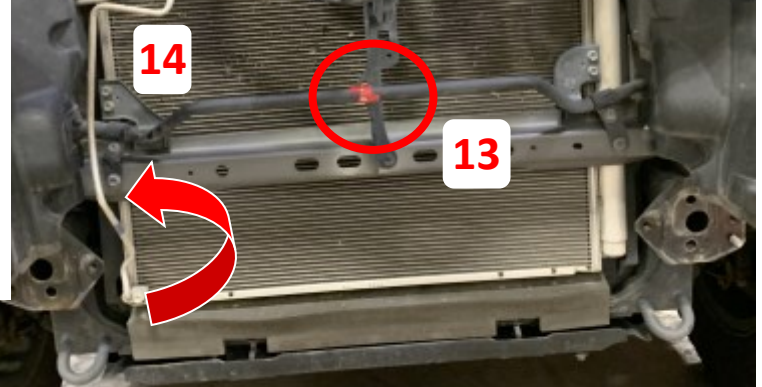
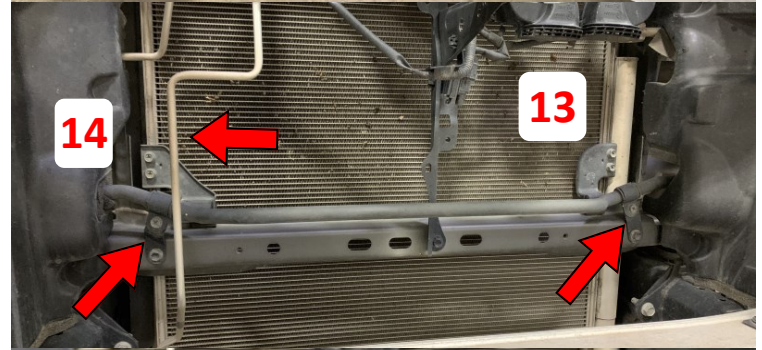
- 4 Remove the 10mm screws on the bottom side of the bumper under the fog lights (Both sides)
- 5 Remove the two bolts from under side of the factory bumper
- 6 Remove the three screws from each fender well liners on both sides of the vehicle
- 7 Disconnect the factory fog lights from the stock bumper



- 8 Remove four plastic clips from bottom inside of grille. (One on each side and one in the middle).
- 9 Carefully remove bumper facias by prying loose corner of facias near fenders first, followed by headlamps. Bumper should free easily.



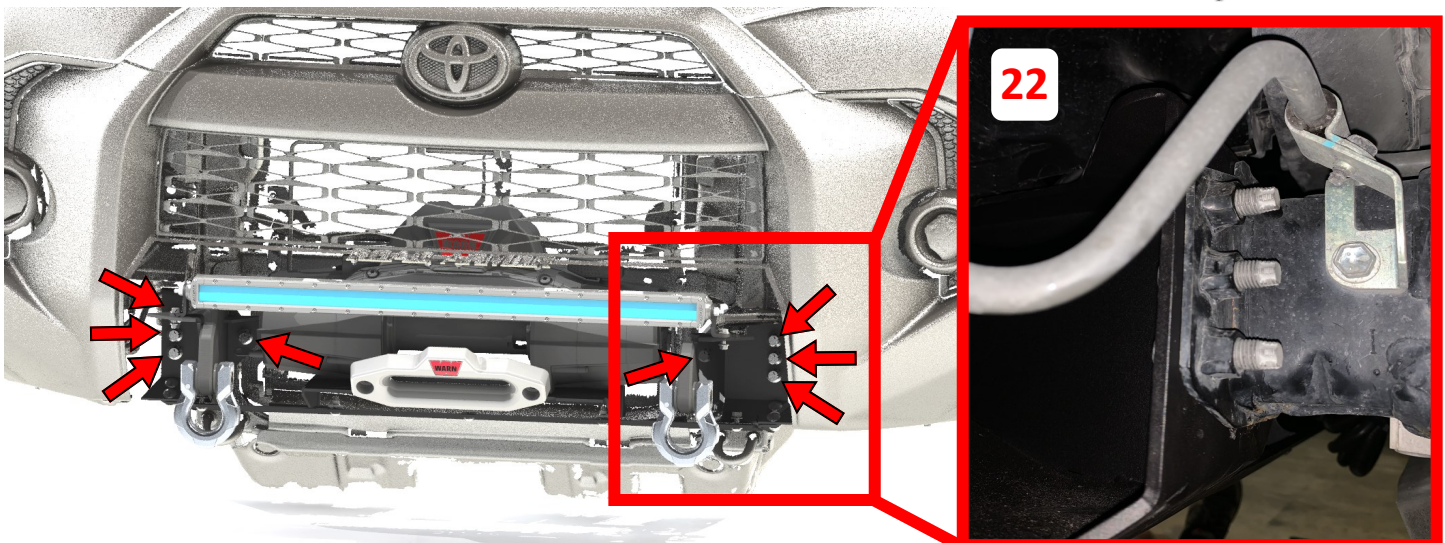
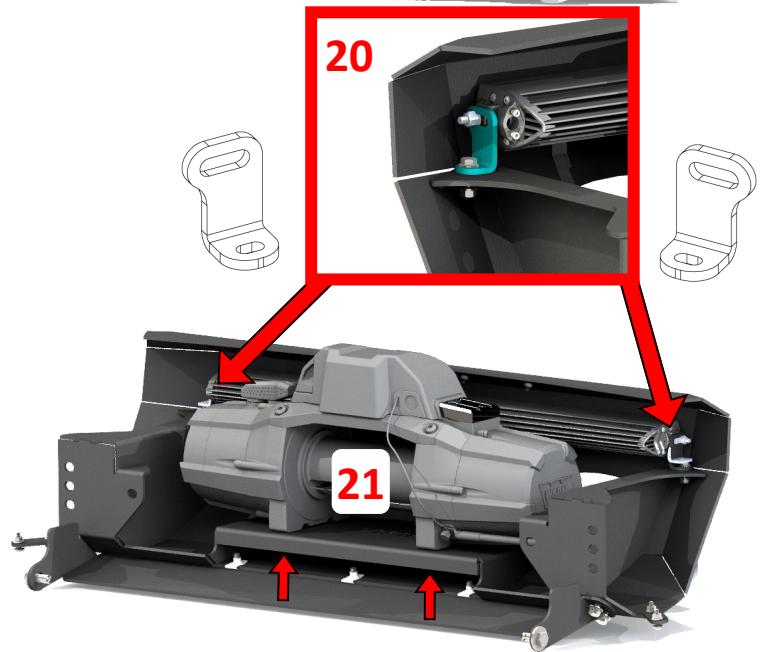
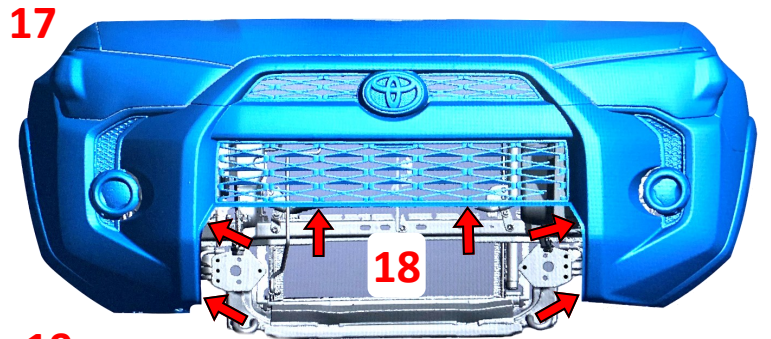
- 10** Remove the plastic clips and screw to free the grille.
- 11** Remove the factory bumper and grille, then set aside for modifications.
- 12** Remove the eight 14mm bolts on the stock reinforcement bumper.
- 13** **\*\*Depending on winch type used for installation, coolant line may need to be secured: Using a pair of pliers, bend coolant line brackets allowing line to be zip tied to back of vertical core support brace.**
- 14** Carefully reposition vertical A/C line next to condenser for additional clearance.
- 15** Using a marker, cut both driver and passenger side air dams level with the tops of the frame mounting bracket.
- 16** Using protective tape, measure, mark & tape cut profile for new bumper. **GREEN** arrow are near mesh should be 1" gap. **RED** arrow near sides of bumper should be 1/2" gap. This cut should be along the edge of the crevasse where the bumper starts protruding back out. Flat surface remaining.





- 17 Reinstall the factory bumper in reverse, as shown in steps 1 thru 9.
- 18 Using protective tape, protect the paint along the edges of the factory fascia. Be sure to layer tape making it easier to remove once bumper is installed.
- 19 Peel off protective layer from brushed stainless logo letters then proudly install using supplied #10 stainless hardware.
- 20 Install 30" single row light using supplied 1/4" hardware and light brackets.
- 21 Install winch fairlead prior to installation of winch. Install winch using winch hardware through access holes at base of bumper profile.
- 22 With assistance from another person or jack, hold bumper up to frame horn ends and secure using factory washer head bolts. Align bumper centered to fascia's profile and tighten bolts.

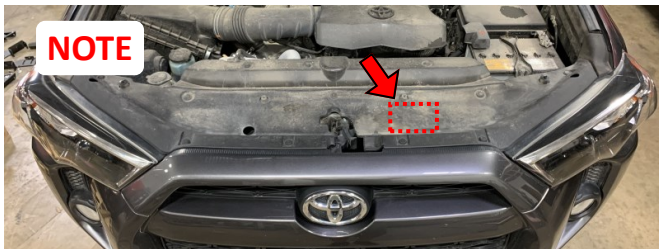
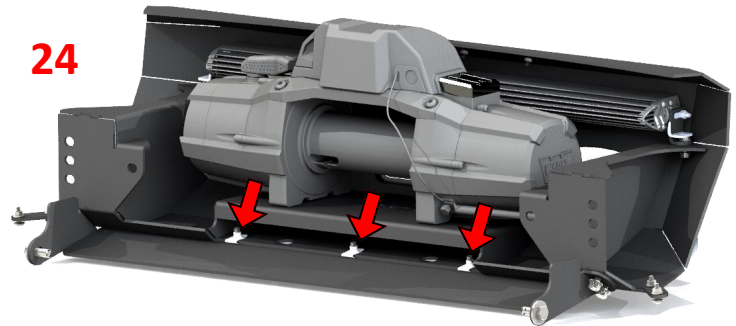
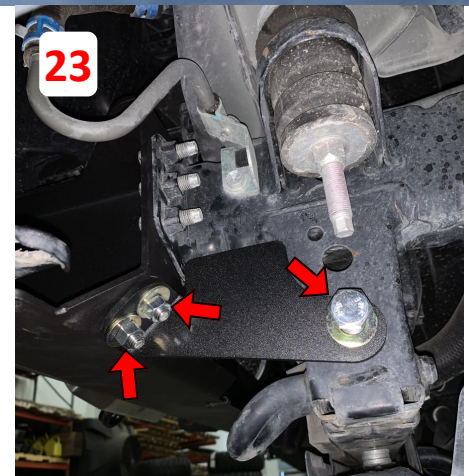
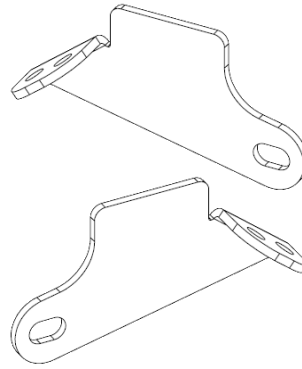
**NOTE:** Install two OEM bolts into each lower frame nuts "backwards" (acting as studs) doing so will allow bumper to hang on studs and easily allow bumper to be mounted while the other 6 bolts are installed securing bumpers.



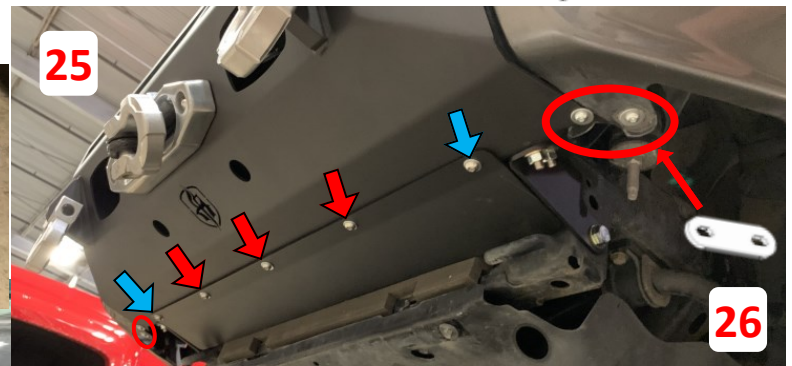


- 23** Install supplied anchor bracket to lower bumper frame brackets using supplied 1/2" carriage bolts, washers & nuts. Secure bracket to side of frame using supplied M14 bolt and washer as shown.
- 24** Install three 5/16" barrel nuts onto center of bumper shell under winch plate.
- 25** Install skid plate using 5 - 5/16" button head bolts, nuts and washers.
- 26** Install both lower fascia supports through lower bumper corners using 1/4" button head bolts, washers and nuts. Adjust fascias as needed and tighten all hardware.

**NOTE:** Winch access hole can be measured, cut and made under hood through top air shield. Confirm winch access prior to cutting any access holes.



**NOTE**



**FINISHED!**