

# ROAD ARMOR

RULE THE ROAD



## INSTALL INSTRUCTIONS

### TOYOTA TUNDRA FRONT BUMPER

Product : 914R0B, 914R4B, 914R5B, AND NON-WINCH

Application : 2014+ Toyota Tundra

( This manual applies to all Stealth Series Front Winch and non-winch Bumpers )

**⚠ WARNING**

Read the instructions completely before beginning installation. Before tightening bolts, drilling or cutting where required, check to make sure there are no obstructions such as brake, fuel or electrical lines which may be damaged. Also keep in mind this is an after-market product and MAY require minor shimming and/or trimming, reaming, etc. for proper fit. Road Armor is not responsible for any damages to vehicle.

**ⓘ IMPORTANT NOTICE**

- Be sure to inspect and test fit your product to ensure proper fitment before having it coated, painted, bed lined, etc.
- Road Armor will not be responsible for the cost of coating your unit if any problems with fit or finish are not noted and addressed beforehand.

**SAFETY FIRST!**

- FOLLOW ALL INSTRUCTIONS, YOUR SAFETY AND THE SAFETY OF OTHERS IS MOST IMPORTANT.
- WEAR APPROPRIATE EYE PROTECTION AND EXERCISE CAUTION WHEN DRILLING / CUTTING

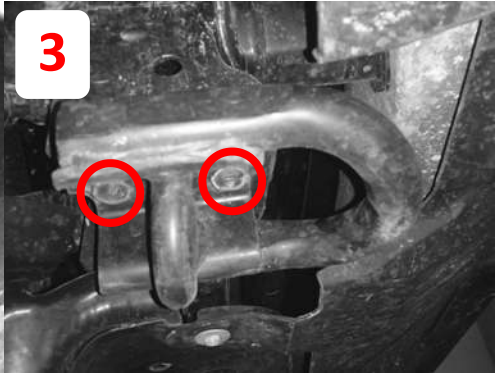
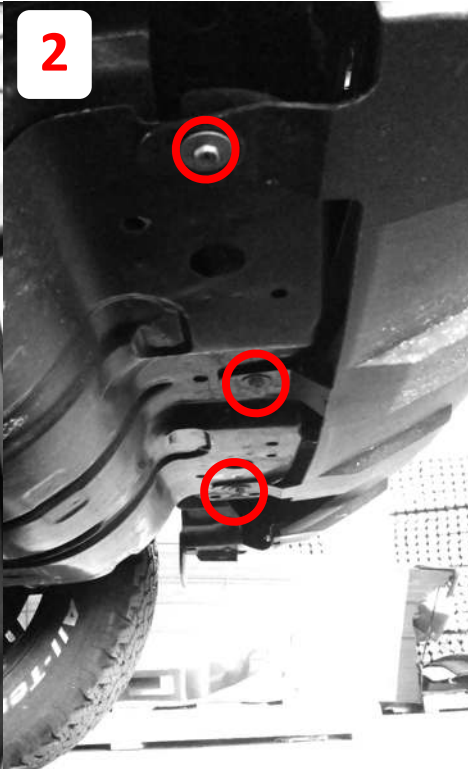
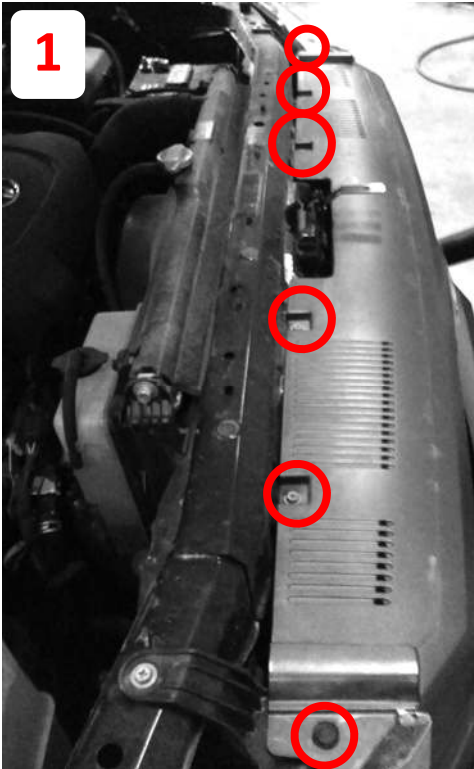
**REQUIRED TOOLS**

Metric and SAE Socket Sets and Wrenches

Screw Driver Phillips and Flat head

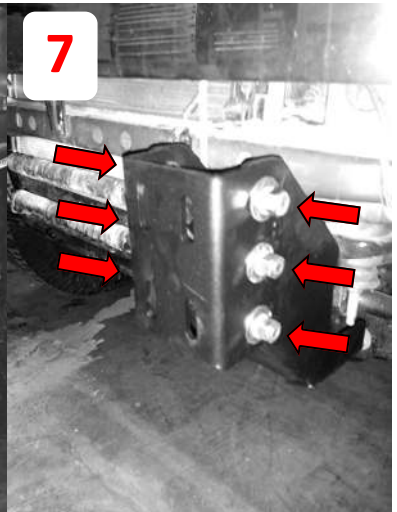
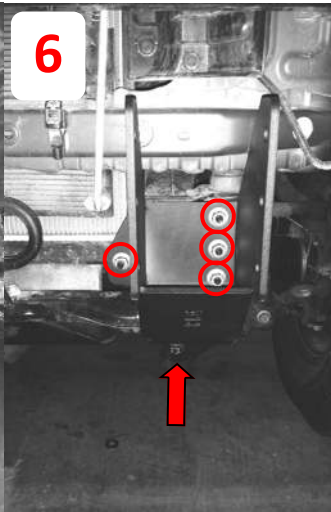
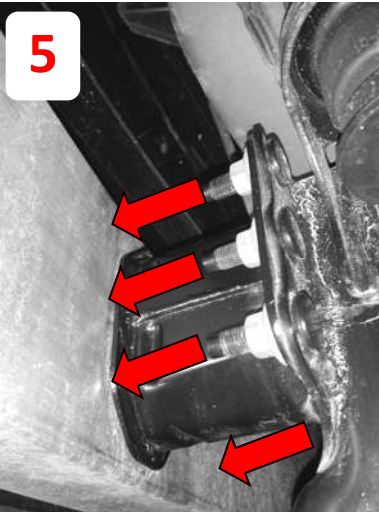
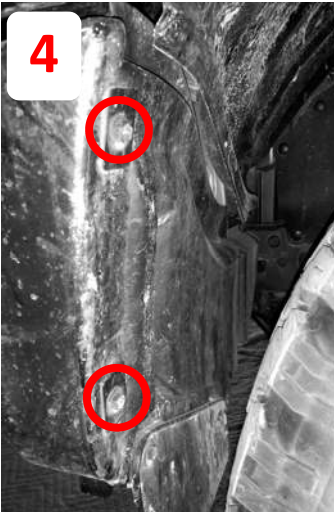
**INCLUDED HARDWARE**

- (1) Winch and logo kit
- (1) Large Road Armor logo
- (2) Retainer washers
- (20) 1.5" bolt tabs
- (20) .5" Washers
- (20) .5" lock washers
- (20) .5" nuts



- 1 Remove grill. (4) bolts and (2) plastic inserts. The bottom is just snapped in.
- 2 Remove bumper bolts to skid plate.
- 3 Remove factory tow hooks.

- 4 Remove lower inner fender well and disconnect fog lights and parking sensors.
- 5 Remove (4) nuts per side and pull off bumper.
- 6 Install frame bracket re-using original bumper and tow hook hardware.
- 7 Install adjustable bracket to the outside using supplied hardware.



- 8 If you have a winch or lights to install, now is the time.
- 9 Install (1) retainer clip per side and fit up bumper.
- 10 Re-install grill in reverse order making sure everything is aligned, install the remaining hardware and tighten.

