



INSTALL INSTRUCTIONS

Stealth Front Bumper

Product : 905XX

Application : 2012 + Toyota Tacoma

I WARNING

Read the instructions completely before beginning installation. Before tightening bolts, drilling or cutting where required, check to make sure there are no obstructions such as brake, fuel or electrical lines which may be damaged. Also keep in mind this is an after-market product and MAY require minor shimming and/or trimming, reaming, etc. for proper fit. Road Armor is not responsible for any damages to vehicle.

ⓘ IMPORTANT NOTICE

- Be sure to inspect and test fit your product to ensure proper fitment before having it coated, painted, bed lined, etc.
- Road Armor will not be responsible for the cost of coating your unit if any problems with fit or finish are not noted and addressed beforehand.

SAFETY FIRST!

- FOLLOW ALL INSTRUCTIONS, YOUR SAFETY AND THE SAFETY OF OTHERS IS MOST IMPORTANT.
- WEAR APPROPRIATE EYE PROTECTION AND EXERCISE CAUTION WHEN DRILLING / CUTTING

REQUIRED TOOLS

SAE & METRIC Socket set and wrenches
Screw drivers, pry tool, pick tool, pliers

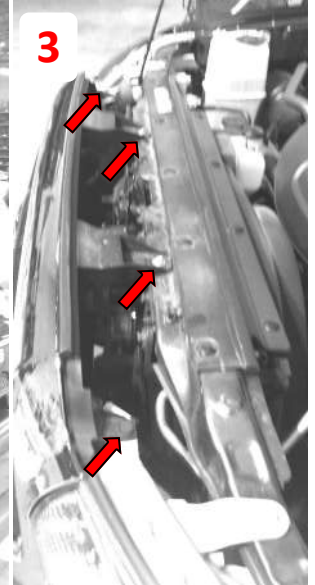
RECOMMENDED TOOLS

Adjustable Table Cart / Table/Pallet Lift or Hoist
Impact driver

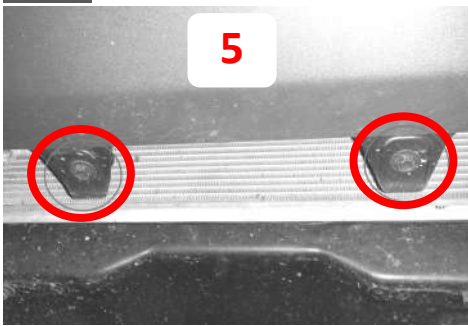
INCLUDED HARDWARE



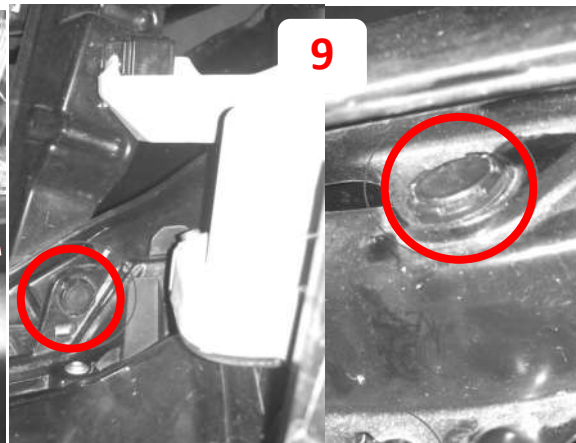
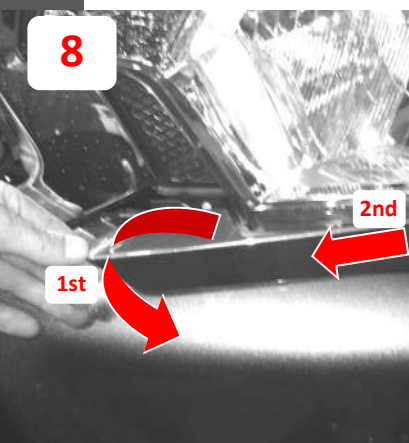
- 4 7/16"-14 x 1-1/4" ASTM A574 Hex Drive Zinc Finish Alloy Steel Socket Cap Screw
- 4 3/8"-16 x 1-1/4" ASTM A574 Hex Drive Zinc Finish Alloy Steel Socket Cap Screw
- 4 #10-24 x 3/4" ASTM F879 Hex Drive Grade 18-8 Stainless Steel Button Socket Cap Screw
- 4 #10-24 Grade 18-8 Stainless Steel with External Tooth Lock washer K-Lock Nut
- 18 1/2"-13 Yellow Zinc Finish Grade 8 Finished Hex Nut
- 4 7/16"-14 Yellow Zinc Finish Grade 8 Finished Hex Nut
- 20 1/2" Yellow Zinc Finish High Alloy Medium Split Lock Washer
- 4 7/16" Yellow Zinc Finish High Alloy Medium Split Lock Washer
- 34 1/2" x 1.375" OD Thru-Hardened Yellow Zinc Finish Steel USS General Purpose Flat
- 8 7/16" x 0.922" OD Thru-Hardened Yellow Zinc Finish Steel SAE General Purpose Flat
- 2 1/2"-13 x 4-1/2" Grade 8 Yellow Zinc Finish Hex Cap Screw
- 12 1/2"-13 x 1-1/2" Grade 8 Yellow Zinc Finish Hex Cap Screw
- 2 7/16"-14 x 1-3/4" Grade 8 Yellow Zinc Finish Hex Cap Screw
- 2 7/16"-14 x 1-1/2" Grade 8 Yellow Zinc Finish Hex Cap Screw
- 8 1.5" SINGLE BOLT TAB (ZINC)
- 2 1/2" Bolt 15/16" O.D. Zinc Pushnut Bolt Retainer



- 1 Park the vehicle on a flat, level surface if possible.
- 2 Open the hood
- 3 Remove plastic rivets along top side of grill

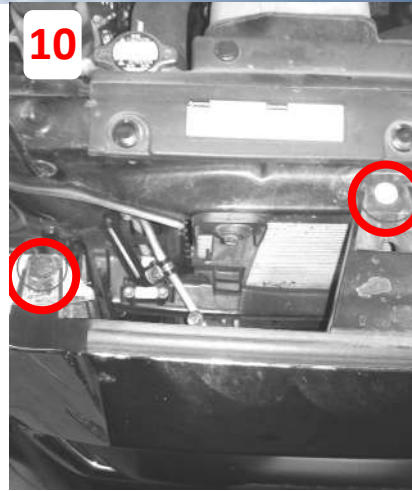


- 4 Remove the 10mm screws on the bottom side of the bumper under the fog lights (Both sides)
- 5 Remove the two bolts from under side of the factory bumper
- 6 Remove the two screws from the fender well liners on both sides of the vehicle
- 7 Disconnect the factory fog lights from the stock bumper



- 8 Carefully pry loose. This piece just snaps in place and will be attached to the new bracket provided.
- 9 Remove three plastic clips from bottom inside of grill. (One on each side and one in the middle).

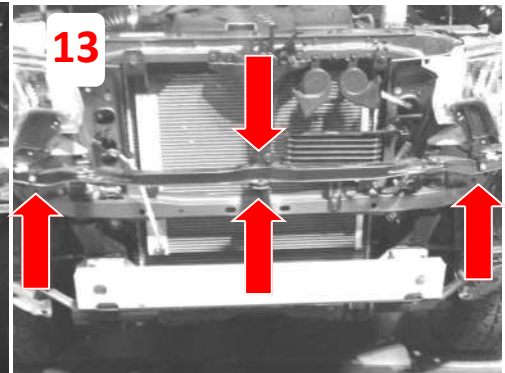
10 Remove the plastic clips and screw to free the grill.



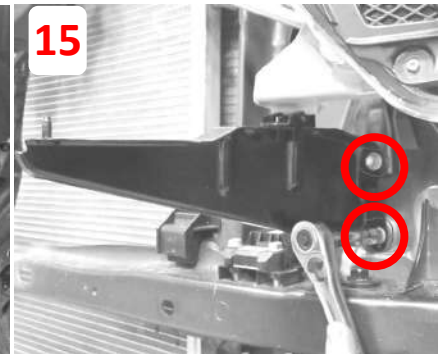
11 Remove the factory bumper and grill and set aside for reinstallation.



12 Remove tabs on bottom inside of grill to separate the OEM bumper cover from the grill.



13 Remove four 10 mm nuts from center factory bumper cover support structure and set aside.



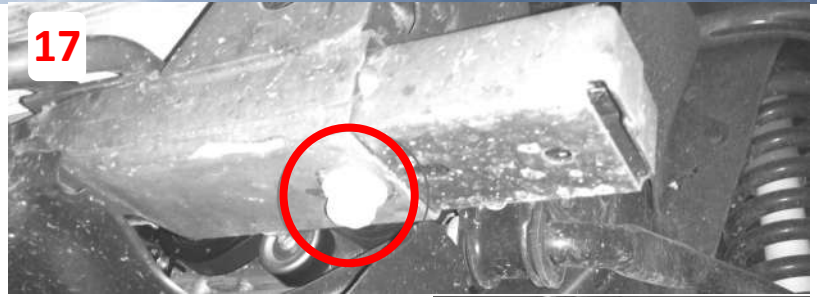
14 Remove two 10mm nuts from side of factory bumper cover support structure, and one bolt from center of plastic bracket. (Both sides). Remove plastic bracket by gently pulling away from truck. (Both sides).

15 Remove two 10mm bolts on stock bumper cover support bracket with socket. Gently slide bracket toward the center of the truck to remove. (Both sides).



16 Remove the six 14mm nuts on the stock bumper with a socket.

17 Remove four 17mm bolts from bottom of frame rail with socket. (Two are on the factory tow hook on passenger side of truck)

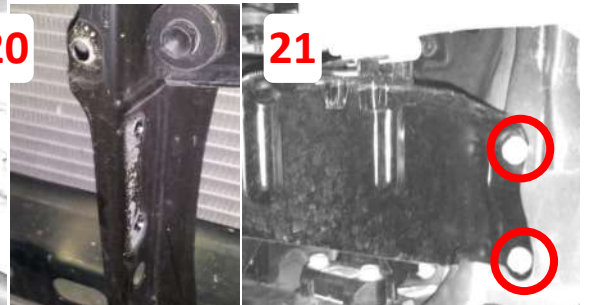
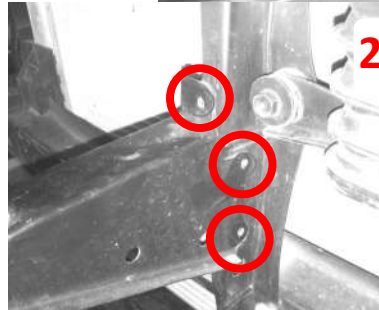
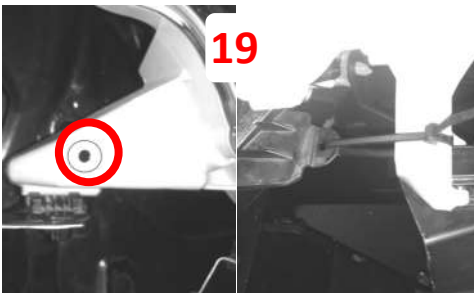


18 Drill .25in hole in outer grill tab as shown



19 Drill 1/4" hole so you can zip tie the light to the light mounting bracket as shown. (Will complete after step 23)

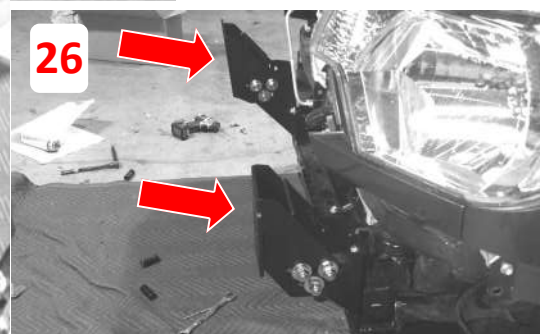
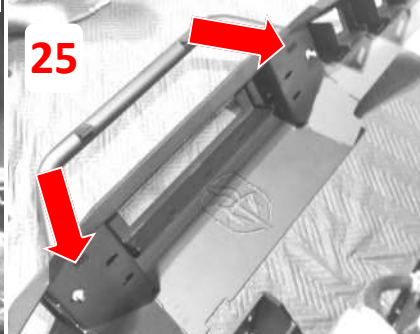
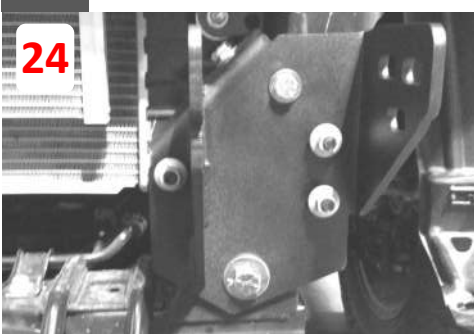
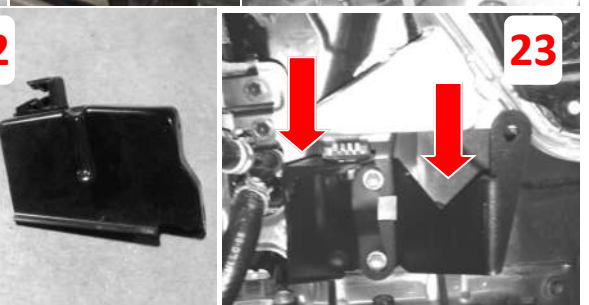
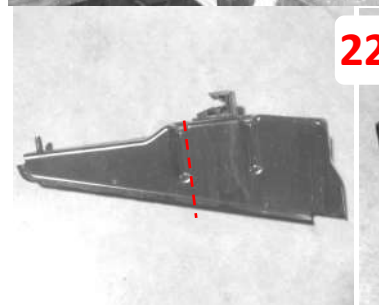
20 Drill out spot welds and remove and discard this piece



21 Remove the light mount bracket and set aside

22 Cut the light mount bracket along dotted line as shown

23 Install the light mount brackets



24 Install bracket to frame using included hardware

25 Install the single bolt tabs through outside bumper slot and affix using supplied retainer clips. These are installed by pushing on with a deep socket while holding the back.

26 Install the final two brackets



27 Fit up the bumper, carefully aligning retained bolts with corresponding bracket slots. Do not tighten completely to allow for adjustments.

28 Peel off protective layer from brushed stainless logo letters then proudly install using supplied #10 stainless hardware.



29 Once centered and satisfied with fitment tighten everything down.

FINISHED

