



INSTALL INSTRUCTIONS

Brush Guard

Product : 617BRSH-W

Application : 2017+ Ford Super Duty

I WARNING

Read the instructions completely before beginning installation. Before tightening bolts, drilling or cutting where required, check to make sure there are no obstructions such as brake, fuel or electrical lines which may be damaged. Also keep in mind this is an after-market product and MAY require minor shimming and/or trimming, reaming, etc. for proper fit. Road Armor is not responsible for any damages to vehicle.

ⓘ IMPORTANT NOTICE

- Be sure to inspect and test fit your product to ensure proper fitment before having it coated, painted, bed lined, etc.
- Road Armor will not be responsible for the cost of coating your unit if any problems with fit or finish are not noted and addressed beforehand.

SAFETY FIRST!

- FOLLOW ALL INSTRUCTIONS, YOUR SAFETY AND THE SAFETY OF OTHERS IS MOST IMPORTANT.
- WEAR APPROPRIATE EYE PROTECTION AND EXERCISE CAUTION WHEN DRILLING / CUTTING

REQUIRED TOOLS

SAE & METRIC Socket set and wrenches

Screw drivers, pry tool, pick tool, pliers

RECOMMENDED TOOLS

Adjustable Table Cart / Table/Pallet Lift or Hoist

Impact driver

INCLUDED HARDWARE

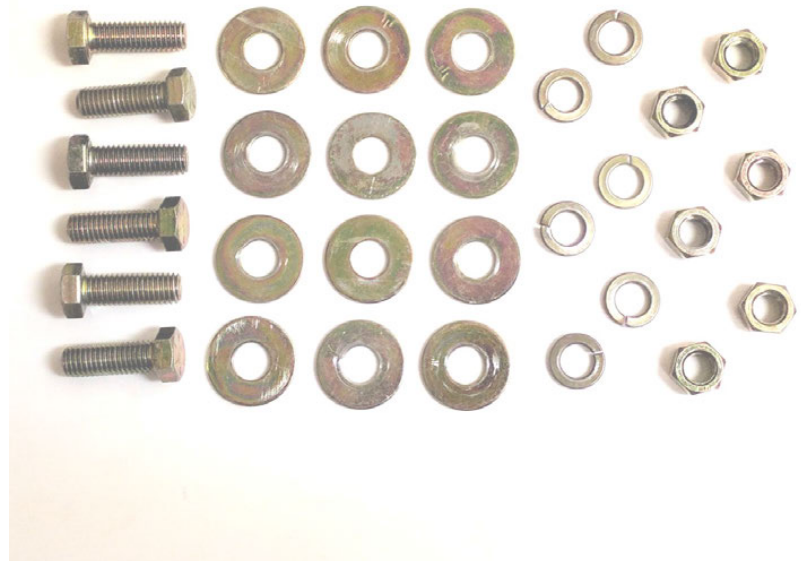
6 1/2" Grade8 Bolts

12 1/2" Flat Washer

6 1/2" Split Lock Washer

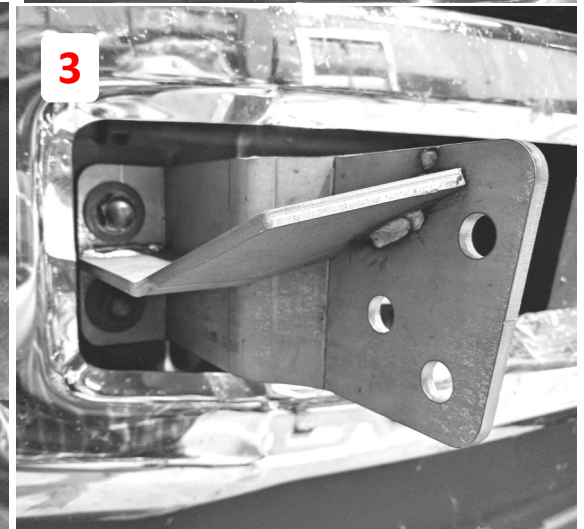
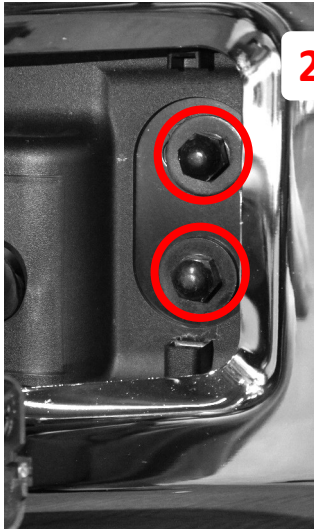
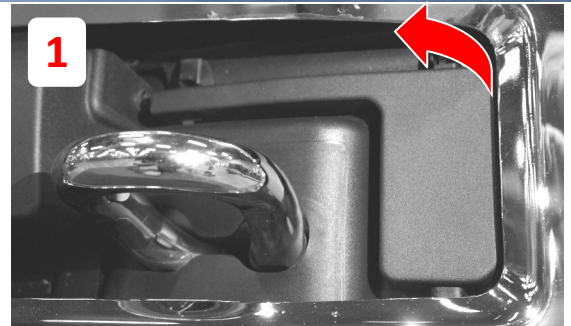
6 1/2"-13 Grade 8 Hex Nut

2 Brackets



1 Remove plastic trim around tow hooks to reveal bolts on both Driver and Passenger sides.

2 Remove the 2 outer bolts per tow hook



Factory Hardware

3 Fit up mounting bracket over the 2 slots where the bolts were removed as shown. (Both Sides) Reinstall the factory hardware to mount the bracket to the truck.



4 Fit up brush guard to brackets and affix using included hardware. Do not tighten fully to allow for adjustments.



5 Check the clearance and once the brush guard is in desired location



Finished

